

Supplementary Information

Coenzyme A binding sites induce proximal acylation across protein families

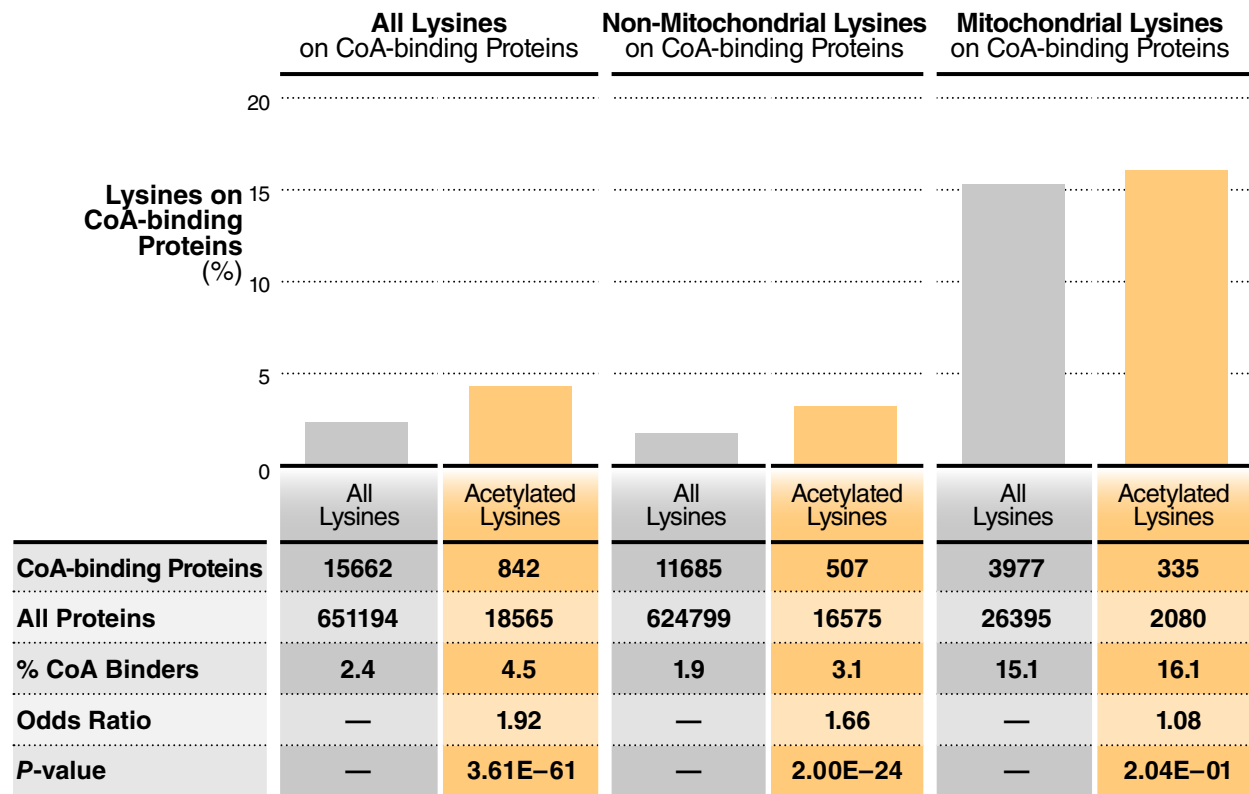
Chris Carrico^{1#}, Andrew Cruz^{1#}, Marius Walter^{1,2}, Jesse Meyer¹, Cameron Wehrfritz¹, Samah Shah¹, Lei Wei¹, Birgit Schilling¹, Eric Verdin^{1*}

This supplementary information file includes:

- Supplementary Figure 1
- Legend of Supplementary Table 1
- Raw western blot images for figures 5B and 5C

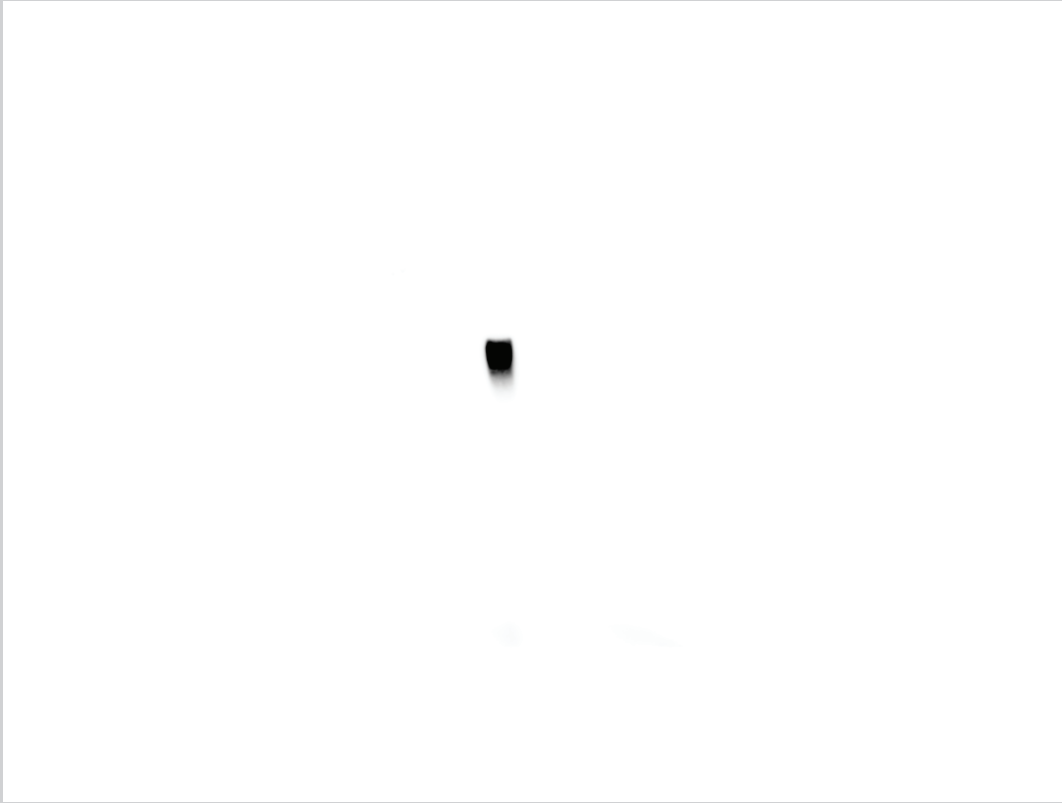
Supplementary Table 1: CoA-Binding Proteins in the Human and Mouse Proteomes

Supplementary Figure 1

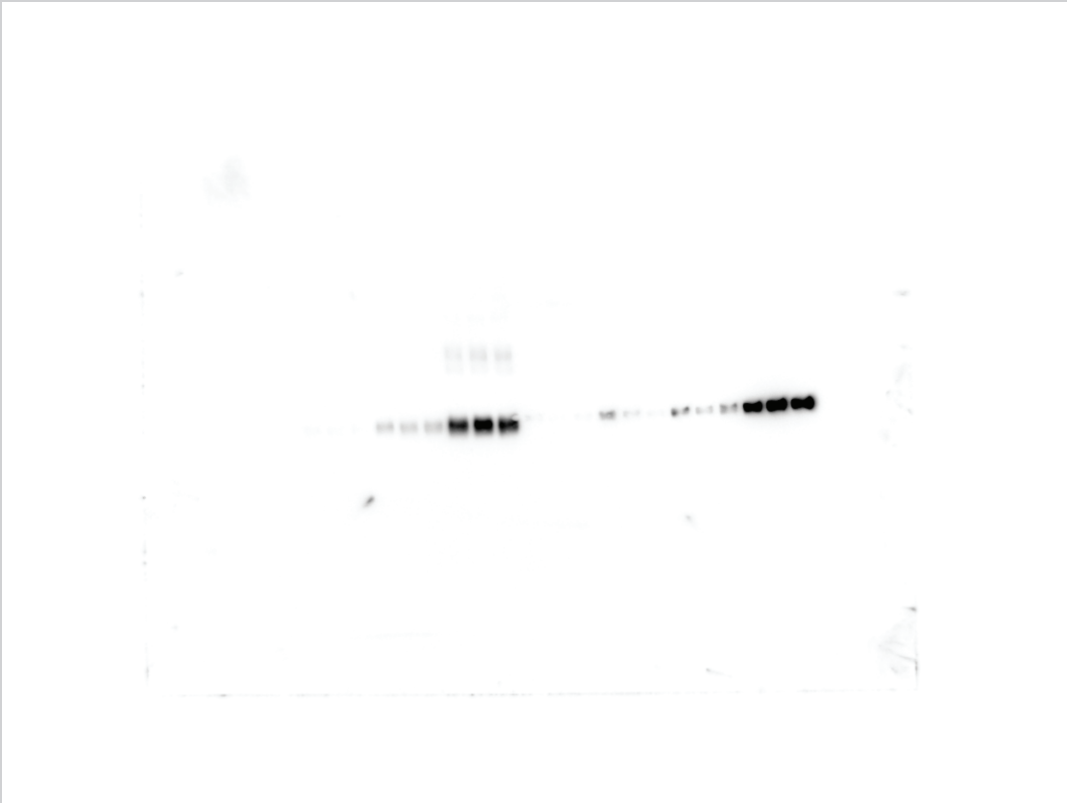


Supplementary Figure 1: Enrichment of acetylated lysines on CoABPs analyzed in a whole-cell human acetylome dataset. Table showing the enrichment of acetylated lysines on CoABPs analyzed in a whole-cell acetylome dataset in human HeLa cells. Statistical significances were calculated using Fisher's exact test.

Source Data
Western Blot raw images
Figure 5B



Source Data
Western Blot raw images
Figure 5C



Source Data
Western Blot raw images with highlighted contrast
Figure 5C

