

SI Figures

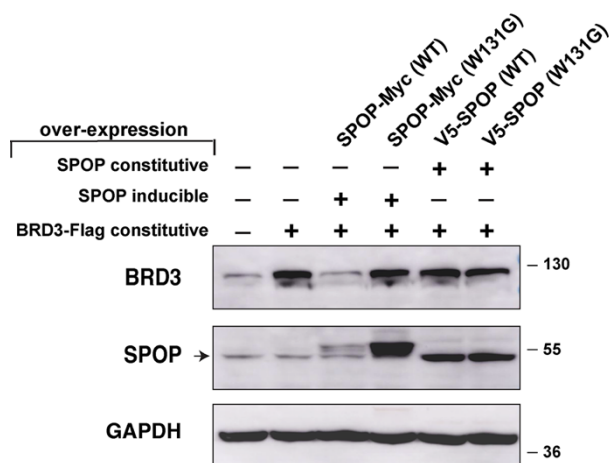


Figure S1. SPOP expression induced close to endogenous levels mediates BRD3 turnover.

T-REx cells were transfected with plasmids for BRD3-Flag and SPOP-Myc (inducible expression) or V5-SPOP (constitutive expression). Twenty-four hours post-transfection, cells were lysed, and the resulting lysates were immunoblotted using antibodies for BRD3, SPOP, and GAPDH (loading control). The expected difference in BRD3 turnover for cells expressing SPOP^{WT} and SPOP^{W131G} is more pronounced with the induced-expression SPOP constructs.

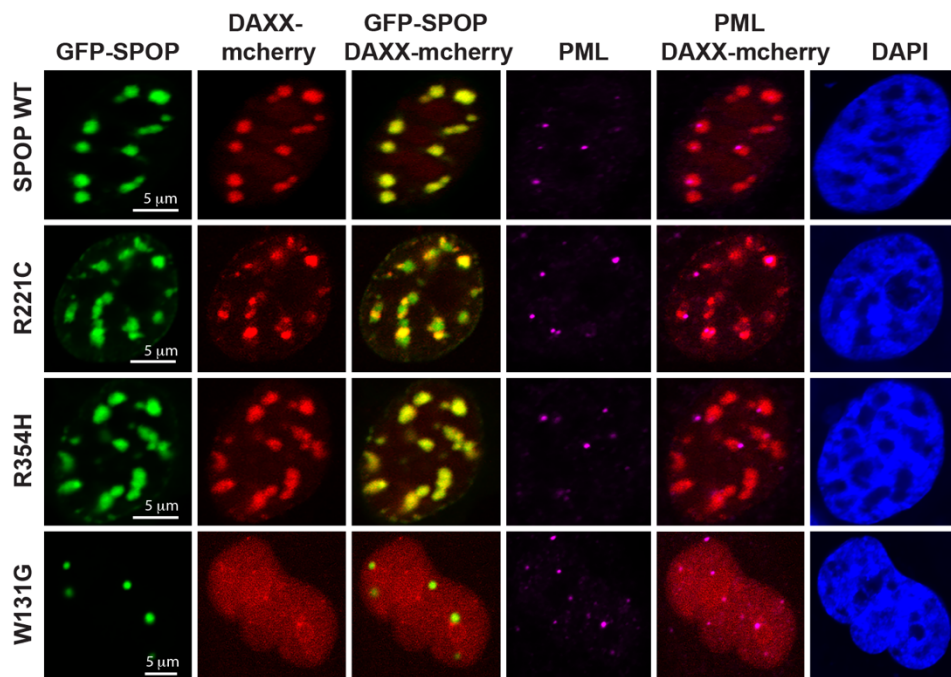


Figure S2.

Representative fluorescence confocal images of HeLa cells expressing GFP-SPOP and DAXX-mCherry constructs. Cells were transfected with the indicated plasmids. Twenty-four hours post-transfection, cells were fixed and immuno-stained using an antibody against PML bodies (magenta). DAPI (blue) marks nuclear DNA.