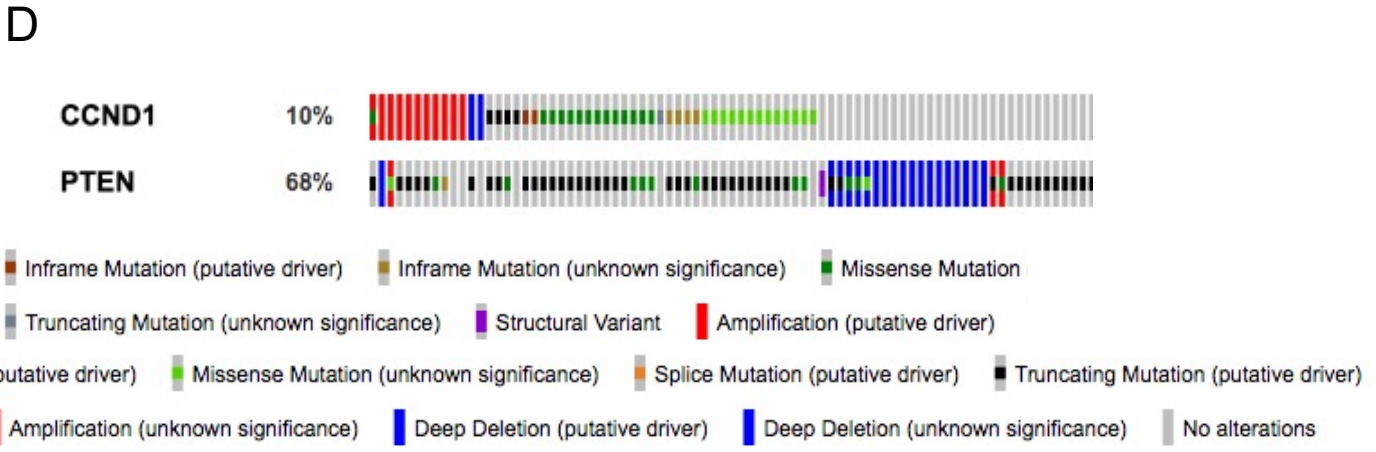
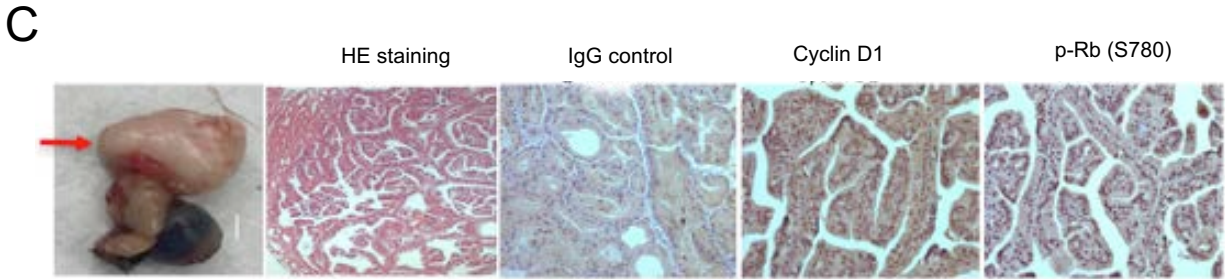
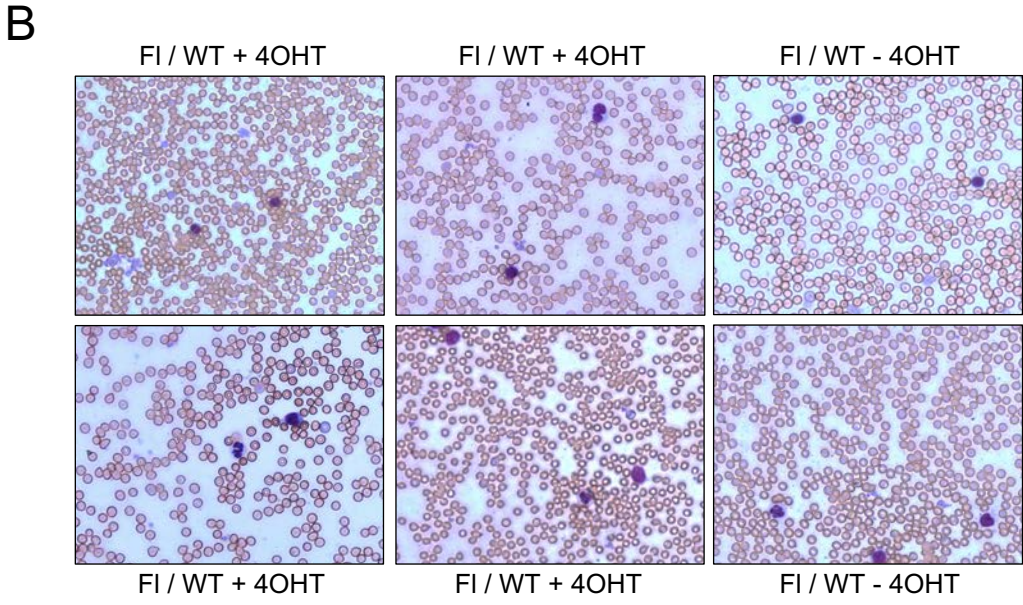
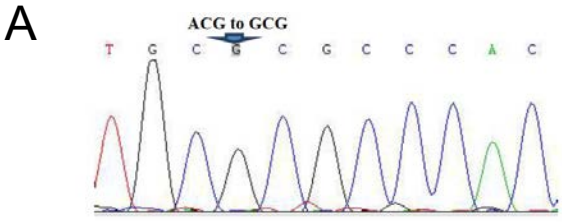


Supplemental Figure 1



Supplemental Figure 1, Continued

E

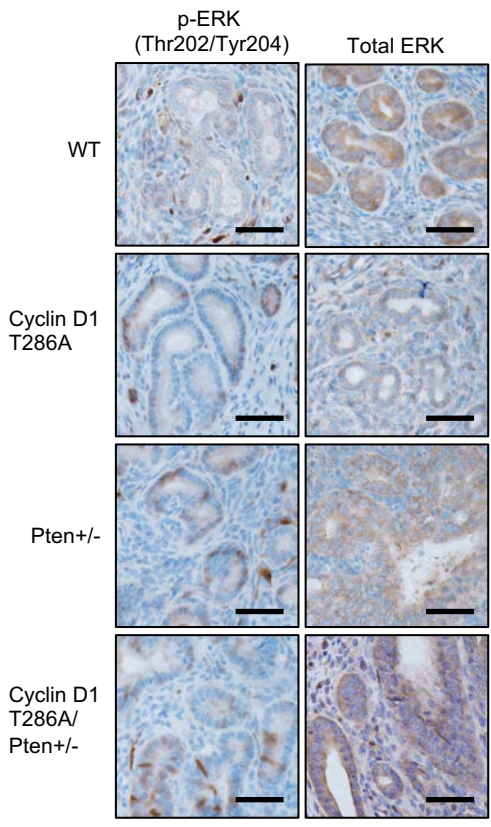


Figure S1. Characterization of cyclin D1 T286A mice.

(A) An arrow indicates the recombination in exon 5 of cyclin D1. A mutation was identified by the Sanger sequence. (B) Peripheral blood smears from cyclin D1^{Fl/WT} mice with or without treatment of tamoxifen (TM). (C) The papillary carcinoma in 9 month old cyclin D1 T286A mice. HE staining and IHC staining for IgG, cyclin D1 and p-Rb (S780) are shown. (D) The gene alterations of cyclin D1 and Pten in endometrial tumors from cBioportal.org. (E) Representative images for immunohistochemistry analysis of uterus from WT, cyclin D1T286A, pten^{+/-} and cyclin D1TA pten^{+/-} using antibodies to detect phosphorylation of ERK (Thr202/Tyr204) and total ERK. Scale bar indicates 50µm.