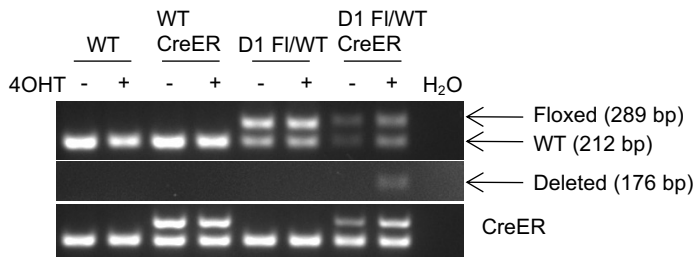
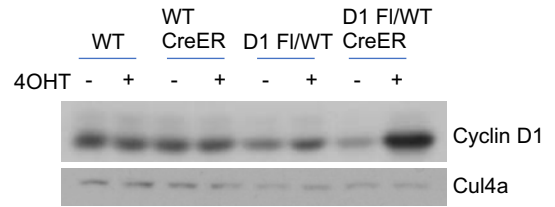


Supplemental Figure 2

A



B



C

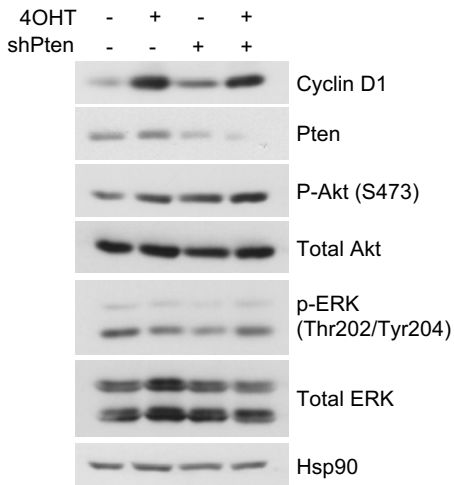


Figure S2. Characterization of cyclin D1^{FI/WT} MEFs.

(A-B) Cyclin D1^{FI/WT, CreER}, cyclin D1^{FI/WT}, cyclin D1^{WT/WT, CreER}, or WT MEFs were treated with or without 4-hydroxytamoxifen (4OHT) (200nM) for 3 days. (A) PCR analysis of genomic DNA (100 ng) isolated from each genotype using F1+R1 and F3+R3 (described in Fig 1). (B) Western blot analysis of lysates from each genotype using antibodies to cyclin D1 and Cul4a. (C). Western blot analysis of lysates from primary cyclin D1^{FI/WT, CreER} mouse embryonic fibroblasts (MEFs) with or without treatment of 4OHT or knockdown of Pten using antibodies to cyclin D1, Pten, phosphorylation of Akt (S473), total Akt, phosphorylation of ERK (Thr202/Tyr204), total ERK and β actin.