

# Supplemental Figure 4

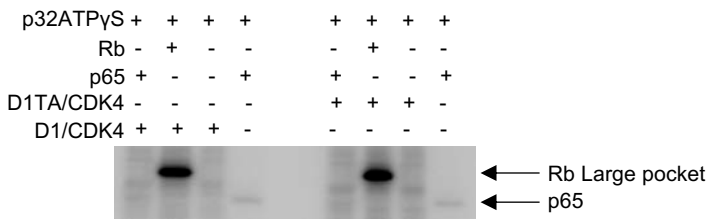


Figure S4. p65 is not a direct substrate for cyclin D1 and CDK4.

1 μg of purified Rb large pocket or p65 recombinant protein was incubated with cyclin D1/CDK4 or cyclin D1T286A/CDK4 purified from sf9 cells and [γ32P] ATP for 30 min at 30 degree. The samples were analyzed by autoradiography following SDS-PAGE and Coomassie staining.