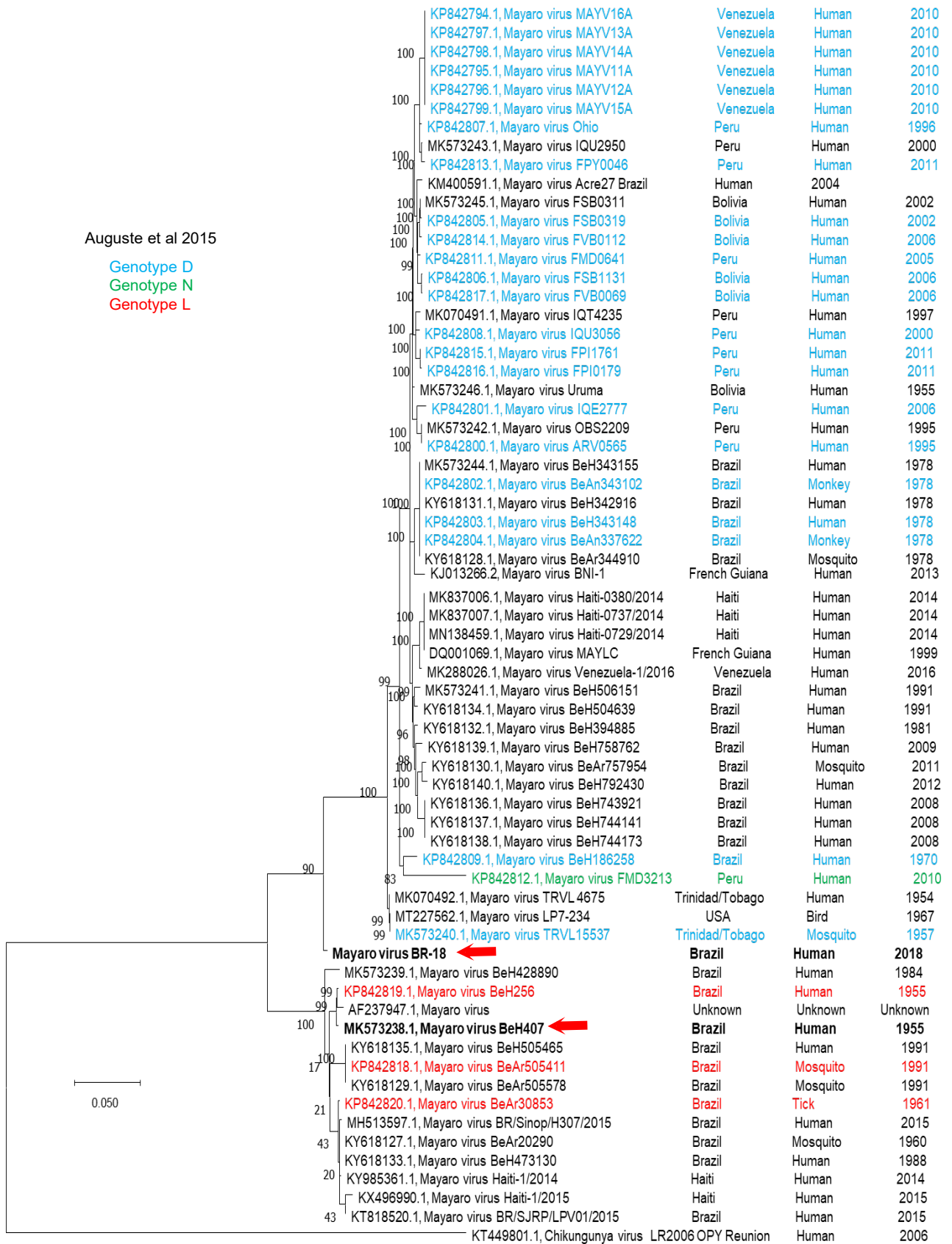
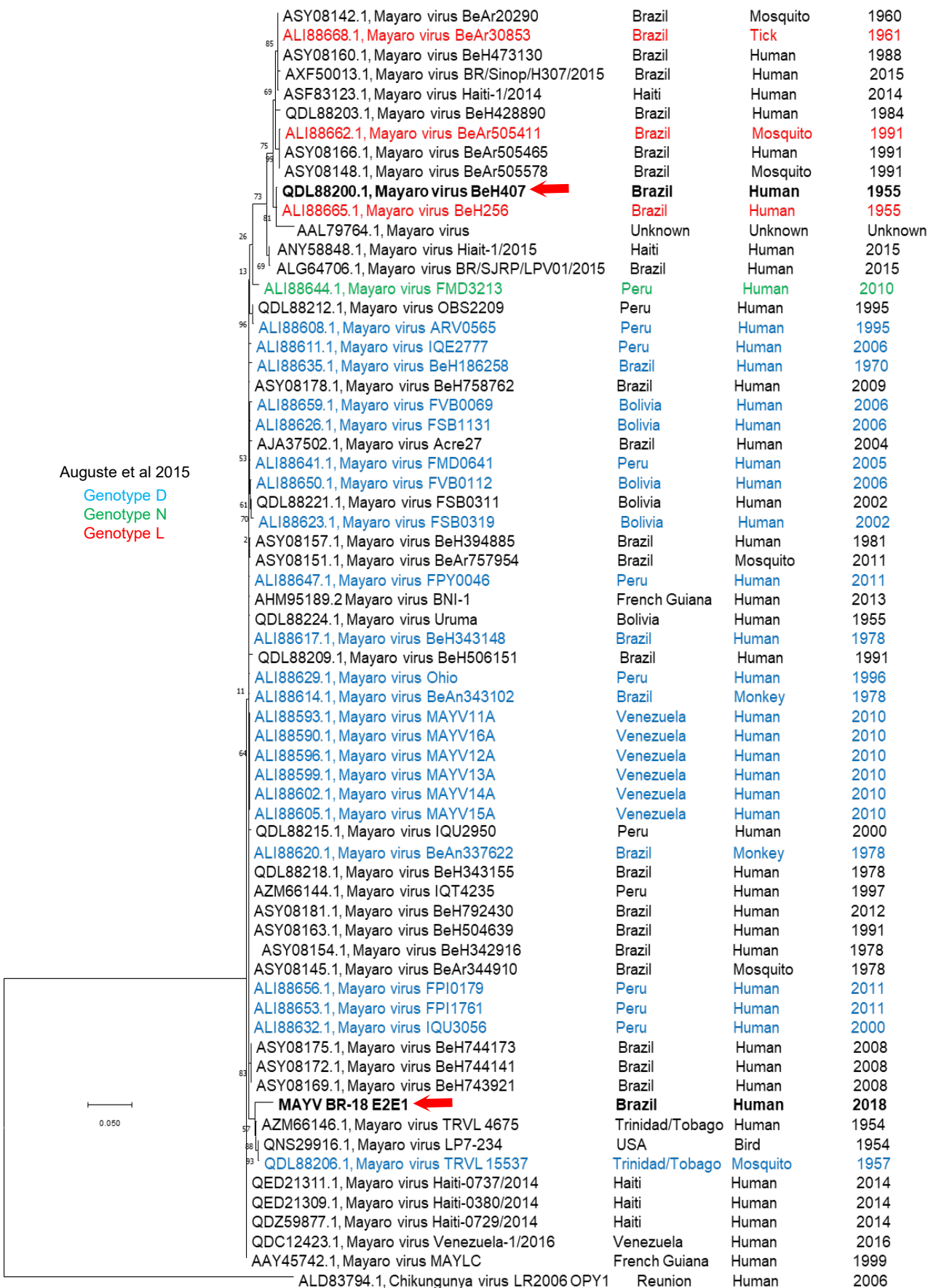


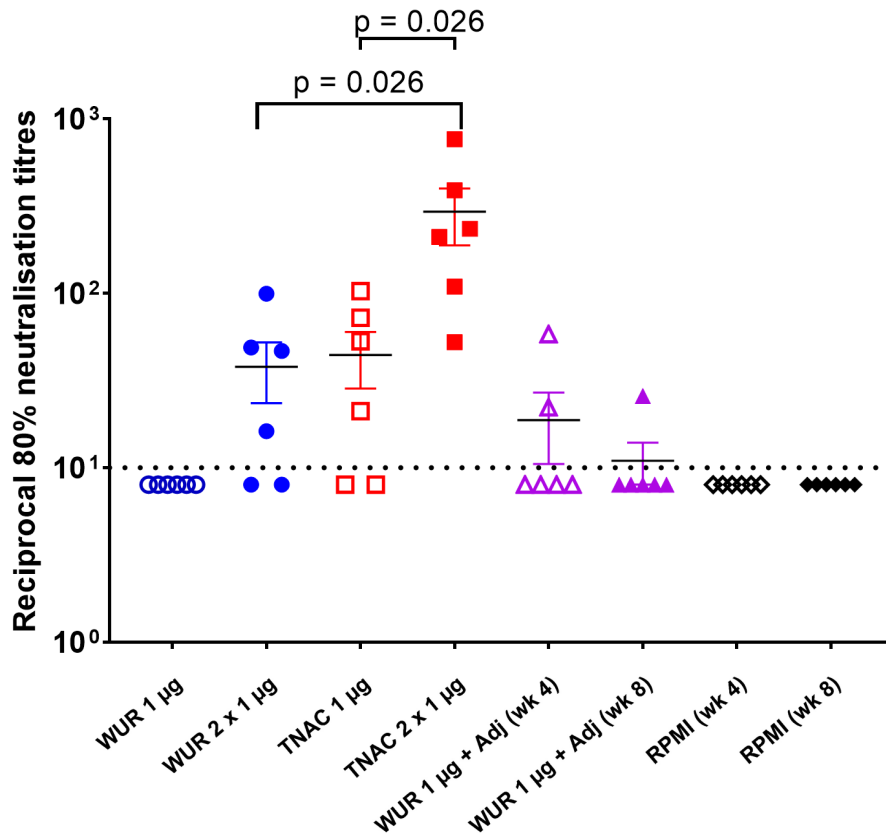
Supplementary Figure 1. Full size histology pictures as presented in Figure 4. M = muscle, T = tendon. Inflammatory infiltrates near joint tissues are indicated (#). Stars (*) indicate subcutaneous oedema; Arrows indicate haemorrhage; Black ovals indicate cellular infiltration in the muscle.



Supplementary Figure 2. Dendrogram using complete genome nucleic acid sequences. Previously described isolates and their genotype allocation as described (Auguste et al., 2015)



Supplementary Figure 3. Dendrogram E2/E1 amino acid sequences. Previously described isolates and their genotype allocation as described (Auguste et al., 2015)



Supplementary Figure 4. MAYV BeH407 80% neutralisation titers after 1 or 2 vaccinations with non-adjuvanted MAYV VLPs or RPMI control, or 1 vaccination with MAYV VLPs with adjuvant. Lines among the dots indicate the mean neutralisation titers and error bars show the standard error of the mean. Dashed line represents the limit of detection (1 in 10 serum dilution). Statistics by Kolmogorov-Smirnov test. Multiple test correction not applied.