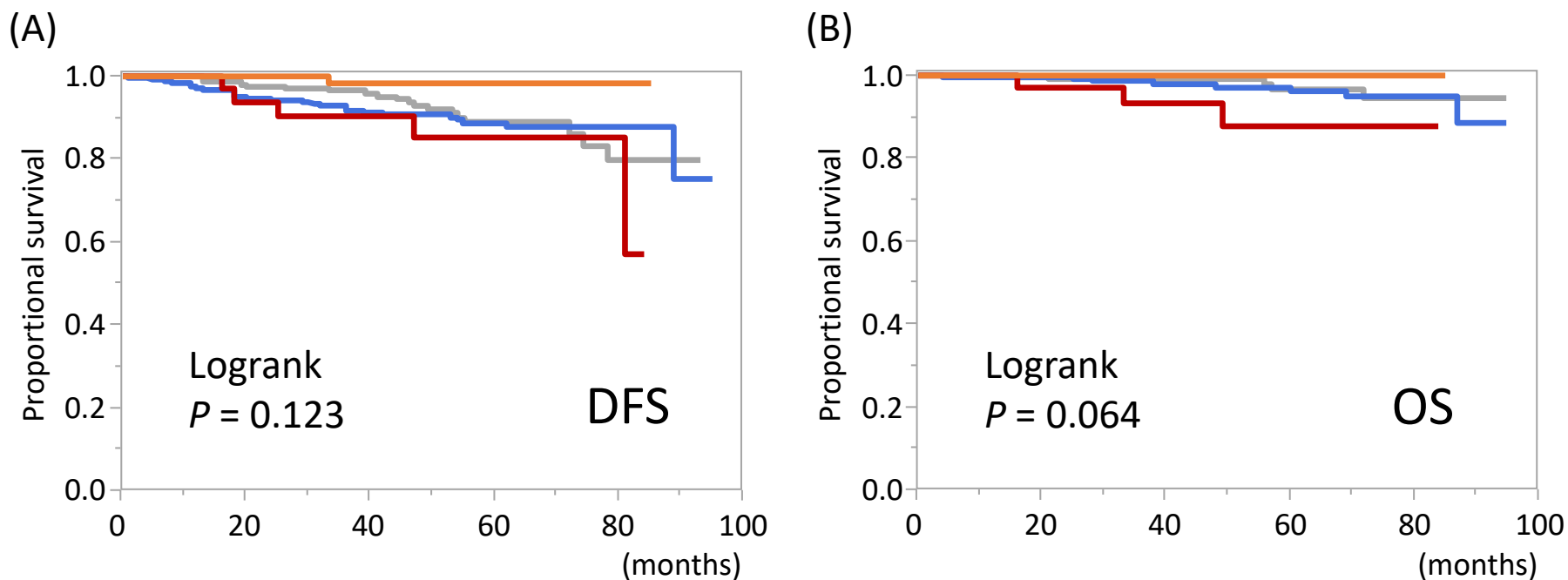


Supplementary Figure 1. Kaplan-Meier curves according to the four patterns of MUC1 staining



Kaplan-Meier curves of (A) disease-free survival (DFS) and (B) overall survival (OS) according to the four patterns of MUC1 staining are shown. Orange, grey, blue and red curves indicate patients with tumors with apical, apical+cytoplasmic, cytoplasmic and negative staining patterns, respectively.