

Supplementary information, Fig. S10

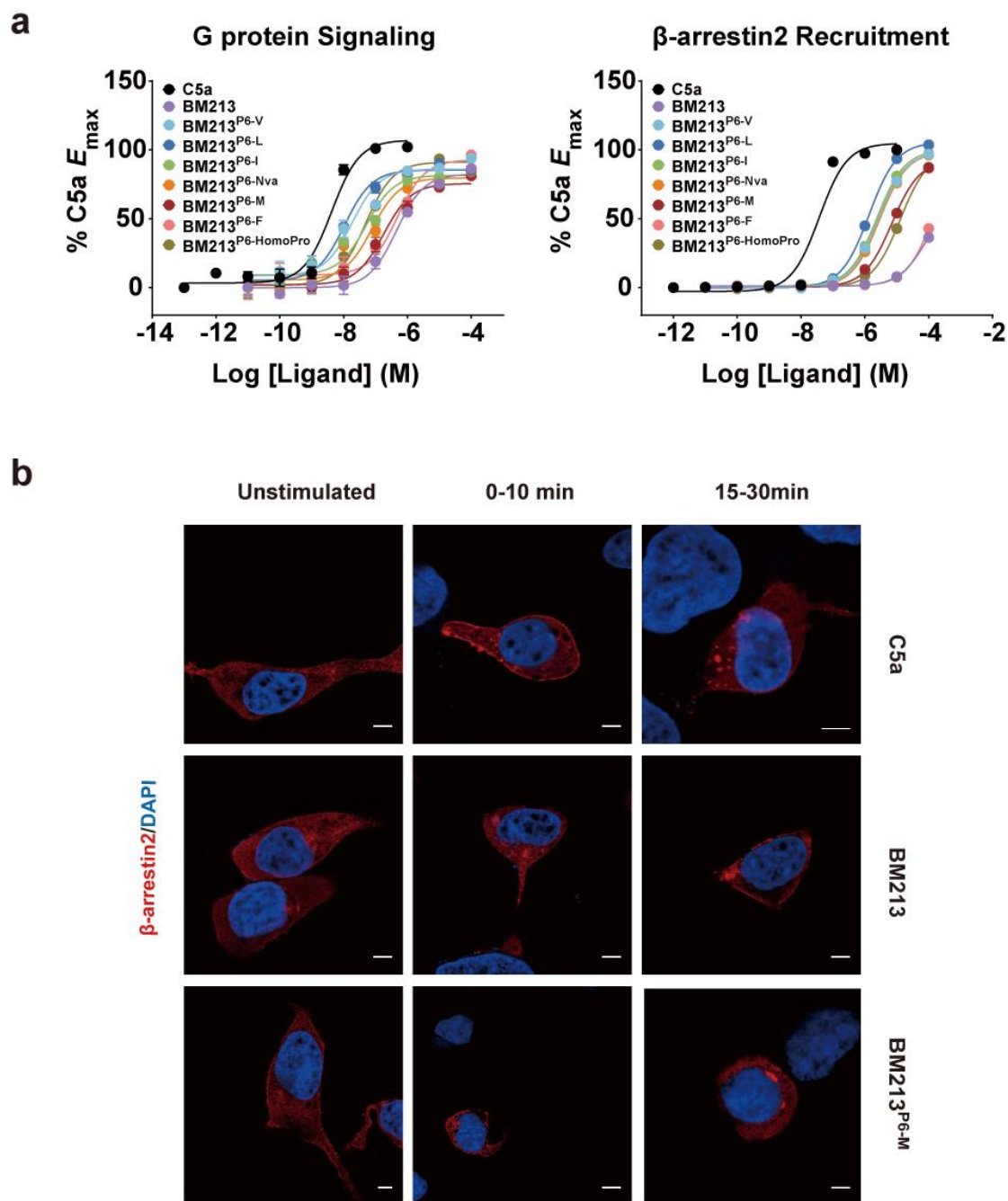


Fig. S10. Effects of mutations at the P6 position of BM213 on G_i and β -arrestin signaling of C5aR1.

a, The signaling properties of BM213 derivatives with modification on the P6 position. The G_i protein signaling was detected by G_i protein dissociation assay (left panel) and the β -arrestin2 recruitment was examined by BRET assay (right panel). Data are presented as the mean \pm SEM of three independent experiments performed in triplicate.

b, Ligands induced endosomal trafficking of β -arrestin2. HEK293 cells expressing C5aR1-WT and mCherry- β -arrestin2 were stimulated with C5a (100 nM), BM213 (100 μ M) and BM213^{P6-M} (100 μ M), and the trafficking patterns of β -arrestin2 were visualized using confocal microscopy at indicated time points. The scale bar represents 5 μ m.