

Supplementary information, Fig. S17

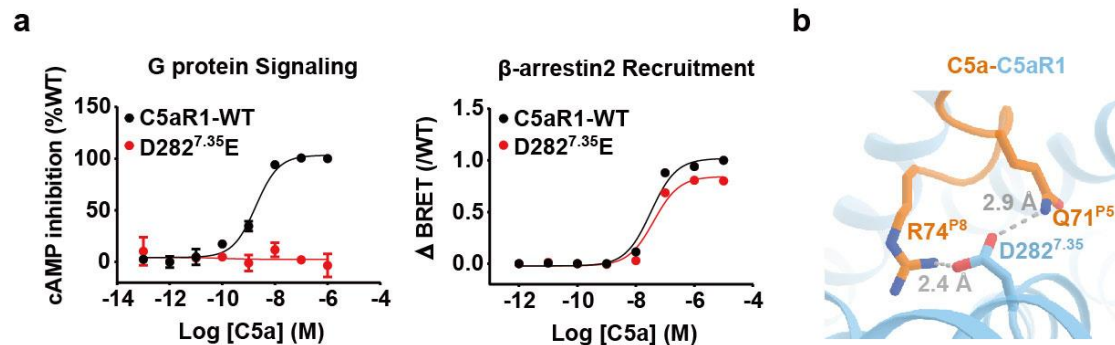


Fig. S17. Effect of D282^{7.35}E on C5aR1 induced downstream signaling in response to C5a.

a, The G protein signaling was monitored by cAMP inhibition assay, the β -arrestin2 recruitment was examined by BRET assay. Data are presented as the mean \pm SEM of three independent experiments performed in triplicate.

b, The interaction between D282^{7.35} of C5aR1 and C5a. The polar interactions were highlighted with grey dashed lines and the corresponding distance were labeled in the figure.