

Supplementary data

Supplementary Table 1. Cumulative incidence of cardiovascular events at 2 years.

	MB	RA	HR	95%CI	P log-rank
TVF*	11%	9%	1.23	0.51-2.96	0.648
MACE**	18%	16%	1.13	0.58-2.22	0.722
All cause death	8%	7%	1.13	0.41-3.31	0.807
Cardiovascular death	5.1%	4.1%	1.24	0.33-4.62	0.747
MI	5%	4%	1.25	0.34-4.67	0.735
Target vessel-related MI	1%	2%	0.49	0.05-5.48	0.559
TVR	9%	5%	1.85	0.62-5.51	0.265
Clinically driven TVR	5%	4%	1.28	0.34-4.76	0.713
TLR	8%	2%	4.1	0.87-19.25	0.053
Clinically driven TLR	4%	1%	4.1	0.45-36.38	0.174
Non TVR	12%	5%	2.49	0.88-7.08	0.075
Clinically driven non TVR	9%	5%	1.85	0.62-5.52	0.262
Stroke	3%	2%	1.34	0.30-5.98	0.701

MACE=major adverse cardiac events; MI=myocardial infarction; TLR=target lesion revascularization; TVF=target vessel failure; TVR=target vessel revascularization.

*defined as as the composite of cardiac death, target vessel-related myocardial infarction (MI), and clinically driven target vessel revascularization (TVR)

**defined as the composite of all cause death, MI and TVR

Supplementary Table 2. Uni- and multivariate regression analysis for predictors of 2-year target vessel failure.

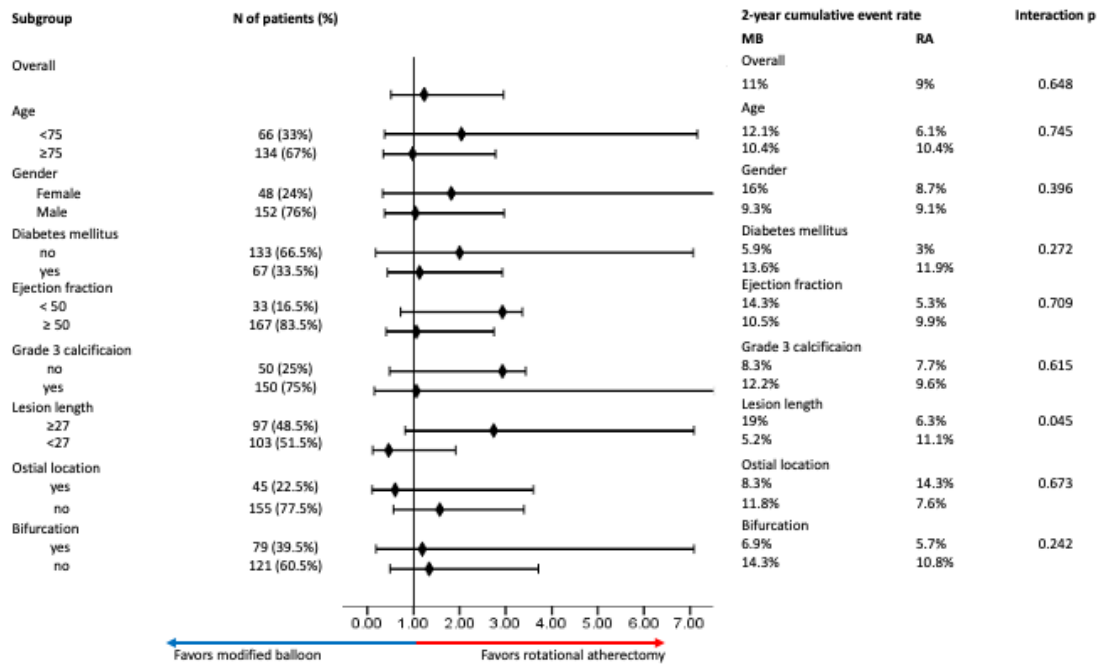
Variable	HR (95% CI)		P value	HR (95% CI)		P value
Age	1.01	(0.947 – 1.074)	0.789	-		
Female sex	1.36	(0.524 – 3.547)	0.526	-		
Hypertension	1.83	(0.759 – 4.419)	0.178	-		
Diabetes mellitus	2.95	(0.865 – 10.073)	0.084	3.67	(1.04 – 12.85)	0.043
Dyslipidemia	1.83	(0.759 – 4.419)	0.178	-		
Smoking (current)	2.34	(0.676 – 8.071)	0.180	2.13	(0.61 – 7.38)	0.235
CKD	2.19	(0.677 – 12.583)	0.151	2.74	(0.64 – 11.85)	0.175
EF (continuous)	0.978	(0.943 – 1.014)	0.222	-		
EF <50 (categorical)	0.861	(0.252 – 2.940)	0.812	-		
Severe calcification	1.37	(0.457 – 4.086)	0.577	-		
Ostial lesion	1.17	(0.426 – 3.227)	0.758	-		
Bifurcation lesion	0.488	(0.177 – 1.343)	0.165	0.51	(0.18 – 1.42)	0.200
Lesion length	1.018	(0.991 – 1.045)	0.193	1.02	(0.99 – 1.05)	0.176
Lesion length \geq 27 mm	1.622	(0.663 – 3.967)	0.290	-		
Stent expansion < 80	1.576	(0.434 – 5.725)	0.490	-		

CKD= chronic kidney disease; EF= ejection fraction

Supplementary Table 3. Uni- and multivariate regression analysis for predictors of 2-year target lesion revascularisation.

Variable	HR (95% CI)		P value	HR (95% CI)		P value
Age	1.00	(0.916-1.092)	0.995	-		
Female sex	0.790	(0.168-3.719)	0.765	-		
Hypertension	1.079	(0.279-4.171)	0.913	-		
Diabetes mellitus	1.345	(0.380-4.766)	0.646	-		
Dyslipidemia	1.079	(0.279-4.171)	0.913	-		
Smoking (current)	0.876	(0.177-4.342)	0.871	-		
CKD	0.796	(0.169-3.751)	0.773	-		
EF (continuous)	1.025	(0.957-1.097)	0.481	-		
Severe calcification	3.142	(0.398-24.797)	0.277	-		
Ostial lesion	2.330	(0.657-8.256)	0.190	11.3	(2.26-56.8)	0.003
Bifurcation lesion	0.165	(0.021-1.301)	0.087	0.09	(0.01-0.79)	0.030
Lesion length	1.042	(1.008-1.077)	0.016	1.06	(1.02-1.09)	0.003
Lesion length \geq 27mm	4.357	(0.925-20.518)	0.063	-		
Stent expansion < 80	1.826	(0.204-16.336)	0.590	-		

CKD= chronic kidney disease; EF= ejection fraction



Supplementary Figure 1. Subgroup analysis of TVF.

MB: modified balloon; RA: rotational atherectomy; TLR: target lesion revascularisation; TVF: target vessel failure.