

1 **SUPPLEMENTAL MATERIAL**

2

3 Uncropped Figures

4

5 **Fig S1 Caspase-8 is not activated on mitochondria of HSV-1-infected MEFs.** Anti-
6 caspase-8 western blot analysis of mitochondrial extracts of MEFs either mock-infected (0
7 h) or infected with 10 m.o.i. of SFV for 4, 8 and 14 h or with 10 m.o.i. of HSV-1 for 8, 14 and
8 24 h. No caspase-8 is detected on mitochondria in mock-infected cells. SFV leads to
9 mitochondrial translocation of p55 pro-caspase-8 in 4 h followed by its processing into active
10 p43/p41 and p18 forms within 8-14 h. HSV-1 provokes mitochondrial translocation of pro-
11 caspase-8 only at 24 h without its activation/processing. The α -subunit of mitochondrial
12 ATPase (complex V) served as a loading control.

13

14 **Fig S2 Caspase-8 activation does not depend on p38 MAPK activation in HSV-1-**
15 **infected MEFs.** Caspase-8 (IETDase) activity assay of total extracts of wt MEFs either
16 mock-infected (0 h) or infected with 10 m.o.i. of HSV-1 for 8, 14 and 24 h in the absence
17 (NT) or presence of 20 μ M of the p38 MAPK inhibitor SB203580. Inhibition of p38 MAPK
18 does not affect caspase-8 activation in response to HSV-1 infection. Data represent the
19 means of 3-6 independent experiments \pm SD. Statistical evaluation by one-way ANOVA: **p
20 < 0.01; ***p < 0.001.

21

22

23

24

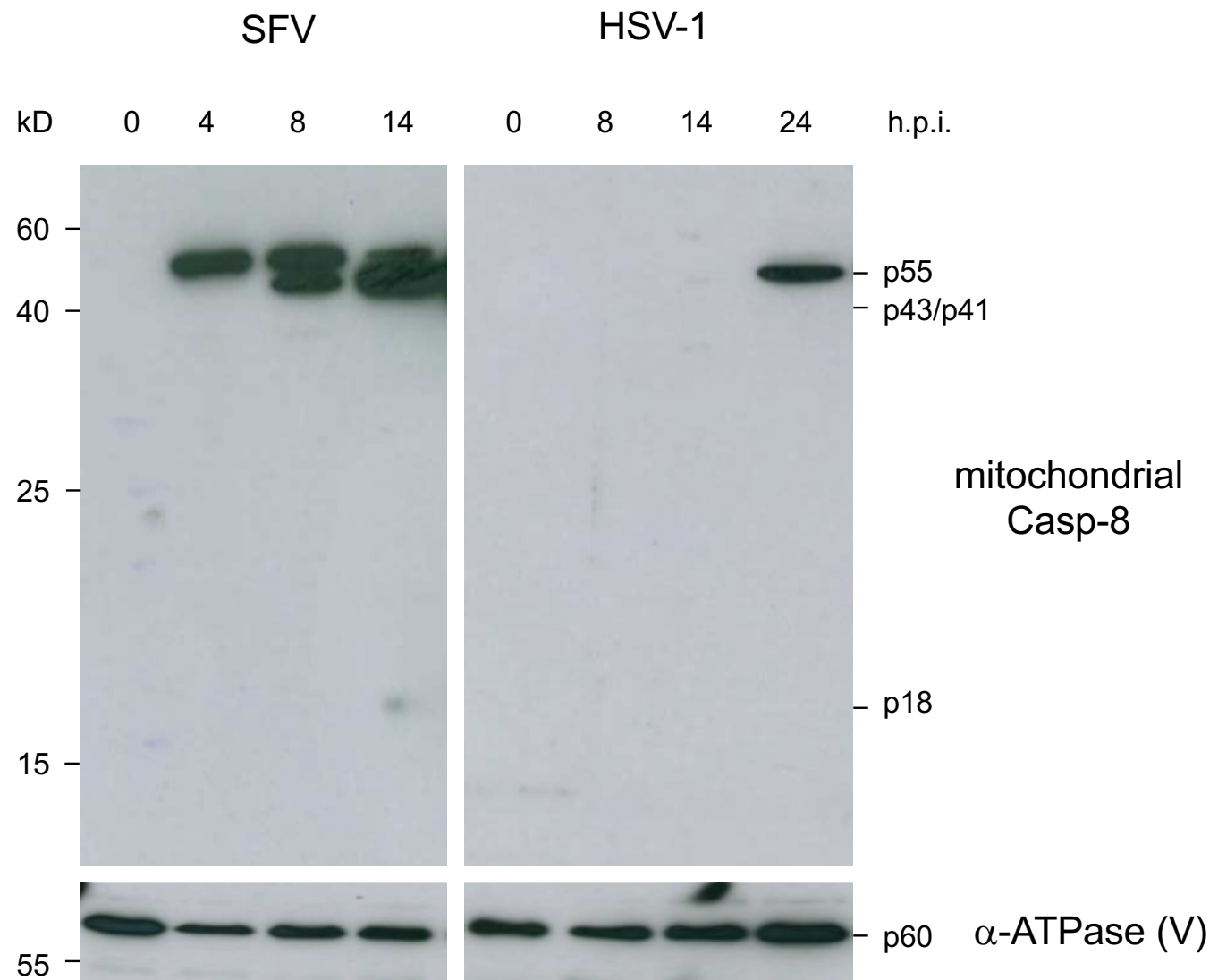


Figure S1

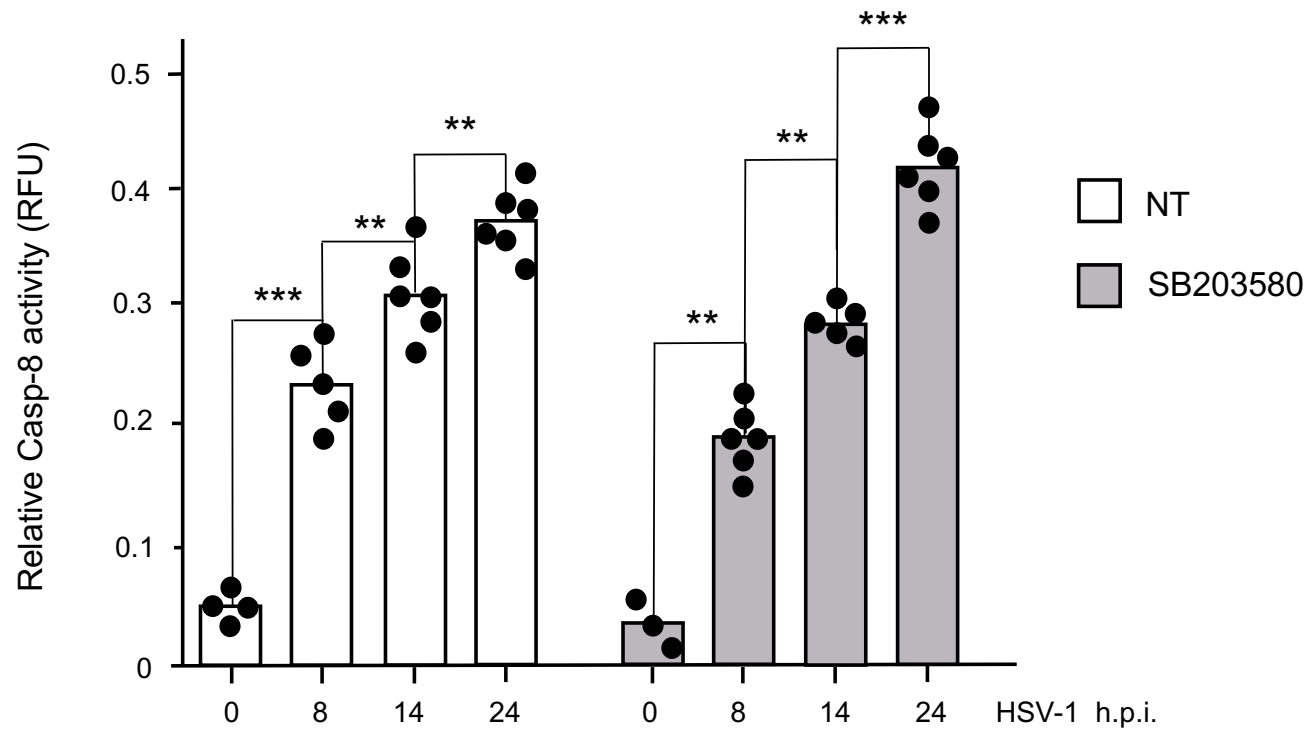


Figure S2

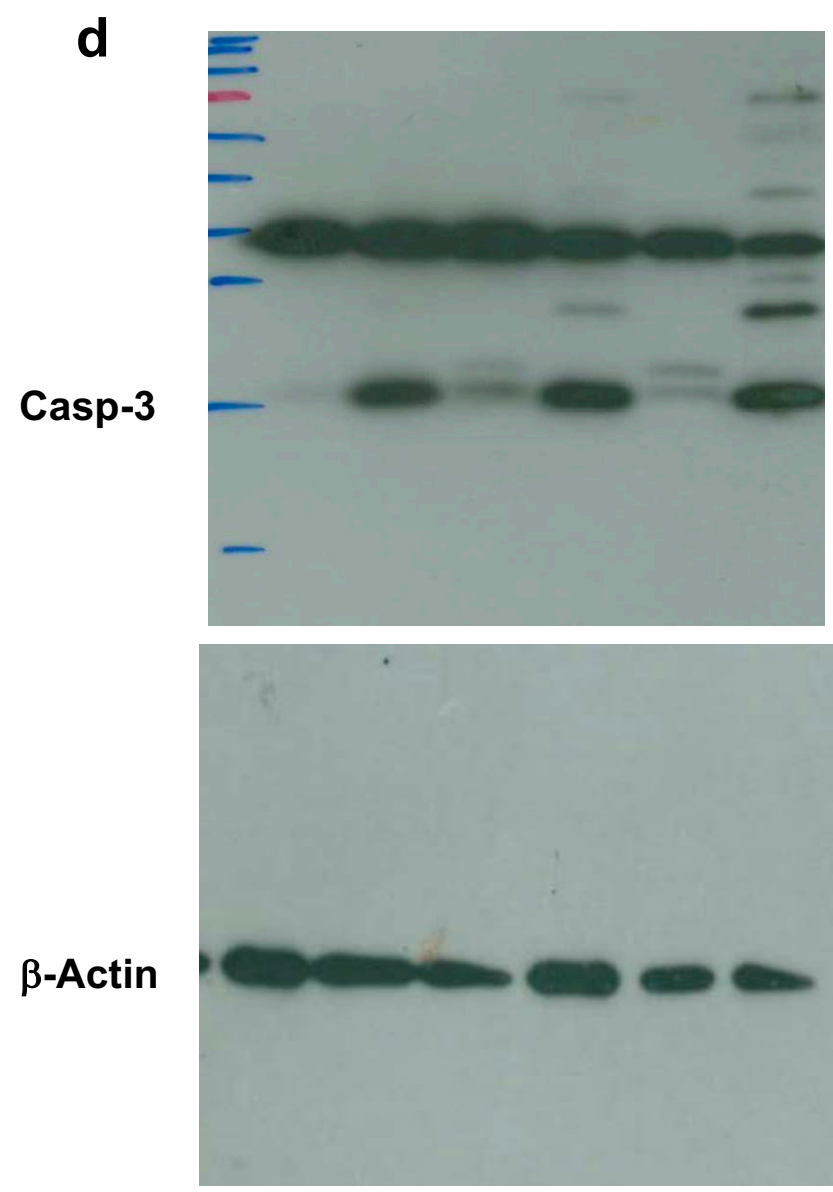
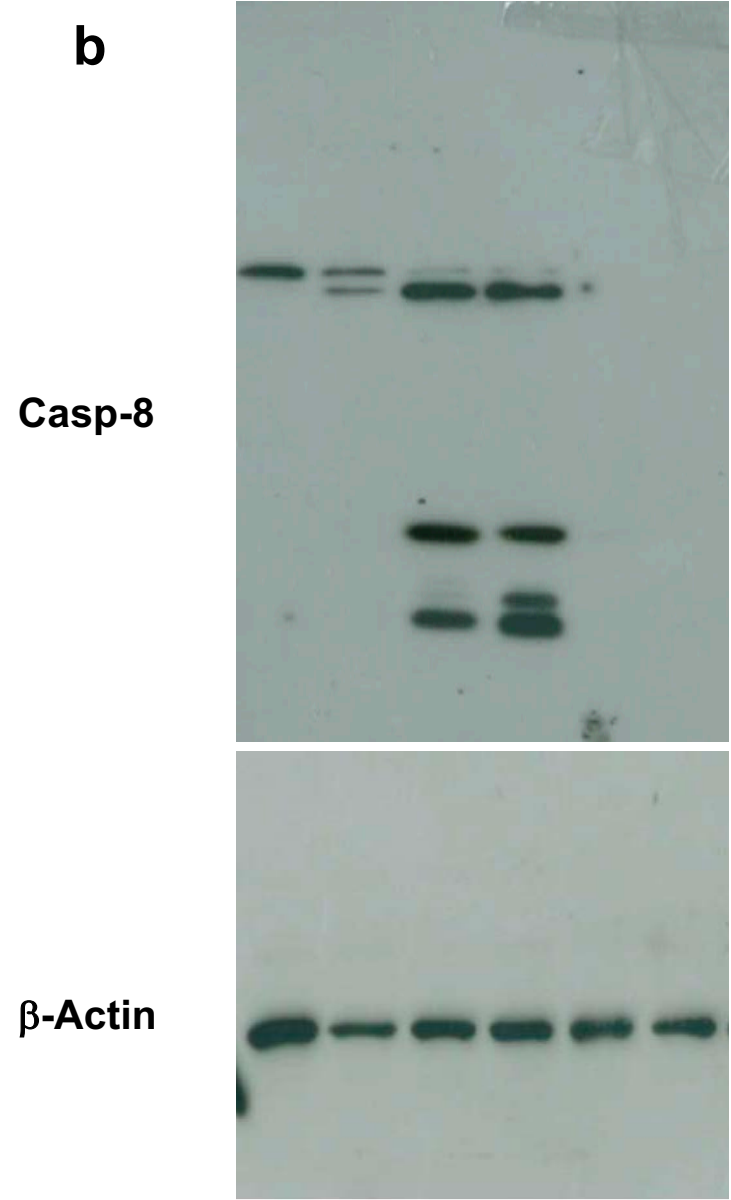
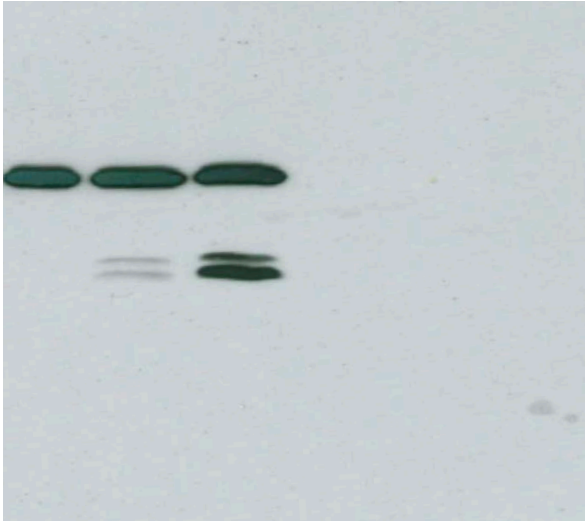


Figure 1

c

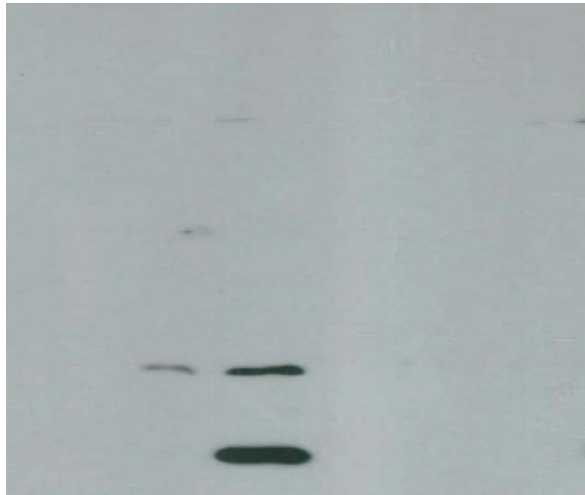
p55/p41/43 Casp-8



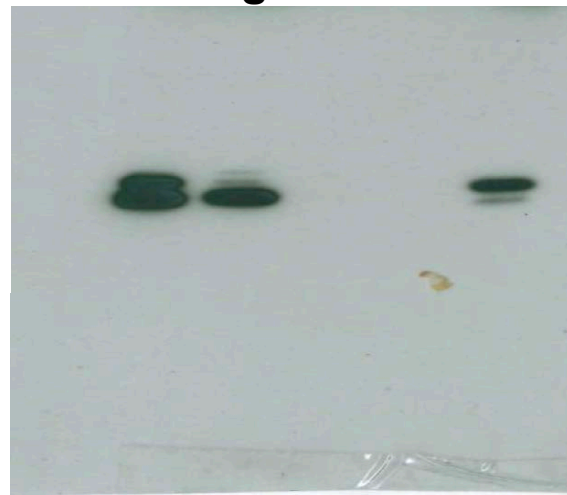
Casp-3



p10/p18 Casp-8



gD



β -Actin

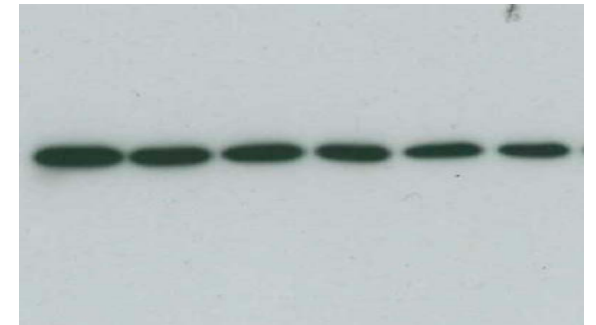
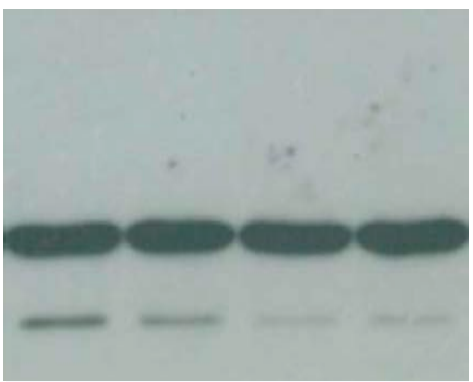
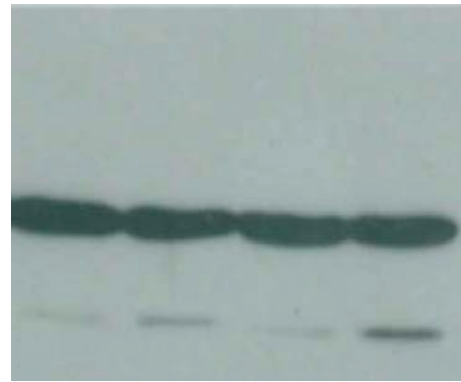
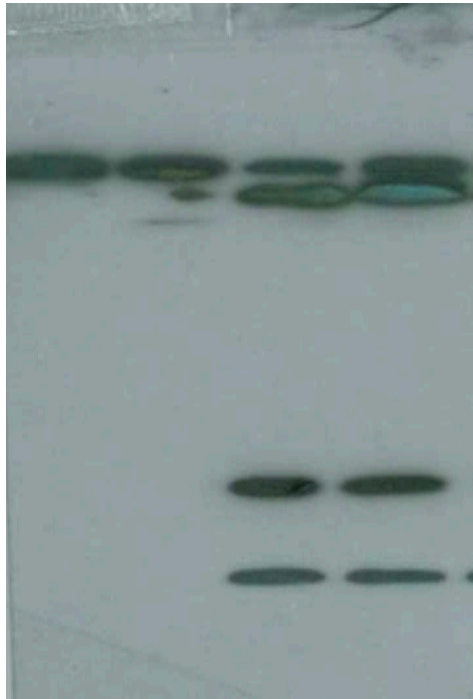
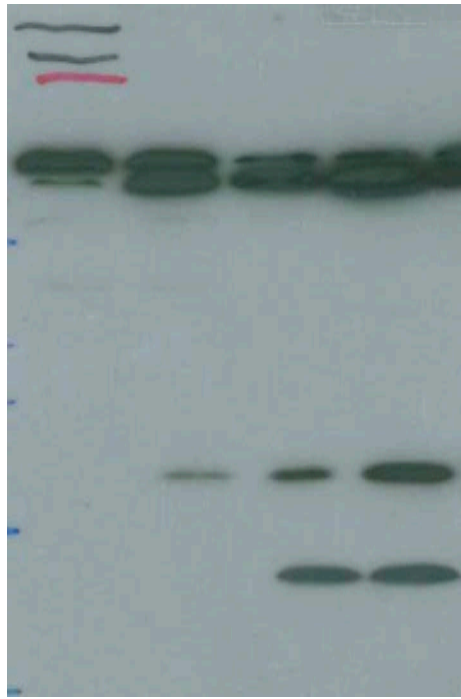


Figure 2

a

wt

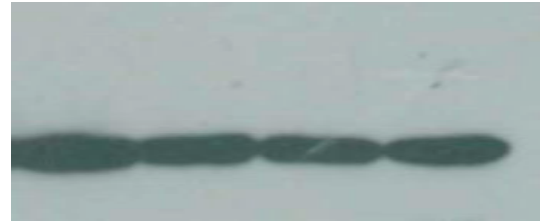
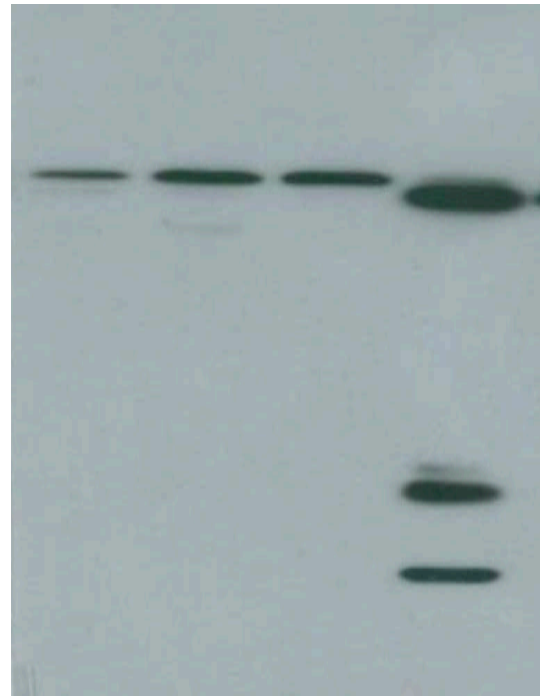
FADD KD



b

FADD KD

wt



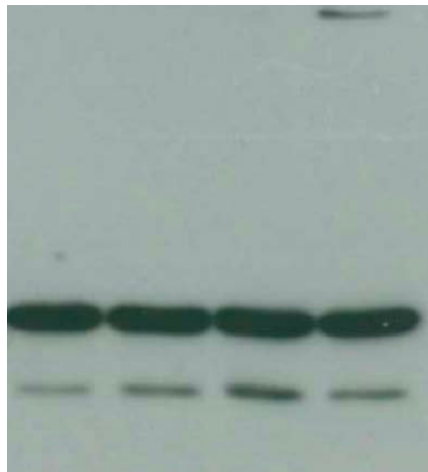
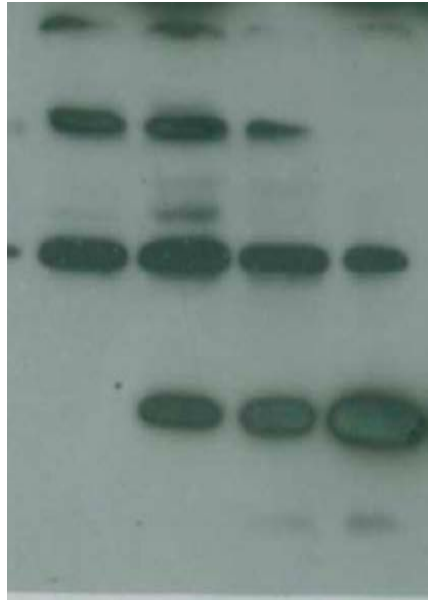
Caspase-8

β -Actin

Figure 3

C

wt



FADD KD



Caspase-3

β -Actin

Figure 3

e

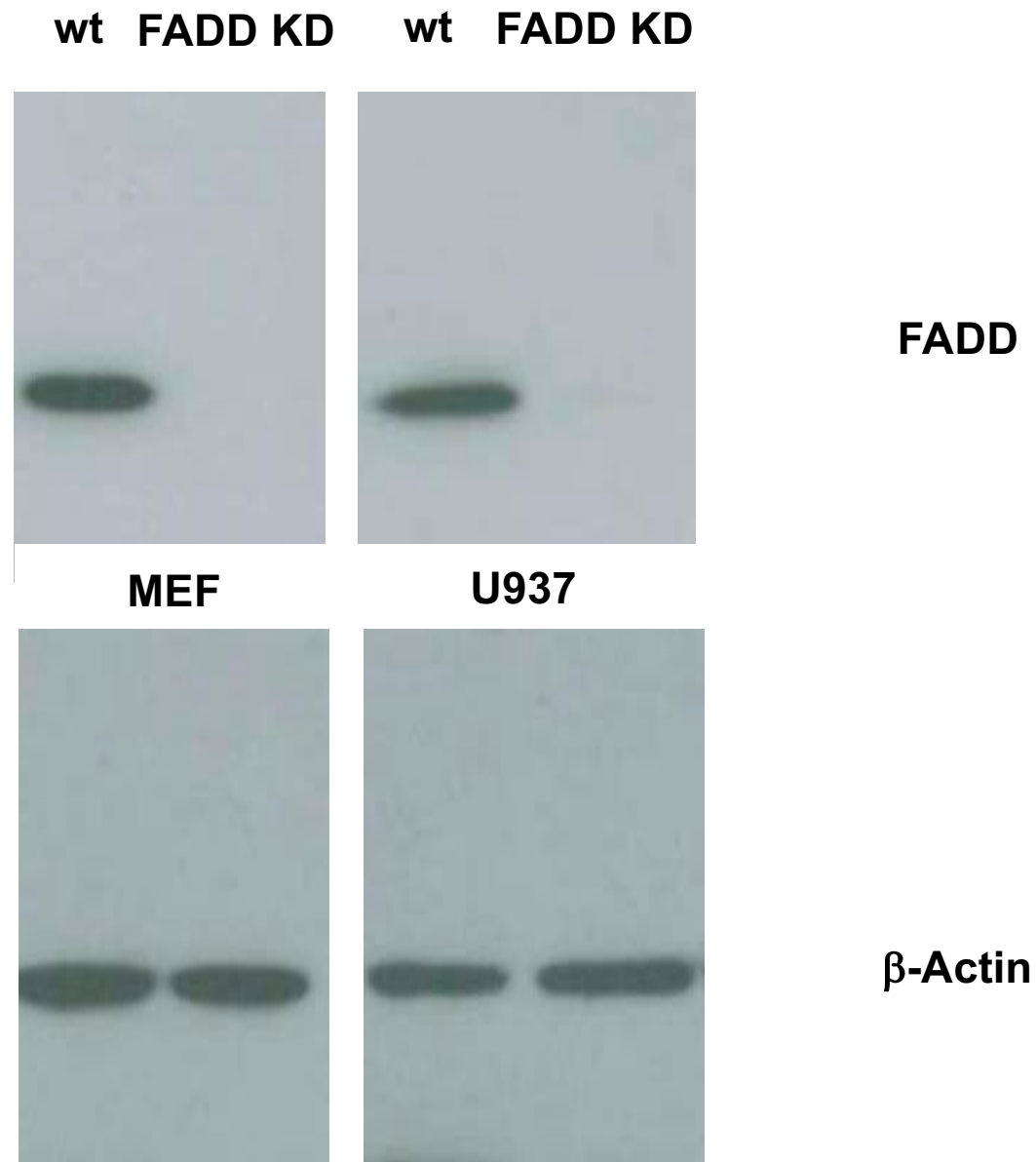
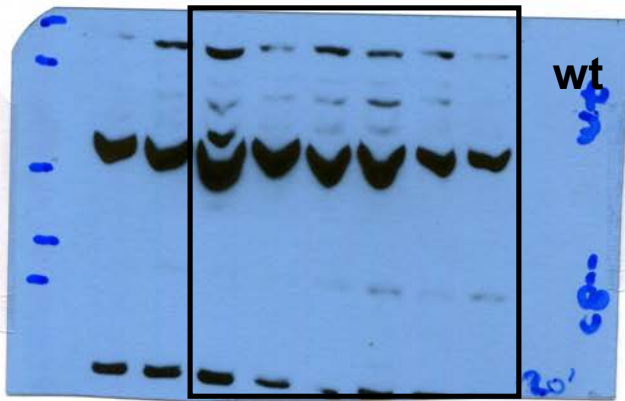


Figure 3

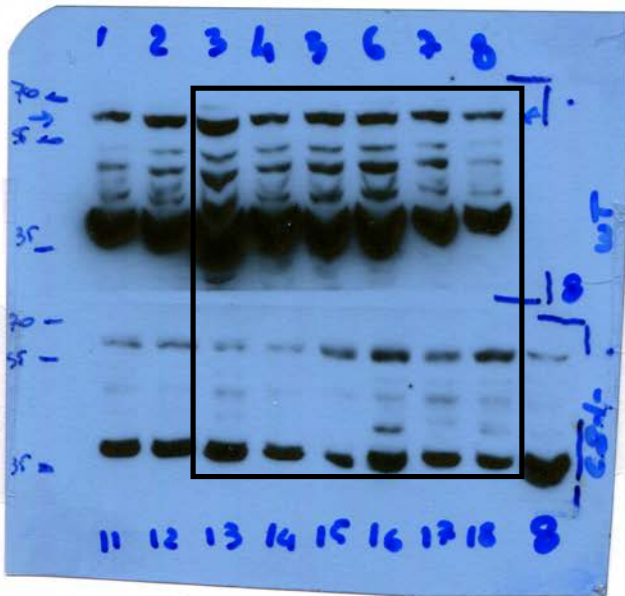
a



wt
Beclin

Gel 1 wt cells

- 1 mock
- 2 HSV-1 4h
- 3 mock
- 4 HSV-1 8h
- 5 mock
- 6 HSV-1 16h
- 7 mock
- 8 HSV-1 24h

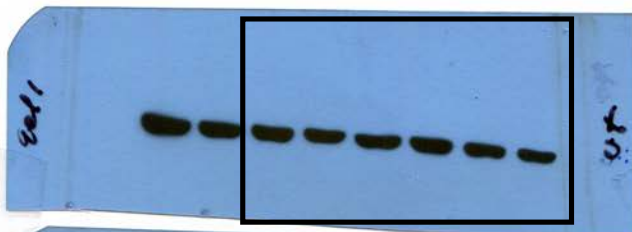


wt
Beclin

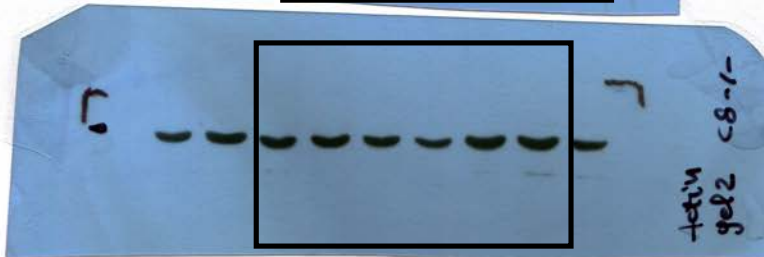
C8-/-
Beclin

Gel 2

- 11 mock
- 12 HSV-1 4h
- 13 mock
- 14 HSV-1 8h
- 15 mock
- 16 HSV-1 16h
- 17 mock
- 18 HSV-1 24h
- 8* wt + HSV-1 24h



wt
 β -Actin



C8-/-
 β -Actin

Figure 5

C

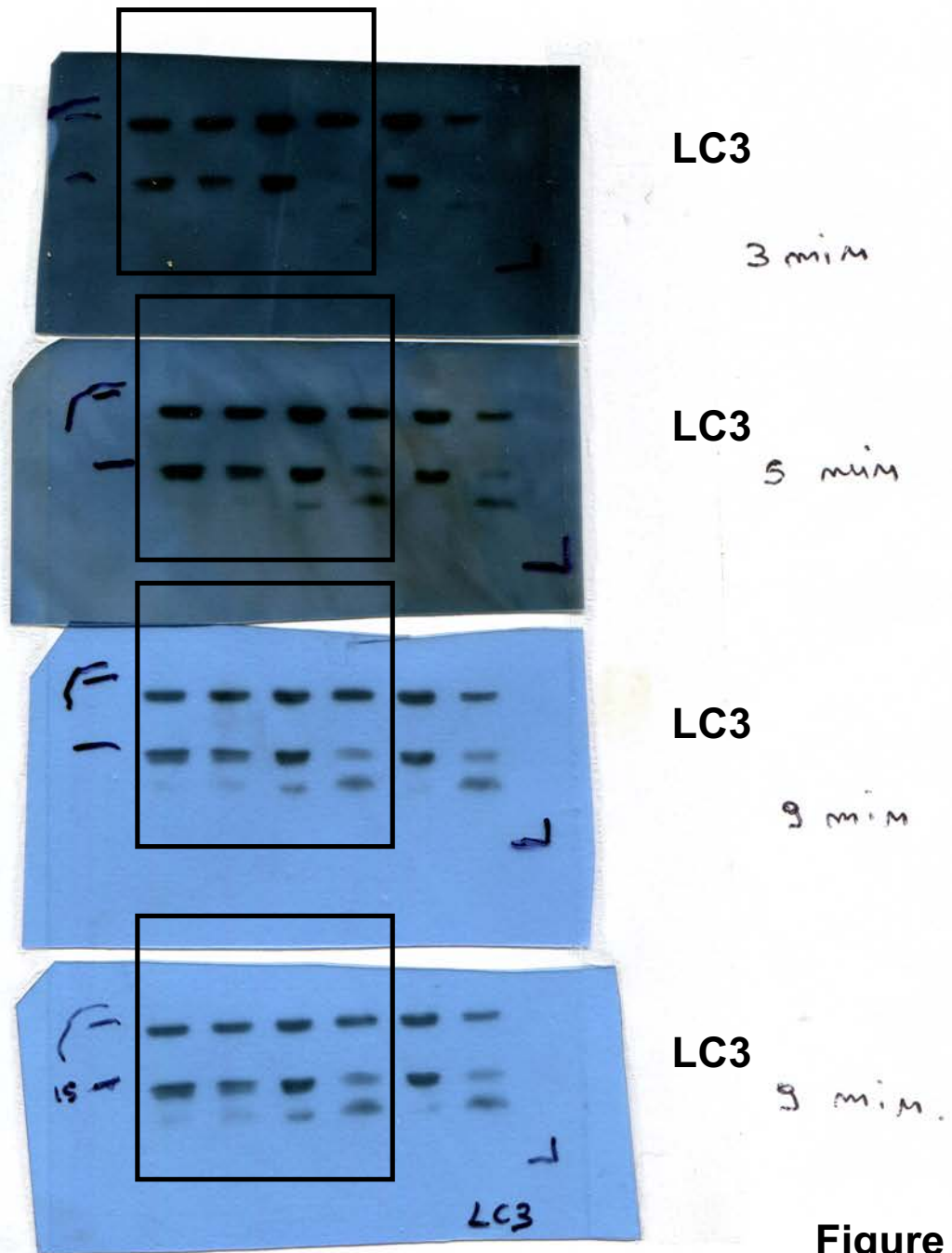
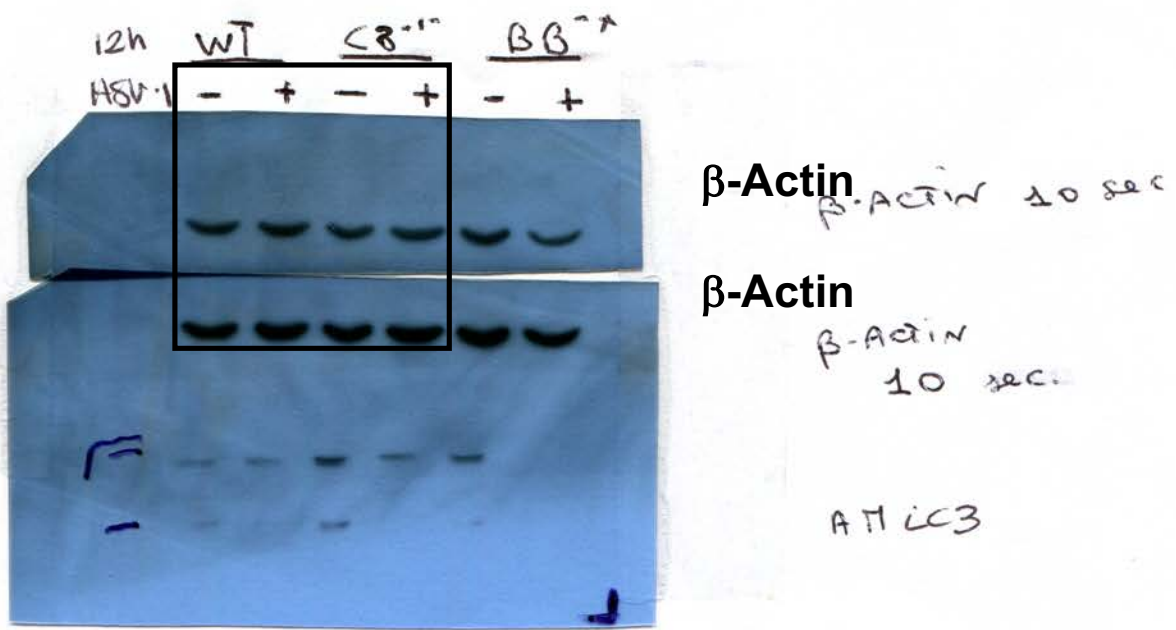


Figure 5

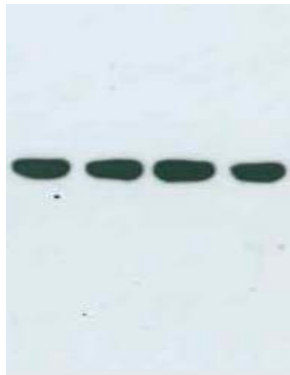
e



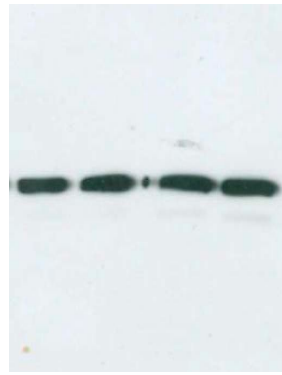
wt Beclin-1



C3-/- Beclin-1

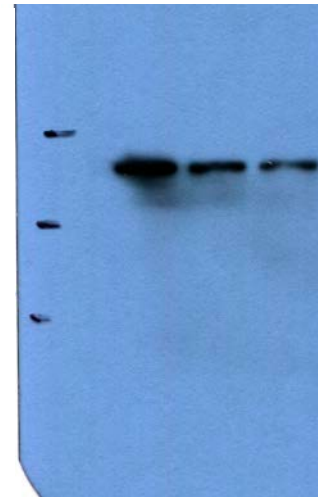


wt β -Actin

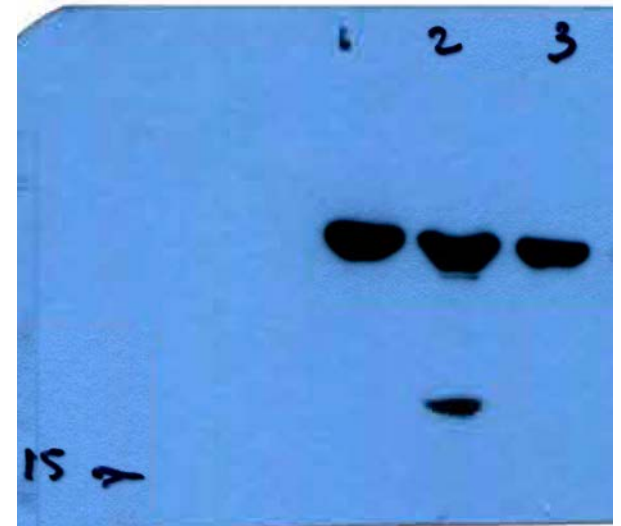


C3-/- β -Actin

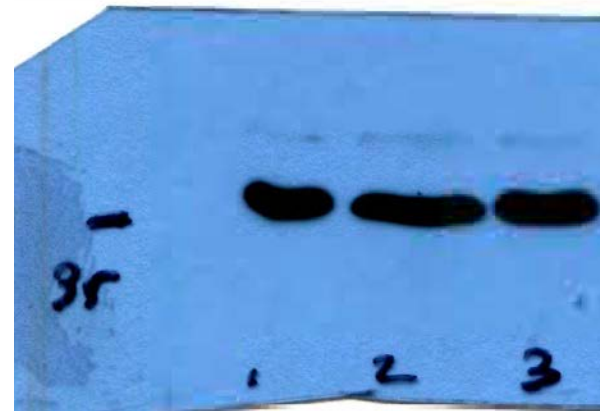
f



Beclin-1 \pm Casp Inh



Casp-3 \pm Casp Inh



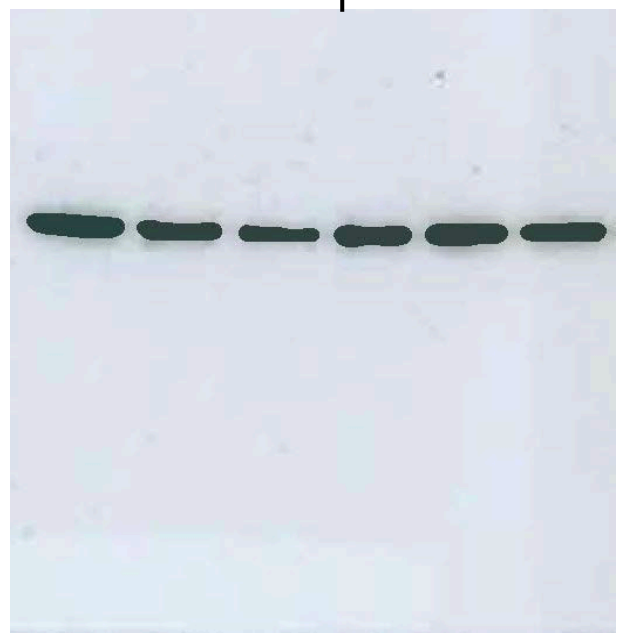
Actin \pm Casp Inh

Figure 5

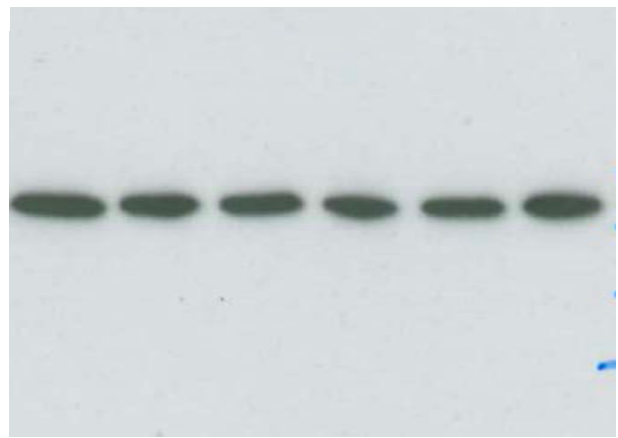
g

Casp-8^{-/-}

wt



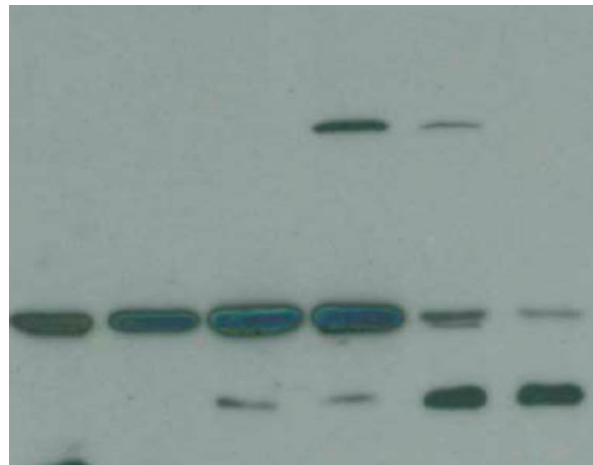
p62



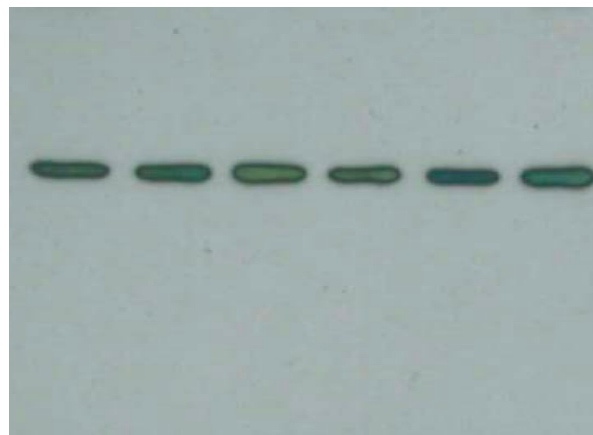
β-Actin

Figure 5

a



LC3-I/II



β-Actin

Figure 6

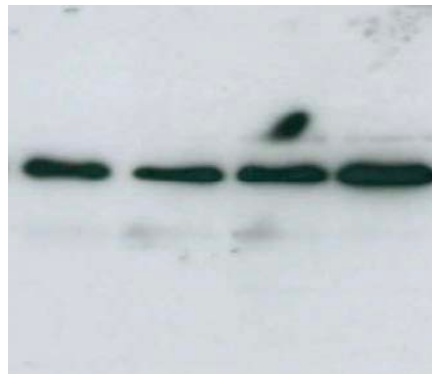
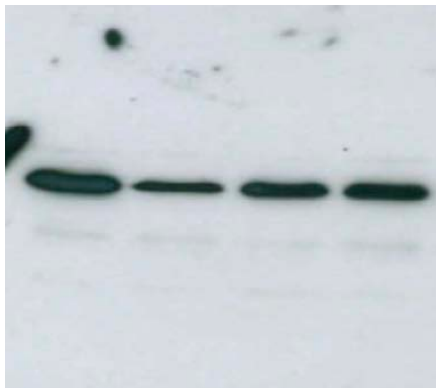
SFV-1



HSV-1



**Mitochondrial
Caspase-8**



α -ATPase (V)

Suppl. Figure 1