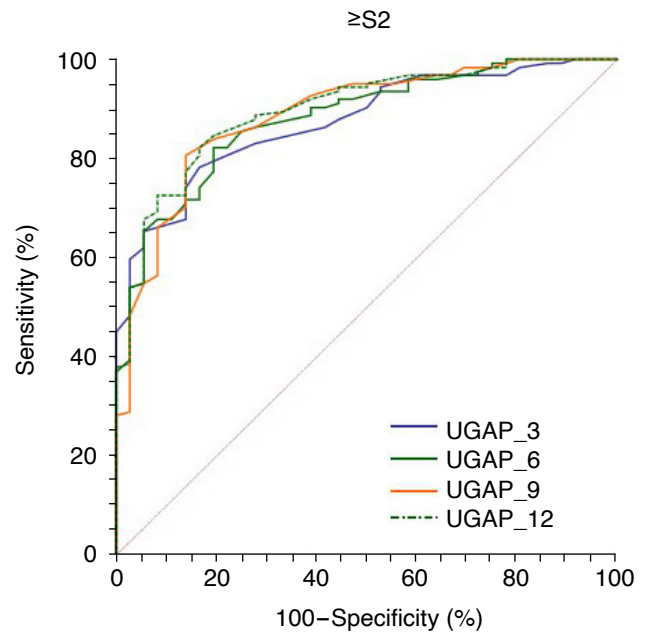
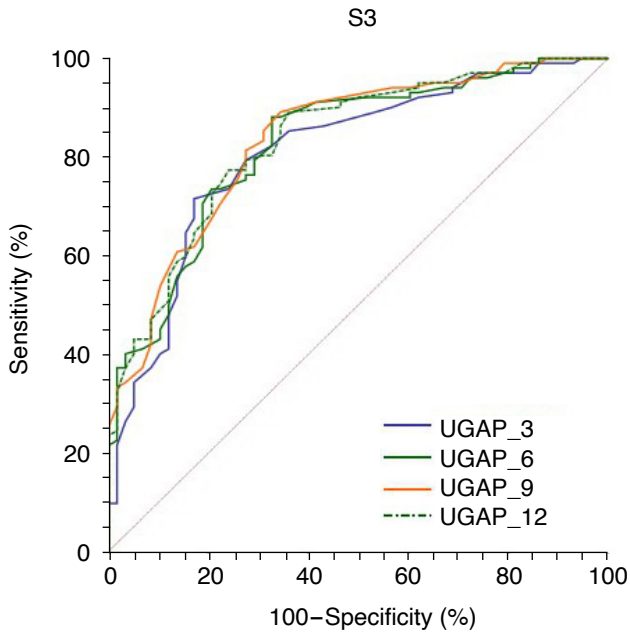


A



B



C

**Supplementary Fig. 1.** Comparison of receiver operating characteristic curves among UGAP\_3, UGAP\_6, UGAP\_9, and UGAP\_12 for diagnosing  $\geq S1$  (A),  $\geq S2$  (B), and S3 (C). UGAP, ultrasound-guided attenuation parameter; UGAP\_3, 3-repeated measurements obtaining 3 attenuation coefficients using UGAP; UGAP\_6, 6-repeated measurements obtaining 6 attenuation coefficients using UGAP; UGAP\_9, 9-repeated measurements obtaining 9 attenuation coefficients using UGAP; UGAP\_12, 12-repeated measurements obtaining 12 attenuation coefficients using UGAP.