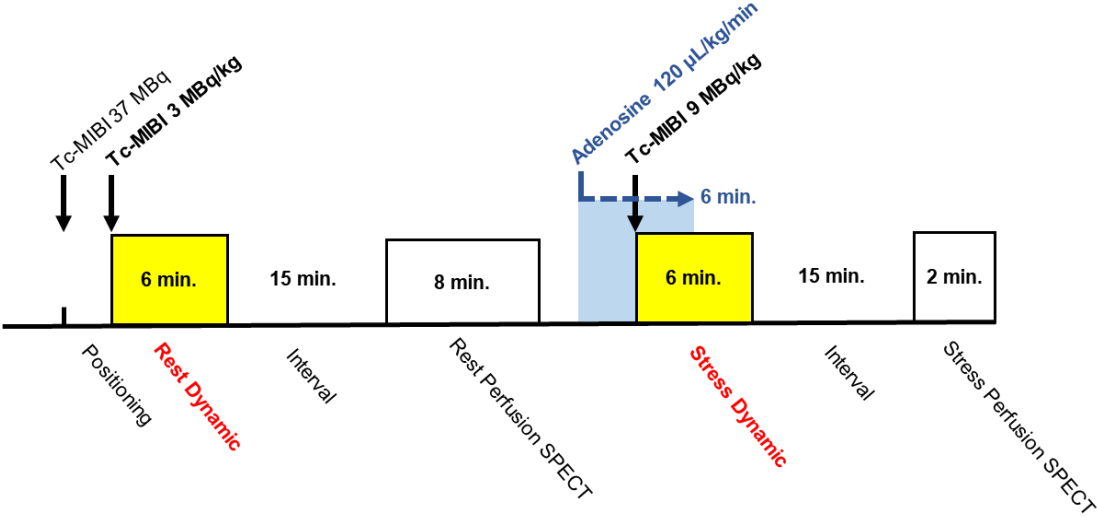


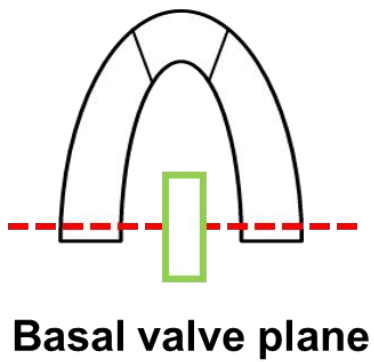
Supplement 1



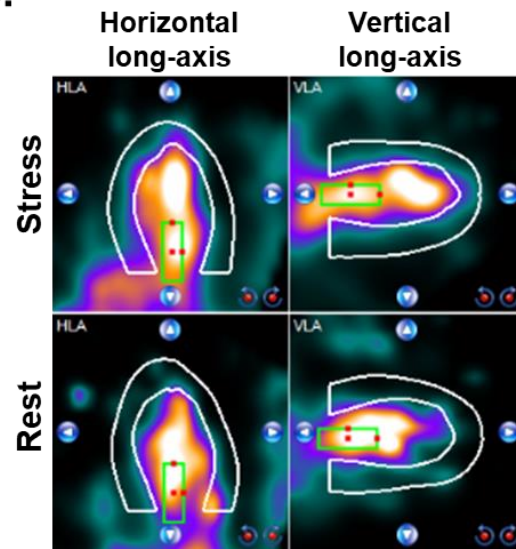
Supplement 1. Timeline of SPECT acquisition

Supplement 2

a.



b.



Supplement 2. Positioning of ROI in the blood pool

a. Schematic representation of the region of interest (ROI) (green box) in the blood pool. A 2 pixel-wide x 6 pixel-long ROI was positioned at the basal valve plane (within the LV and LA blood pool). b. Typical example of an ROI in a blood pool.