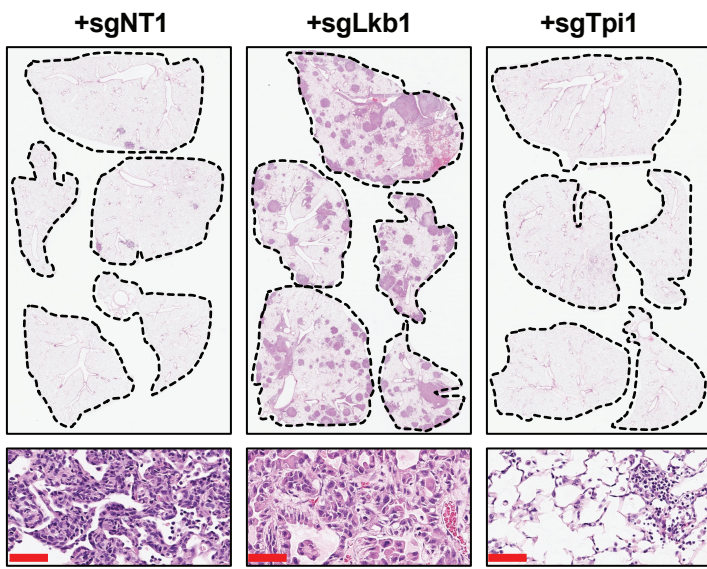
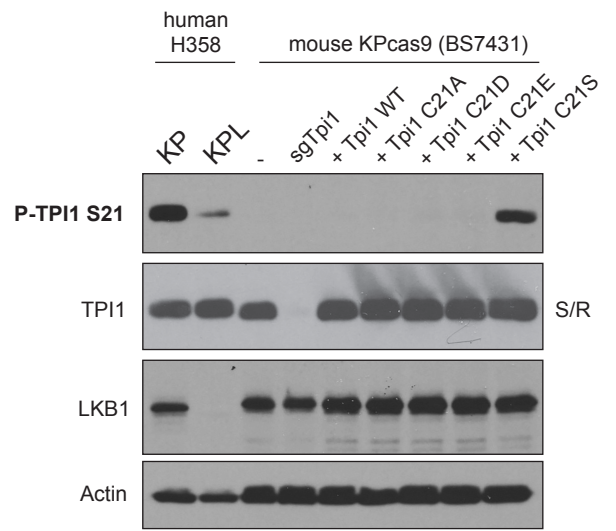
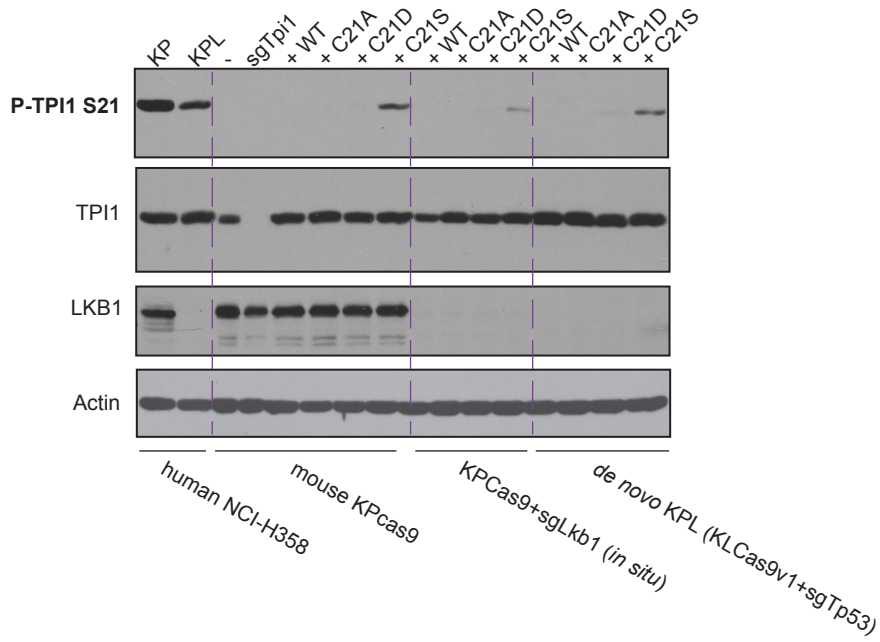
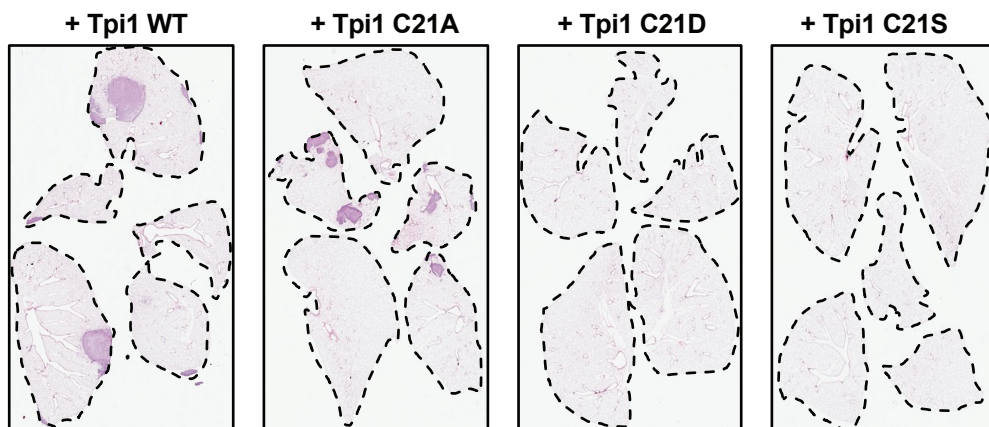


**A****B****C****D****Figure S7**

**Figure S7. Tpi1 is required for tumor growth in KP and KPL LUAD models.**

**(A)** Representative lung tumor burden in groups of mice 4 weeks following tail vein injection; histologic appearance of tumor lesions w/ inset 100  $\mu$ m scale bar (below). **(B)** Western blot analysis of human H358 (*KRAS*; *TP53*) isogenic KP and KPL cells (KP: sgNT1.6; KPL: sgLKB1-3.2) and derived untagged Tpi1 allelic panel in KPca9 (BS7431) tumor cell-line with phospho-specific antibody detection of Tpi1 C21S phosphorylation. **(C)** Western blot analysis of human H358 (*KRAS*; *TP53*) isogenic KP and KPL cells (KP: sgNT1.6; KPL: sgLKB1-3.2) and derived untagged Tpi1 allelic panels in BS7431, BS7431 + sgLkb1 in culture and *de novo* KPLcas9 tumor cell-lines. **(D)** Representative lung tumor burden in groups of mice 4 weeks following tail vein injection; histologic appearance of tumor lesions.