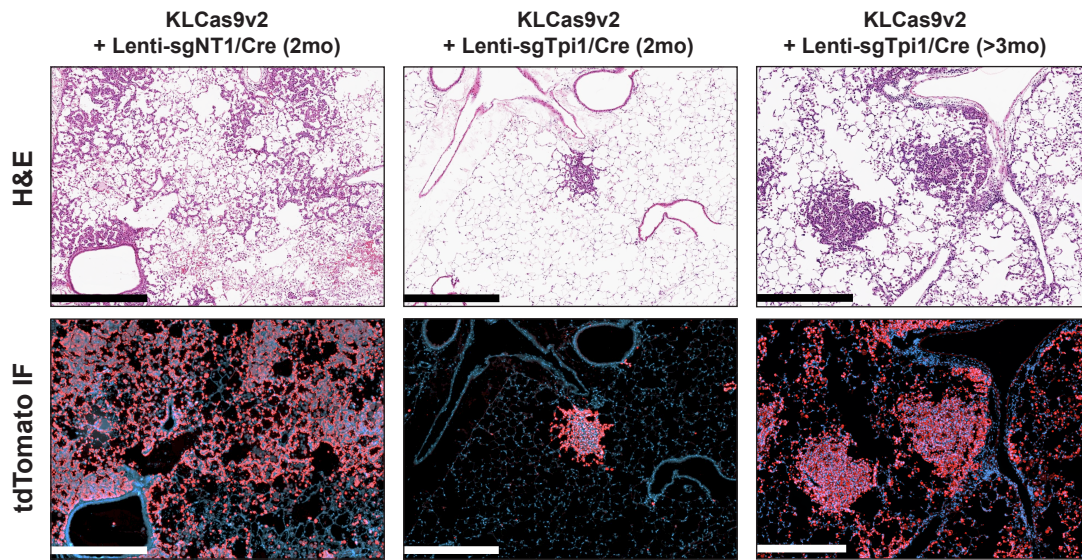
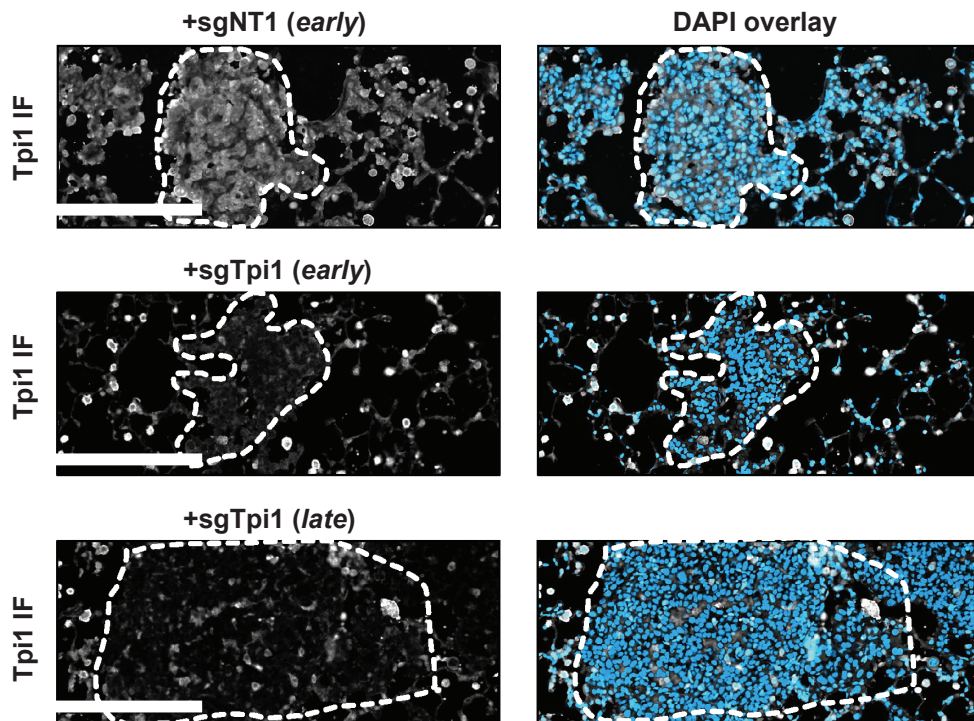


**A****B**

**Figure S8. Tpi1 inactivation in KL autochthonous tumor model alters histology and pathology.**

**(A)** Comparative H&E and tdTomato immunofluorescence from lung sections of KLCas9v2 mice intratracheally infected with equivalent titers of lentiviral-sgRNA/Cre constructs ( $\sim 10^5$  infectious particles per mouse). Lungs were collected 8 weeks (2mo) post-infection across three mice from both cohorts or and 14.5 weeks (>3mo) across 3 mice solely for sgTpi1 mice: scale bar  $\sim 500 \mu\text{m}$ . **(B)** Tpi1 immunofluorescence of individual lesions (highlighted by dashed lines) from groups of mice from 2mo matched time point (“early”) or upon the sgTpi1 cohort development of labored breathing (“late”  $\sim 3\text{mo}$  post-infection). Matched DAPI overlay with Tpi1 IF shown on right panel; scale bar  $\sim 100 \mu\text{m}$ .