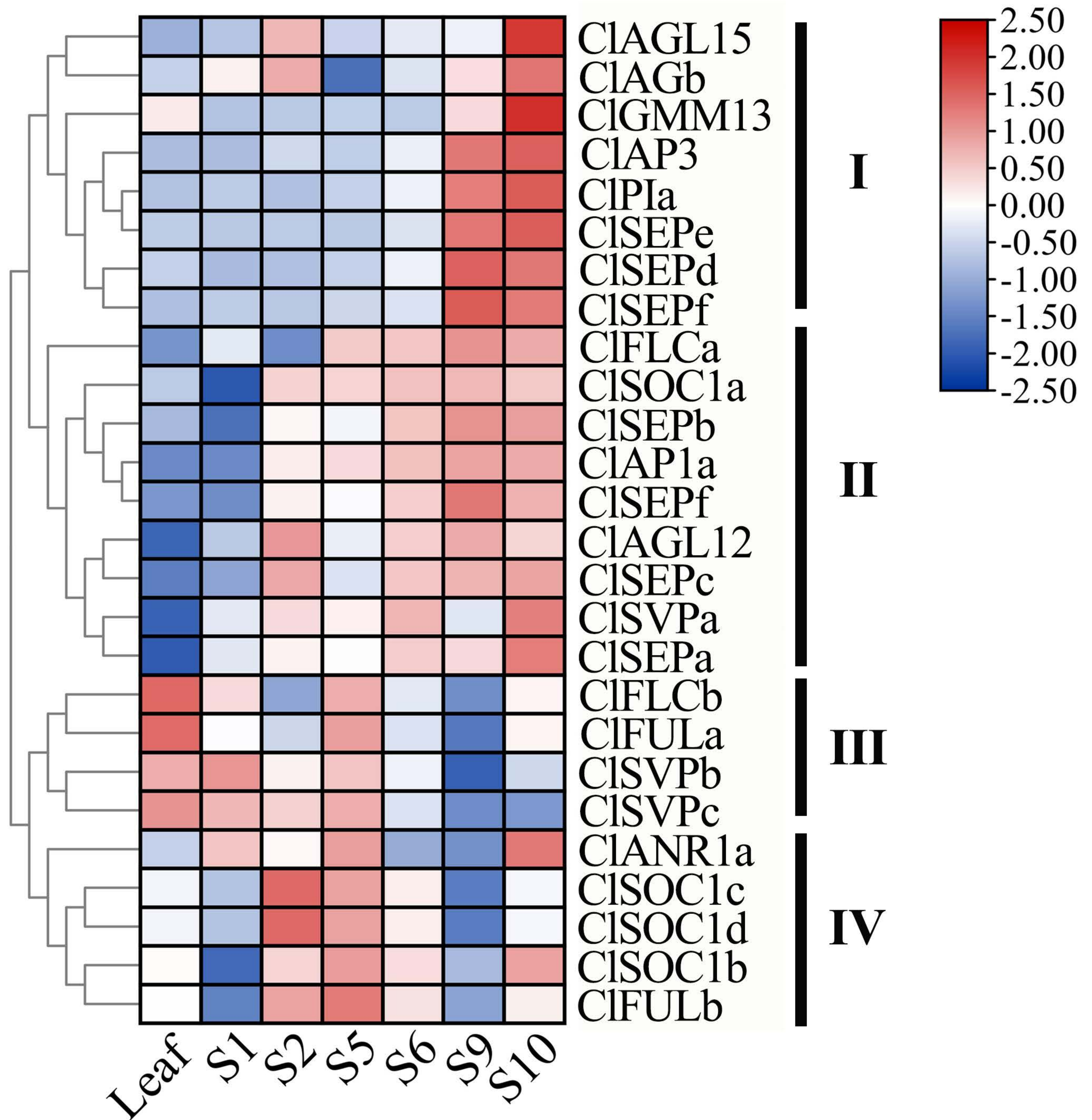


Supplementary Figure 1. Sequence logos of the *ClMIKc* and *AtMIKc* conserved motifs.

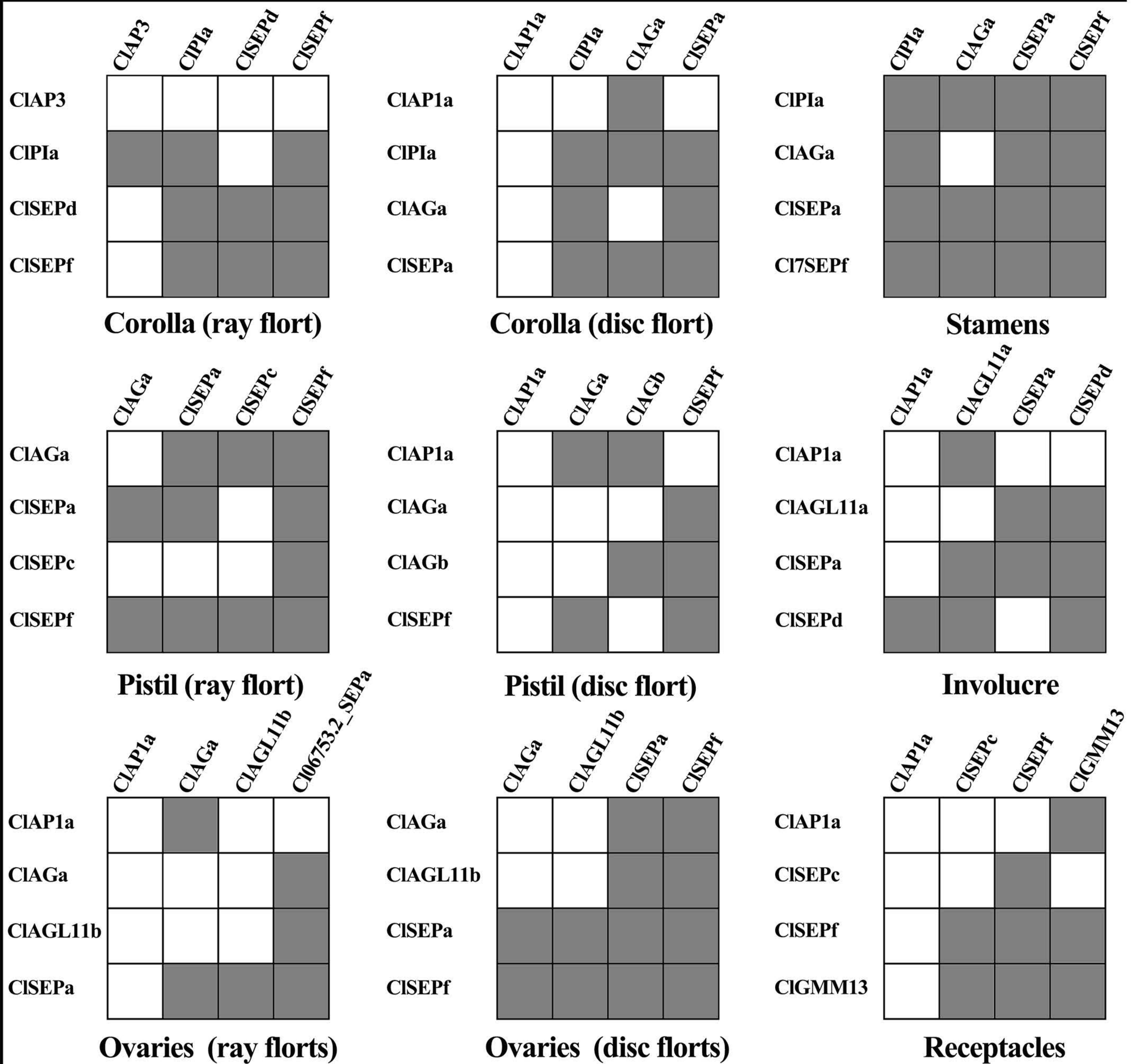


Supplementary Figure 2. Expression patterns of 26 *CLMIKc* in six periods of capitulum development and leaves

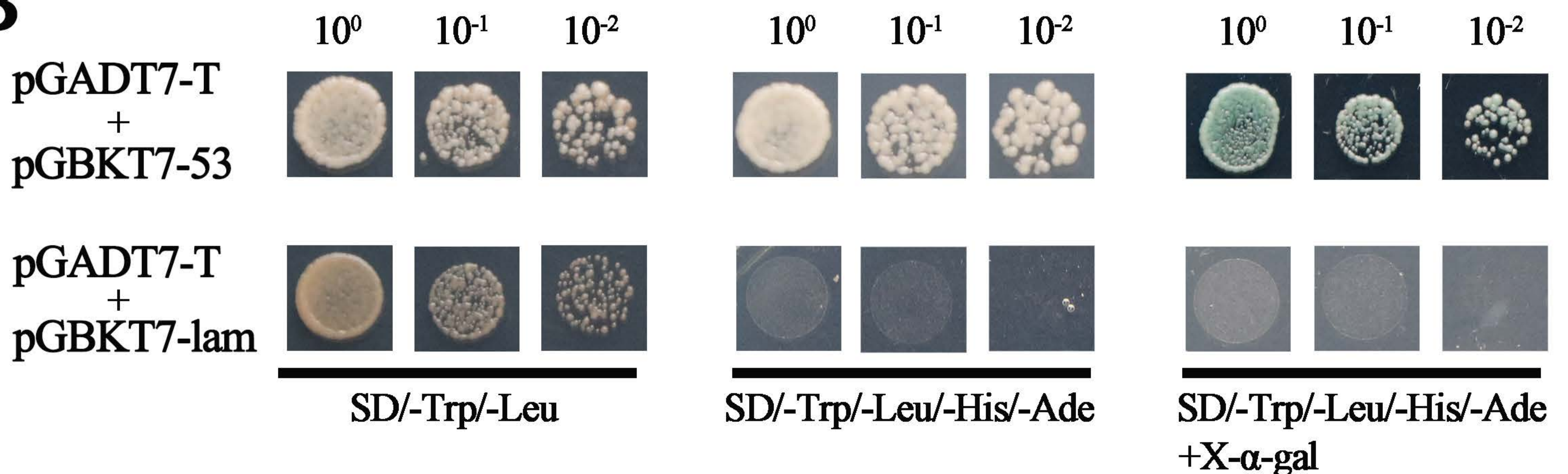
A

Bait Protein

Prey Protein



B

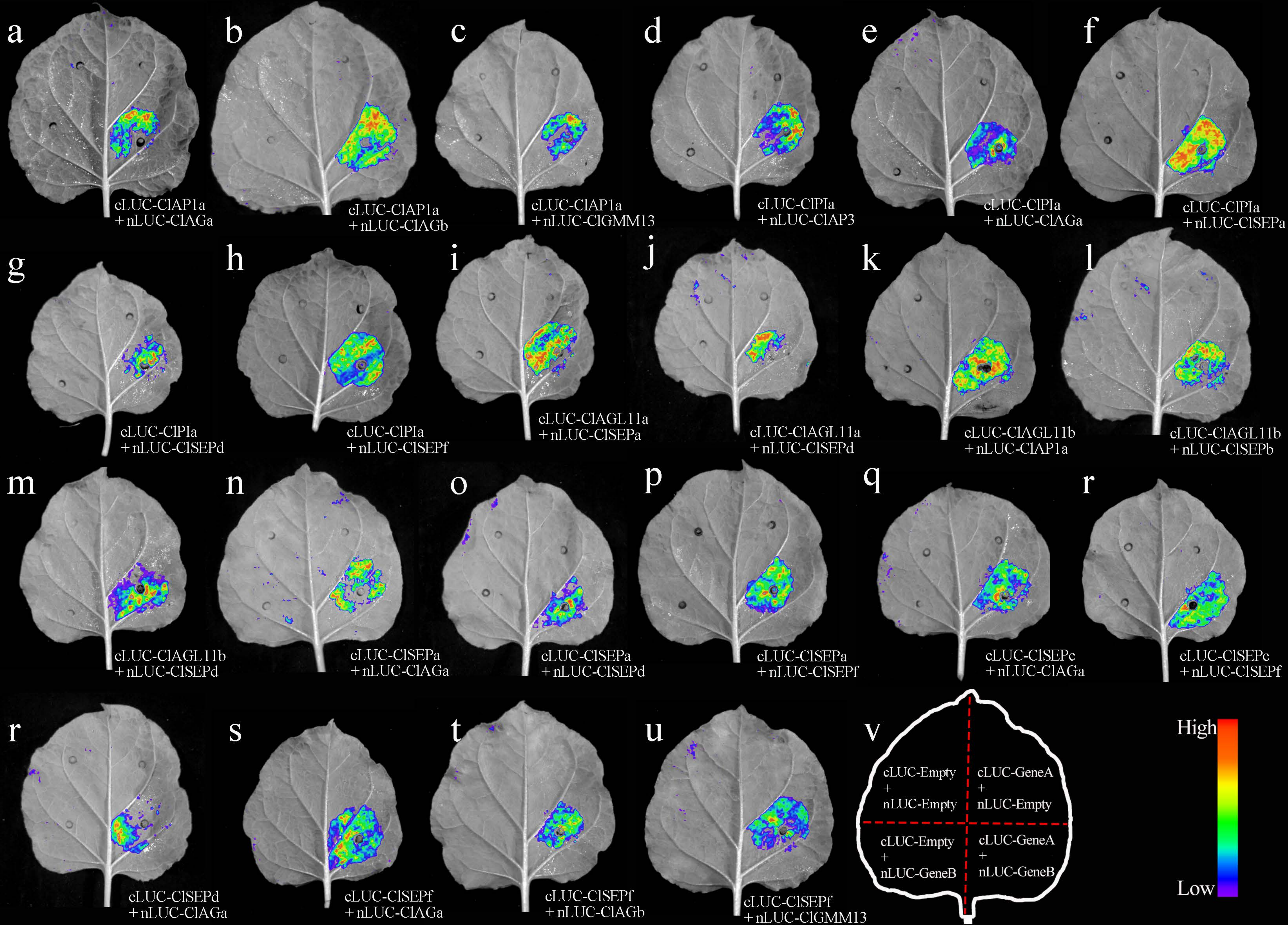


Supplementary Figure 3. Detection of ClMIKc interactions using the Y2H system.

A. Pairwise interactions of ClMIKc protein in nine floral organs.

The gray square indicates positive reciprocal interactions.

B. Positive (pGADT7+pGBKT7-53) and negative (pGADT7+GBKT7-lam) controls for Y2H assay.



Supplementary Figure 4. Validation of ClMIKc protein interactions using LCA in *N. benthamiana*.