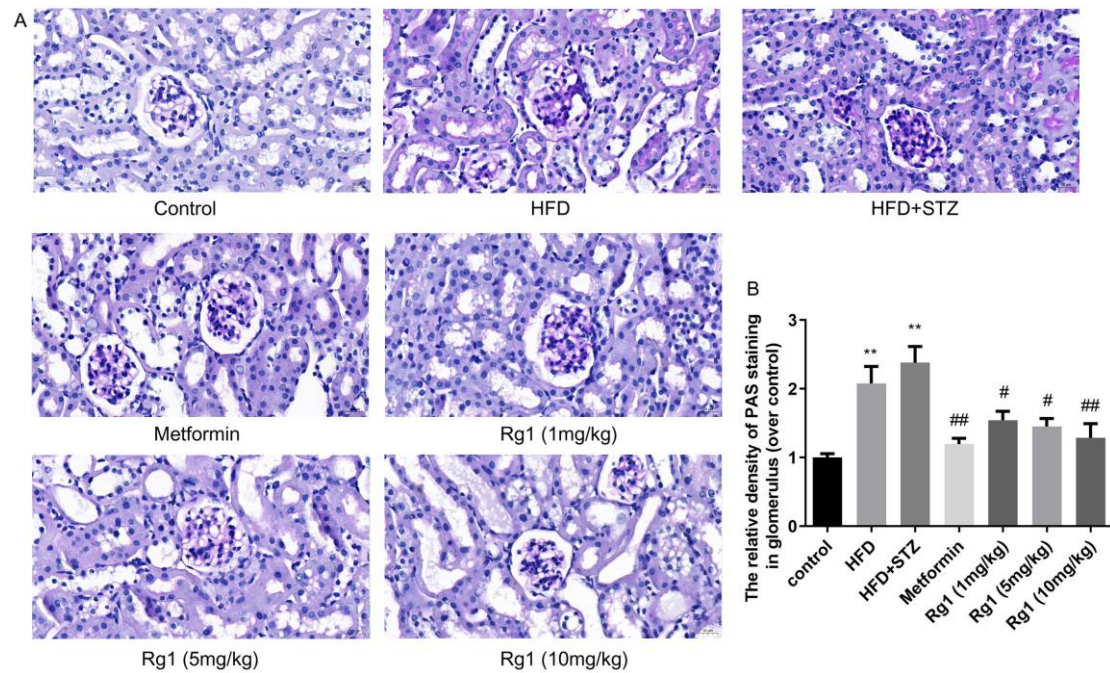


Supplemental Figure 1



Supplemental Figure 1 Effect of Rg1 treatment on the changes of PAS-positive area in T2DM mice.

(A) The result of PAS staining in the renal cortex (400 \times). (B) The relative density of PAS staining in the glomerulus. The data are expressed as the mean \pm SD, $n = 4$, ** $P < 0.01$ compared with the control group; # $P < 0.05$, ## $P < 0.01$ compared with the HFD+STZ group.