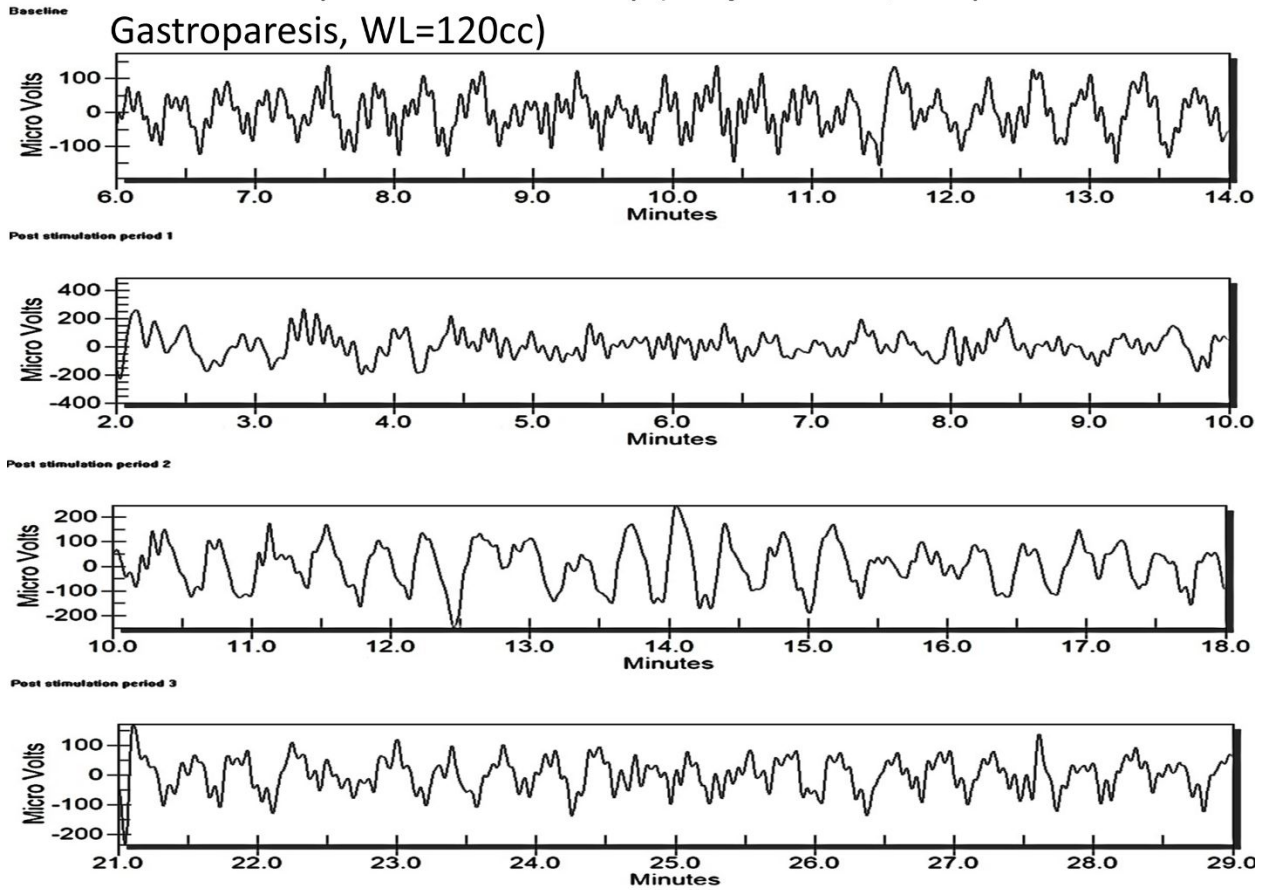
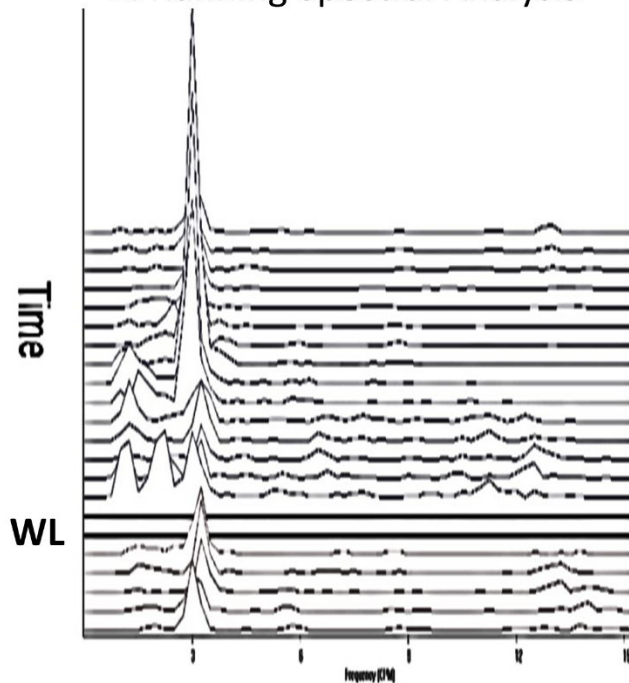


Appendix Figure 1

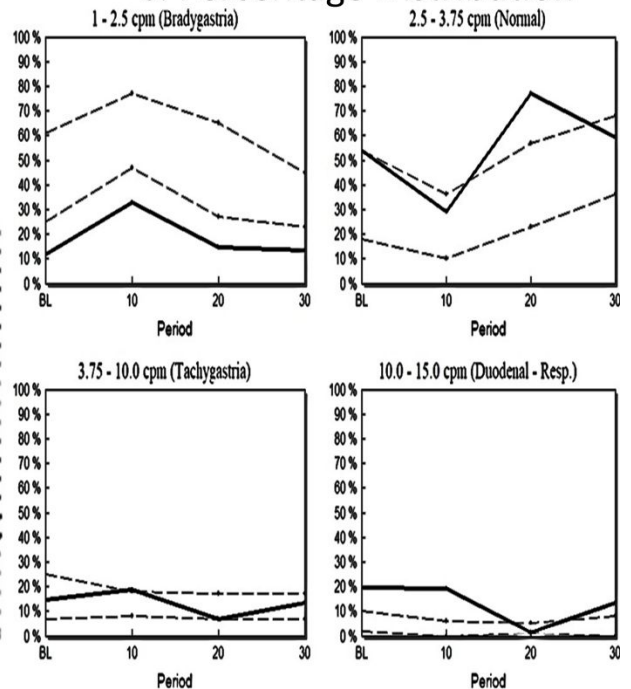
A. Gastric Myoelectrical Activity (Subject 1228, Idiopathic Gastroparesis, WL=120cc)



B. Running Spectral Analysis

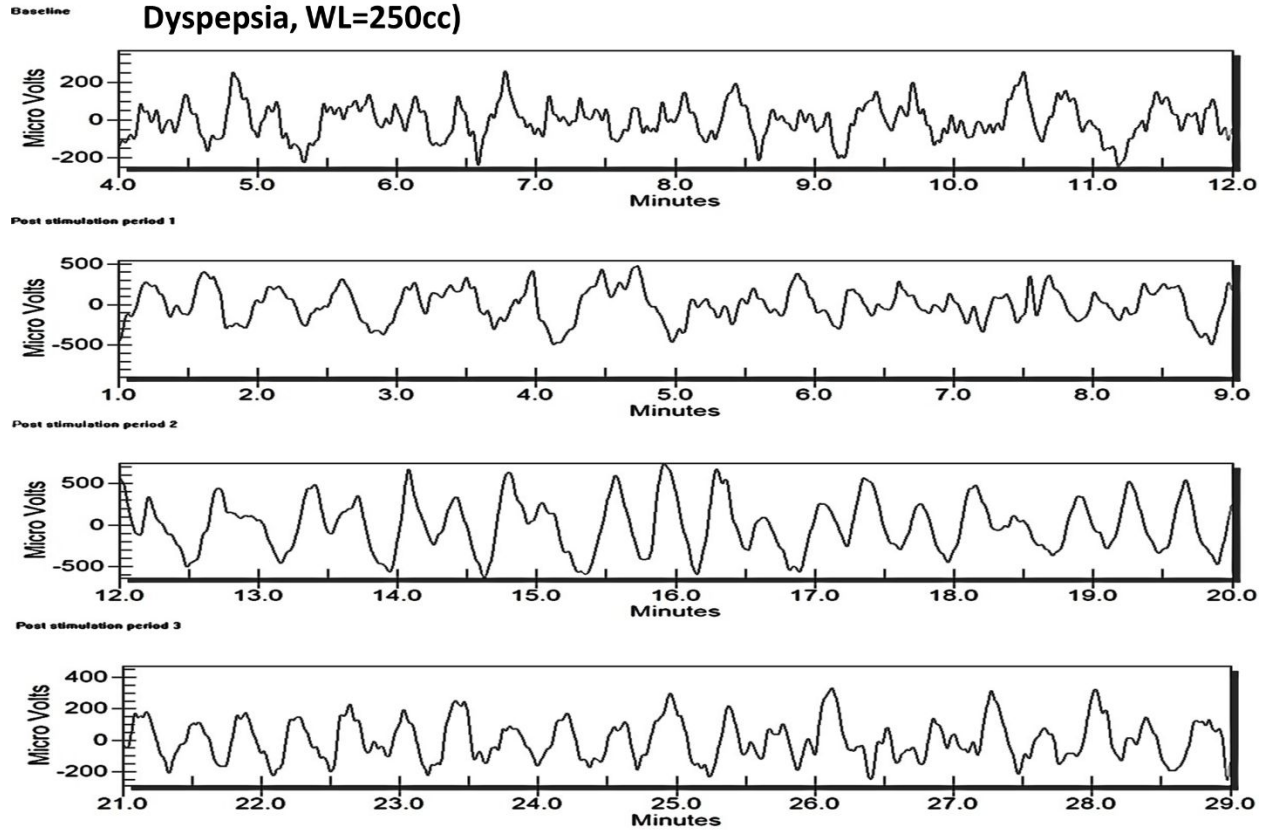


C. Percentage Distribution

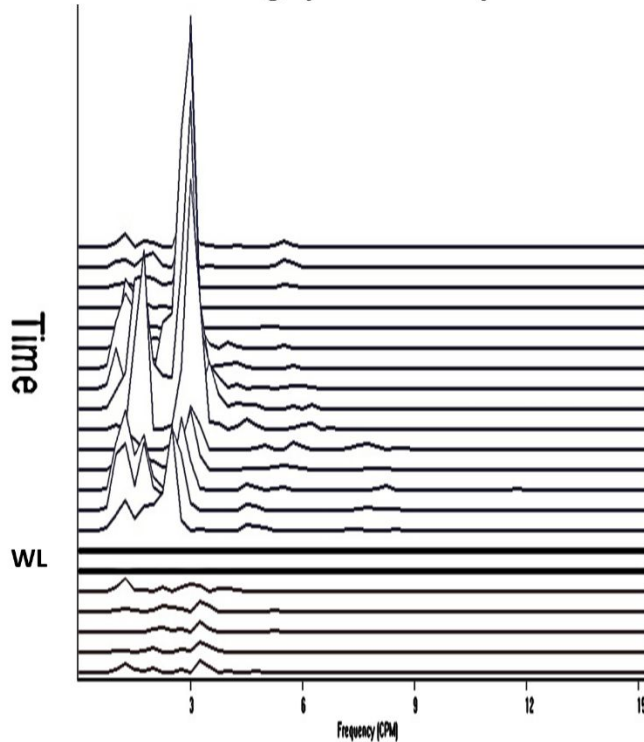


Appendix Figure 2.

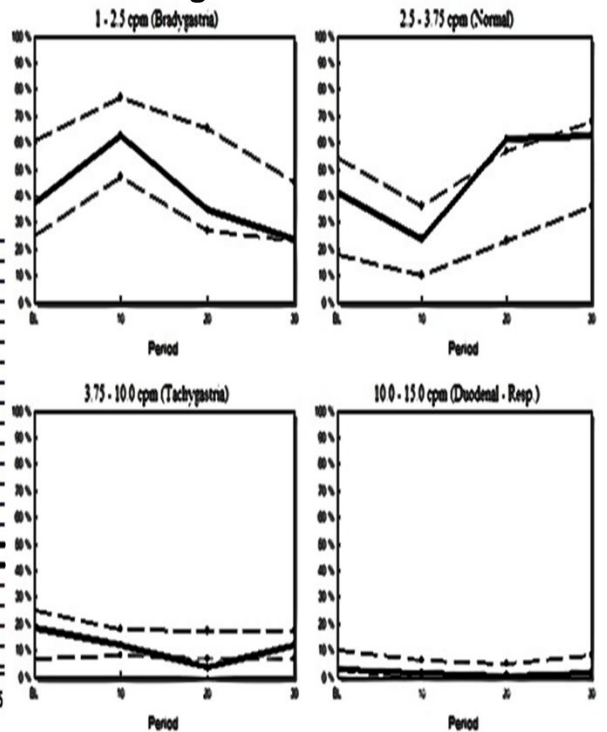
A. Gastric Myoelectrical Activity (Subject 4357, Functional Dyspepsia, WL=250cc)



B. Running Spectral Analysis

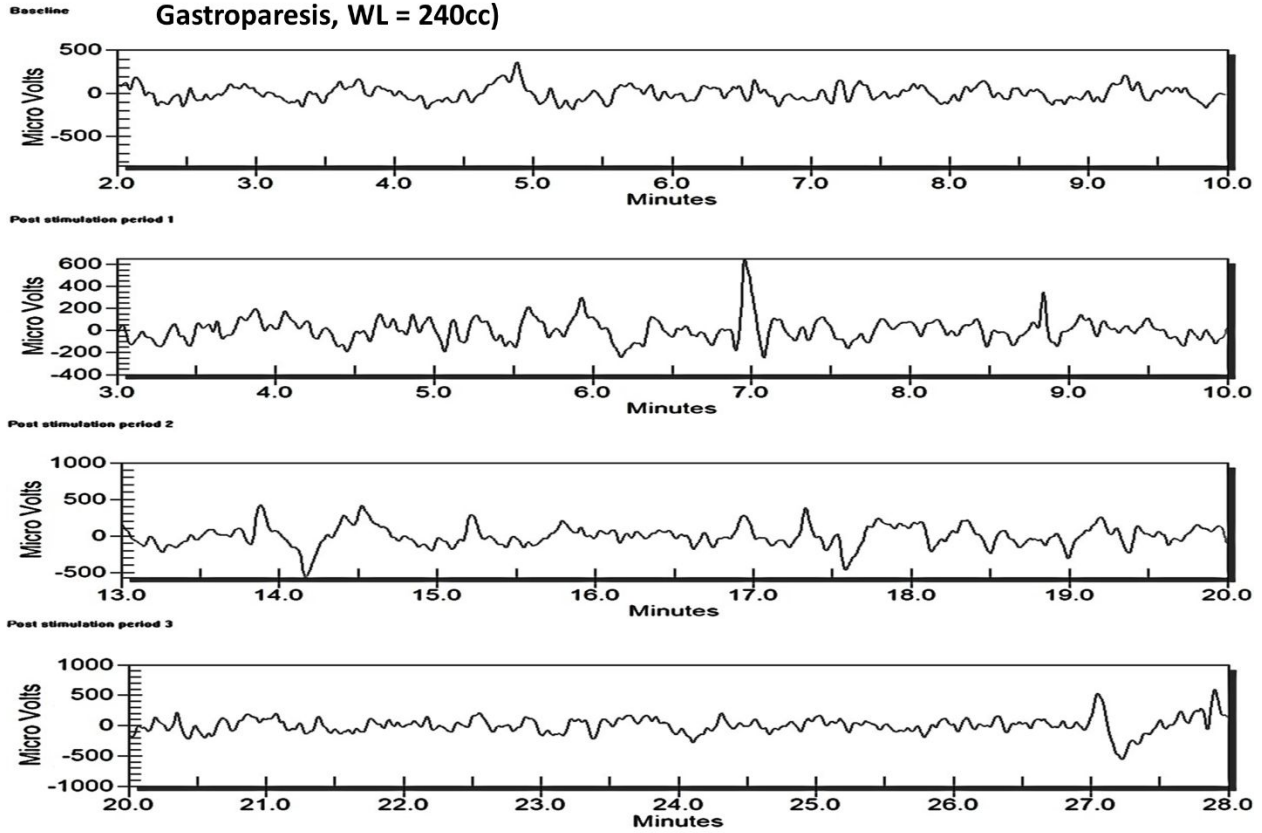


C. Percentage Distribution

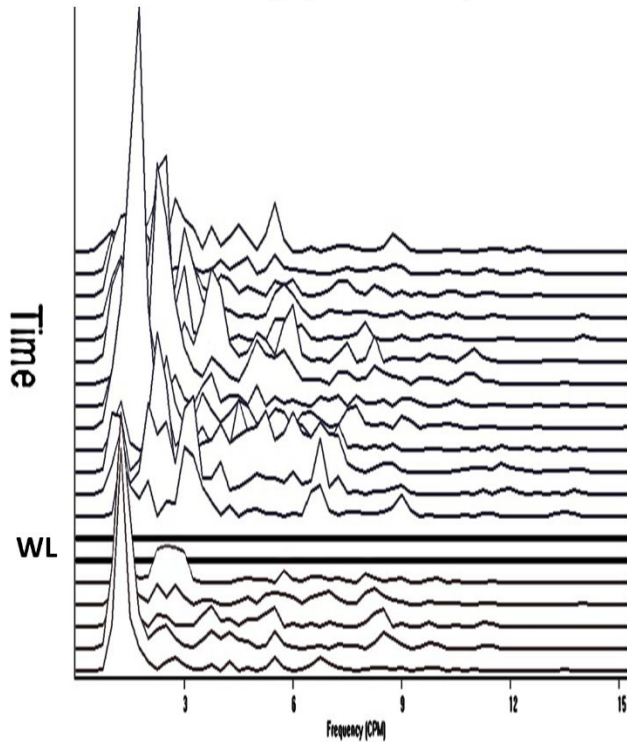


Appendix Figure 3

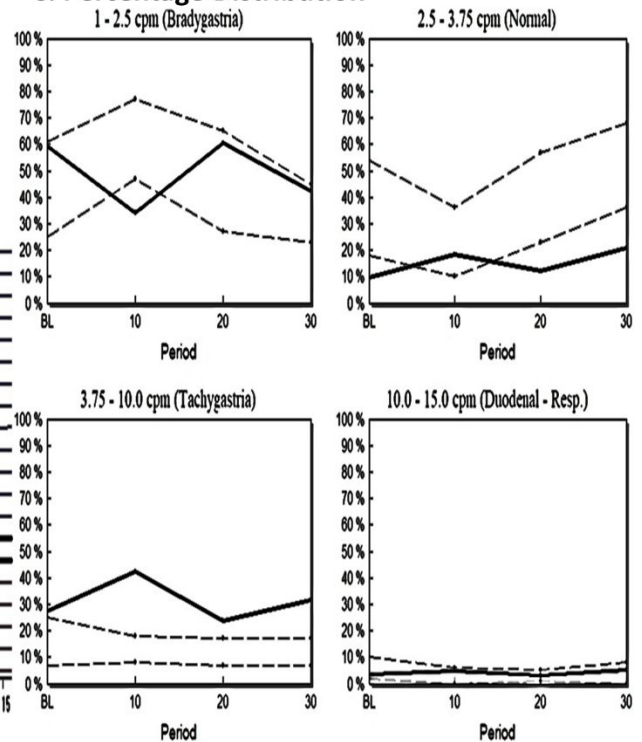
A. Gastric Myoelectrical Activity (Subject 5227, Idiopathic Gastroparesis, WL = 240cc)



B. Running Spectral Analysis

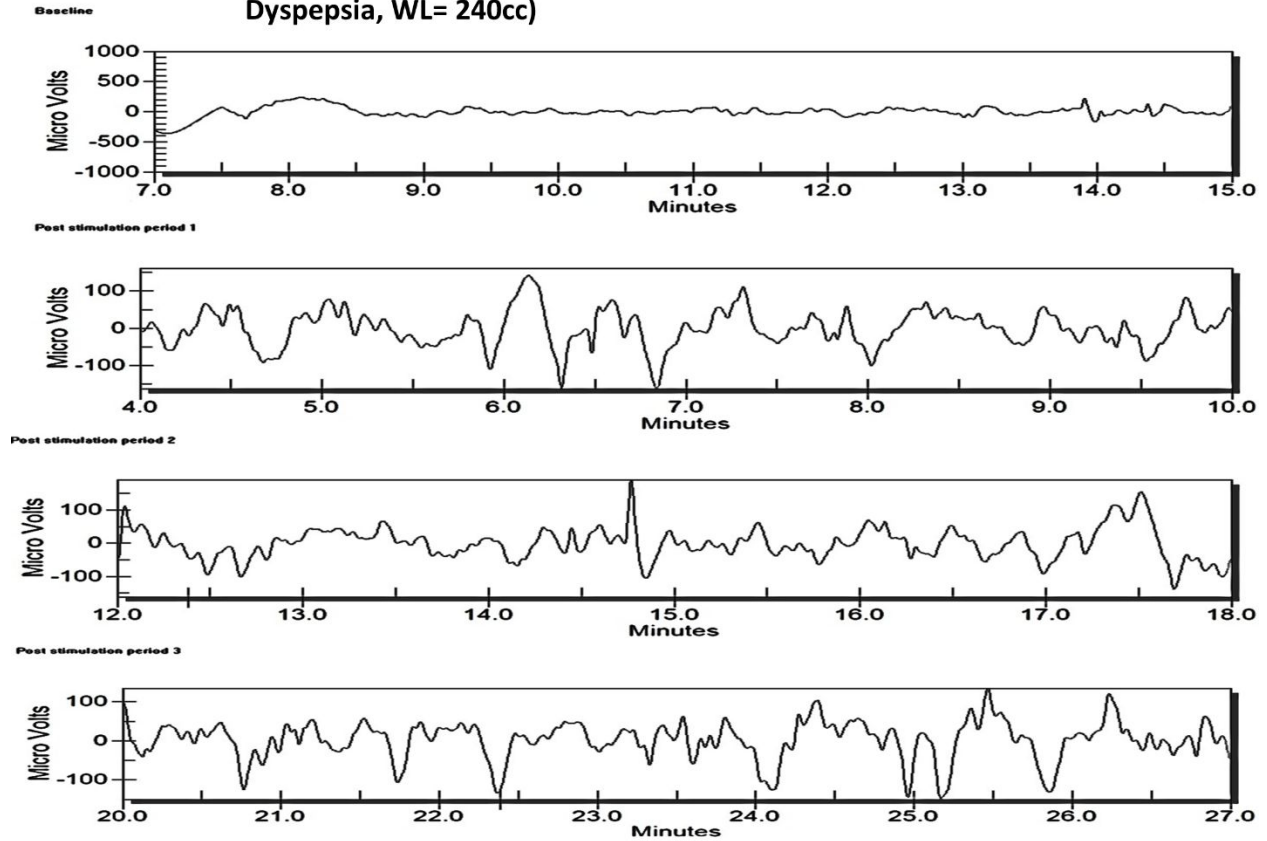


C. Percentage Distribution

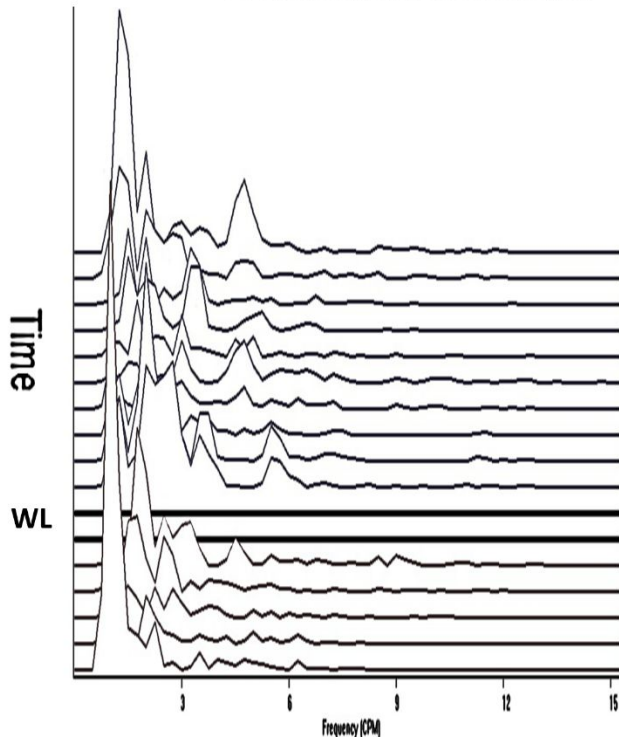


Appendix Figure 4.

A. Gastric Myoelectrical Activity (Subject 7056, Functional Dyspepsia, WL= 240cc)



B. Running Spectral Analysis



C. Percentage Distribution

