

Supplemental figures legends

Figure S1. Global phylogeny of CHIKV lineages. Maximum Likelihood (ML) phylogeny reconstructed using 1,987 CHIKV sequences, including the new genomes and others available on GenBank. New Brazilian genomes are indicated by blue branches in the Brazilian ECSA clade. Numbers are clade ultrafast bootstrap support values.

Figure S2. Ancestral locations of viruses from the CHIKV ECSA lineage circulating in Brazil. Maximum Clade Credibility tree reconstructed under a Bayesian phylogeography in discrete space using sequences (total n=471) from Brazil, Paraguay and Haiti. Location probabilities of clades I and II as well as of main early branches estimated to be originated in the Northeast of Brazil are represented by numbers placed near nodes. Location probabilities of other clades were omitted for clarity.

Figure S3. Transmission network of CHIKV in Brazil. The network was inferred from the transitions between geographic states from the Bayesian phylogeography under a discrete space model. Arrows indicate directionality and their thickness indicates transition frequencies. Node size was scaled by source hub ratio values estimated for each location. Colors are arbitrary.

Figure S1. Global phylogeny of CHIKV lineages

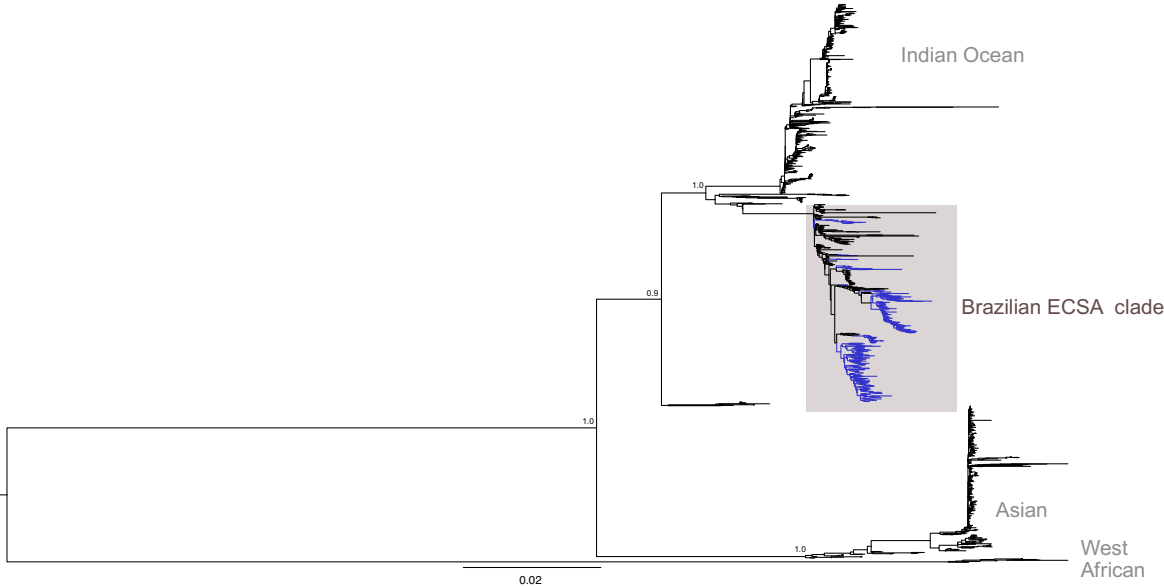


Figure S2. Ancestral locations of viruses from the CHIKV ECSA lineage circulating in Brazil.

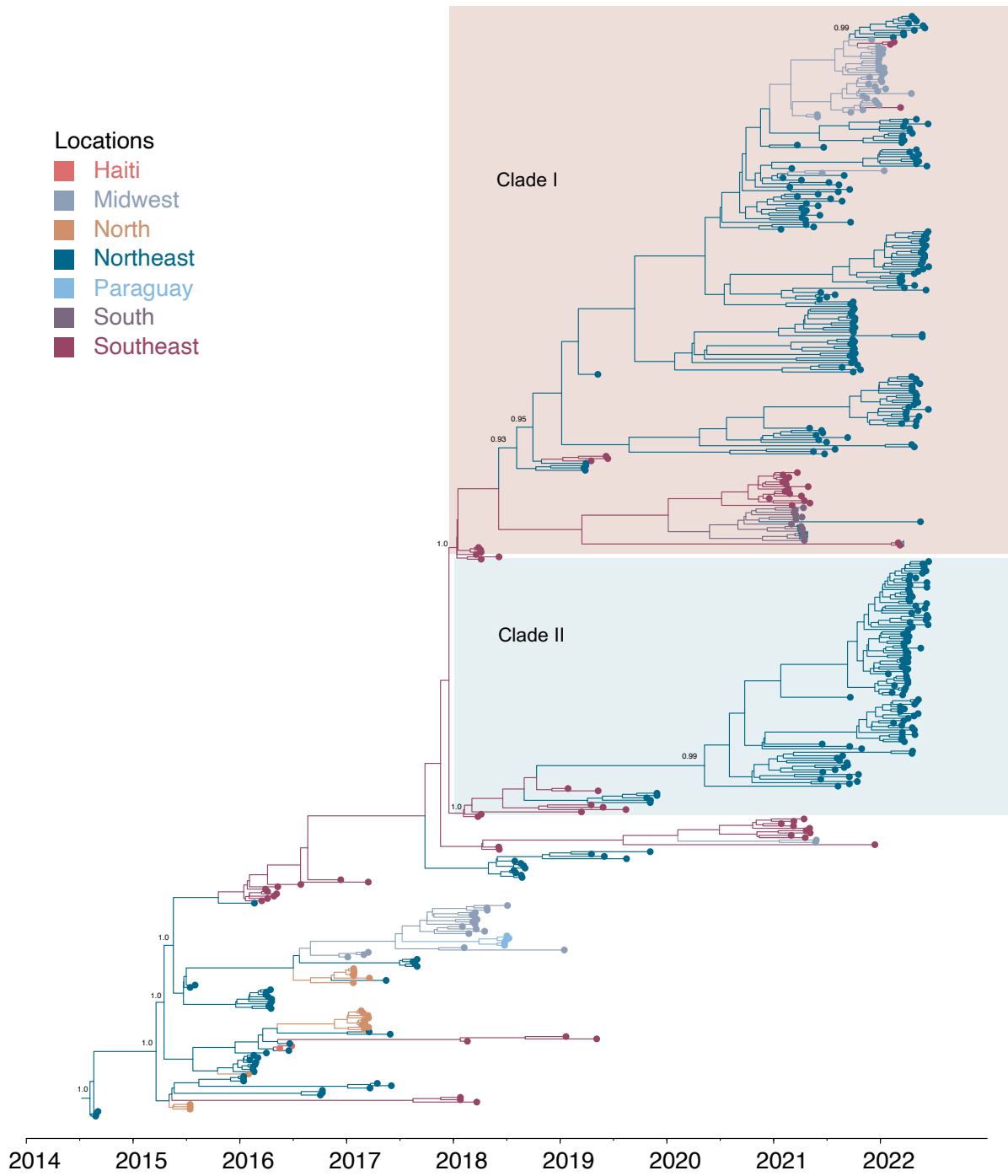


Figure S3. Transmission network of CHIKV in Brazil.

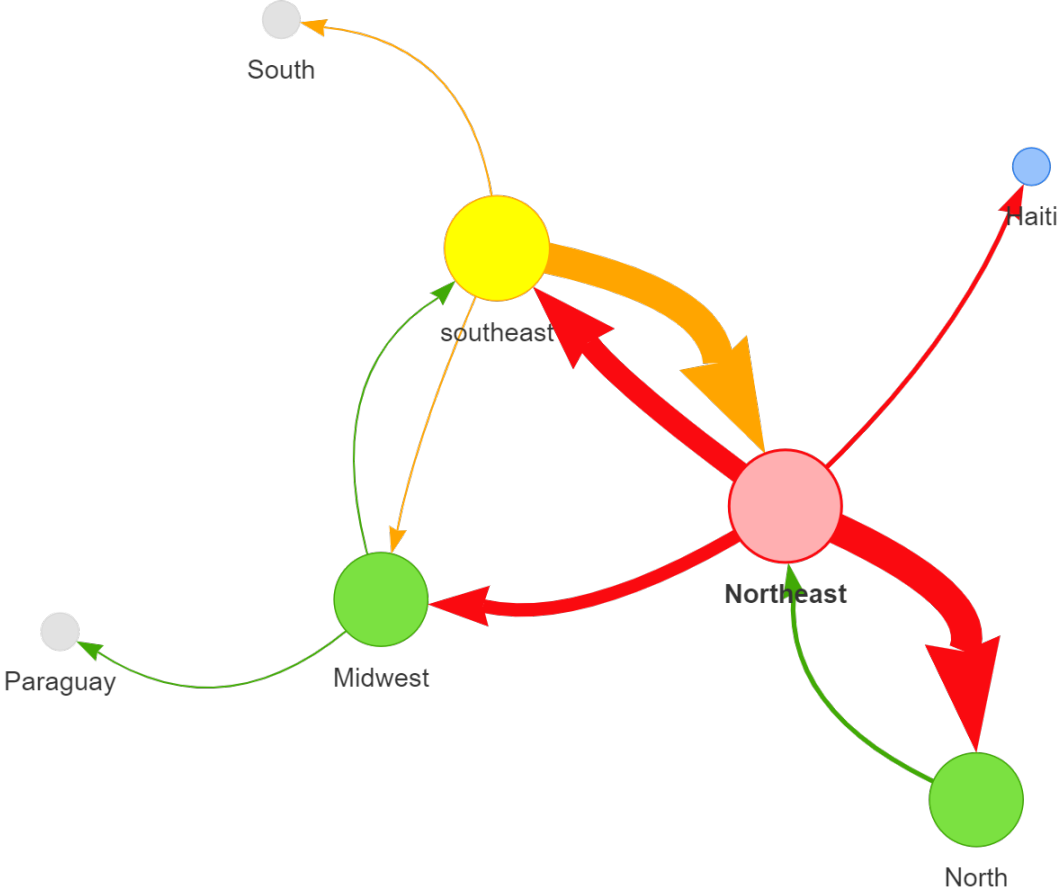


Table S1. Sample information and sequencing statistics.

ID-sequence	Barcode	Lab ID	Ct	State	Municipality	Collection date	Sex	Reads	Coverage	Depth of Coverage	Identity NT	Identity AA
CHIKV NB06 ARB02 AL 2021-08	NB06	ARB 2	21.92	AL	BARRA DE SAO MIGUEL	8-2021	M	8179.0	94.3	816.7	96.8	98.3
CHIKV NB07 ARB08 AL 2021-09	NB07	ARB 8	15.71	AL	DELMIRO GOUVEIA	9-2021	F	56805.0	94.1	3498.3	96.6	98.0
CHIKV NB08 ARB09 AL 2021-10	NB08	ARB 9	21.92	AL	UNIAO DOS PALMARES	10-2021	F	3038.0	92.9	226.8	96.8	98.3
CHIKV NB02 NIH-01 BA 2019-04	NB02	NIH-01/966	27.14	BA	FEIRA DE SANTANA	4-2019	M	132760.0	94.5	7528.6	96.6	98.1
CHIKV NB03 NIH-02 BA 2019-06	NB03	NIH-02/1435	26.52	BA	FEIRA DE SANTANA	6-2019	M	76168.0	94.6	5412.9	96.7	98.3
CHIKV NB04 NIH-03 BA 2019-05	NB04	NIH-03/1524	18.10	BA	FEIRA DE SANTANA	5-2019	F	2382.0	92.7	156.6	96.9	98.3
CHIKV NB05 NIH-04 BA 2019-08	NB05	NIH-04/1801	21.32	BA	FEIRA DE SANTANA	8-2019	M	88238.0	94.6	6633.4	96.6	98.3
CHIKV NB09 BA-01 2021-02	NB09	BA-01	14.80	BA	BARREIRAS	2-2021	M	28095.0	94.3	3298.8	96.8	98.3
CHIKV NB10 BA-02 2021-04	NB10	BA-02	15.10	BA	ITAGUACU DA BAHIA	4-2021	M	22200.0	94.8	2405.0	96.8	98.3
CHIKV NB11 BA-03 2021-06	NB11	BA-03	15.90	BA	FEIRA DE SANTANA	6-2021	M	48701.0	94.2	8877.8	96.8	98.3
CHIKV NB12 BA-04 2021-03	NB12	BA-04	18.30	BA	BARREIRAS	3-2021	F	72292.0	94.1	5770.4	96.8	98.2
CHIKV NB13 BA-05 2021-02	NB13	BA-05	18.80	BA	BARREIRAS	2-2021	F	46042.0	94.5	3880.8	96.7	98.3
CHIKV NB14 BA-06 2021-09	NB14	BA-06	19.10	BA	SAPEACU	9-2021	F	78195.0	94.5	6739.6	96.7	98.3
CHIKV NB15 BA-08 2021-03	NB15	BA-08	20.40	BA	BARREIRAS	3-2021	M	70997.0	94.5	6115.9	96.8	98.3
CHIKV NB16 BA-09 2021-04	NB16	BA-09	21.00	BA	BARREIRAS	4-2021	F	97995.0	94.4	6624.4	96.5	98.2
CHIKV NB17 BA-10 2021-04	NB17	BA-10	21.20	BA	BARREIRAS	4-2021	F	63373.0	94.2	4977.7	96.7	98.3
CHIKV NB18 BA-12 2021-04	NB18	BA-12	22.10	BA	IRECE	4-2021	M	38035.0	94.5	3366.7	96.6	98.2
CHIKV NB19 BA-15 2021-03	NB19	BA-15	22.80	BA	BARREIRAS	3-2021	M	68865.0	94.2	5050.5	96.8	98.3
CHIKV NB20 BA-18 2021-07	NB20	BA-18	23.50	BA	NOVO TRIUNFO	7-2021	F	26719.0	94.1	2002.1	96.7	98.3
CHIKV NB21 BA-19 2021-08	NB21	BA-19	23.50	BA	POJUCA	8-2021	F	59248.0	94.8	5119.6	96.7	98.2
CHIKV NB22 BA-21 2021-03	NB22	BA-21	23.60	BA	BARREIRAS	3-2021	F	47638.0	94.0	3735.6	96.7	98.2
CHIKV NB23 BA-22 2021-06	NB23	BA-22	24.20	BA	JACOBINA	6-2021	M	19873.0	94.4	1451.0	96.8	98.3
CHIKV NB24 BA-23 2021-06	NB24	BA-23	24.30	BA	DIAS D'AVILA	6-2021	F	123707.0	93.8	9189.9	96.7	98.2
CHIKV NB25 BA-24 2021-04	NB25	BA-24	24.50	BA	JOAO DOURADO	4-2021	F	71258.0	93.4	4504.9	96.7	98.2
CHIKV NB26 BA-25 2021-04	NB26	BA-25	24.60	BA	JUSSARA	4-2021	F	148156.0	95.0	8193.5	96.5	98.2
CHIKV NB27 BA-26 2021-07	NB27	BA-26	24.80	BA	POJUCA	7-2021	M	48203.0	94.0	3785.6	96.7	98.3
CHIKV NB28 BA-27 2021-06	NB28	BA-27	24.80	BA	POJUCA	6-2021	F	57357.0	93.9	3934.6	96.7	98.3
CHIKV NB29 BA-28 2021-04	NB29	BA-28	25.30	BA	PRESIDENTE DUTRA	4-2021	M	71019.0	94.1	5176.7	96.8	98.3
CHIKV NB30 BA-29 2021-01	NB30	BA-29	25.40	BA	CENTRAL	1-2021	F	66279.0	94.6	4807.5	96.7	98.2
CHIKV NB31 BA-30 2021-07	NB31	BA-30	25.50	BA	POJUCA	7-2021	M	105284.0	94.2	6852.0	96.7	98.3
CHIKV NB32 BA-31 2021-09	NB32	BA-31	26.10	BA	POJUCA	9-2021	F	92431.0	94.1	6306.1	96.7	98.2

CHIKV NB33 BA-32 2021-04	NB33	BA-32	26.40	BA	JOAO DOURADO	4-2021	M	115503.0	93.0	8249.5	96.6	98.1
CHIKV NB34 BA-33 2021-05	NB34	BA-33	26.60	BA	JUSSARA	5-2021	M	50837.0	94.0	3464.2	96.6	98.0
CHIKV NB35 BA-34 2021-06	NB35	BA-34	27.30	BA	CAFARNAUM	6-2021	F	16176.0	92.8	1076.4	96.8	98.2
CHIKV NB36 BA-35 2021-06	NB36	BA-35	28.70	BA	JACOBINA	6-2021	M	35263.0	94.1	2821.5	96.7	98.3
CHIKV BC57 GO057 2021-11	BC57	GO057	21.00	GO	APARECIDA DE GOIANIA	11-2021	F	66676.0	94.0	4996.5	96.8	98.2
CHIKV BC58 GO058 2022-01	BC58	GO058	19.00	GO	GOIANIA	1-2022	F	9390.0	94.4	847.3	96.7	98.3
CHIKV BC59 GO059 2021-12	BC59	GO059	28.00	GO	APARECIDA DE GOIANIA	12-2021	F	56752.0	94.3	3701.0	96.7	98.2
CHIKV BC60 GO060 2021-12	BC60	GO060	16.00	GO	TRINDADE	12-2021	F	8140.0	94.4	712.4	96.7	98.2
CHIKV BC61 GO061 2021-12	BC61	GO061	27.00	GO	CAMPOS BELOS	12-2021	M	87432.0	94.2	5213.7	96.7	98.1
CHIKV BC62 GO062 2021-12	BC62	GO062	19.00	GO	APARECIDA DE GOIANIA	12-2021	F	16831.0	94.3	1210.7	96.7	98.2
CHIKV BC63 GO063 2021-12	BC63	GO063	21.00	GO	GOIANIA	12-2021	M	116669.0	94.7	6980.6	96.6	98.1
CHIKV BC64 GO064 2021-12	BC64	GO064	25.00	GO	SENADOR CANEDO	12-2021	F	85084.0	94.5	5579.4	96.6	98.2
CHIKV BC65 GO065 2021-12	BC65	GO065	30.00	GO	LUZIANIA	12-2021	F	88300.0	94.4	5617.1	96.8	98.3
CHIKV BC66 GO066 2021-12	BC66	GO066	23.00	GO	LUZIANIA	12-2021	F	71421.0	94.5	4738.0	96.7	98.2
CHIKV BC67 GO067 2021-12	BC67	GO067	16.00	GO	LUZIANIA	12-2021	F	26270.0	94.0	2688.4	96.8	98.3
CHIKV BC68 GO068 2021-12	BC68	GO068	25.00	GO	LUZIANIA	12-2021	F	77257.0	94.2	5221.2	96.8	98.3
CHIKV BC69 GO069 2021-12	BC69	GO069	25.00	GO	LUZIANIA	12-2021	M	94412.0	94.4	6117.0	96.7	98.2
CHIKV BC70 GO070 2021-12	BC70	GO070	28.00	GO	LUZIANIA	12-2021	M	69718.0	94.8	3954.7	96.6	98.3
CHIKV BC71 GO071 2021-12	BC71	GO071	24.00	GO	LUZIANIA	12-2021	F	59435.0	94.4	4089.1	96.7	98.2
CHIKV BC72 GO072 2021-12	BC72	GO072	20.00	GO	VALPARAISO DE GOIAS	12-2021	F	7384.0	94.3	609.2	96.8	98.3
CHIKV BC73 GO073 2021-12	BC73	GO073	18.00	GO	LUZIANIA	12-2021	M	9418.0	93.8	842.8	96.8	98.3
CHIKV BC74 GO074 2021-12	BC74	GO074	22.00	GO	LUZIANIA	12-2021	F	75784.0	94.7	5741.0	96.6	98.2
CHIKV BC75 GO075 2021-12	BC75	GO075	26.00	GO	LUZIANIA	12-2021	M	31300.0	93.0	1737.9	96.7	98.1
CHIKV BC76 GO076 2022-01	BC76	GO076	18.00	GO	APARECIDA DE GOIANIA	1-2022	F	13157.0	94.4	1106.1	96.8	98.2
CHIKV BC77 GO077 2022-01	BC77	GO077	26.00	GO	LUZIANIA	1-2022	F	81286.0	94.1	5318.7	96.7	98.3
CHIKV BC78 GO078 2022-01	BC78	GO078	18.00	GO	LUZIANIA	1-2022	M	69981.0	94.5	6072.8	96.7	98.2
CHIKV BC79 GO079 2022-01	BC79	GO079	11.00	GO	APARECIDA DE GOIANIA	1-2022	F	3377.0	94.3	344.5	96.8	98.3
CHIKV BC80 GO080 2022-01	BC80	GO080	21.00	GO	LUZIANIA	1-2022	F	2989.0	94.7	233.5	96.6	98.1
CHIKV BC81 GO081 2022-01	BC81	GO081	25.00	GO	LUZIANIA	1-2022	F	91383.0	94.9	6165.5	96.5	98.2
CHIKV BC82 GO082 2022-01	BC82	GO082	17.00	GO	CAMPOS BELOS	1-2022	F	48503.0	94.5	4618.1	96.7	98.1
CHIKV BC83 GO083 2022-01	BC83	GO083	23.00	GO	GOIANIA	1-2022	F	116617.0	94.0	8253.4	96.8	98.2
CHIKV BC84 GO084 2022-01	BC84	GO084	25.00	GO	LUZIANIA	1-2022	M	91278.0	94.1	6363.5	96.7	98.3
CHIKV BC85 GO085 2021-05	BC85	GO085	21.00	GO	PEROLANDIA	5-2021	F	96788.0	94.6	6721.9	96.6	98.2

CHIKV BC86 GO086 2021-05	BC86	GO086	25.00	GO	PEROLANDIA	5-2021	M	109908.0	93.9	7608.2	96.8	98.3
CHIKV BC87 GO087 2021-05	BC87	GO087	26.00	GO	BOM JESUS DE GOIAS	5-2021	F	65882.0	94.5	4546.6	96.8	98.2
CHIKV BC88 GO088 2021-05	BC88	GO088	28.00	GO	BOM JESUS DE GOIAS	5-2021	F	19663.0	94.4	1358.4	96.7	98.2
CHIKV BC89 GO089 2021-06	BC89	GO089	18.00	GO	ANAPOLIS	6-2021	F	27680.0	94.1	2883.4	96.7	98.3
CHIKV BC90 GO090 2021-09	BC90	GO090	28.00	GO	APARECIDA DE GOIANIA	9-2021	F	70631.0	94.1	4804.8	96.7	98.2
CHIKV BC91 GO091 2021-11	BC91	GO091	21.00	GO	APARECIDA DE GOIANIA	11-2021	F	96503.0	94.3	6692.1	96.6	98.2
CHIKV BC92 GO092 2021-11	BC92	GO092	24.00	GO	APARECIDA DE GOIANIA	11-2021	M	84959.0	94.0	6206.1	96.7	98.3
CHIKV BC93 GO093 2021-11	BC93	GO093	24.00	GO	GOIANIA	11-2021	F	18253.0	94.2	1313.6	96.8	98.2
CHIKV BC94 GO094 2021-11	BC94	GO094	23.00	GO	GOIANIA	11-2021	M	79545.0	94.2	5825.6	96.8	98.2
CHIKV BC95 GO095 2022-01	BC95	GO095	22.00	GO	TRINDADE	1-2022	F	29295.0	94.3	1791.4	96.8	98.2
CHIKV BC96 GO096 2021-12	BC96	GO096	22.00	GO	GOIANIA	12-2021	M	725.0	93.9	58.1	96.8	98.3
CHIKV MA BC01 2022-06	BC01	-	22.00	MA	SAO LUIS	6-2022	F	15380	92.6	964.7	96.6	98.1
CHIKV MA BC02 2022-06	BC02	-	24.00	MA	SAO LUIS	6-2022	F	15713	88.8	1061.1	96.7	98
CHIKV MA BC03 2022-06	BC03	-	23.00	MA	SAO LUIS	6-2022	M	9121	90.9	590	96.8	98.2
CHIKV MA BC04 2022-06	BC04	-	26.00	MA	SAO LUIS	6-2022	F	17624	82.8	1306	96.7	98.1
CHIKV MA BC05 2022-05	BC05	-	24.00	MA	SAO LUIS	5-2022	M	16780	87.8	1125.5	96.8	98.1
CHIKV MA BC19 2022-06	BC19	-	22.00	MA	BACABAL	6-2022	F	24423	90.7	1658.1	96.7	98.3
CHIKV MA BC20 2022-06	BC20	-	22.00	MA	CAXIAS	6-2022	F	26619	87.8	1867.7	96.5	97.8
CHIKV MA BC21 2022-06	BC21	-	23.00	MA	CAXIAS	6-2022	M	18226	86.9	1172.8	96.5	97.8
CHIKV MA BC22 2022-06	BC22	-	25.00	MA	SAO LUIS	6-2022	F	16062	84.7	1134.6	96.7	98
CHIKV MA BC23 2022-05	BC23	-	24.00	MA	SAO LUIS	5-2022	M	18760	88.5	1365.7	96.7	98
CHIKV MA BC24 2022-05	BC24	-	24.00	MA	SAO LUIS	5-2022	F	9620	81.2	781.5	96.6	98.1
CHIKV MA BC25 2022-06	BC25	-	24.00	MA	SAO LUIS	6-2022	M	17308	87.4	1304.8	96.7	98.1
CHIKV MA BC26 2022-06	BC26	-	23.00	MA	SAO LUIS	6-2022	F	24030	93.2	1545.8	96.7	98.2
CHIKV MA BC40 2022-06	BC40	-	25.00	MA	SAO LUIS	6-2022	F	17687	85.6	1227.8	96.7	98.1
CHIKV MA BC41 2022-06	BC41	-	24.00	MA	SAO LUIS	6-2022	F	31300	87.6	1940.4	96.7	98.1
CHIKV MA BC42 2022-06	BC42	-	22.00	MA (SP)	CAJAMAR	6-2022	M	27099	86.5	1959.9	96.8	98.3
CHIKV MA BC43 2022-06	BC43	-	25.00	MA	SAO LUIS	6-2022	M	33729	85.3	2364.5	96.7	98.1
CHIKV MA BC44 2022-06	BC44	-	24.00	MA	SANTA INES	6-2022	F	18897	85.5	1250.6	96.5	98.1
CHIKV MA BC49 2022-05	BC49	-	22.00	MA	SAO LUIS	5-2022	F	17094	89.4	1078.1	96.7	98.1
CHIKV MA BC50 2022-05	BC50	-	21.00	MA	TIMON	5-2022	M	12600	91.5	821	96.8	98.2
CHIKV MA BC51 2022-06	BC51	-	24.00	MA	SAO LUIS	6-2022	M	11100	83	756.4	96.7	98.1
CHIKV MA BC52 2022-05	BC52	-	21.00	MA (MG)	SANTA JULIANA	5-2022	M	12248	90.2	822.3	96.6	98

CHIKV MA BC53 2022-05	BC53	-	24.00	MA	SAO LUIS	5-2022	M	20722	85.5	1336.9	96.5	97.9
CHIKV MA BC54 2022-05	BC54	-	27.00	MA	SAO LUIS	5-2022	M	9404	84.8	664.6	96.4	97.8
CHIKV MA BC55 2022-05	BC55	-	21.00	MA	SAO LUIS	5-2022	M	14551	92.6	944.8	96.8	98.3
CHIKV MA BC56 2022-05	BC56	-	24.00	MA	SAO LUIS	5-2022	F	13439	87.4	955.4	96.7	98
CHIKV MA BC57 2022-05	BC57	-	24.00	MA	SAO LUIS	5-2022	F	12884	86.8	862.1	96.8	98.1
CHIKV MA BC58 2022-05	BC58	-	26.00	MA (RR)	BOA VISTA	5-2022	F	16879	88.3	1117.1	96.5	98.1
CHIKV MA BC59 2022-05	BC59	-	23.00	MA (PA)	BELEM	5-2022	M	13390	87.3	885.8	96.7	98.1
CHIKV MA BC69 2022-05	BC69	-	23.00	MA	SAO LUIS	5-2022	M	13059	89.8	846.9	96.7	98.2
CHIKV MA BC70 2022-05	BC70	-	26.00	MA	SAO LUIS	5-2022	F	9868	85.1	664.1	96.7	98
CHIKV MA BC71 2022-05	BC71	-	25.00	MA	SAO LUIS	5-2022	F	13689	88	898.7	96.6	98
CHIKV MA BC72 2022-05	BC72	-	20.00	MA	SAO LUIS	5-2022	M	11537	92.6	766.9	96.8	98.2
CHIKV MA BC73 2022-05	BC73	-	20.00	MA	SAO LUIS	5-2022	F	15871	93.1	1042.7	96.8	98.3
CHIKV MA BC74 2022-05	BC74	-	27.00	MA	SAO LUIS	5-2022	F	17914	77.7	1472.4	96.6	97.9
CHIKV MA BC75 2022-05	BC75	-	25.00	MA	SAO LUIS	5-2022	M	18346	85.7	1212.6	96.6	97.9
CHIKV MA BC76 2022-05	BC76	-	23.00	MA	SAO LUIS	5-2022	F	31268	84.7	2207.1	96.5	97.9
CHIKV MA BC89 2022-05	BC89	-	20.00	MA	SAO LUIS	5-2022	M	22535	92.8	1488.8	96.7	98.1
CHIKV MS BC11 2022-04	BC11	-	18.00	MS	CAMPO GRANDE	4-2022	F	27643	94.1	1657	-	-
CHIKV MS BC12 2022-04	BC12	-	27.00	MS	CAMPO GRANDE	4-2022	M	48153	94.3	2699.4	-	-
CHIKV PB PB017 NBC17 2021-05	NBC17	PB017	27.00	PB	REMIGIO	5-2021	M	172377	94.2	9450.2	96.9	98.4
CHIKV PB PB018 NBC18 2021-06	NBC18	PB018	21.00	PB	CAPIM	6-2021	F	108135	94.1	6318	96.9	98.3
CHIKV PB PB019 NBC19 2021-07	NBC19	PB019	18.00	PB	JOAO PESSOA	7-2021	M	-1600	91.6	170	96.8	98.3
CHIKV PB PB020 NBC20 2021-06	NBC20	PB020	16.00	PB	JOAO PESSOA	6-2021	M	57899	94	4989.4	96.9	98.4
CHIKV PB PB021 NBC21 2021-06	NBC21	PB021	20.00	PB	JOAO PESSOA	6-2021	F	65560	94	4074.3	96.8	98.4
CHIKV PB PB022 NBC22 2021-05	NBC22	PB022	18.00	PB	JOAO PESSOA	5-2021	F	23352	93.9	1688.4	96.8	98.4
CHIKV PB PB023 NBC23 2021-06	NBC23	PB023	28.00	PB	JOAO PESSOA	6-2021	M	138786	94.1	7473.3	96.9	98.4
CHIKV PB PB024 NBC24 2021-06	NBC24	PB024	18.00	PB	SUME	6-2021	M	69942	94.3	5616.9	96.6	98.2
CHIKV PB PB025 NBC25 2021-05	NBC25	PB025	15.00	PB	CONDE	5-2021	F	53626	94.3	4135.1	96.8	98.3
CHIKV PB PB026 NBC26 2021-06	NBC26	PB026	20.00	PB	CAAPORA	6-2021	F	109771	94.5	6857.6	96.8	98.3
CHIKV PB PB027 NBC27 2021-06	NBC27	PB027	17.00	PB	JOAO PESSOA	6-2021	F	61673	94	4704	96.8	98.4
CHIKV PB PB028 NBC28 2021-07	NBC28	PB028	22.00	PB	LUCENA	7-2021	F	51416	94.3	3498.7	96.8	98.2
CHIKV PB PB029 NBC29 2021-08	NBC29	PB029	14.00	PB	JOAO PESSOA	8-2021	M	10559	93.8	911.9	96.8	98.3
CHIKV SP PB030 NBC30 2021-07	NBC30	PB030	23.00	PB (SP)	SAO PAULO	7-2021	M	93533	93.8	5672.5	96.8	98.4

CHIKV PB PB031 NBC31 2021-08	NBC31	PB031	25.00	PB	JOAO PESSOA	8-2021	M	87700	93.9	5246.2	96.7	98.3
CHIKV PB PB032 NBC32 2021-08	NBC32	PB032	18.00	PB	CONDE	8-2021	M	53784	93.9	3875.3	96.8	98.4
CHIKV PB PB033 NBC33 2021-08	NBC33	PB033	13.00	PB	ALAGOINHA	8-2021	M	-1300	91.6	160	96.8	98.2
CHIKV PB PB034 NBC34 2021-09	NBC34	PB034	22.00	PB	SANTA RITA	9-2021	M	95964	93.9	5833.5	96.7	98.4
CHIKV PB PB035 NBC35 2021-09	NBC35	PB035	18.00	PB	JOAO PESSOA	9-2021	M	22917	93.9	1625.7	96.8	98.4
CHIKV PB PB036 NBC36 2021-09	NBC36	PB036	18.00	PB	JOAO PESSOA	9-2021	F	39209	94.3	3157.3	96.8	98.2
CHIKV PB PB037 NBC37 2021-08	NBC37	PB037	20.00	PB	JOAO PESSOA	8-2021	F	54302	94.1	3620.1	96.9	98.3
CHIKV PB PB038 NBC38 2021-09	NBC38	PB038	18.00	PB	CAAPORA	9-2021	M	62611	94.2	4394	96.9	98.4
CHIKV PB PB039 NBC39 2021-10	NBC39	PB039	21.00	PB	ALAGOA GRANDE	10-2021	F	1361	93.7	89.9	97	98.4
CHIKV PE 5572 NBC01 2021-10	NBC01	5572	27.62	PE	BARREIROS	10-2021	F	-2000	89	200	96.7	98.1
CHIKV PE 5542 NBC02 2021-10	NBC02	5542	28.34	PE	IPOJUCA	10-2021	M	46980	94.2	3559.7	96.9	98.4
CHIKV PE 4240 NBC03 2021-08	NBC03	4240	27.45	PE	BARREIROS	8-2021	M	-1700	91.1	180	96.8	98.1
CHIKV PE 4258 NBC04 2021-08	NBC04	4258	24.87	PE	GOIANIA	8-2021	M	99774	93.9	6987.5	97	98.5
CHIKV PE 5439 NBC05 2021-10	NBC05	5439	27.87	PE	BARREIROS	10-2021	M	68108	93.8	4425.5	96.8	98.3
CHIKV PE 5462 NBC06 2021-10	NBC06	5462	25.05	PE	SOURE	10-2021	F	64105	94.3	5166.8	96.8	98.3
CHIKV PE 5464 NBC07 2021-10	NBC07	5464	22.08	PE	FERNANDO DE NORONHA	10-2021	F	18131	93.8	1739.8	96.8	98.3
CHIKV PE 5313 NBC08 2021-10	NBC08	5313	26.46	PE	VICENCIA	10-2021	M	53674	93.9	3387.5	96.9	98.4
CHIKV PE 5342 NBC09 2021-09	NBC09	5342	27.31	PE	CONDADO	9-2021	F	979	89.4	70.3	97.1	98.5
CHIKV PE 5348 NBC10 2021-09	NBC10	5348	24.32	PE	FERNANDO DE NORONHA	9-2021	M	16364	93.8	1306.4	96.9	98.4
CHIKV PE 5375 NBC11 2021-10	NBC11	5375	25.04	PE	AGUA PRETA	10-2021	F	50206	93.9	3518.3	96.7	98.2
CHIKV PE 5118 NBC12 2021-09	NBC12	5118	26.31	PE	PAULISTA	9-2021	F	-400	91.3	200	96.7	98.3
CHIKV PE 5126 NBC13 2021-09	NBC13	5126	26.31	PE	BARREIROS	9-2021	F	43294	94.9	3159.1	96.7	98.1
CHIKV PE 5127 NBC14 2021-09	NBC14	5127	26.50	PE	BARREIROS	9-2021	M	39295	93.8	2557.8	96.8	98.3
CHIKV PE 4641 NBC15 2021-08	NBC15	4641	25.11	PE	JABOATAO DOS GUARARAPES	8-2021	M	52875	94.1	3948.2	96.9	98.3
CHIKV PE 4664 NBC16 2021-08	NBC16	4664	23.02	PE	FEIRA NOVA	8-2021	F	38012	94.4	2653.8	96.8	98.2
CHIKV PI06 NBC06 2021-07	NB06	PI06	30.00	PI	TERESINA	7-2021	M	1779643	93.4	129706.9	96.6	98.1
CHIKV PI07 NBC07 2021-08	NB07	PI07	30.00	PI	TERESINA	8-2021	M	1681440	90.8	103651.5	96.7	98
CHIKV PI NB01 2022-02	NB01	-	25.00	PI	TERESINA	2-2022	F	12201	92.6	786.7	96.6	97.9
CHIKV PI NB02 2022-01	NB02	-	26.00	PI	TERESINA	1-2022	F	20517	94.5	1583.2	96.5	98.1
CHIKV PI NB03 2022-02	NB03	-	27.00	PI	TERESINA	2-2022	F	10368	94.6	718.5	96.6	98.2
CHIKV PI NB04 2022-02	NB04	-	28.00	PI	TERESINA	2-2022	F	16232	94	1110	96.6	98.2
CHIKV PI NB06 2022-03	NB06	-	26.00	PI	TERESINA	3-2022	M	19842	94.1	1492.3	96.6	98.1

CHIKV PI NB07 2022-03	NB07	-	29.00	PI	TERESINA	3-2022	M	10088	94.2	649.1	96.6	98.2
CHIKV PI NB08 2022-03	NB08	-	27.00	PI	TERESINA	3-2022	F	16292	94.3	1114.2	96.6	98.1
CHIKV PI NB09 2022-03	NB09	-	29.00	PI	TERESINA	3-2022	F	13176	94	1051.1	96.6	98.2
CHIKV PI NB10 2022-03	NB10	-	27.00	PI	TERESINA	3-2022	F	21506	94.8	1489.1	96.7	98.2
CHIKV PI NB11 2022-03	NB11	-	29.00	PI	TERESINA	3-2022	M	13639	94	1087	96.6	98.1
CHIKV PI NB12 2022-03	NB12	-	27.00	PI	TERESINA	3-2022	M	18907	94	1496.1	96.6	98.2
CHIKV PI NB13 2022-03	NB13	-	27.00	PI	TERESINA	3-2022	F	18498	95.3	1415.6	96.3	98
CHIKV PI NB14 2022-03	NB14	-	29.00	PI	TERESINA	3-2022	F	12553	93.8	894.8	96.6	98.2
CHIKV PI NB15 2022-03	NB15	-	28.00	PI	TERESINA	3-2022	F	10043	94.5	739.8	96.6	98.1
CHIKV PI NB16 2022-03	NB16	-	20.00	PI	TERESINA	3-2022	F	13719	78.4	805.1	95.7	96.9
CHIKV PI NB17 2022-03	NB17	-	29.00	PI	TERESINA	3-2022	F	15330	94.1	1093.2	96.6	98.2
CHIKV PI NB18 2022-03	NB18	-	27.00	PI	TERESINA	3-2022	M	12501	94.2	1060.9	96.6	98.1
CHIKV PI NB19 2022-03	NB19	-	30.00	PI	TERESINA	3-2022	F	19575	94.2	1472.8	96.7	98.2
CHIKV PI NB20 2022-03	NB20	-	30.00	PI	TERESINA	3-2022	F	21103	94.9	1559.4	96.5	97.9
CHIKV PI NB21 2022-03	NB21	-	29.00	PI	TERESINA	3-2022	F	22248	94.5	1511.5	96.5	98.1
CHIKV PI NB22 2022-03	NB22	-	28.00	PI	TERESINA	3-2022	M	18295	93.9	1365.1	96.8	98.3
CHIKV PI NB23 2022-03	NB23	-	28.00	PI	TERESINA	3-2022	M	5089	94.3	373.8	96.7	98.3
CHIKV PI NB24 2022-03	NB24	-	30.00	PI	TERESINA	3-2022	F	8309	93.6	552.9	96.4	98.1
CHIKV PI NB25 2022-03	NB25	-	28.00	PI	TERESINA	3-2022	F	9121	93.1	660.9	96.6	98.1
CHIKV PI NB26 2022-03	NB26	-	28.00	PI	TERESINA	3-2022	M	14851	94.9	1024.1	96.4	98.1
CHIKV PI NB27 2022-03	NB27	-	26.00	PI	UNIÃO	3-2022	F	15621	93.9	1065.4	96.6	98.1
CHIKV PI NB28 2022-03	NB28	-	28.00	PI	TERESINA	3-2022	F	7590	94	563.8	96.6	98.2
CHIKV PI NB29 2022-04	NB29	-	29.00	PI	TERESINA	4-2022	M	11405	94	835.2	96.6	98.2
CHIKV PI NB30 2022-04	NB30	-	28.00	PI	TERESINA	4-2022	F	16892	93.3	1133	96.6	98.2
CHIKV PI NB31 2022-04	NB31	-	28.00	PI	TERESINA	4-2022	M	12862	94.1	901.1	96.6	98.2
CHIKV PI NB32 2022-04	NB32	-	26.00	PI	TERESINA	4-2022	M	16092	94.1	1224.4	96.6	98.2
CHIKV PI NB33 2022-03	NB33	-	30.00	PI	TERESINA	3-2022	F	9678	93.3	690.7	96.6	98.1
CHIKV PI NB34 2022-04	NB34	-	29.00	PI	TERESINA	4-2022	F	5582	93.1	500.2	96.6	98.1
CHIKV PI NB35 2022-03	NB35	-	25.00	PI	TERESINA	3-2022	M	8226	92.5	622.7	96.7	98.2
CHIKV PI NB37 2022-03	NB37	-	27.00	PI	TERESINA	3-2022	F	7864	76.2	575.1	96.4	97.7
CHIKV PI NB38 2022-04	NB38	-	28.00	PI	TERESINA	4-2022	F	8909	94.3	623.9	96.6	98.1
CHIKV PI NB39 2022-03	NB39	-	29.00	PI	TERESINA	3-2022	F	6820	94.9	502.9	96.5	98
CHIKV PI NB40 2022-04	NB40	-	30.00	PI	TERESINA	4-2022	M	6015	94.3	390.1	96.6	98

CHIKV PI NB41 2022-04	NB41	-	24.00	PI	TERESINA	4-2022	F	5361	94.4	433.2	96.6	98.1
CHIKV PI NB42 2022-04	NB42	-	25.00	PI	TERESINA	4-2022	F	6416	94	542.3	96.6	98.1
CHIKV PI NB43 2022-04	NB43	-	29.00	PI	TERESINA	4-2022	M	9979	94.3	658.6	96.6	98.1
CHIKV PI NB44 2022-04	NB44	-	30.00	PI	TERESINA	4-2022	F	6639	94.2	420.7	96.6	98.2
CHIKV PI NB45 2022-04	NB45	-	26.00	PI	TERESINA	4-2022	M	10682	92.8	697.8	96.6	98.1
CHIKV PI NB46 2022-04	NB46	-	30.00	PI	TERESINA	4-2022	F	5700	94.4	418.9	96.6	98.1
CHIKV PI NB47 2022-04	NB47	-	28.00	PI	TERESINA	4-2022	F	6657	94	461.9	96.6	98.2
CHIKV PI NB48 2022-04	NB48	-	28.00	PI	TERESINA	4-2022	M	4820	93.7	343.9	96.5	98
CHIKV PI NB49 2022-04	NB49	-	27.00	PI	TERESINA	4-2022	M	18574	92.6	1357.4	96.6	98
CHIKV PI NB50 2022-04	NB50	-	28.00	PI	TERESINA	4-2022	F	15671	90.5	1070.6	96.6	98
CHIKV PI NB51 2022-04	NB51	-	30.00	PI	TERESINA	4-2022	M	14221	82.3	1047.3	96.4	97.7
CHIKV PI NB52 2022-04	NB52	-	28.00	PI	TERESINA	4-2022	F	26750	92.9	2036	96.6	98.2
CHIKV PI NB53 2022-04	NB53	-	30.00	PI	TERESINA	4-2022	F	25594	90.2	1726	96.5	98
CHIKV PI NB54 2022-04	NB54	-	27.00	PI	TERESINA	4-2022	F	15116	91.8	1156.6	96.3	97.7
CHIKV PI NB55 2022-04	NB55	-	28.00	PI	BOQUEIRAO DO PIAUI	4-2022	F	18117	91.6	1205.1	96.4	97.8
CHIKV PI NB56 2022-04	NB56	-	27.00	PI	TERESINA	4-2022	M	18117	91.6	1205.1	96.4	97.8
CHIKV PI NB57 2022-04	NB57	-	26.00	PI	TERESINA	4-2022	F	17821	92.3	1181.9	96.5	97.9
CHIKV PI NB58 2022-04	NB58	-	25.00	PI	TERESINA	4-2022	F	12749	91.9	990.4	96.2	97.7
CHIKV PI NB59 2022-04	NB59	-	28.00	PI	TERESINA	4-2022	M	24323	86.9	1725.7	96.5	97.8
CHIKV PI NB60 2022-04	NB60	-	28.00	PI	TERESINA	4-2022	M	20071	90.1	1482.3	96.5	97.8
CHIKV PI NB61 2022-04	NB61	-	30.00	PI	TERESINA	4-2022	M	22407	82.2	1565.9	96.4	97.5
CHIKV PI NB62 2022-04	NB62	-	28.00	PI	TERESINA	4-2022	M	21006	89.8	1422.3	96.4	97.6
CHIKV PI NB63 2022-04	NB63	-	30.00	PI	TERESINA	4-2022	F	15311	90.5	1148.7	96.6	98.1
CHIKV PI NB64 2022-04	NB64	-	26.00	PI	TERESINA	4-2022	F	16081	82.6	1143	96.2	97.7
CHIKV PI NB65 2022-04	NB65	-	27.00	PI	TERESINA	4-2022	M	18838	90.2	1335.7	96.3	97.7
CHIKV PI NB66 2022-04	NB66	-	29.00	PI	TERESINA	4-2022	M	13921	86.9	1080.3	96.5	97.9
CHIKV PI NB67 2022-04	NB67	-	29.00	PI	TERESINA	4-2022	F	14815	90.6	1035.5	96.6	98
CHIKV PI NB68 2022-04	NB68	-	25.00	PI	TERESINA	4-2022	F	16313	92.8	1283.9	96.6	98
CHIKV PI NB69 2022-04	NB69	-	26.00	PI	AGRICOLANDIA	4-2022	M	12919	85.2	995.4	96.4	97.9
CHIKV PI NB70 2022-04	NB70	-	30.00	PI	TERESINA	4-2022	F	22456	88.9	1575.6	96.6	97.8
CHIKV PI NB71 2022-04	NB71	-	25.00	PI	TERESINA	4-2022	M	16212	90.3	1247.5	96.5	97.9
CHIKV PI NB72 2022-04	NB72	-	27.00	PI	TERESINA	4-2022	F	21832	90.6	1214.2	96.6	98
CHIKV PI NB73 2022-05	NB73	-	26.00	PI	TERESINA	5-2022	F	19482	92.2	1284	96.6	98.1

CHIKV PI NB74 2022-04	NB74	-	25.00	PI	TERESINA	4-2022	F	31171	86.5	2249.6	96.4	97.7
CHIKV PI NB75 2022-05	NB75	-	28.00	PI	TERESINA	5-2022	F	24562	85.3	1733.9	96.4	97.6
CHIKV PI NB76 2022-04	NB76	-	28.00	PI	TERESINA	4-2022	M	29219	89.5	2059.5	96.6	98.1
CHIKV PI NB77 2022-05	NB77	-	29.00	PI	TERESINA	5-2022	F	18968	84.3	1381.1	96.7	98.1
CHIKV PI NB78 2022-05	NB78	-	30.00	PI	TERESINA	5-2022	F	32919	90.2	2260.1	96.8	98.1
CHIKV PI NB79 2022-05	NB79	-	16.00	PI	TERESINA	5-2022	M	4406	94.2	558.5	96.6	98.2
CHIKV PI NB80 2022-05	NB80	-	27.00	PI	TERESINA	5-2022	M	22919	91.7	1810.6	96.6	98
CHIKV PI NB81 2022-06	NB81	-	25.00	PI	PARNAIBA	6-2022	M	23277	89.3	1415.7	96.6	98
CHIKV PI NB82 2022-06	NB82	-	28.00	PI	ALVORADA DO GURGUEIA	6-2022	F	26009	95.2	2044.5	96.5	98
CHIKV PI NB84 2022-06	NB84	-	28.00	PI (RIO GRANDE DO SUL)	ELDORADO DO SUL	6-2022	F	27053	88.1	1814.4	96.5	98
CHIKV PI NB85 2022-06	NB85	-	28.00	PI	TERESINA	6-2022	F	24702	86	1847.9	96.4	97.7
CHIKV PI NB86 2022-06	NB86	-	23.00	PI	TERESINA	6-2022	M	17699	92.9	1273.1	96.4	97.9
CHIKV PI NB87 2022-06	NB87	-	28.00	PI	DEMerval LOBÃO	6-2022	F	17376	86.6	1222	96.4	97.8
CHIKV PI NB88 2022-06	NB88	-	28.00	PI	TERESINA	6-2022	F	17382	86.3	1363.8	96.4	97.7
CHIKV PI NB89 2022-06	NB89	-	30.00	PI	TERESINA	6-2022	F	34966	85.7	2286.7	96.5	97.8
CHIKV PI NB90 2022-06	NB90	-	28.00	PI	TERESINA	6-2022	M	46180	85	2683.8	96.3	97.5
CHIKV PI NB91 2022-06	NB91	-	26.00	PI	TERESINA	6-2022	F	26429	91.9	2069.9	96.6	98.1
CHIKV NBC01 PR199_2096-21 2021-04	BC1	2096/21	32.00	PR	APUCARANA	4-2021	M	151883	61.1	11994.1	-	-
CHIKV NBC02 PR200_2221-21 2021-04	BC2	2221/21	28.00	PR	APUCARANA	4-2021	M	160235	69.1	39235.6	-	-
CHIKV NBC03 PR201_2250-21 2021-04	BC3	2250/21	25.00	PR	APUCARANA	4-2021	F	167809	63	16195.3	-	-
CHIKV NBC04 PR203_2254-21 2021-04	BC4	2254/21	28.00	PR	APUCARANA	4-2021	M	237806	66.5	18348.6	-	-
CHIKV NBC12 1510-21 PR 2021-03	BC12	1510/21	28.00	PR	APUCARANA	3-2021	F	9533	85.1	626.2	96.8	98.1
CHIKV NBC13 1885-21 PR 2021-04	BC13	1885/21	25.00	PR	APUCARANA	4-2021	F	11817	85.6	846.7	96.9	98.1
CHIKV NBC14 1886-21 PR 2021-04	BC14	1886/21	27.00	PR	APUCARANA	4-2021	F	16728	84.1	1088	96.9	97.9
CHIKV NBC15_2094-21 PR 2021-04	BC15	2094/21	30.00	PR	APUCARANA	4-2021	F	8409	74.2	514.4	96.7	97.7
CHIKV NBC16_2049-21 PR 2021-04	BC16	2049/21	24.00	PR	APUCARANA	4-2021	F	11043	82.5	755.7	96.9	98.1
CHIKV NBC17 1204-21 PR 2021-03	BC17	1204/21	25.00	PR	APUCARANA	3-2021	M	10362	84.8	723.3	96.9	98.2
CHIKV NBC18 1406-21 PR 2021-03	BC18	1406/21	33.00	PR	APUCARANA	3-2021	F	1854	55.5	180.8	96.6	97.5
CHIKV NBC19 1290-21 PR 2021-03	BC19	1290/21	29.00	PR	APUCARANA	3-2021	F	10815	78.8	736.8	96.8	98
CHIKV NBC20 1984-21 PR 2021-04	BC20	1984/21	30.00	PR	APUCARANA	4-2021	F	11587	81.2	671.2	96.9	98
CHIKV NBC21 1439-21 PR 2021-03	BC21	1439/21	29.00	PR	APUCARANA	3-2021	F	21438	82.1	1377.4	96.9	98
CHIKV RN ZDC-933 2022-04	BC22	ZDC 933	25.00	RN	NOVA CRUZ	4-2022	M	22831	94	1903.12	96.6	98.2

CHIKV RN ZDC-719 2022-03	BC49	ZDC 719	29.00	RN	PARELHAS	3-2022	M	13726	93.3	808.5	96.7	98.2
CHIKV RN ZDC-720 2022-03	BC50	ZDC 720	30.00	RN	PARELHAS	3-2022	M	14267	85.7	886.8	96.5	98
CHIKV RN ZDC-723 2022-03	BC51	ZDC 723	23.00	RN	PARELHAS	3-2022	F	16660	94.4	1403.1	96.5	98
CHIKV RN ZDC-790 2022-04	BC52	ZDC 790	22.00	RN	POCO BRANCO	4-2022	F	75876	93.6	5957.9	96.7	98.3
CHIKV RN ZDC-796 2022-03	BC53	ZDC 796	31.00	RN	ACARI	3-2022	F	34090	94.4	2313.8	96.6	98.2
CHIKV RN ZDC-798 2022-03	BC54	ZDC 798	25.00	RN	ACARI	3-2022	M	33333	94.6	2107.7	96.6	98.2
CHIKV RN ZDC-816 2022-04	BC55	ZDC 816	23.00	RN	TIBAU DO SUL	4-2022	M	37289	94.4	2756.6	96.4	98
CHIKV RN ZDC-820 2022-04	BC56	ZDC 820	23.00	RN	JUNDIA	4-2022	M	46488	94.1	2939.4	96.6	98.2
CHIKV RN ZDC-822 2022-04	BC57	ZDC 822	28.00	RN	JUNDIA	4-2022	F	18565	92.2	1045	96.7	98.1
CHIKV RN ZDC-825 2022-04	BC58	ZDC 825	25.00	RN	SANTA CRUZ	4-2022	F	24725	94.5	1617.2	96.6	98.3
CHIKV RN ZDC-826 2022-04	BC59	ZDC 826	25.00	RN	SANTA CRUZ	4-2022	M	21229	93.6	1376.7	96.6	98.2
CHIKV RN ZDC-829 2022-04	BC60	ZDC 829	23.00	RN	MACAIBA	4-2022	F	24580	94.6	1623.6	96.5	98.2
CHIKV RN ZDC-845 2022-04	BC61	ZDC 845	19.00	RN	NOVA CRUZ	4-2022	M	23434	94.1	1731.5	96.6	98.2
CHIKV RN ZDC-932 2022-04	BC62	ZDC 932	19.00	RN	NOVA CRUZ	4-2022	F	36594	94.7	3179.1	96.5	98.1
CHIKV RN ZDC-938 2022-04	BC63	ZDC 938	23.00	RN	NOVA CRUZ	4-2022	F	30512	94.2	2046.9	96.6	98.1
CHIKV RN ZDC-939 2022-04	BC64	ZDC 939	24.00	RN	NOVA CRUZ	4-2022	F	28374	94.6	1703.3	96.3	98
CHIKV RN ZDC-968 2022-04	BC65	ZDC 968	23.00	RN	JANDAIRA	4-2022	M	32854	94.6	2161.3	96.6	98.1
CHIKV RN ZDC-1035 2022-04	BC66	ZDC 1035	29.00	RN	PARNAMIRIM	4-2022	F	19157	91.3	1155.5	96.4	98.1
CHIKV RN ZDC-1038 2022-05	BC67	ZDC 1038	24.00	RN	NATAL	5-2022	F	20378	93.2	1325.4	96.7	98.2
CHIKV RN ZDC-1119 2022-04	BC68	ZDC 1119	22.00	RN	SANTA CRUZ	4-2022	M	28747	94.1	2151.1	96.7	98.3
CHIKV RN ZDC-1123 2022-05	BC69	ZDC 1123	23.00	RN	TIBAU DO SUL	5-2022	F	36601	94.4	2324	96.6	98.2
CHIKV RN ZDC-1125 2022-05	BC70	ZDC 1125	19.00	RN	PARNAMIRIM	5-2022	M	48868	95	3424.7	96.5	98.1
CHIKV RN ZDC-1170 2022-05	BC71	ZDC 1170	28.00	RN	MACAU	5-2022	F	27905	94.2	1667.4	96.7	98.2
CHIKV RN ZDC-1237 2022-05	BC72	ZDC 1237	25.00	RN	SITIO NOVO	5-2022	F	14196	89.9	871	96.6	98.1
CHIKV RN ZDC-1293 2022-05	BC73	ZDC 1293	21.00	RN	JANDAIRA	5-2022	F	31397	94.7	1889.4	96.6	98.1
CHIKV RN ZDC-1294 2022-05	BC74	ZDC 1294	17.00	RN	JANDAIRA	5-2022	M	33118	94.5	2512.2	96.6	98.2
CHIKV RN ZDC-1305 2022-05	BC75	ZDC 1305	23.00	RN	SANTO ANTONIO	5-2022	M	26277	93	1628.9	96.7	98.1
CHIKV RN ZDC-1362 2022-05	BC76	ZDC 1362	27.00	RN	MONTE ALEGRE	5-2022	M	30405	94.1	2037.6	96.6	98.2
CHIKV RN ZDC-1367 2022-05	BC77	ZDC 1367	20.00	RN	MONTE ALEGRE	5-2022	F	38156	92.9	2430.5	96.6	98.1
CHIKV RN ZDC-1368 2022-05	BC78	ZDC 1368	21.00	RN	MONTE ALEGRE	5-2022	F	34587	94	2158.8	96.7	98.3
CHIKV RN ZDC-1369 2022-05	BC79	ZDC 1369	16.00	RN	MONTE ALEGRE	5-2022	F	14418	94.3	1045.7	96.7	98.3
CHIKV RN ZDC-1418 2022-05	BC81	ZDC 1418	17.00	RN	IELMO MARINHO	5-2022	F	21005	94	1303.7	96.6	98.2
CHIKV RN ZDC-1485 2022-05	BC82	ZDC 1485	23.00	RN	JOAO CAMARA	5-2022	F	31660	94.2	2081.3	96.6	98.1

CHIKV RN ZDC-1492 2022-05	BC83	ZDC 1492	21.00	RN	JOAO CAMARA	5-2022	M	33367	94.1	2062	96.7	98.2
CHIKV RN ZDC-1495 2022-05	BC84	ZDC 1495	19.00	RN	JOAO CAMARA	5-2022	M	38372	94.1	2323.5	96.7	98.2
CHIKV RN ZDC-1457 2022-05	BC85	ZDC 1457	24.00	RN	PARNAMIRIM	5-2022	F	31129	94.5	1902.2	96.6	98.2
CHIKV RN ZDC-1300 2022-05	BC86	ZDC 1300	25.00	RN	JANDEIRA	5-2022	F	15458	93.6	937.4	96.8	98.2
CHIKV RN ZDC-1505 2022-05	BC87	ZDC 1505	18.00	RN	NATAL	5-2022	M	24821	92.1	1358.2	96.5	97.9
CHIKV RN ZDC-1529 2022-05	BC88	ZDC 1529	20.00	RN	JANDEIRA	5-2022	M	24643	93.7	1514.1	96.7	98.1
CHIKV RN ZDC-1607 2022-05	BC89	ZDC 1607	21.00	RN	SANTA MARIA	5-2022	M	24053	94.3	1466.8	96.7	98.3
CHIKV RN ZDC-2129 2022-06	BC90	ZDC 2129	26.00	RN	NATAL	6-2022	F	18897	92.6	1145.4	96.8	98.2
CHIKV RN ZDC-2131 2022-06	BC91	ZDC 2131	21.00	RN	NATAL	6-2022	F	21180	94.8	1407	96.5	98.1
CHIKV RN 1945 2022-05	NB93	1945 (Natal)	-	RN	Acari	5-2022	M	40492	90.3	2465.1	96.5	98
CHIKV RN 1826 2022-05	NB94	1826 (Natal)	-	RN	Nova Cruz	5-2022	F	19252	62.9	1494.8	95.9	96.9
CHIKV NB45 SE-01 2021-09	NB45	SE-01	21.33	SE	INDIAROA	9-2021	F	1880	93	128.5	96.9	98.4
CHIKV NB46 SE-02 2021-09	NB46	SE-02	18.00	SE	PORTO DA FOLHA	9-2021	M	110248	94.3	8344.5	96.7	98.2
CHIKV NB47 SE-03 2021-09	NB47	SE-03	18.51	SE	PORTO DA FOLHA	9-2021	M	106318	94.2	7110.1	96.7	98.2
CHIKV NB48 SE-04 2021-09	NB48	SE-04	18.14	SE	NEOPOLIS	9-2021	F	94148	93.6	7163.6	96.6	98
CHIKV NB49 SE-05 2021-09	NB49	SE-05	22.00	SE	INDIAROA	9-2021	F	118972	93.5	6326.2	96.7	98.1
CHIKV NB50 SE-06 2021-09	NB50	SE-06	22.34	SE	PORTO DA FOLHA	9-2021	F	135111	94.5	8731.7	96.7	98.2
CHIKV NB51 SE-07 2021-09	NB51	SE-07	19.46	SE	LAGARTO	9-2021	M	100335	95	7164.9	96.4	98.1
CHIKV NB52 SE-08 2021-09	NB52	SE-08	18.61	SE	LAGARTO	9-2021	F	52198	92.6	3633.4	96.8	98.3
CHIKV NB53 SE-09 2021-09	NB53	SE-09	22.45	SE	LAGARTO	9-2021	M	73612	94	5180.4	96.7	98.2
CHIKV NB54 SE-10 2021-09	NB54	SE-10	14.00	SE	ARACAJU	9-2021	F	106552	94.8	9112.9	96.7	98.1
CHIKV NB55 SE-11 2021-09	NB55	SE-11	23.08	SE	SAO CRISTOVAO	9-2021	M	101483	93.2	5573	96.8	98.2
CHIKV NB56 SE-12 2021-09	NB56	SE-12	21.00	SE	PORTO DA FOLHA	9-2021	F	96469	94.6	6281.7	96.7	98.2
CHIKV NB57 SE-13 2021-09	NB57	SE-13	21.07	SE	PORTO DA FOLHA	9-2021	F	51279	94.1	3802.4	96.7	98.2
CHIKV NB58 SE-14 2021-09	NB58	SE-14	19.00	SE	PORTO DA FOLHA	9-2021	F	98971	95.5	6908.8	96.3	98.3
CHIKV NB59 SE-15 2021-09	NB59	SE-15	19.00	SE	INDIAROA	9-2021	F	58527	93.9	4795.6	96.7	98.2
CHIKV NB60 SE-16 2021-09	NB60	SE-16	20.00	SE	NEOPOLIS	9-2021	F	49195	94.2	3461	96.7	98.3
CHIKV NB61 SE-17 2021-09	NB61	SE-17	19.49	SE	NEOPOLIS	9-2021	F	19353	93.3	1599.9	96.7	98.2
CHIKV NB62 SE-18 2021-09	NB62	SE-18	21.00	SE	PORTO DA FOLHA	9-2021	M	32695	94.6	2492.5	96.6	98.1
CHIKV NB63 SE-19 2021-09	NB63	SE-19	18.77	SE	PORTO DA FOLHA	9-2021	F	58053	94.1	4533.8	96.7	98.2
CHIKV NB64 SE-20 2021-09	NB64	SE-20	22.26	SE	PORTO DA FOLHA	9-2021	M	63387	95	4991.5	96.5	98.2
CHIKV NB65 SE-21 2021-09	NB65	SE-21	21.75	SE	NEOPOLIS	9-2021	F	117427	94.8	7486.4	96.5	98
CHIKV NB66 SE-22 2021-10	NB66	SE-22	24.63	SE	UMBAUBA	10-2021	F	34284	94.5	2208.5	96.6	98.2

CHIKV NB67 SE-23 2021-09	NB67	SE-23	20.21	SE	LAGARTO	9-2021	F	52885	92.3	3639.7	96.8	98.2
CHIKV NB68 SE-24 2021-09	NB68	SE-24	22.17	SE	LAGARTO	9-2021	M	25638	94	1685.2	96.7	98.2
CHIKV NB69 SE-25 2021-10	NB69	SE-25	17.96	SE	NEOPOLIS	10-2021	F	65546	95.5	5133.3	96.3	98.2
CHIKV NB70 SE-26 2021-10	NB70	SE-26	21.58	SE	PORTO DA FOLHA	10-2021	M	21223	92.9	1228.6	96.8	98.1
CHIKV NB71 SE-27 2021-10	NB71	SE-27	20.18	SE	PORTO DA FOLHA	10-2021	M	2253	92.1	132.7	96.8	98.3
CHIKV NB72 SE-28 2021-10	NB72	SE-28	21.58	SE	NEOPOLIS	10-2021	F	52344	93.5	3745.6	96.7	98.2
CHIKV NB73 SE-29 2021-10	NB73	SE-29	20.17	SE	PORTO DA FOLHA	10-2021	M	61864	94.2	4416.5	96.7	98.2
CHIKV NB74 SE-30 2021-09	NB74	SE-30	21.23	SE	INDIAROBA	9-2021	M	62198	94.8	4092.9	96.5	97.9
CHIKV NB75 SE-31 2021-10	NB75	SE-31	18.32	SE	PORTO DA FOLHA	10-2021	F	100856	93.6	6944.3	96.6	98
CHIKV NB76 SE-32 2021-10	NB76	SE-32	22.00	SE	PORTO DA FOLHA	10-2021	F	44672	92.3	3317.7	96.7	98.2
CHIKV NB77 SE-33 2021-10	NB77	SE-33	16.00	SE	MONTE ALEGRE DE SERGIPE	10-2021	M	77541	94.2	6055.2	96.7	98.2
CHIKV NB78 SE-34 2021-10	NB78	SE-34	24.32	SE	LAGARTO	10-2021	M	90753	93.3	6368.9	96.7	98.2
CHIKV NB79 SE-35 2021-10	NB79	SE-35	19.53	SE	PORTO DA FOLHA	10-2021	F	45355	93.2	3198.8	96.7	98.2
CHIKV NB80 SE-36 2021-10	NB80	SE-36	19.92	SE	PORTO DA FOLHA	10-2021	M	48604	93.2	3189.4	96.7	98.3
CHIKV NB81 SE-37 2021-10	NB81	SE-37	23.47	SE	ARACAJU	10-2021	M	2661	94.1	138	96.8	98.3
CHIKV NB82 SE-38 2021-10	NB82	SE-38	14.98	SE	MONTE ALEGRE DE SERGIPE	10-2021	F	2433	94.3	119.3	96.8	98.4
CHIKV NB83 SE-39 2021-10	NB83	SE-39	19.06	SE	PORTO DA FOLHA	10-2021	M	2726	94.1	126.2	96.8	98.3
CHIKV NB84 SE-40 2021-10	NB84	SE-40	22.96	SE	PORTO DA FOLHA	10-2021	M	2893	92.4	171.6	96.8	98.3
CHIKV NB85 SE-41 2021-10	NB85	SE-41	20.55	SE	PORTO DA FOLHA	10-2021	F	2214	92.7	136.9	96.8	98.3
CHIKV NB86 SE-42 2021-10	NB86	SE-42	19.40	SE	PORTO DA FOLHA	10-2021	M	2937	92.9	158.7	96.8	98.3
CHIKV NB87 SE-43 2021-10	NB87	SE-43	21.97	SE	PORTO DA FOLHA	10-2021	F	1971	92.4	107.1	96.9	98.3
CHIKV NB88 SE-44 2021-10	NB88	SE-44	32.36	SE	SIMAO DIAS	10-2021	F	2609	93.9	148.4	96.8	98.3
CHIKV MG 25-22-RED 2021-12	UDP0318	25.22_RED	22.70	MG	GOVERNADOR VALADARES	12-2021	F	941173	96	8767.19	-	-
CHIKV MG 270-22-RED 2022-02	UDP0319	270.22_RED	25.80	MG	MONTES CLAROS	2-2022	F	835235	95	7554.2	-	-
CHIKV MG 571-22-RED 2022-03	UDP0320	571.22_RED	22.50	MG	FRANCISCO SA	3-2022	M	870644	96	8020.93	-	-
CHIKV MG 612-22-RED 2022-02	UDP0321	612.22_RED	26.20	MG	BELO HORIZONTE	2-2022	F	906493	96	8369.2	-	-
CHIKV MG 726-22-RED 2022-03	UDP0322	726.22_RED	23.40	MG	SALINAS	3-2022	M	364403	96	3326.73	-	-
CHIKV MG 736-22-RED 2022-03	UDP0323	736.22_RED	34.00	MG	MONTE AZUL	3-2022	F	188645	42	1612.93	-	-
CHIKV MG 1754-22-RED 2022-03	UDP0324	1754.22_RED	24.40	MG	ARACUAI	3-2022	F	892530	96	8247.74	-	-
CHIKV MG 768-22-C-RED 2022-03	UDP0325	768.22_C_RED	28.50	MG	MONTES CLAROS	3-2022	M	1011157	96	9348.75	-	-
CHIKV BA BC01 2022-03	BC01	292346970	21.30	BA	ITAJUIPE	3-2022	F	14403.0	94.9	1024.3	96.4	97.9
CHIKV BA BC02 2022-03	BC02	292342712	30.40	BA	ITAJUIPE	3-2022	F	21384.0	87.5	1171.4	96.4	97.7
CHIKV BA BC03 2022-03	BC03	292342523	21.10	BA	ITAJUIPE	3-2022	F	23675.0	94.4	1539.3	96.7	98.2

CHIKV BA BC04 2022-03	BC04	292347014	24.60	BA	ITAJUIPE	3-2022	M	29038.0	94.0	1559.7	96.7	98.2
CHIKV BA BC05 2022-03	BC05	292342731	23.60	BA	ITAJUIPE	3-2022	F	24475.0	94.4	1462.5	96.6	98.0
CHIKV BA BC06 2022-02	BC06	292318861	25.60	BA	ITAJUIPE	2-2022	M	42181.0	94.3	2232.2	96.5	98.0
CHIKV BA BC07 2022-03	BC07	292340189	21.90	BA	JUAZEIRO	3-2022	M	24179.0	94.1	1619.3	96.8	98.2
CHIKV BA BC08 2022-03	BC08	292309317	28.60	BA	ITAPETINGA	3-2022	F	25283.0	87.8	1285.2	96.8	98.2
CHIKV BA BC09 2022-03	BC09	292329398	22.00	BA	ITUJUTABA	3-2022	M	1735.0	93.1	112.5	96.8	98.1
CHIKV BA BC10 2022-03	BC10	292345418	24.50	BA	JACOBINA	3-2022	F	27959.0	94.0	1740.2	96.7	98.2
CHIKV BA BC11 2022-03	BC11	292341930	21.60	BA	MADRE DE DEUS	3-2022	F	27264.0	94.1	1919.2	96.7	98.2
CHIKV BA BC12 2022-03	BC12	292339837	23.50	BA	UAUA	3-2022	M	31843.0	94.7	1863.1	96.7	98.2
CHIKV BA BC13 2022-03	BC13	292354609	17.90	BA	ALMADINA	3-2022	F	26158.0	94.5	2001.9	96.6	98.1
CHIKV BA BC14 2022-03	BC14	292342338	20.30	BA	COARACI	3-2022	F	28528.0	94.3	1834.3	96.6	98.2
CHIKV BA BC15 2022-03	BC15	292324218	16.40	BA	COARACI	3-2022	M	17553.0	94.4	1366.6	96.7	98.2
CHIKV BA BC16 2022-03	BC16	292324308	27.30	BA	COARACI	3-2022	F	27338.0	94.7	1537.5	96.4	98.1
CHIKV BA BC17 2022-03	BC17	292335413	28.60	BA	FEIRA DE SANTANA	3-2022	F	6640.0	89.0	353.8	96.6	97.8
CHIKV BA BC18 2022-03	BC18	292351417	26.90	BA	ITAJUIPE	3-2022	M	16125.0	94.0	1251.3	96.6	98.2
CHIKV BA BC19 2022-03	BC19	292342764	27.90	BA	ITAJUIPE	3-2022	F	22548.0	94.1	1109.0	96.7	98.2
CHIKV BA BC20 2022-03	BC20	292342653	27.20	BA	ITAJUIPE	3-2022	M	29063.0	92.9	1603.0	96.7	98.1
CHIKV BA BC21 2022-03	BC21	292326836	18.90	BA	ITAJUIPE	3-2022	M	33825.0	94.5	2267.3	96.6	98.1
CHIKV BA BC22 2022-03	BC22	292326999	22.70	BA	ITAJUIPE	3-2022	F	33317.0	94.0	2031.0	96.6	98.1
CHIKV BA BC23 2022-03	BC23	292326262	26.90	BA	ITAMARAJU	3-2022	M	30156.0	92.6	1658.3	96.7	98.1
CHIKV BA BC24 2022-03	BC24	292341330	26.00	BA	ITAPITANGA	3-2022	F	33698.0	94.1	1862.7	96.4	98.1
CHIKV BA BC25 2022-03	BC25	292333190	21.80	BA	JACOBINA	3-2022	F	8149.0	94.4	604.9	96.6	98.0
CHIKV BA BC26 2022-03	BC26	292329319	27.80	BA	JUAZEIRO	3-2022	M	25549.0	94.5	1315.3	96.7	98.2
CHIKV BA BC27 2022-05	BC27	292444774	23.60	BA	PARIPIRANGA	5-2022	F	20410.0	94.5	1243.8	96.7	98.1
CHIKV BA BC28 2022-05	BC28	292444767	20.10	BA	PARIPIRANGA	5-2022	M	20000.0	94.1	1425.5	96.7	98.2
CHIKV BA BC29 2022-05	BC29	292442988	20.80	BA	JEQUIE	5-2022	F	25754.0	94.3	1585.8	96.6	98.1
CHIKV BA BC30 2022-05	BC30	292452959	18.70	BA	ITABUNA	5-2022	F	20391.0	94.1	1467.5	96.7	98.2
CHIKV BA BC31 2022-06	BC31	292456977	16.60	BA	POJUCA	6-2022	F	36710.0	93.6	2164.9	96.7	98.1
CHIKV BA BC32 2022-06	BC32	292468683	19.80	BA	CAMACARI	6-2022	M	25695.0	94.5	1683.7	96.7	98.3
CHIKV BA BC33 2022-05	BC33	292419147	20.90	BA	ITABUNA	5-2022	F	20607.0	94.2	1346.2	96.6	98.1
CHIKV BA BC34 2022-05	BC34	292419397	17.40	BA	ITABUNA	5-2022	M	14290.0	94.7	1098.7	96.6	98.1
CHIKV BA BC35 2022-05	BC35	292419463	21.30	BA	ITABUNA	5-2022	F	28251.0	92.3	1661.1	96.7	98.0
CHIKV BA BC36 2022-04	BC36	292399973	22.30	BA	ITABUNA	4-2022	F	31974.0	94.4	1927.8	96.4	97.9

CHIKV BA BC37 2022-04	BC37	292397013	21.00	BA	ITAJUIPE	4-2022	F	28691.0	94.4	1825.3	96.6	98.1
CHIKV BA BC38 2022-04	BC38	292373156	21.50	BA	ITAJUIPE	4-2022	M	30704.0	93.9	2297.8	96.7	98.2
CHIKV BA BC39 2022-04	BC39	292385170	29.90	BA	JUAZEIRO	4-2022	M	14959.0	88.3	808.1	96.7	98.2
CHIKV BA BC40 2022-04	BC40	292395603	20.30	BA	EUNAPOLIS	4-2022	F	24366.0	94.0	1604.8	96.7	98.2
CHIKV BA BC41 2022-04	BC41	292397361	17.80	BA	ILHEUS	4-2022	M	16506.0	94.1	1287.3	96.6	98.2
CHIKV BA BC42 2022-04	BC42	292395830	18.70	BA	ITABUNA	4-2022	F	18083.0	94.2	1249.9	96.6	98.2
CHIKV BA BC43 2022-05	BC43	292408228	17.50	BA	ITABUNA	5-2022	M	20984.0	94.1	1646.4	96.6	98.2
CHIKV BA BC44 2022-04	BC44	292398529	20.70	BA	MADRE DE DEUS	4-2022	M	22470.0	94.6	1469.8	96.7	98.2
CHIKV BA BC45 2022-04	BC45	292378738	23.20	BA	MORRO DO CHAPEU	4-2022	M	28955.0	93.5	1730.6	96.7	98.1
CHIKV BA BC46 2022-04	BC46	292397438	21.20	BA	SERRA	4-2022	M	23831.0	94.4	1500.1	96.6	98.1
CHIKV BA BC47 2022-04	BC47	292370309	19.80	BA	CAMPO FORMOSO	4-2022	M	23126.0	94.3	1597.5	96.7	98.2
CHIKV BA BC48 2022-03	BC48	292316064	35.90	BA	ITAMARAJU	3-2022	F	23841.0	78.7	1476.4	96.4	98.0
CHIKV BA BC94 2022-03	BC94	292350702	23.60	BA	PORTO SEGURO	3-2022	F	25149.0	91.6	1256.5	96.7	98.2
CHIKV BA FS0030 2015-07	NB35	FS0030	26.00	BA	Feira de Santana	7-2015	F	12212.0	73.8	780.6	96.4	97.8
CHIKV BA FS0032 2015-07	NB36	FS0032	27.00	BA	Feira de Santana	7-2015	F	25812.0	77.6	1401.0	96.8	98.1
CHIKV BA FS0035 2015-07	NB37	FS0035	23.00	BA	Feira de Santana	7-2015	M	23109.0	90.6	1099.6	96.8	98.2
CHIKV BA FS0047 2015-07	NB38	FS0047	28.00	BA	Feira de Santana	7-2015	F	14481.0	73.8	889.1	96.8	98.0
CHIKV BA FS0048 2015-07	NB39	FS0048	30.00	BA	Feira de Santana	7-2015	M	8604.0	59.1	621.6	96.8	97.7
CHIKV BA FS0055 2015-07	NB40	FS0055	25.00	BA	Feira de Santana	7-2015	M	18706.0	87.9	941.5	96.9	98.4
CHIKV BA FS0066 2015-07	NB41	FS0066	22.00	BA	Feira de Santana	7-2015	F	16922.0	92.9	983.1	96.9	98.4
CHIKV BA FS0089 2015-07	NB42	FS0089	30.00	BA	Feira de Santana	7-2015	F	13283.0	69.0	812.2	96.9	98.1
CHIKV BA FS0106 2015-07	NB43	FS0106	30.00	BA	Feira de Santana	7-2015	F	15356.0	65.3	988.5	96.8	97.9
CHIKV BA FS0116 2015-07	NB44	FS0116	30.00	BA	Feira de Santana	7-2015	F	3426.0	31.8	455.9	96.8	97.7
CHIKV BA FS0124 2015-07	NB45	FS0124	30.00	BA	Feira de Santana	7-2015	F	14783.0	69.6	974.9	96.6	97.6
CHIKV BA FS0129 2015-07	NB46	FS0129	26.00	BA	Feira de Santana	7-2015	M	17350.0	76.1	1095.5	97.0	98.3
CHIKV BA FS0132 2015-07	NB47	FS0132	30.00	BA	Feira de Santana	7-2015	F	5605.0	50.1	482.5	96.4	97.3
CHIKV BA FS0014A 2015-08	NB48	FS0014A	30.00	BA	Feira de Santana	8-2015	F	10910.0	62.1	763.4	96.3	97.3
CHIKV BA DFS1686 2019-10	NB04	DFS- 1686	22.57	BA	Feira de Santana	10-2019	M	314126.0	89.3	16143.3	96.6	97.9
CHIKV BA DFS1786 2019-11	NB05	DFS- 1786	30.60	BA	Feira de Santana	11-2019	M	219074.0	75.8	12052.6	96.4	97.5
CHIKV BA DFS1808 2019-11	NB06	DFS- 1808	28.60	BA	Feira de Santana	11-2019	M	326059.0	87.6	17001.9	96.5	97.9
CHIKV BA DFS1837 2019-11	NB07	DFS- 1837	21.72	BA	Feira de Santana	11-2019	F	207689.0	92.0	9717.2	96.7	98.1
CHIKV BA DFS1849 2019-11	NB08	DFS- 1849	29.54	BA	Feira de Santana	11-2019	F	253914.0	87.1	12450.4	96.6	98.0
CHIKV BA DFS1854 2019-11	NB09	DFS- 1854	35.25	BA	Feira de Santana	11-2019	F	262770.0	75.5	14107.5	96.6	97.6

CHIKV/BA/DFS1856/2019-11	NB10	DFS- 1856	31.54	BA	Feira de Santana	11-2019	F	207524.0	82.7	10561.8	96.6	98.1
--------------------------	------	-----------	-------	----	------------------	---------	---	----------	------	---------	------	------

NT: Nucleotide
AA: Amino Aci

Table S2. Centrality Metrics employed to measure transmission networks generated by the StrainHub tool.

Metastates	Degree Centrality	Indegree Centrality	Outdegree Centrality	Betweenness Centrality	Closeness Centrality	Source Hub Ratio
Paraguay	1	1	0	0	0.07	0.00
Southeast	5	2	3	6	0.11	0.60
Northeast	6	2	4	9	0.13	0.67
Haiti	1	1	0	0	0.08	0.00
Midwest	4	2	2	3	0.11	0.50
North	2	1	1	0	0.08	0.50
South	1	1	0	0	0.07	0.00

Table S3. Detailed site-by-site results from the BUSTED analysis for the envelope gene of clade I and II.

Codon	ER ($\omega > 1$) ¹	LogL	Epost[α] ²	LR ³
Clade I				
187	187,712.29	-78.412	0.294	12.721
372	742.301	-31.012	1.07	6.651
699	344.611	-92.661	0.294	3.369
60	211.964	-79.268	0.294	2.566
62	57.168	-17.817	3.408	4.991
Clade II				
187	213,975.17	-78.617	36.082	10.86
186	92,991.85	-62.607	36.082	7.669
371	726.104	-17.444	2.287	6.078
121	499.333	-15.376	0.6	7.502

184	105.634	-59.121	35.724	0.507
29	96.931	-36.048	33.526	4.941
60	19.358	-78.757	36.082	1.279
370	12.692	-42.632	36.074	1.966

¹Evidence ratio for positive selection.

²Posterior mean of the synonymous rate, α .

³Site log-likelihood ratio contribution.

Table S4. Sites under positive diversifying selection identified by HYPHY-MEME in the envelope gene of the clades I and II.

Site	alpha	beta+	LRT	p-value
Clade I				
33	0	5.58	4.31	0.05
60	3.62	364.35	7.88	0.01
62	0	284.76	8.45	0.01
138	0	5.28	4.11	0.06
184	0	58.06	7.23	0.01
187	1.09	1521.76	21.03	0
282	0	2.31	3.43	0.09
372	0	6084.51	18.38	0
441	0	5.35	6.41	0.02
539	0	9.23	4.23	0.06
695	0	556.34	9.8	0
699	0	131.88	11.93	0
Clade II				
29	0	315.97	9.55	0
53	0	3.7	3.71	0.07
60	4.18	469.33	4.83	0.04
121	0	181.66	8.77	0.01

138	0	4.53	3.31	0.09
184	0	133.16	8.43	0.01
186	4.7	988.28	12.58	0
187	2.1	1124.28	20.44	0
371	0	256.38	9.31	0
432	0	4.87	3.88	0.07
441	0	3.16	3.38	0.09
539	0	70.36	4.82	0.04
699	0	9.05	3.67	0.08

alpha: synonymous substitution rate at a site.

beta+: non-synonymous substitution rate at a site for the positive selection category.

LRT: likelihood ratio test statistic for episodic diversification.