

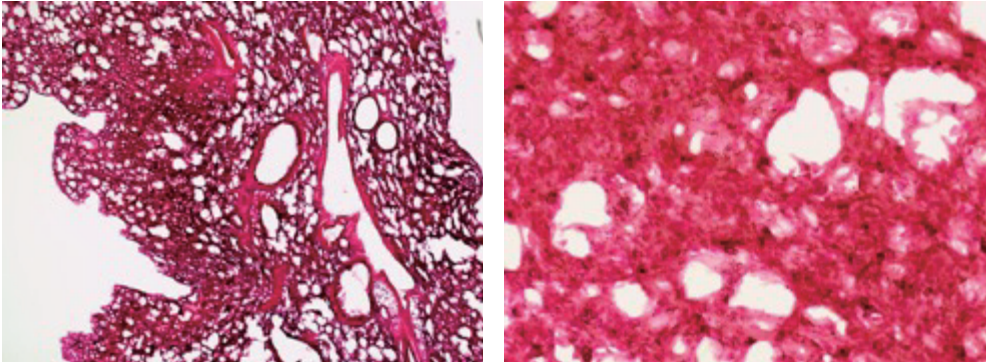
Supplemental Fig. 1

A

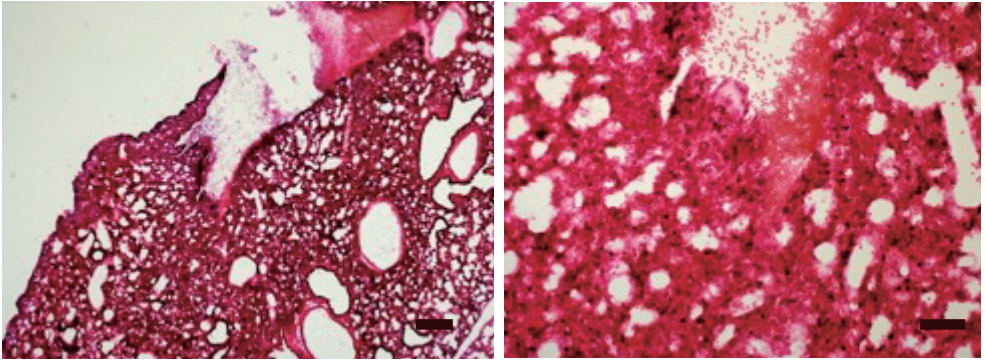
Con-IP

Interstitial pneumonia

1W

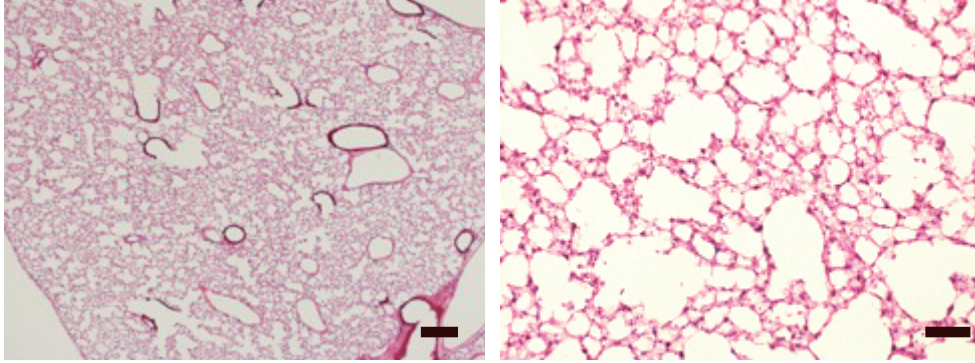
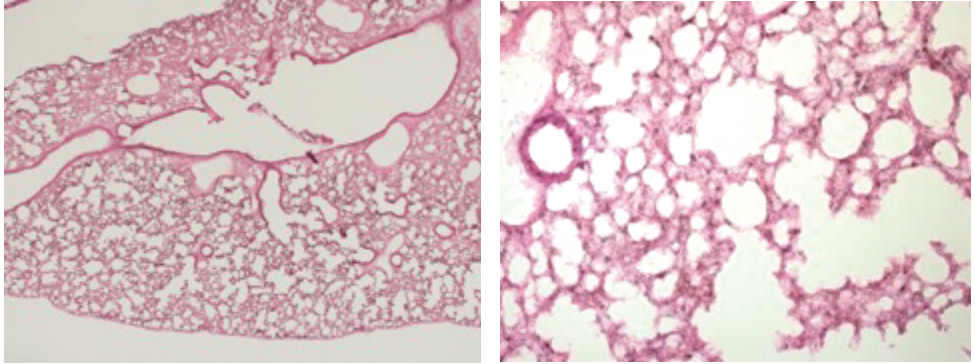


2W



B

Si-IP



Supplementary Fig. S1

Pathologic analysis of HE-stained lung specimens (A, B).

Additional microphotographs of the lung in the IP model mice treated with MTX for 1 week (upper panel) and 2 weeks (bottom panel). (A) Con-IP group (B) Si-IP group.

Scale bar: 200 μm (A, B: left); 100 μm (A, B: right).