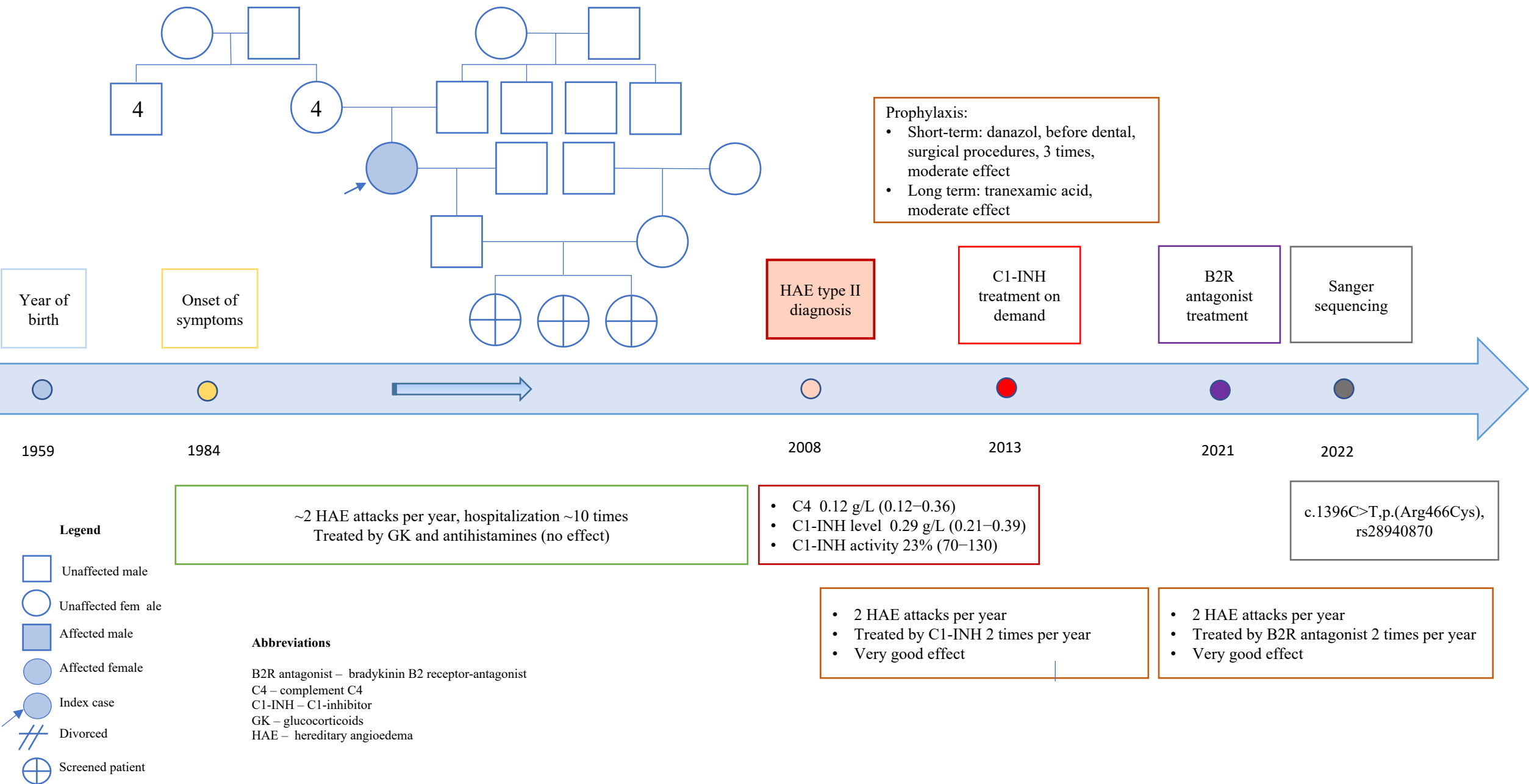
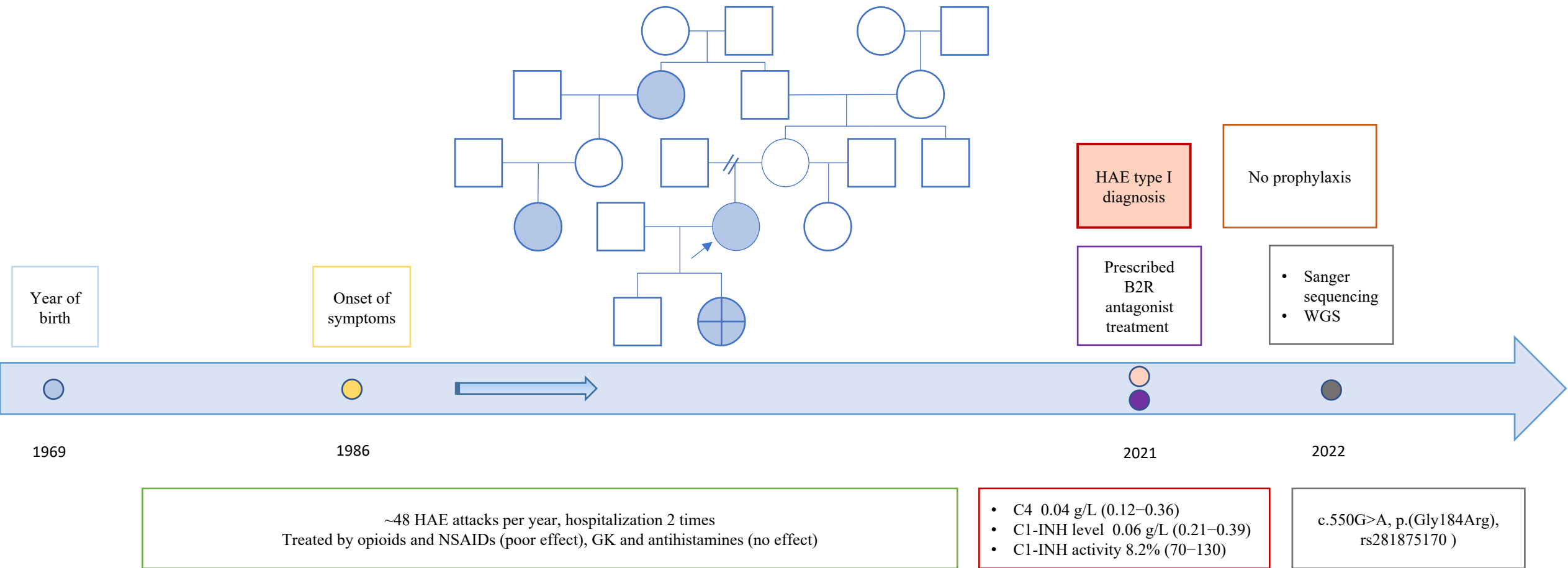


Additional file 1: figure S1. Family tree and timeline presentation of clinical characteristics, therapy, laboratory and genetic test results in a patient with hereditary angioedema. **Patient 1**



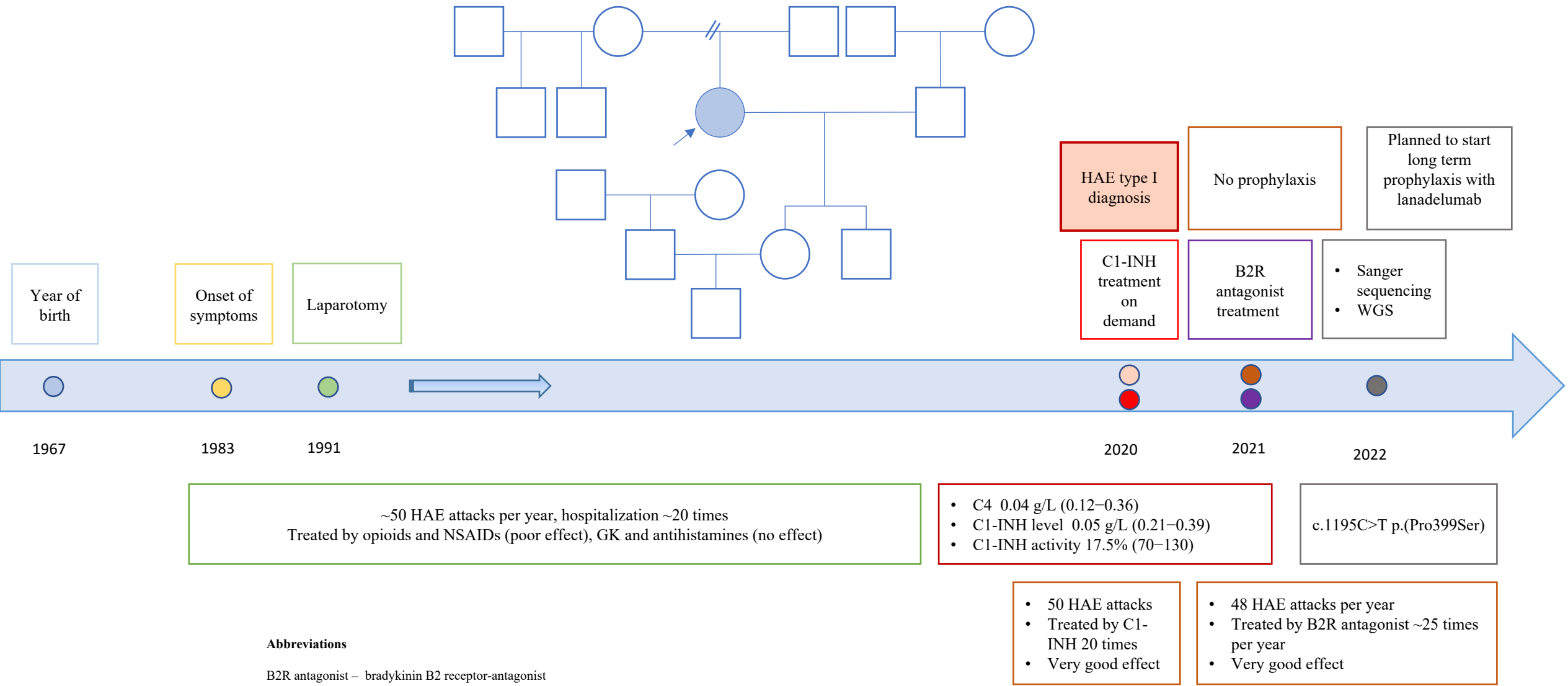
Additional file 1: figure S2. Family tree and timeline presentation of clinical characteristics therapy laboratory and genetic test results in a patient with hereditary angioedema **Patient 2**



Abbreviations

B2R antagonist – bradykinin B2 receptor-antagonist
 C1-INH – C1-inhibitor
 C4 – complement C4
 GK – glucocorticoids
 HAE – hereditary angioedema
 NSAIDs – non-steroidal anti-inflammatory drugs
 WGS – whole genome sequencing

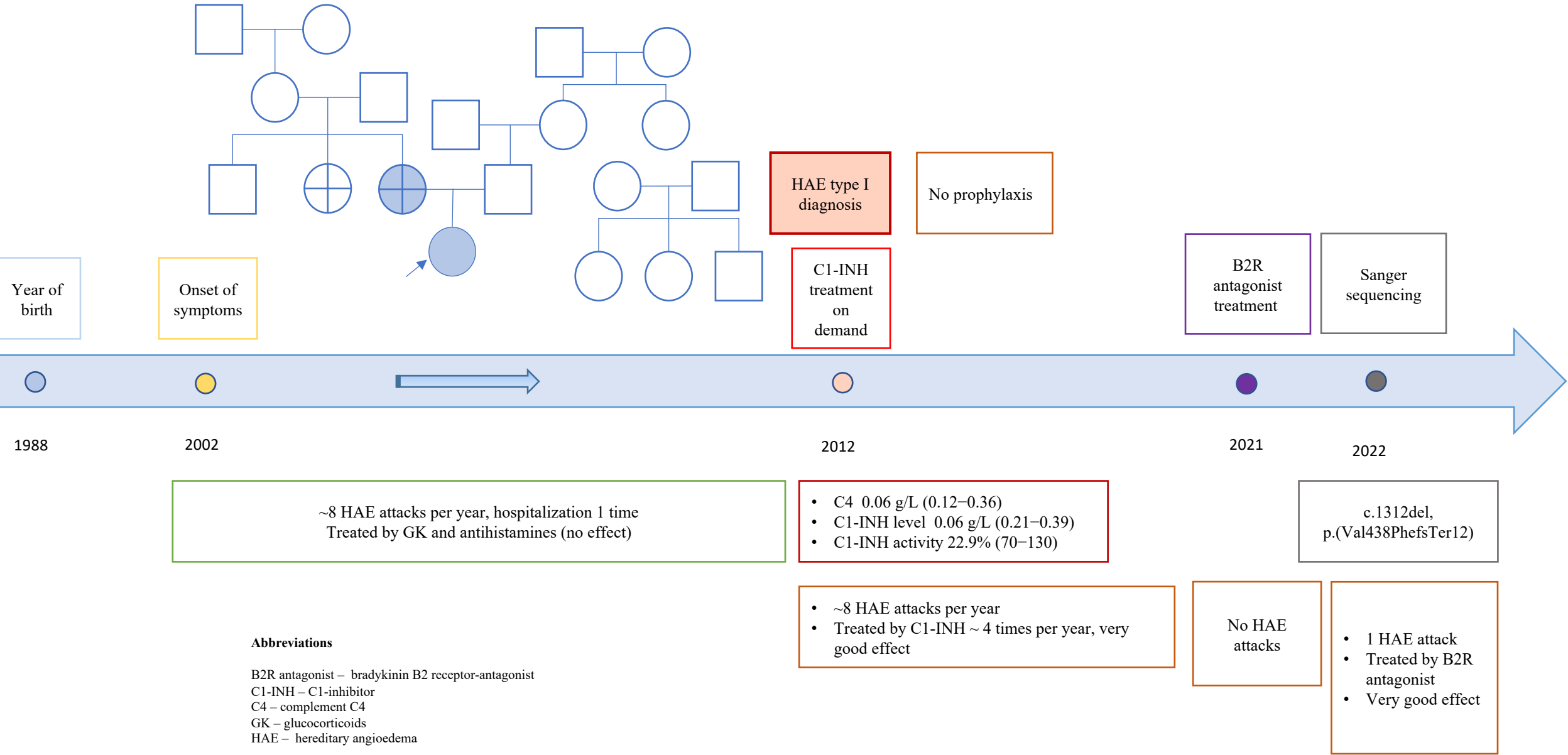
Additional file: figure S3. Family tree and timeline presentation of clinical characteristics, therapy, laboratory and genetic test results in a patient with hereditary angioedema. **Patient 3**



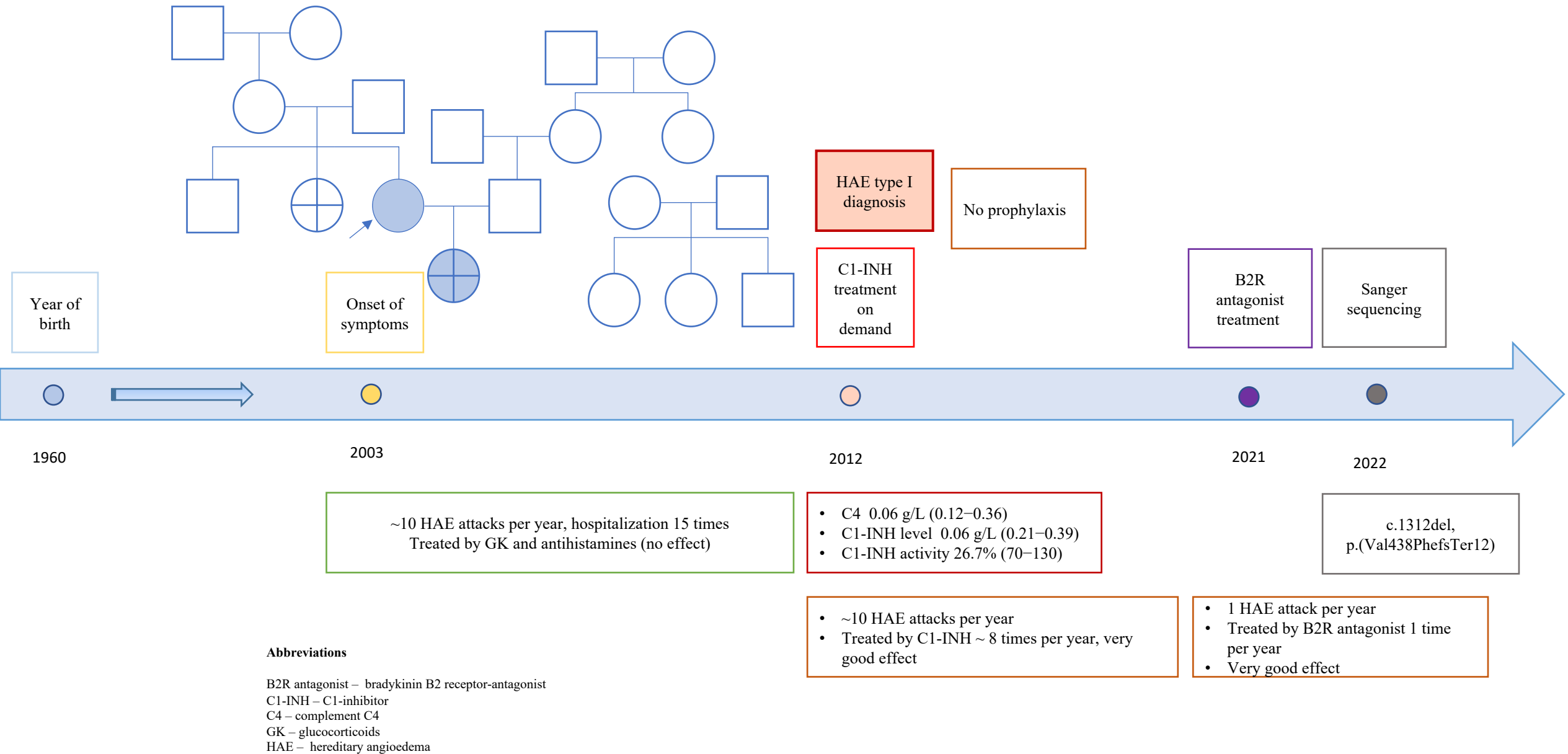
Abbreviations

- B2R antagonist – bradykinin B2 receptor-antagonist
- C1-INH – C1-inhibitor
- C4 – complement C4
- GK – glucocorticoids
- HAE – hereditary angioedema
- NSAIDs – non-steroidal anti-inflammatory drugs
- WGS – whole genome sequencing

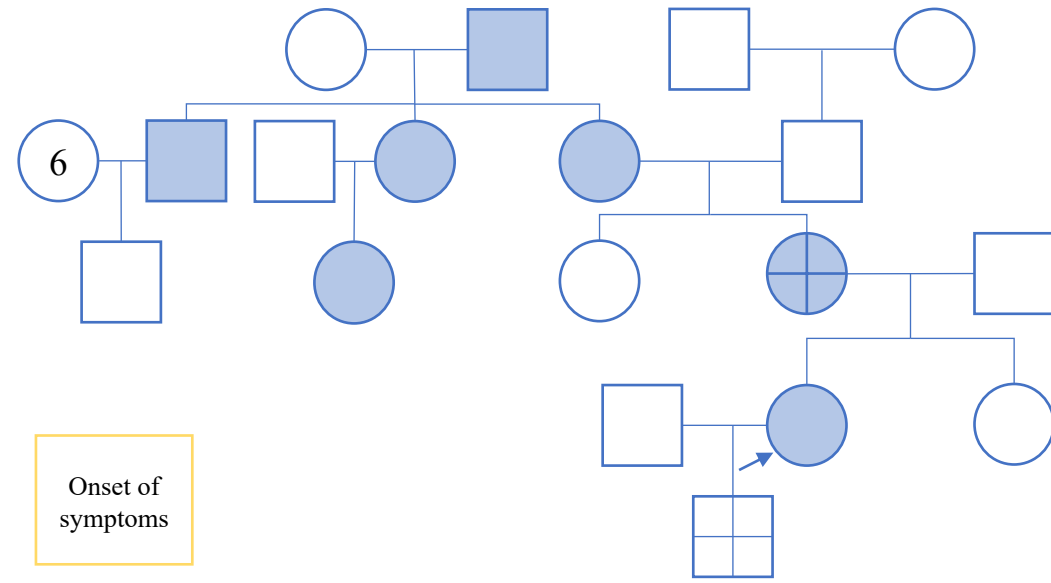
Additional file: figure S4. Family tree and timeline presentation of clinical characteristics, therapy, laboratory and genetic test results in a patient with hereditary angioedema. **Patient 4**



Additional file 1: figure S5. Family tree and timeline presentation of clinical characteristics, therapy, laboratory and genetic test results in a patient with hereditary angioedema. **Patient 5**



Additional file 1: figure S6. Family tree and timeline presentation of clinical characteristics, therapy, laboratory and genetic test results in a patient with hereditary angioedema. **Patient 6**



Prophylaxis:

- Short-term: FFP, before dental, surgical procedures, 2 times, poor effect; danazol 3 times, moderate effect
- Long term: danazol, tranexamic acid, moderate effect

Planned to start long term prophylaxis with lanadelumab

Year of birth

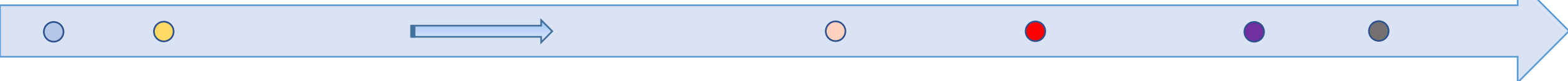
Onset of symptoms

HAE type I diagnosis

C1-INH treatment on demand

B2R antagonist treatment

- Sanger sequencing
- WGS



1987 1994 2006 2013 2021 2022

~60 HAE attacks per year, hospitalization 3 times
Treated by GK and antihistamines (no effect)

- C4 0.05 g/L (0.12–0.36)
- C1-INH level 0.07 g/L (0.21–0.39)
- C1-INH activity 22.9% (70–130)

c.1249+4A>G, p.?

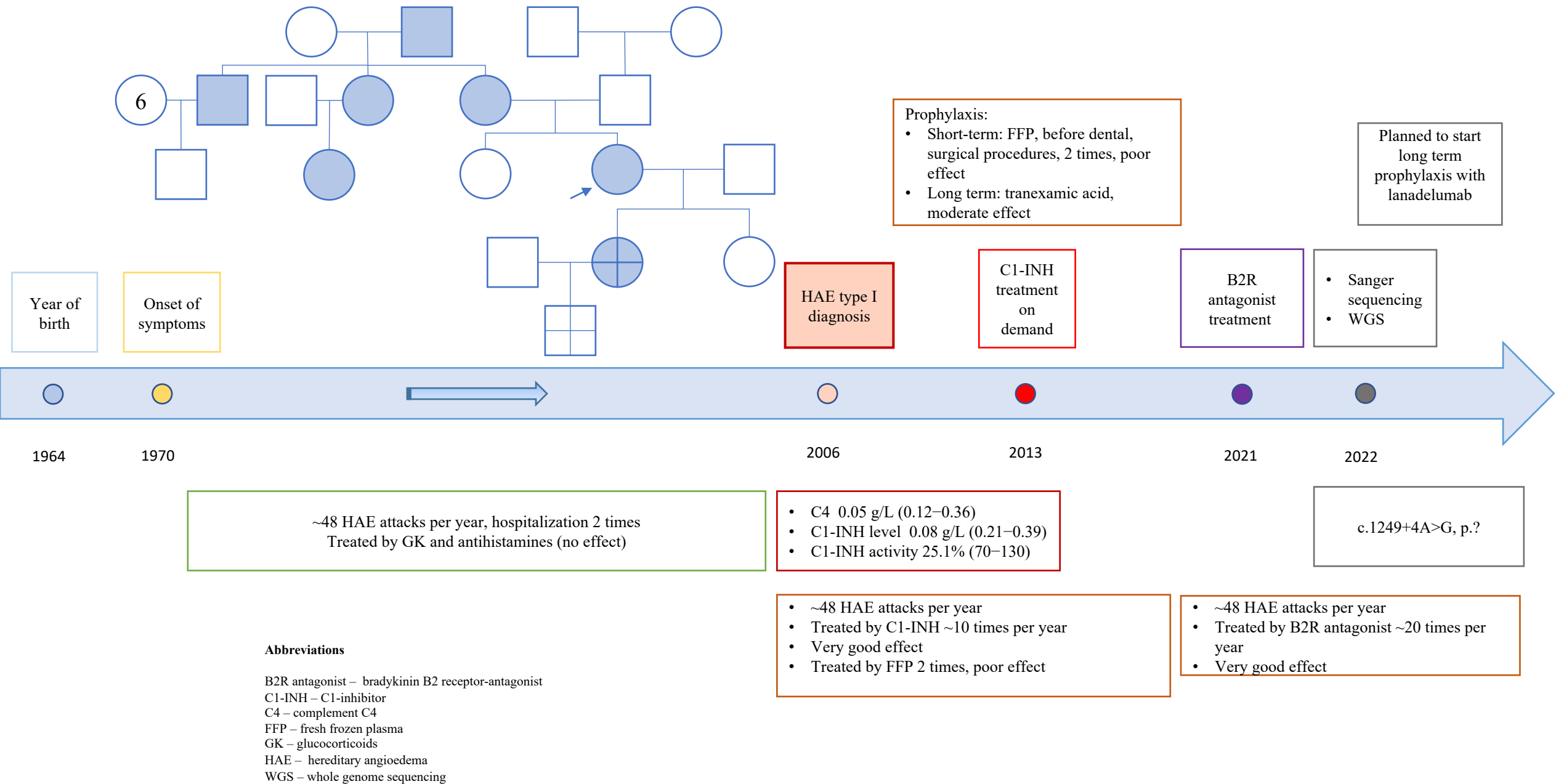
- ~60 HAE attacks per year
- Treated by C1-INH ~10 times per year, very good effect
- Treated by FFP 3 times, poor effect

- ~60 HAE attacks per year
- Treated by B2R antagonist ~30 times per year
- Very good effect

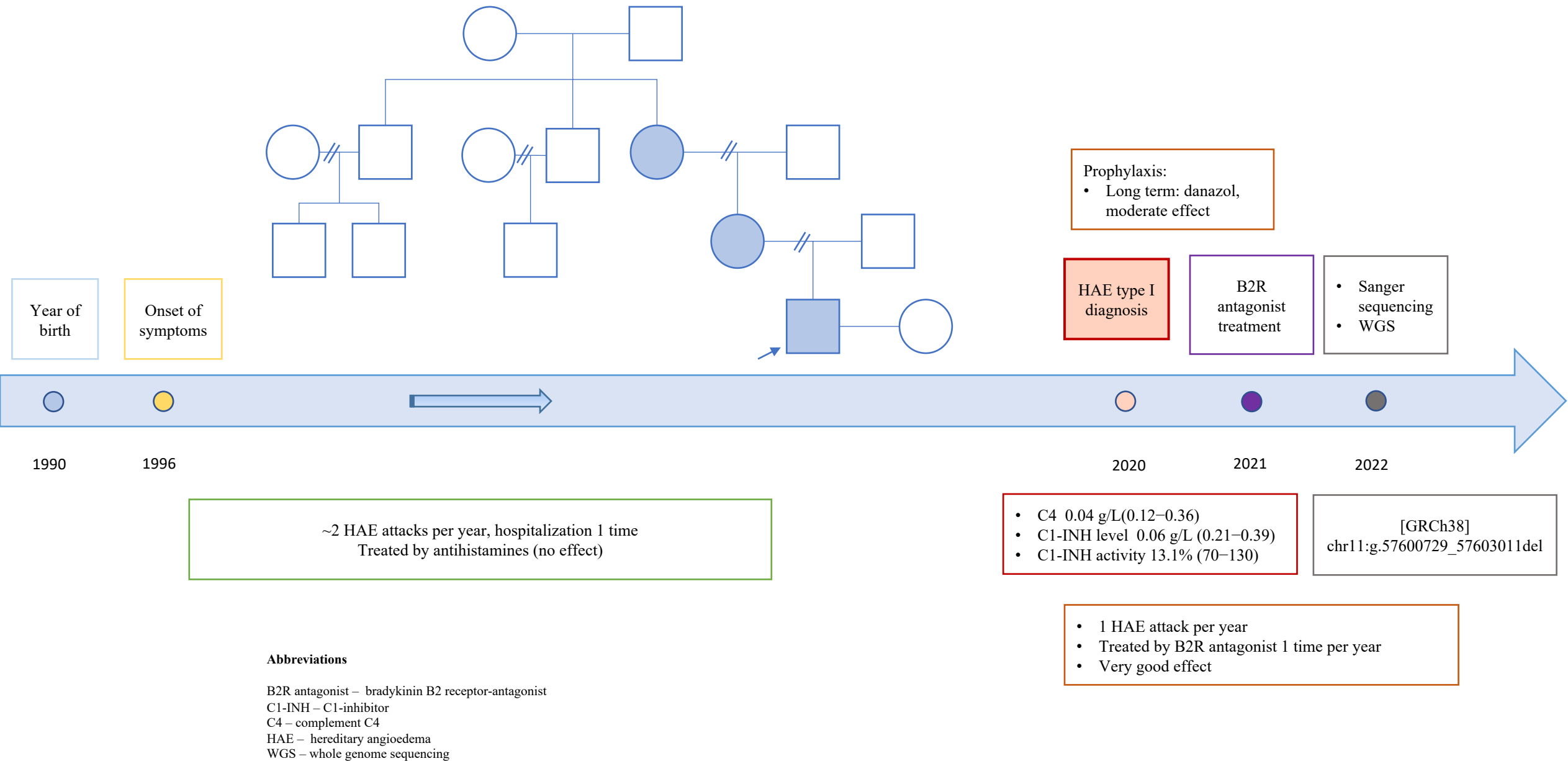
Abbreviations

- B2R antagonist – bradykinin B2 receptor-antagonist
- C1-INH – C1-inhibitor
- C4 – complement C4
- FFP – fresh frozen plasma
- GK – glucocorticoids
- HAE – hereditary angioedema
- WGS – whole genome sequencing

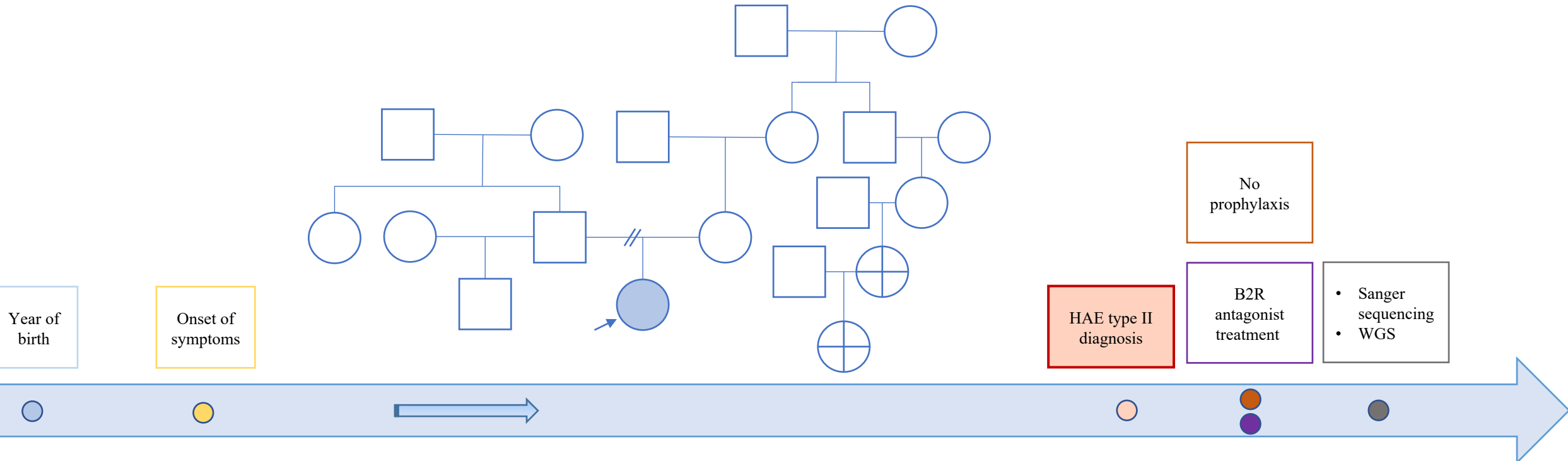
Additional file 1: figure S7. Family tree and timeline presentation of clinical characteristics, therapy, laboratory and genetic test results in a patient with hereditary angioedema. **Patient 7**



Additional file 1: figure S8. Family tree and timeline presentation of clinical characteristics, therapy, laboratory and genetic test results in a patient with hereditary angioedema. **Patient 8**



Additional file 1: figure S9. Family tree and timeline presentation of clinical characteristics, therapy, laboratory and genetic test results in a patient with hereditary angioedema. **Patient 9**



1-2 HAE attacks per year, hospitalization 2 times
Treated by NSAIDs (poor effect), GK and antihistamines (no effect)

- C4 0.11 g/L(0.12–0.36)
- C1-INH level 0.22 g/L (0.21–0.39)
- C1-INH activity 45% (70–130)

No pathogenic variations found

- 1 HAE attack per year
- Treated by B2R antagonist 1 time per year
- Very good effect

Abbreviations

- B2R antagonist – bradykinin B2 receptor-antagonist
- C1-INH – C1-inhibitor
- C4 – complement C4
- GK – glucocorticoids
- HAE – hereditary angioedema
- NSAIDs – non-steroidal anti-inflammatory drugs
- WGS – whole genome sequencing

Additional file 1: figure S10. Family tree and timeline presentation of clinical characteristics, therapy, laboratory and genetic test results in a patient with hereditary angioedema. **Patient 10**

