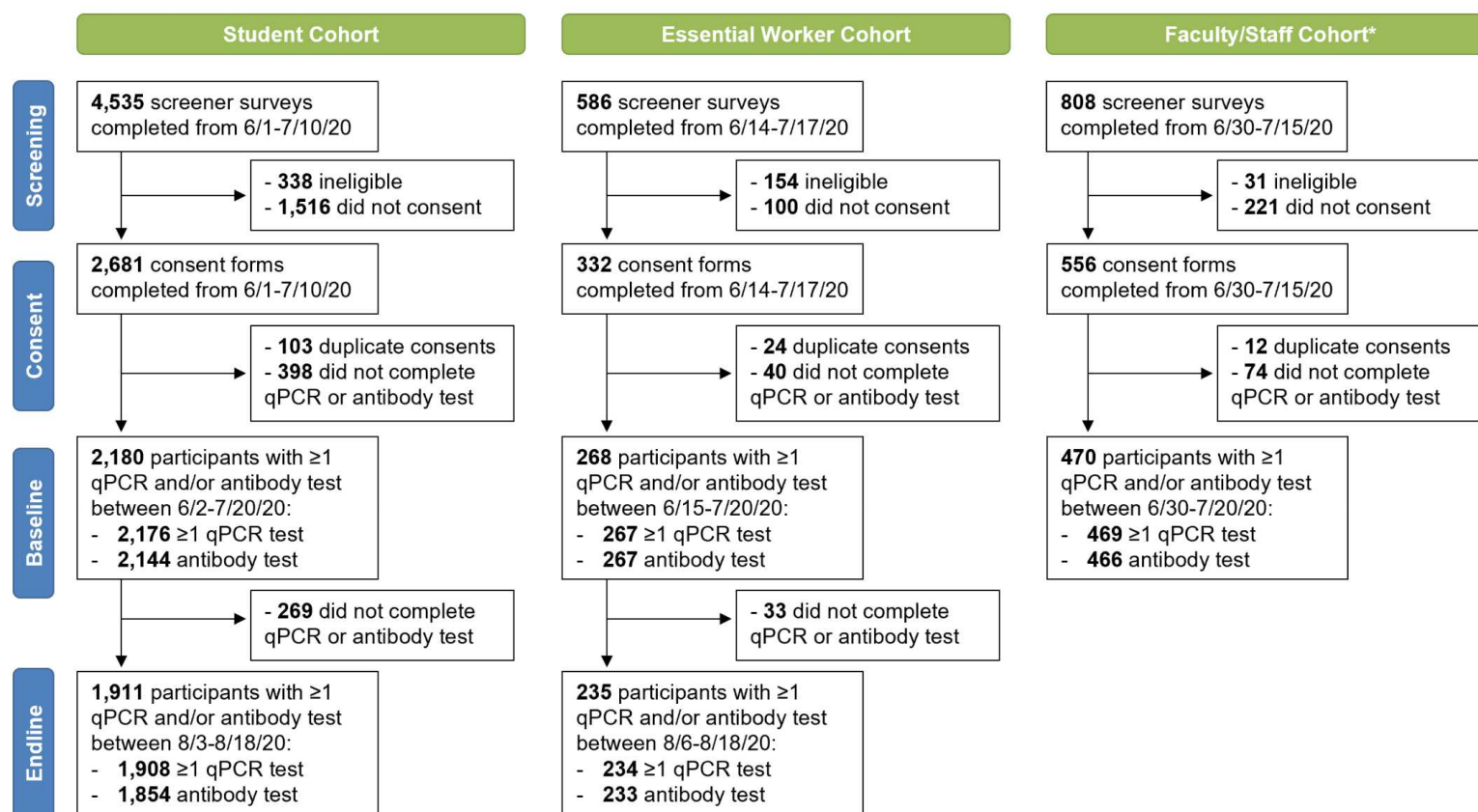


Supplementary Table 1. Eligibility criteria across the Berkeley COVID-19 Safe Campus Study cohorts.

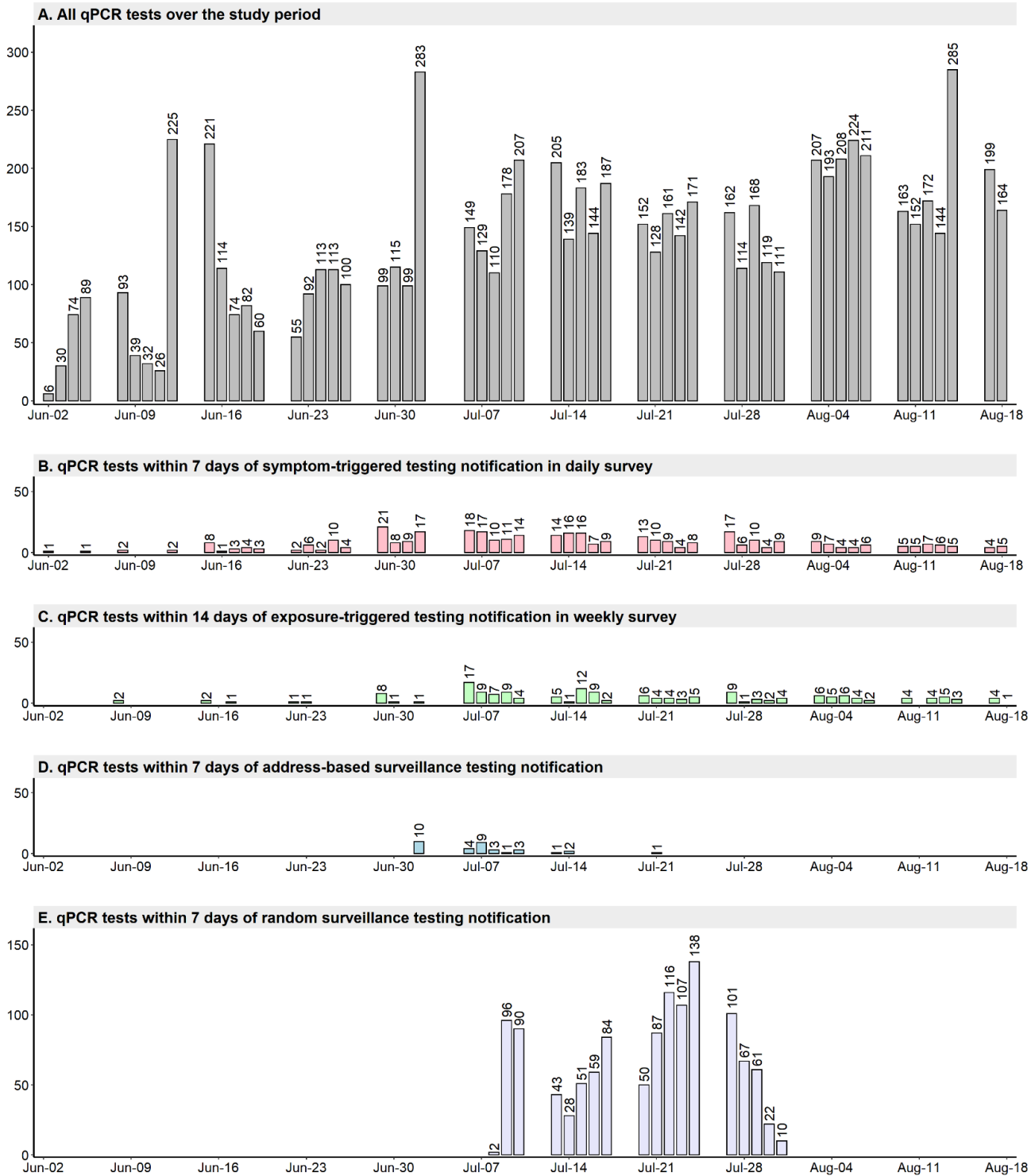
	Student Cohort	Essential Worker Cohort	Faculty/Staff Cohort
Eligibility Criteria	- At least 18 years of age	- At least 18 years of age	- At least 18 years of age
	- Currently enrolled as an undergraduate or graduate student at UC Berkeley (i.e., not graduated in Spring 2020 or incoming for Fall 2020)	- Currently employed in one of the following departments at UC Berkeley: health services, police, facility services or other building management, environmental health and safety, laboratory animal care, athletics, dining, childcare, other residential or student services - Currently working on campus at UC Berkeley <i>or</i> expected to return to work in June 2020	- Currently employed as a faculty member, staff member, or postdoctoral scholar at UC Berkeley - Not already enrolled in the essential workers cohort
	- Primarily residing in Alameda County or Contra Costa Country between 6/1/20-8/31/20	N/A	- Primarily residing in Alameda County or Contra Costa Country between 6/1/20-8/31/20
	- Willing to sign release of information for COVID-19-related medical records	- Willing to sign release of information for COVID-19-related medical records	- Willing to sign release of information for COVID-19-related medical records

Supplementary Figure 1. Flow diagram for the Berkeley COVID-19 Safe Campus Study cohorts.

qPCR: quantitative polymerase chain reaction.

*Faculty/staff cohort not invited for endline testing appointments but could complete follow-up qPCR tests through 8/18/20.

Supplementary Figure 2. qPCR testing over time in the Berkeley COVID-19 Safe Campus Study cohorts.



qPCR: quantitative polymerase chain reaction.
 Note: Panels are not mutually exclusive.