

Supplements

1. SEM control images

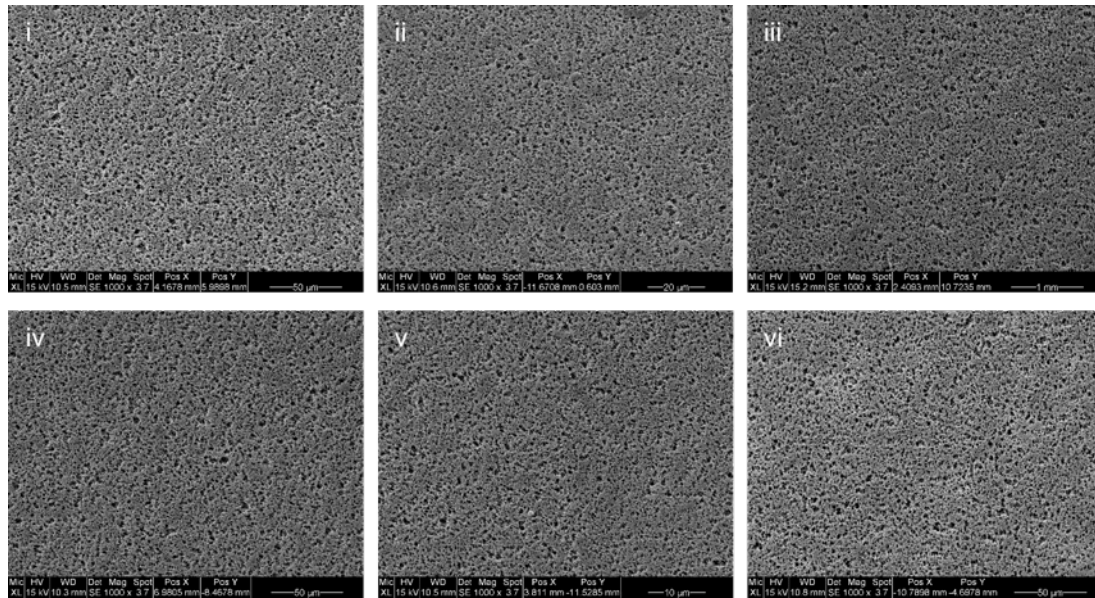


Figure S1 Exemplary negative control images for diatom-content in working reagents; i nitric acid, ii hydrogen peroxide, iii ultrapure water, iv ethanol, v tap water, vi digestion vapor

2. Qualitative SEM analysis of peripheral tissue

Table S1 Qualitative SEM-analysis for diatoms in liver- and kidney tissue of case 1-5; (-) indicates zero diatoms, (+) indicates ≥ 1 diatoms, (++) indicates ≥ 5 diatoms, (+++) indicates ≥ 10 diatoms

case no.	liver	kidney
1	++	+++
2	-	++
3	-	+
4	++	++
5	+++	+++

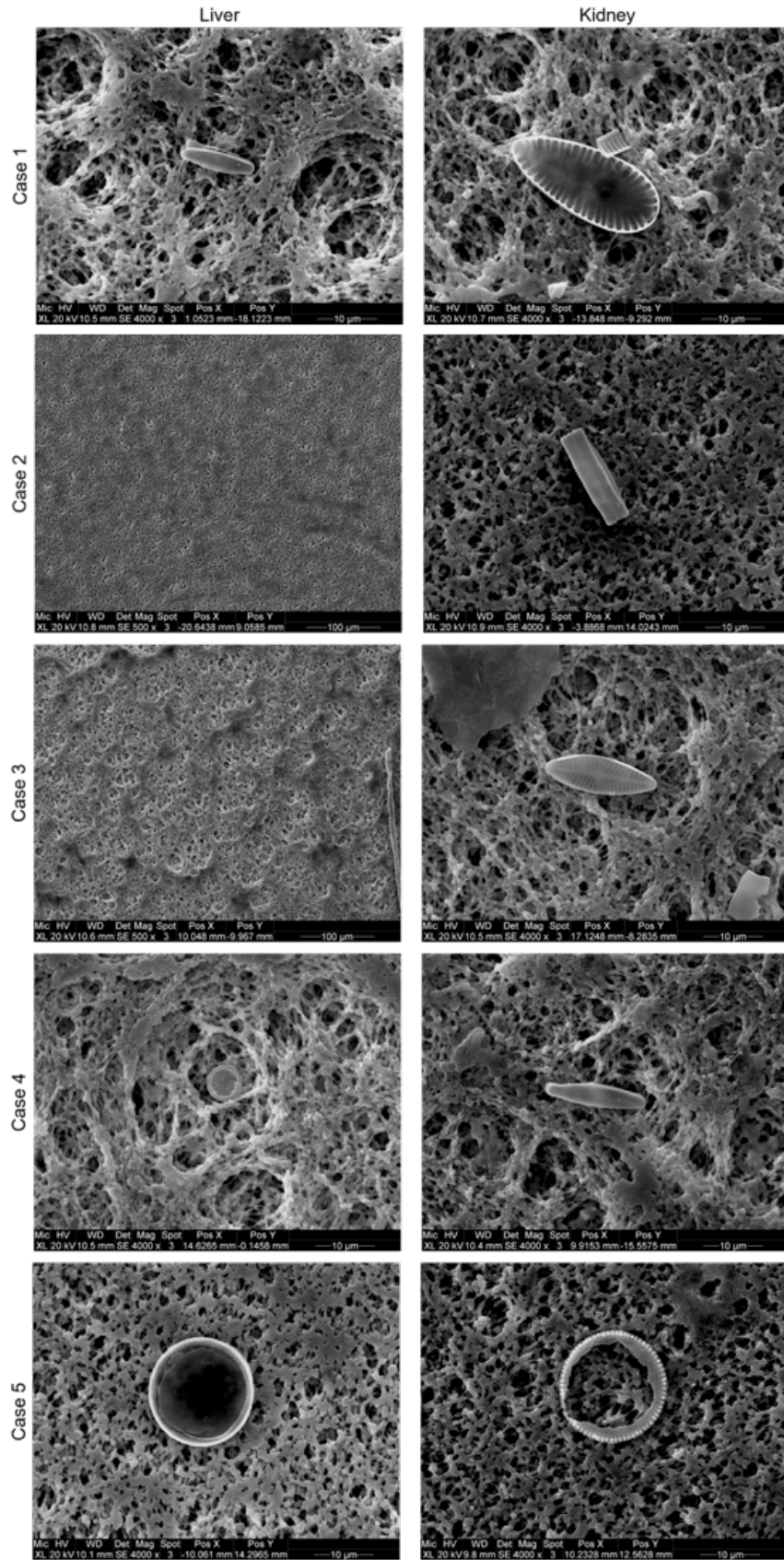


Figure S2 Exemplary images of diatoms in liver- and kidney tissue of cases 1-5.