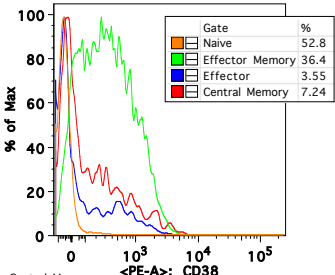
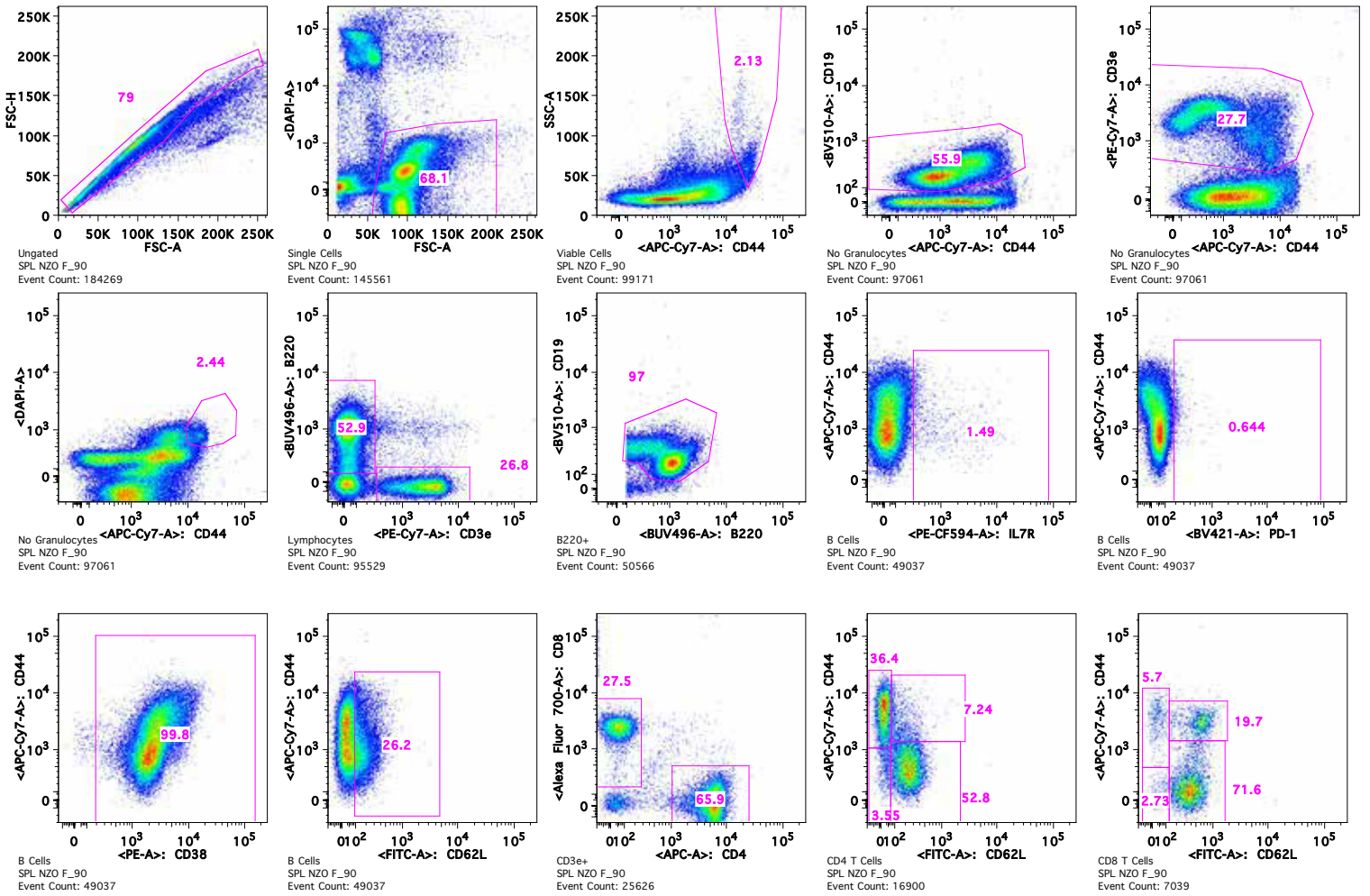
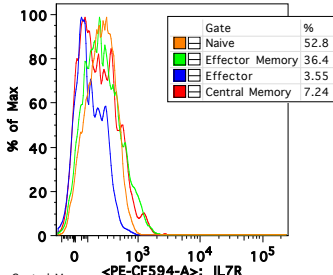


A Flow cytometry strategy for all cell types

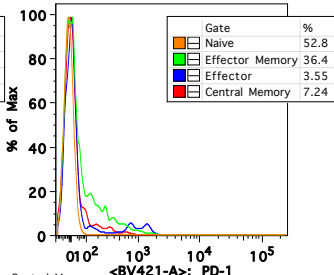
Figure S2



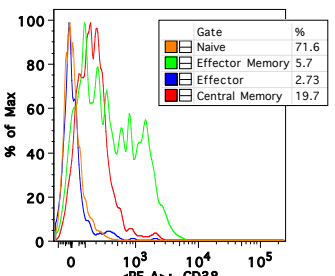
Central Memory
SPL NZO F_90
Event Count: 1...



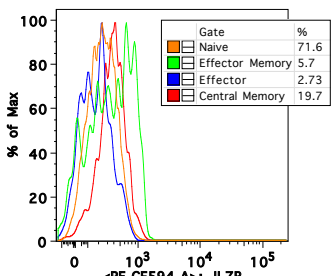
Central Memory
SPL NZO F_90
Event Count: 1...



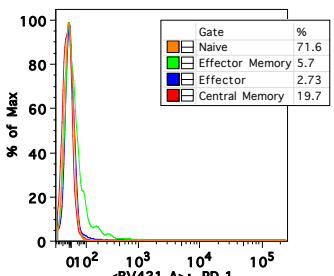
Central Memory
SPL NZO F_90
Event Count: 1...



Central Memory
SPL NZO F_90
Event Count: 1...



Central Memory
SPL NZO F_90
Event Count: 1...



Central Memory
SPL NZO F_90
Event Count: 1...

GateName	Count	Freq. of Parent	Freq. of Viable Cells	Freq. of Lymphocytes
CD4 T Cells	16900	65.9	17	17.7
Central Memory	1224	7.24	1.23	1.28
Effector	600	3.55	0.605	0.628
Effector Memory	6159	36.4	6.21	6.45
Naive	8920	52.8	8.99	9.34
CD8 T Cells	7039	27.5	7.1	7.37
Central Memory	1385	19.7	1.4	1.45
Effector	192	2.73	0.194	0.201
Effector Memory	401	5.7	0.404	0.42
Naive	5039	71.6	5.08	5.27
B Cells	49037	97	49.4	51.3
Monocytes	1532	1.58	1.54	
Granulocytes	2110	2.13	2.13	