

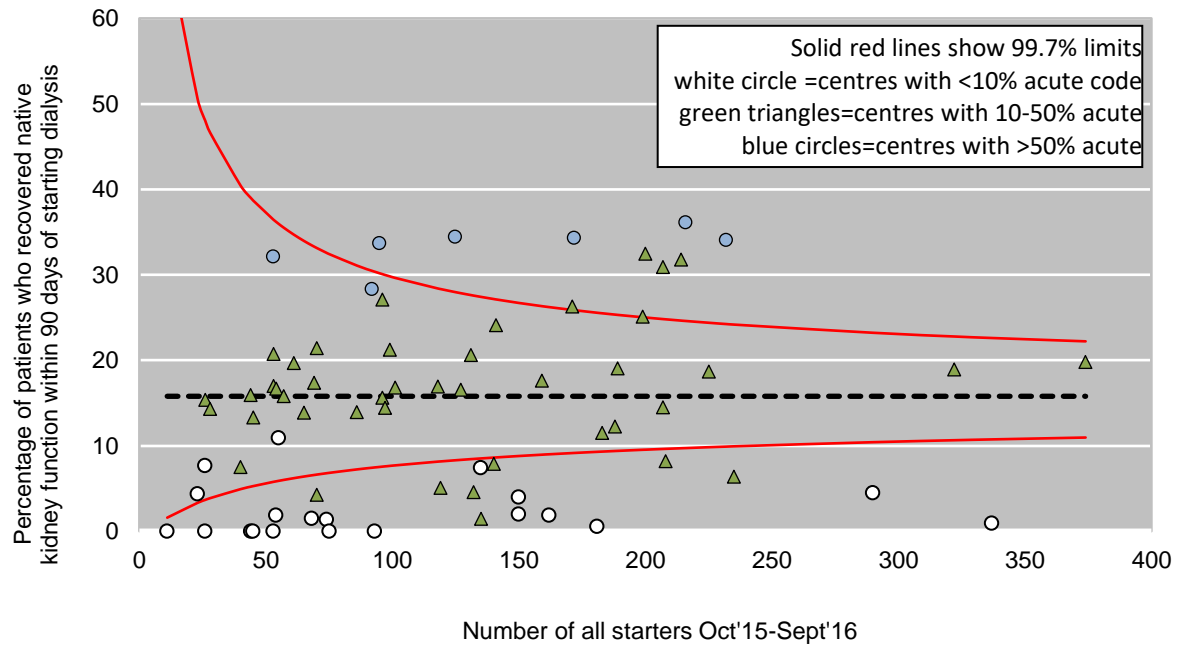
Supplementary material

Supplementary figure 1: Funnel plot displaying the percentage of individuals who recovered native kidney function within 90 days of starting dialysis and the fraction of individuals starting dialysis at each centre coded as receiving acute dialysis on day one.

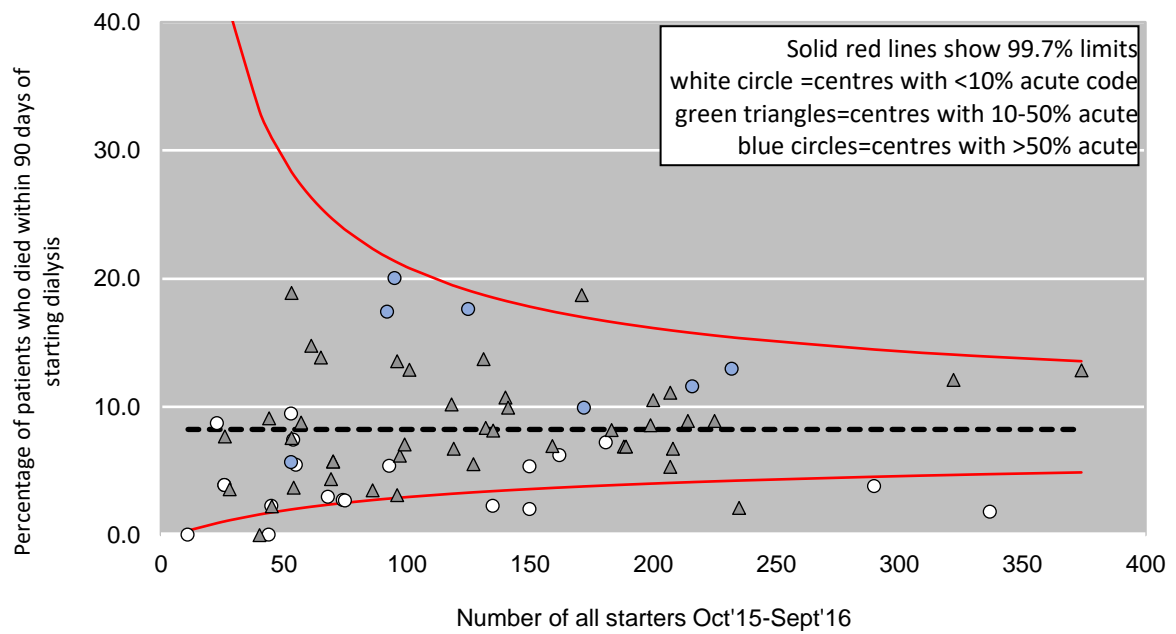
Supplementary figure 2: Funnel plot displaying the percentage of individuals who died within 90 days of starting dialysis and the fraction of individuals starting dialysis at each centre coded as receiving acute dialysis on day one.

Supplementary figure 3: Outcomes 90 days after starting dialysis for the 8,671 individuals reported by the 70 centres to have received their first ever dialysis session between 1st October 2015 and 30th September 2016.

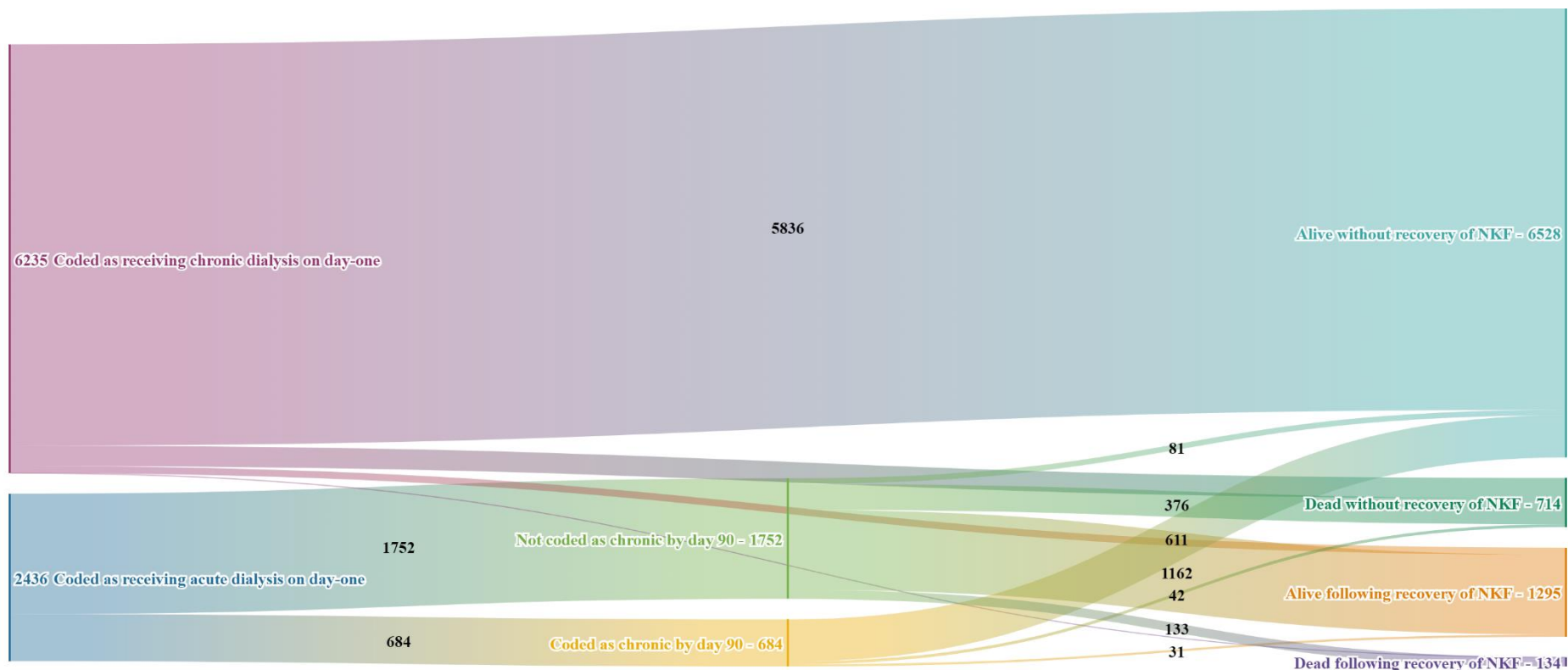
Supplementary table 1: Outcome data for the 5,784 individuals in the 46 centres in the filtered dataset, reported to have received their first ever dialysis session between 1st October 2015 and 30th September 2016, with native kidney function recovery was assigned using a 21-day period in place of the 90 day period employed in the main analysis.



Supplementary figure 1: Funnel plot displaying the percentage of individuals who recovered native kidney function within 90 days of starting dialysis. Data are included for all individuals starting dialysis between 1st October 2015 and 30th September 2016 in 70 UK kidney centres. Recovery of native kidney function classified using the 90-day window. The centre symbols reflect the fraction of individuals starting dialysis at each centre who are coded as receiving acute dialysis on day one: white circles <10%; green triangles 10-50% acute; and blue circles >50% acute.



Supplementary figure 2: Funnel plot displaying the percentage of individuals who died within 90 days of starting dialysis. Data are included for all individuals starting dialysis between 1st October 2015 and 30th September 2016 in 70 UK kidney centres. The centre symbols reflect the fraction of individuals starting dialysis at each centre who are coded as receiving acute dialysis on day one: white circles <10%; green triangles 10-50% acute; and blue circles >50% acute.



Supplementary figure 3: Outcomes 90 days after starting dialysis for the 8,671 individuals reported by the 70 centres to have received their first ever dialysis session between 1st October 2015 and 30th September 2016. NKF recovery was assigned in the following three settings: i) where a treating centre provided a timeline code indicating recovery of NKF and KRT was not restarted within 90 days (irrespective of date of death); ii) where an individual discontinued dialysis and was alive without restarting KRT 90 days later; and iii) where an individual was lost to follow-up, but shown to be alive 90 days after dialysis initiation. All other individuals were assumed to not have recovered NKF. Individuals lost to follow-up, but alive at day-90 were presumed to be alive following recovery of NKF. NKF, native kidney function. Interactive version [here](#).

	Total		Initiated with code indicating kidney failure deemed to be chronic		Initiated dialysis without a code indicating kidney failure deemed to be chronic					
	N	%	N	%	All		Coded as chronic by day 90		Not coded as chronic by day 90	
	N	%	N	%	N	%	N	%	N	%
<i>Total</i>	5784	100.0	3621	62.6	2163	37.4	483	8.4	1680	29.1
Day 90 status arbitrated using a 21-day window:										
<i>Alive without recovery of NKF</i>	3834	66.3	3364	92.9	470	21.7	408	84.5	62	3.7
<i>Alive following recovery of NKF**</i>	1234	21.3	68	1.9	1166	53.9	42	8.7	1124	66.9
<i>Dead following recovery of NKF</i>	155	2.7	4	0.1	151	7.0	1	0.2	150	8.9
<i>Dead without recovery of NKF</i>	561	9.7	185	5.1	376	17.4	32	6.6	344	20.5

Supplementary table 1: Outcome data for the 5,784 individuals in the 46 centres in the filtered dataset, reported to have received their first ever dialysis session between 1st October 2015 and 30th September 2016. NKF recovery was assigned in the following three settings: i) where a treating centre provided a timeline code indicating recovery of NKF and KRT was not restarted within 21 days (irrespective of date of death); ii) where an individual discontinued dialysis and was alive without restarting KRT 21 days later; and iii) where an individual was lost to follow-up, but shown to be alive 21 days after dialysis initiation. All other individuals were assumed to not have recovered NKF. **Individuals lost to follow-up, but alive at day-90 were presumed to be alive following recovery of NKF. KRT, kidney replacement therapy; NKF, native kidney function; IQR, inter-quartile range.