

The rising burden of noncommunicable diseases in the Americas and the impact of population aging: A secondary analysis of available data

Hambleton IR, PhD¹
Caixeta, R²
Jeyaseelan SM, PhD³
Luciani, S²
Hennis AJ²

SUPPLEMENTARY INFORMATION
VERSION 1.1 (created Jan 20, 2023)

Table of Contents

PART ONE. DEMOGRAPHIC INDICATORS FOR WOMEN AND MEN SEPARATELY	4
TABLE S1. Population size and proportion of women aged 70 and older among 33 countries of the Americas in 2000 and in 2020....	4
TABLE S2. Population size and proportion of men aged 70 and older among 33 countries of the Americas in 2000 and in 2020	5
PART TWO. DECOMPOSITION OF REASONS FOR DEATHS/DALYs BETWEEN 2000 and 2019, FOR WOMEN AND MEN SEPARATELY	6
FIGURE S3. Contribution of changes in population growth, population aging, and rates of age-specific mortality to the percentage change in mortality due to NCDs, 2000 to 2019. Women and men combined.	6
TABLE S3. Contribution of changes in population growth, population aging, and rates of age-specific mortality to the percentage change in mortality due to NCDs, 2000 to 2019. Women and Men combined.	7
FIGURE S4. Contribution of changes in population growth, population aging, and rates of age-specific morbidity to the percentage change in DALYs due to NCDs, 2000 to 2019. Women and men combined.	8
TABLE S4. Contribution of changes in population growth, population aging, and rates of age-specific morbidity to the percentage change in DALYs due to NCDs, 2000 to 2019. Women and Men combined.	9
FIGURE S5. Contribution of changes in population growth, population aging, and rates of age-specific mortality to the percentage change in mortality due to NCDs, 2000 to 2019. Women only.	10
TABLE S5. Contribution of changes in population growth, population aging, and rates of age-specific mortality to the percentage change in mortality due to NCDs, 2000 to 2019. Women only.	11
FIGURE S6. Contribution of changes in population growth, population aging, and rates of age-specific DALYs to the percentage change in DALYs due to NCDs, 2000 to 2019. Women only.	12
TABLE S6. Contribution of changes in population growth, population aging, and rates of age-specific morbidity to the percentage change in DALYs due to NCDs, 2000 to 2019. Women only.	13
FIGURE S7. Contribution of changes in population growth, population aging, and rates of age-specific mortality to the percentage change in mortality due to NCDs, 2000 to 2019. Men only.	14
TABLE S7. Contribution of changes in population growth, population aging, and rates of age-specific mortality to the percentage change in mortality due to NCDs, 2000 to 2019. Men only.	15
FIGURE S8. Contribution of changes in population growth, population aging, and rates of age-specific DALYs to the percentage change in DALYs due to NCDs, 2000 to 2019. Men only.	16
TABLE S8. Contribution of changes in population growth, population aging, and rates of age-specific morbidity to the percentage change in DALYs due to NCDs, 2000 to 2019. Men only.	17
PART THREE. DECOMPOSITION OF REASONS FOR DEATHS/DALYs BETWEEN 2000 and 2019 INCORPORATING UNCERTAINTY, FOR WOMEN AND MEN SEPARATELY	18

FIGURE S9a. Contribution of changes in population growth, population aging, and rates of age-specific morbidity to the percentage change in deaths due to NCDs, 2000 to 2019, with associated 95% Uncertainty Intervals for overall percentage change in deaths. Women and Men combined. Overall change in deaths based on point estimate.....	18
FIGURE S9b. Contribution of changes in population growth, population aging, and rates of age-specific morbidity to the percentage change in deaths due to NCDs, 2000 to 2019, with associated 95% Uncertainty Intervals for overall percentage change in deaths. Women and Men combined. Overall change in deaths based on lower bound of uncertainty interval.....	19
FIGURE S9d. Contribution of changes in population growth, population aging, and rates of age-specific morbidity to the percentage change in DALYs due to NCDs, 2000 to 2019, with associated 95% Uncertainty Intervals for overall percentage change in DALYs. Women and Men combined. Overall change in DALYs based on point estimate.....	21
FIGURE S9e. Contribution of changes in population growth, population aging, and rates of age-specific morbidity to the percentage change in DALYs due to NCDs, 2000 to 2019, with associated 95% Uncertainty Intervals for overall percentage change in DALYs. Women and Men combined. Overall change in DALYs based on lower bound of uncertainty interval.....	22
FIGURE S9f. Contribution of changes in population growth, population aging, and rates of age-specific morbidity to the percentage change in DALYs due to NCDs, 2000 to 2019, with associated 95% Uncertainty Intervals for overall percentage change in DALYs. Women and Men combined. Overall change in DALYs based on upper bound of uncertainty interval.	23
TABLE S9. Deaths/DALYs in 2000 and in 2019, and percentage change in deaths/DALYs between 2000 and 2019, with associated 95% Uncertainty Intervals. Women and Men combined.	24
FIGURE S10a. Contribution of changes in population growth, population aging, and rates of age-specific morbidity to the percentage change in deaths due to NCDs, 2000 to 2019, with associated 95% Uncertainty Intervals for overall percentage change in deaths. Women only. Overall change in deaths based on point estimate.	26
FIGURE S10b. Contribution of changes in population growth, population aging, and rates of age-specific morbidity to the percentage change in deaths due to NCDs, 2000 to 2019, with associated 95% Uncertainty Intervals for overall percentage change in deaths. Women only. Overall change in deaths based on lower bound of uncertainty interval.	27
FIGURE S10d. Contribution of changes in population growth, population aging, and rates of age-specific morbidity to the percentage change in DALYs due to NCDs, 2000 to 2019, with associated 95% Uncertainty Intervals for overall percentage change in DALYs. Women only. Overall change in DALYs based on point estimate.....	29
FIGURE S10e. Contribution of changes in population growth, population aging, and rates of age-specific morbidity to the percentage change in DALYs due to NCDs, 2000 to 2019, with associated 95% Uncertainty Intervals for overall percentage change in DALYs. Women only. Overall change in DALYs based on lower bound of uncertainty interval.	30
FIGURE S10f. Contribution of changes in population growth, population aging, and rates of age-specific morbidity to the percentage change in DALYs due to NCDs, 2000 to 2019, with associated 95% Uncertainty Intervals for overall percentage change in DALYs. Women only. Overall change in DALYs based on upper bound of uncertainty interval.....	31
TABLE S10. Deaths/DALYs in 2000 and in 2019, and percentage change in deaths/DALYs between 2000 and 2019, with associated 95% Uncertainty Intervals. Women only.....	32
FIGURE S11a. Contribution of changes in population growth, population aging, and rates of age-specific morbidity to the percentage change in deaths due to NCDs, 2000 to 2019, with associated 95% Uncertainty Intervals for overall percentage change in deaths. Men only. Overall change in deaths based on point estimate.....	34
FIGURE S11b. Contribution of changes in population growth, population aging, and rates of age-specific morbidity to the percentage change in deaths due to NCDs, 2000 to 2019, with associated 95% Uncertainty Intervals for overall percentage change in deaths. Men only. Overall change in deaths based on lower bound of uncertainty interval.....	35
FIGURE S11d. Contribution of changes in population growth, population aging, and rates of age-specific morbidity to the percentage change in DALYs due to NCDs, 2000 to 2019, with associated 95% Uncertainty Intervals for overall percentage change in DALYs. Men only. Overall change in DALYs based on point estimate.....	37

FIGURE S11e. Contribution of changes in population growth, population aging, and rates of age-specific morbidity to the percentage change in DALYs due to NCDs, 2000 to 2019, with associated 95% Uncertainty Intervals for overall percentage change in DALYs. Men only. Overall change in DALYs based on lower bound of uncertainty interval..... 38

FIGURE S11f. Contribution of changes in population growth, population aging, and rates of age-specific morbidity to the percentage change in DALYs due to NCDs, 2000 to 2019, with associated 95% Uncertainty Intervals for overall percentage change in DALYs. Men only. Overall change in DALYs based on upper bound of uncertainty interval..... 39

TABLE S11. Deaths/DALYs in 2000 and in 2019, and percentage change in deaths/DALYs between 2000 and 2019, with associated 95% Uncertainty Intervals. Men only. 40

PART ONE. DEMOGRAPHIC INDICATORS FOR WOMEN AND MEN SEPARATELY

TABLE S1. Population size and proportion of women aged 70 and older among 33 countries of the Americas in 2000 and in 2020

Country	Population in 2020	Percent of population aged 70+		Annual growth rate (2000 to 2020)	
		2000	2020	All ages	Older adults (70+)
AMERICAS	516,083,232	6.6	8.7	1.03	2.44
NORTH AMERICA	186,226,624	10.7	12.7	0.81	1.67
Canada	19,009,980	10.4	13.6	1.04	2.38
United States	167,216,640	10.7	12.6	0.78	1.59
CENTRAL AMERICA	25,757,460	3.0	4.6	1.67	3.71
Belize	199,860	2.6	3.1	2.44	3.24
Costa Rica	2,549,038	4.0	7.4	1.28	4.37
El Salvador	3,449,777	3.6	6.4	0.61	3.42
Guatemala	9,088,458	2.6	3.5	2.13	3.72
Honduras	4,955,728	2.6	3.5	2.03	3.50
Nicaragua	3,359,705	2.7	3.9	1.36	3.17
Panama	2,154,888	3.8	6.2	1.80	4.23
ANDEAN AREA	71,576,824	3.4	5.9	1.22	3.96
Bolivia	5,815,010	3.7	5.6	1.65	3.76
Colombia	25,898,320	3.6	6.4	1.24	4.11
Ecuador	8,819,233	3.4	5.3	1.67	3.83
Peru	16,593,240	3.4	6.0	1.12	4.00
Venezuela	14,451,011	3.1	5.6	0.91	3.78
SOUTHERN CONE	38,140,736	7.2	9.0	1.02	2.17
Argentina	23,146,632	7.9	9.2	0.99	1.78
Chile	9,690,540	5.9	9.3	1.09	3.36
Paraguay	3,508,170	3.2	4.6	1.46	3.31
Uruguay	1,795,391	10.8	13.3	0.23	1.27
LATIN CARIBBEAN	16,908,932	4.6	6.9	0.91	2.93
Cuba	5,703,148	7.4	11.9	0.11	2.52
Dominican Rep	5,429,698	3.0	5.2	1.25	4.09
Haiti	5,776,088	2.7	3.5	1.48	2.90
NON-LATIN CARIBBEAN	3,487,776	5.2	6.6	0.59	1.82
Antigua & Barbuda	50,659	4.8	6.1	1.14	2.41
Bahamas	202,155	4.0	5.3	1.40	2.86
Barbados	148,287	10.1	12.6	0.25	1.33
Grenada	55,853	6.5	7.3	0.39	0.99
Guyana	391,010	2.8	4.7	0.21	2.80
Jamaica	1,491,520	5.8	6.2	0.56	0.90
Saint Lucia	93,207	5.5	7.1	0.77	2.05
St Vincent & Gren	54,729	5.4	6.7	0.11	1.19
Suriname	291,812	3.7	5.4	1.12	3.12
Trinidad & Tobago	708,544	4.9	8.1	0.54	3.00
Brazil	108,123,624	3.7	7.0	1.02	4.15
Mexico	65,861,272	3.7	5.3	1.34	3.08

TABLE S2. Population size and proportion of men aged 70 and older among 33 countries of the Americas in 2000 and in 2020

Country	Population in 2020	Percent of population aged 70+		Annual growth rate (2000 to 2020)	
		2000	2020	All ages	Older adults (70+)
AMERICAS	501,912,736	4.6	6.8	1.02	2.93
NORTH AMERICA	182,518,176	7.2	10.0	0.85	2.50
Canada	18,732,176	7.2	11.2	1.06	3.25
United States	163,786,016	7.2	9.9	0.83	2.41
CENTRAL AMERICA	24,979,980	2.5	3.7	1.65	3.52
Belize	197,761	2.4	3.2	2.31	3.76
Costa Rica	2,545,076	3.2	6.1	1.23	4.55
El Salvador	3,036,424	3.0	5.1	0.34	2.96
Guatemala	8,827,109	2.3	2.9	2.17	3.30
Honduras	4,948,880	2.1	2.8	2.07	3.50
Nicaragua	3,264,849	2.0	2.9	1.32	3.13
Panama	2,159,880	3.4	5.2	1.73	3.89
ANDEAN AREA	70,029,944	2.7	4.8	1.18	4.03
Bolivia	5,858,019	3.0	4.6	1.62	3.78
Colombia	24,984,564	2.9	5.1	1.26	4.06
Ecuador	8,823,827	2.9	4.4	1.63	3.77
Peru	16,378,606	2.6	5.2	1.08	4.56
Venezuela	13,984,932	2.4	4.3	0.71	3.57
SOUTHERN CONE	36,777,512	4.7	6.2	1.06	2.39
Argentina	22,049,148	5.1	6.1	1.04	1.92
Chile	9,425,669	4.0	6.7	1.11	3.70
Paraguay	3,624,360	2.5	3.9	1.47	3.68
Uruguay	1,678,336	7.0	8.1	0.22	0.96
LATIN CARIBBEAN	16,668,119	4.0	5.7	0.89	2.61
Cuba	5,623,468	6.3	9.8	0.07	2.31
Dominican Rep	5,418,206	2.9	4.4	1.22	3.41
Haiti	5,626,445	2.2	2.7	1.50	2.58
NON-LATIN CARIBBEAN	3,431,711	4.2	5.6	0.58	2.02
Antigua & Barbuda	47,269	4.3	5.6	1.40	2.67
Bahamas	191,093	2.7	4.1	1.37	3.43
Barbados	139,084	7.3	10.3	0.32	2.04
Grenada	56,666	4.5	5.4	0.51	1.42
Guyana	395,549	2.4	3.9	0.31	2.74
Jamaica	1,469,641	5.1	5.9	0.54	1.19
Saint Lucia	90,422	4.9	6.8	0.81	2.46
St Vincent & Gren	56,218	3.9	6.1	0.17	2.43
Suriname	294,822	3.1	3.6	1.07	1.90
Trinidad & Tobago	690,947	3.5	6.3	0.46	3.46
Brazil	104,435,784	2.8	5.2	0.94	4.01
Mexico	63,071,476	3.0	4.4	1.31	3.22

PART TWO. DECOMPOSITION OF REASONS FOR DEATHS/DALYs BETWEEN 2000 and 2019, FOR WOMEN AND MEN SEPARATELY

FIGURE S3. Contribution of changes in population growth, population aging, and rates of age-specific mortality to the percentage change in mortality due to NCDs, 2000 to 2019. Women and men combined.

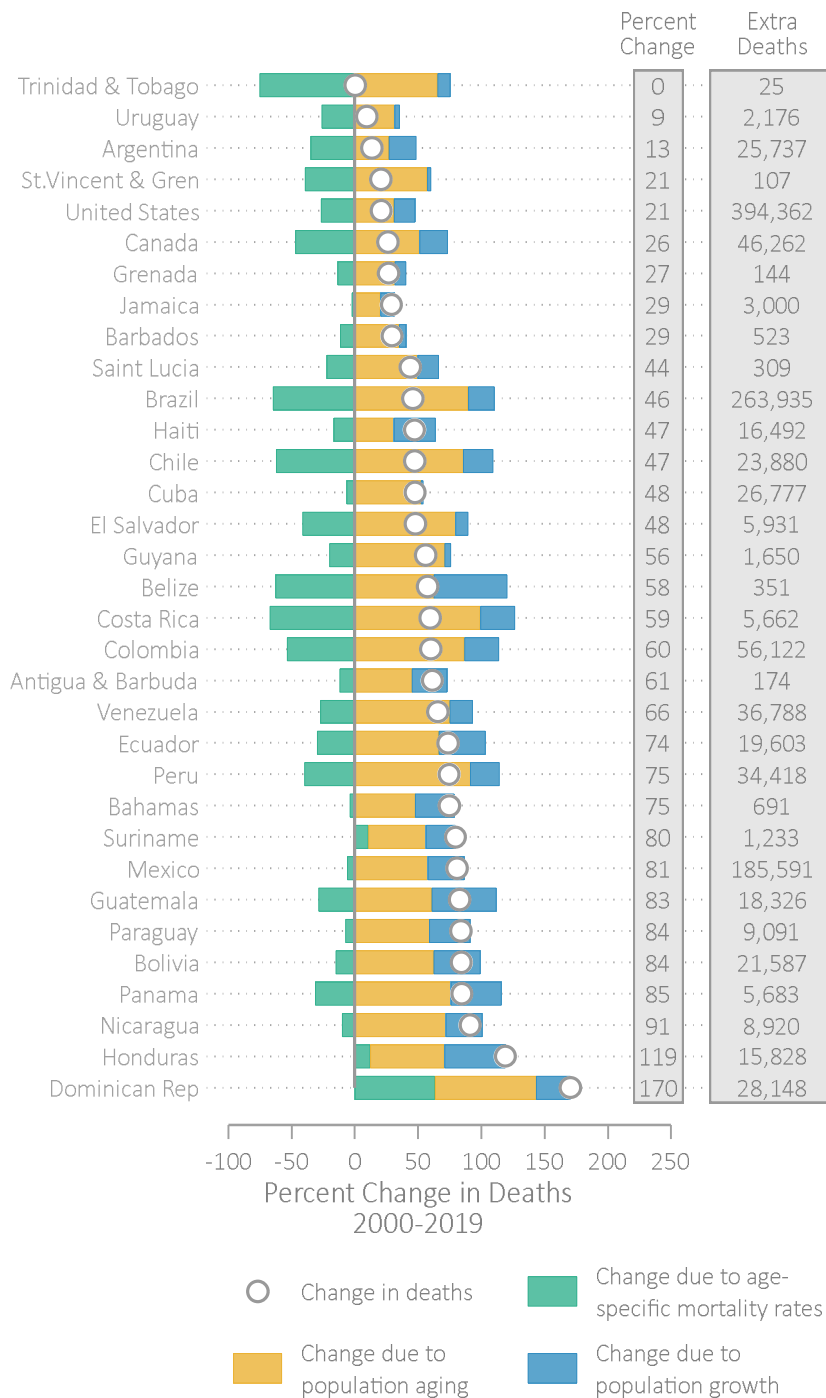


TABLE S3. Contribution of changes in population growth, population aging, and rates of age-specific mortality to the percentage change in mortality due to NCDs, 2000 to 2019. Women and Men combined.

Country	(1) Deaths (2000)	(2) Deaths (2019)	(3)	(4)	(5)	(6)	(7)	(8)
Antigua & Barbuda	285	460	364	493	61.3	27.8	45.4	-11.9
Argentina	191,142	216,880	232,147	283,691	13.5	21.5	27.0	-35.0
Bahamas	925	1,617	1,209	1,652	74.7	30.7	47.9	-3.8
Barbados	1,785	2,309	1,887	2,512	29.3	5.7	35.0	-11.4
Belize	609	961	962	1,343	57.6	57.8	62.5	-62.7
Bolivia	25,649	47,236	35,079	51,082	84.2	36.8	62.4	-15.0
Brazil	574,993	838,929	694,272	1,210,335	45.9	20.7	89.8	-64.6
Canada	176,115	222,378	215,397	305,457	26.3	22.3	51.1	-47.2
Chile	50,561	74,442	62,457	105,846	47.2	23.5	85.8	-62.1
Colombia	93,466	149,588	118,724	199,751	60.0	27.0	86.7	-53.7
Costa Rica	9,516	15,179	12,123	21,553	59.5	27.4	99.1	-67.0
Cuba	56,256	83,033	57,303	86,749	47.6	1.9	52.3	-6.6
Dominican Rep	16,526	44,674	20,949	34,234	170.3	26.8	80.4	63.2
Ecuador	26,597	46,201	36,439	54,128	73.7	37.0	66.5	-29.8
El Salvador	12,361	18,292	13,548	23,410	48.0	9.6	79.8	-41.4
Grenada	538	682	586	756	26.8	8.9	31.5	-13.7
Guatemala	22,099	40,426	33,349	46,787	82.9	50.9	60.8	-28.8
Guyana	2,950	4,601	3,092	5,190	55.9	4.8	71.1	-20.0
Haiti	34,953	51,445	46,513	57,309	47.2	33.1	30.9	-16.8
Honduras	13,302	29,131	19,720	27,529	119.0	48.2	58.7	12.0
Jamaica	10,373	13,373	11,520	13,615	28.9	11.1	20.2	-2.3
Mexico	229,475	415,067	296,010	428,494	80.9	29.0	57.7	-5.9
Nicaragua	9,794	18,714	12,645	19,674	91.1	29.1	71.8	-9.8
Panama	6,725	12,409	9,424	14,527	84.5	40.1	75.9	-31.5
Paraguay	10,837	19,928	14,341	20,731	83.9	32.3	59.0	-7.4
Peru	46,180	80,598	56,739	98,949	74.5	22.9	91.4	-39.7
Saint Lucia	708	1,018	826	1,176	43.8	16.6	49.5	-22.4
St Vincent & Gren	521	629	534	834	20.7	2.6	57.4	-39.3
Suriname	1,549	2,782	1,912	2,614	79.6	23.4	45.4	10.8
Trinidad & Tobago	6,651	6,677	7,322	11,672	0.4	10.1	65.4	-75.1
United States	1,885,073	2,279,436	2,201,943	2,783,532	20.9	16.8	30.9	-26.7
Uruguay	23,004	25,180	23,988	31,210	9.5	4.3	31.4	-26.2
Venezuela	56,143	92,931	66,176	108,330	65.5	17.9	75.1	-27.4

(3) Expected deaths due to population growth alone (4) Expected deaths due to population aging (5) Percent change in deaths (2000 to 2019) (6) Percent change due to growth (7) Percent change due to aging (8) Percent change due to age-stratified rate change

FIGURE S4. Contribution of changes in population growth, population aging, and rates of age-specific morbidity to the percentage change in DALYs due to NCDs, 2000 to 2019. Women and men combined.

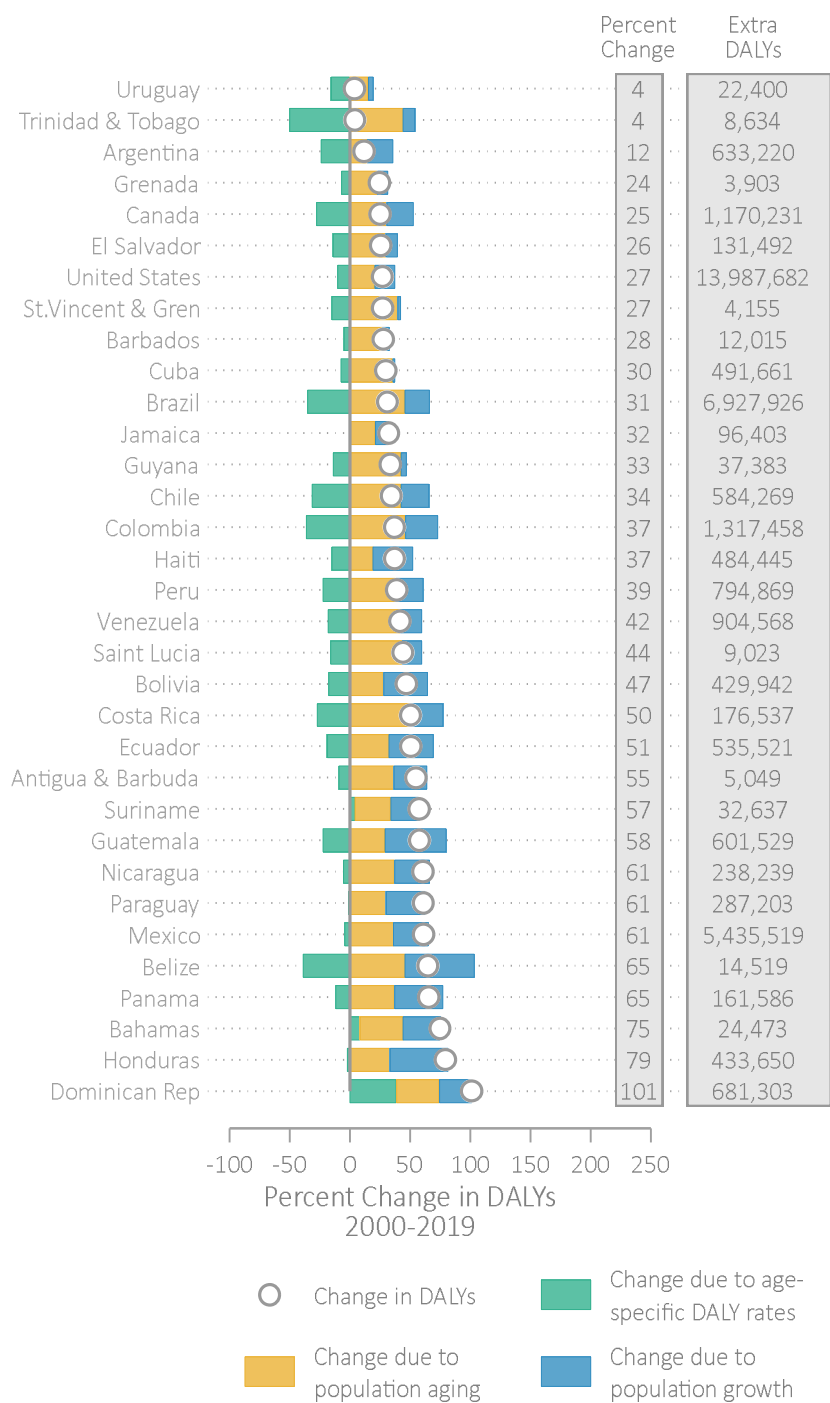


TABLE S4. Contribution of changes in population growth, population aging, and rates of age-specific morbidity to the percentage change in DALYs due to NCDs, 2000 to 2019. Women and Men combined.

Country	(1) DALYs (2000)	(2) DALYs (2019)	(3)	(4)	(5)	(6)	(7)	(8)
Antigua & Barbuda	9,189	14,238	11,741	15,089	55.0	27.8	36.4	-9.3
Argentina	5,394,689	6,027,909	6,552,010	7,324,111	11.7	21.5	14.3	-24.0
Bahamas	32,688	57,162	42,717	54,446	74.9	30.7	35.9	8.3
Barbados	43,092	55,107	45,554	57,287	27.9	5.7	27.2	-5.1
Belize	22,442	36,961	35,422	45,712	64.7	57.8	45.9	-39.0
Bolivia	915,367	1,345,310	1,251,886	1,508,105	47.0	36.8	28.0	-17.8
Brazil	22,262,443	29,190,370	26880651	37042975	31.1	20.7	45.6	-35.3
Canada	4,644,639	5,814,871	5,680,614	7,102,123	25.2	22.3	30.6	-27.7
Chile	1,698,492	2,282,762	2,098,106	2,817,319	34.4	23.5	42.3	-31.5
Colombia	3,562,572	4,880,031	4,525,311	6,170,748	37.0	27.0	46.2	-36.2
Costa Rica	350,424	526,962	446,396	621,957	50.4	27.4	50.1	-27.1
Cuba	1,649,266	2,140,928	1,679,959	2,266,672	29.8	1.9	35.6	-7.6
Dominican Rep	673,528	1,354,832	853,821	1,096,047	101.2	26.8	36.0	38.4
Ecuador	1,057,044	1,592,565	1,448,193	1,791,720	50.7	37.0	32.5	-18.8
El Salvador	513,299	644,792	562,609	717,090	25.6	9.6	30.1	-14.1
Grenada	15,957	19,861	17,379	20,969	24.5	8.9	22.5	-6.9
Guatemala	1,041,662	1,643,192	1,571,913	1,876,549	57.7	50.9	29.2	-22.4
Guyana	111,667	149,050	117,059	164,359	33.5	4.8	42.4	-13.7
Haiti	1,306,010	1,790,456	1,737,953	1,988,790	37.1	33.1	19.2	-15.2
Honduras	546,956	980,606	810,812	992,190	79.3	48.2	33.2	-2.1
Jamaica	298,319	394,722	331,309	394,133	32.3	11.1	21.1	0.2
Mexico	8,895,571	14,331,091	11474812	14698634	61.1	29.0	36.2	-4.1
Nicaragua	391,884	630,124	506,001	651,014	60.8	29.1	37.0	-5.3
Panama	247,326	408,913	346,580	438,033	65.3	40.1	37.0	-11.8
Paraguay	470,717	757,921	622,940	764,389	61.0	32.3	30.0	-1.4
Peru	2,051,114	2,845,983	2,520,136	3,304,073	38.8	22.9	38.2	-22.3
Saint Lucia	20,510	29,533	23,920	32,822	44.0	16.6	43.4	-16.0
St Vincent & Gren	15,336	19,491	15,736	21,815	27.1	2.6	39.6	-15.2
Suriname	56,846	89,483	70,174	87,009	57.4	23.4	29.6	4.4
Trinidad & Tobago	210,019	218,653	231,202	323,903	4.1	10.1	44.1	-50.1
United States	51,759,797	65,747,479	60460327	71165703	27.0	16.8	20.7	-10.5
Uruguay	572,110	594,510	596,581	684,625	3.9	4.3	15.4	-15.8
Venezuela	2,169,434	3,074,003	2,557,129	3,466,422	41.7	17.9	41.9	-18.1

(3) Expected DALYs due to population growth alone (4) Expected DALYs due to population aging (5) Percent change in DALYs (2000 to 2019) (6) Percent change due to growth (7) Percent change due to aging (8) Percent change due to age-stratified rate change

FIGURE S5. Contribution of changes in population growth, population aging, and rates of age-specific mortality to the percentage change in mortality due to NCDs, 2000 to 2019. Women only.

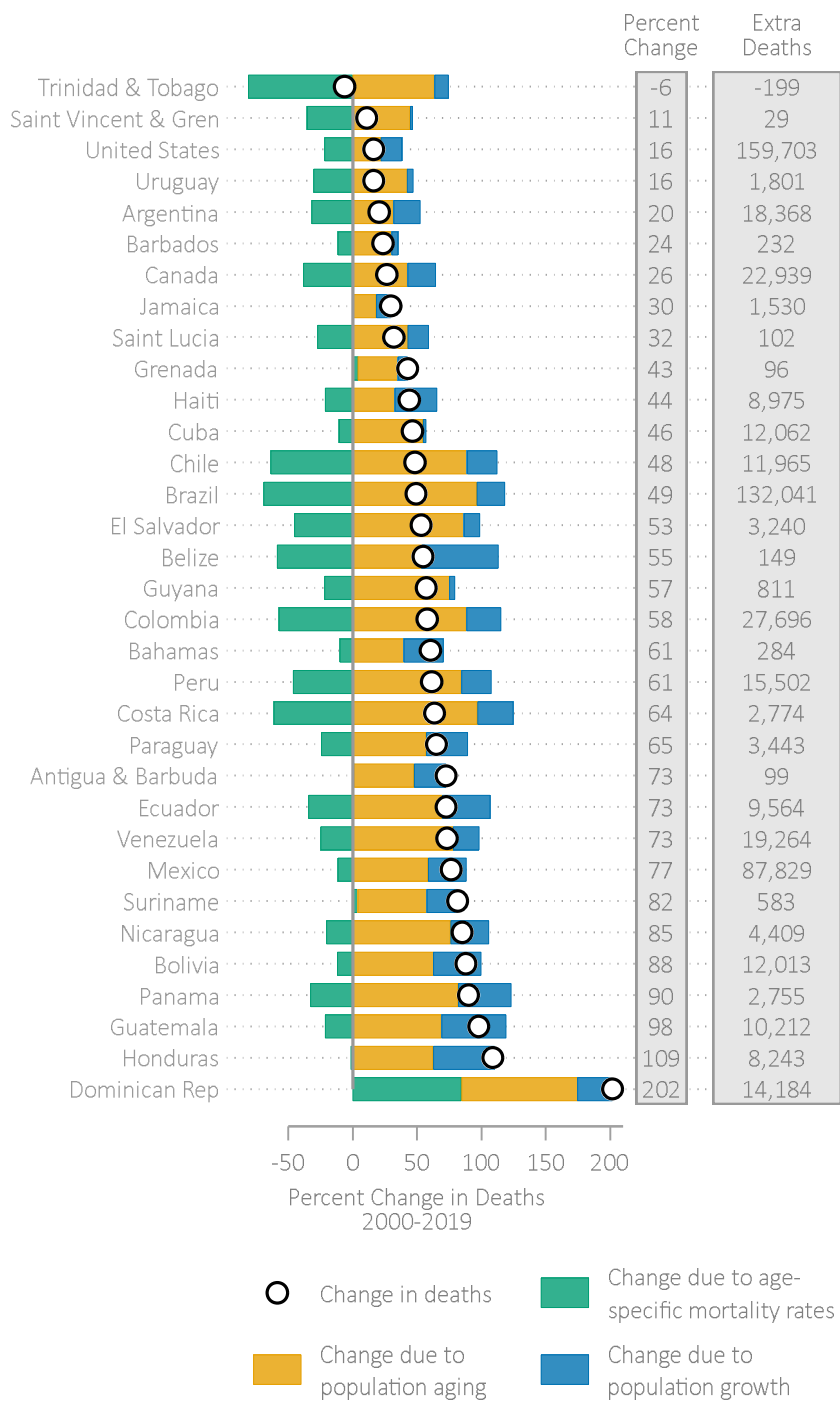


TABLE S5. Contribution of changes in population growth, population aging, and rates of age-specific mortality to the percentage change in mortality due to NCDs, 2000 to 2019. Women only.

Country	(1) Deaths (2000)	(2) Deaths (2019)	(3)	(4)	(5)	(6)	(7)	(8)
Antigua & Barbuda	138	237	172	236	72.6	24.7	46.7	1.1
Argentina	89,650	108,018	108,373	136,730	20.5	20.9	31.6	-32.0
Bahamas	471	756	617	804	60.5	31.0	39.7	-10.2
Barbados	983	1,215	1,033	1,330	23.6	5.1	30.2	-11.7
Belize	273	422	436	582	54.7	59.7	53.6	-58.6
Bolivia	13,659	25,672	18,719	27,306	88.0	37.1	62.9	-12.0
Brazil	268,182	400,223	326,275	585,387	49.2	21.7	96.6	-69.0
Canada	86,691	109,631	105,851	142,828	26.5	22.1	42.7	-38.3
Chile	24,771	36,736	30,542	52,570	48.3	23.3	88.9	-63.9
Colombia	47,912	75,608	60,774	103,146	57.8	26.8	88.4	-57.5
Costa Rica	4,368	7,142	5,588	9,824	63.5	27.9	97.0	-61.4
Cuba	26,031	38,093	26,620	40,890	46.3	2.3	54.8	-10.7
Dominican Rep	7,024	21,208	8,928	15,264	201.9	27.1	90.2	84.6
Ecuador	13,159	22,723	18,091	27,234	72.7	37.5	69.5	-34.3
El Salvador	6,084	9,324	6,838	12,097	53.3	12.4	86.4	-45.6
Grenada	226	323	243	314	42.7	7.5	31.1	4.1
Guatemala	10,433	20,646	15,686	22,880	97.9	50.3	69.0	-21.4
Guyana	1,418	2,229	1,474	2,542	57.2	4.0	75.3	-22.1
Haiti	20,424	29,399	27,123	33,783	43.9	32.8	32.6	-21.5
Honduras	7,572	15,816	11,174	15,923	108.9	47.6	62.7	-1.4
Jamaica	5,162	6,693	5,743	6,662	29.7	11.3	17.8	0.6
Mexico	114,779	202,609	148,592	216,016	76.5	29.5	58.7	-11.7
Nicaragua	5,183	9,593	6,715	10,659	85.1	29.6	76.1	-20.6
Panama	3,061	5,817	4,317	6,831	90.0	41.0	82.1	-33.1
Paraguay	5,290	8,733	6,988	10,014	65.1	32.1	57.2	-24.2
Peru	25,218	40,720	31,096	52,412	61.5	23.3	84.5	-46.4
Saint Lucia	322	425	375	513	31.9	16.2	42.9	-27.2
St Vincent & Gren	273	302	278	399	10.9	1.9	44.6	-35.6
Suriname	716	1,299	888	1,272	81.6	24.0	53.7	3.8
Trinidad & Tobago	3,170	2,970	3,516	5,537	-6.3	10.9	63.7	-81.0
United States	980,819	1,140,522	1,140,614	1,356,834	16.3	16.3	22.0	-22.1
Uruguay	11,033	12,834	11,527	16,214	16.3	4.5	42.5	-30.6
Venezuela	26,321	45,586	31,601	52,164	73.2	20.1	78.1	-25.0

(3) Expected deaths due to population growth alone (4) Expected deaths due to population aging (5) Percent change in deaths (2000 to 2019) (6) Percent change due to growth (7) Percent change due to aging (8) Percent change due to age-stratified rate change

FIGURE S6. Contribution of changes in population growth, population aging, and rates of age-specific DALYs to the percentage change in DALYs due to NCDs, 2000 to 2019. Women only.

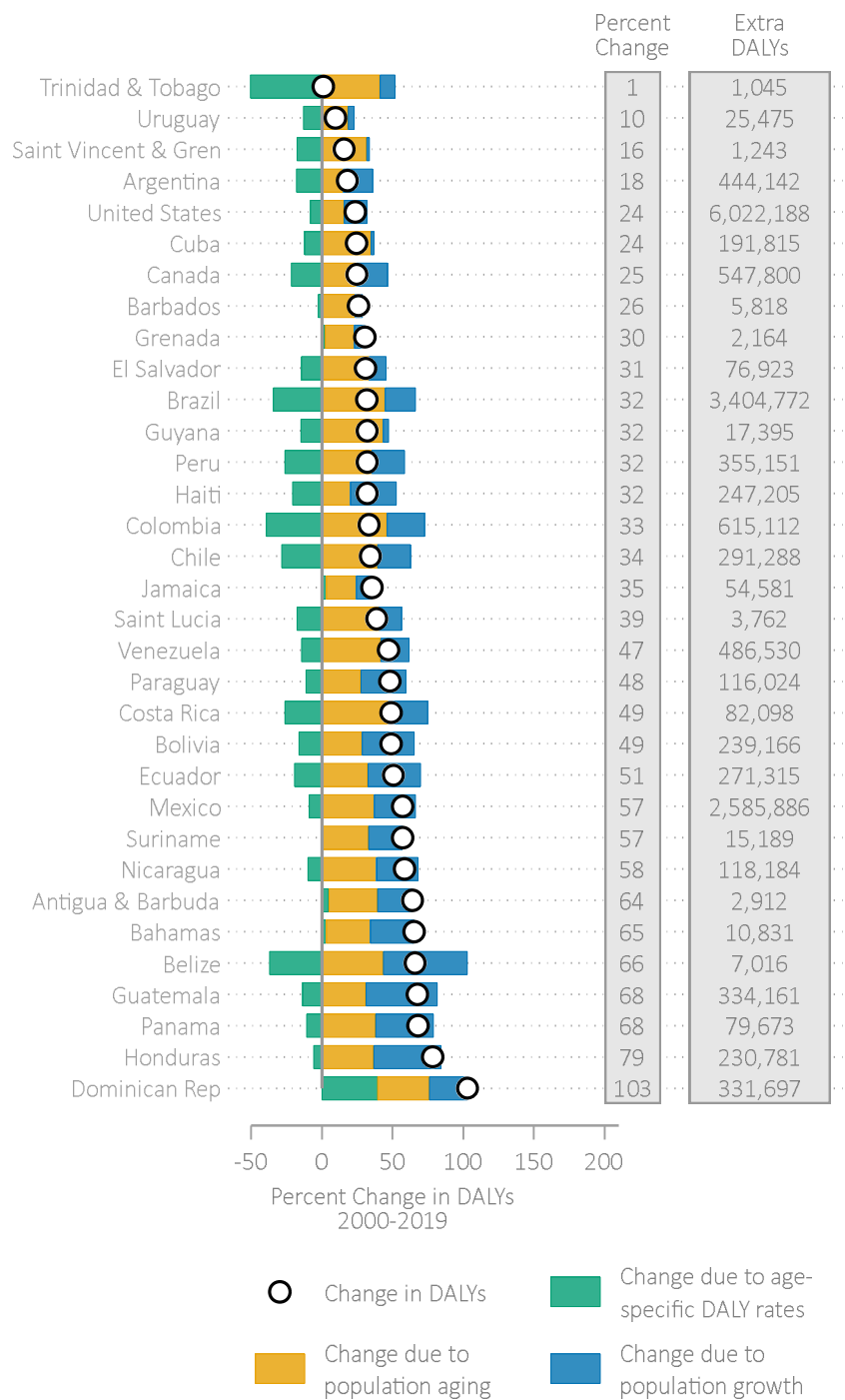


TABLE S6. Contribution of changes in population growth, population aging, and rates of age-specific morbidity to the percentage change in DALYs due to NCDs, 2000 to 2019. Women only.

Country	(1) DALYs (2000)	(2) DALYs (2019)	(3)	(4)	(5)	(6)	(7)	(8)
Antigua & Barbuda	4,544	7,456	5,667	7,234	64.1	24.7	34.5	4.9
Argentina	2,456,069	2,900,212	2,969,024	3,344,054	18.1	20.9	15.3	-18.1
Bahamas	16,618	27,450	21,770	26,970	65.2	31.0	31.3	2.9
Barbados	22,544	28,362	23,687	28,988	25.8	5.1	23.5	-2.8
Belize	10,641	17,658	16,991	21,605	65.9	59.7	43.4	-37.1
Bolivia	488,598	727,765	669,632	807,887	48.9	37.1	28.3	-16.4
Brazil	10,682,686	14,087,458	12,996,756	17,776,957	31.9	21.7	44.7	-34.5
Canada	2,213,228	2,761,028	2,702,361	3,243,495	24.8	22.1	24.4	-21.8
Chile	849,167	1,140,456	1,047,027	1,382,406	34.3	23.3	39.5	-28.5
Colombia	1,847,181	2,462,293	2,343,074	3,192,356	33.3	26.8	46.0	-39.5
Costa Rica	167,825	249,924	214,702	293,731	48.9	27.9	47.1	-26.1
Cuba	784,282	976,098	802,026	1,073,701	24.5	2.3	34.6	-12.4
Dominican Rep	321,822	653,520	409,087	526,444	103.1	27.1	36.5	39.5
Ecuador	536,179	807,494	737,137	911,289	50.6	37.5	32.5	-19.4
El Salvador	247,904	324,828	278,648	361,183	31.0	12.4	33.3	-14.7
Grenada	7,120	9,285	7,655	9,123	30.4	7.5	20.6	2.3
Guatemala	493,738	827,900	742,314	896,370	67.7	50.3	31.2	-13.9
Guyana	54,298	71,694	56,454	79,900	32.0	4.0	43.2	-15.1
Haiti	771,243	1,018,449	1,024,218	1,178,980	32.1	32.8	20.1	-20.8
Honduras	293,938	524,720	433,757	541,614	78.5	47.6	36.7	-5.7
Jamaica	153,786	208,368	171,101	203,798	35.5	11.3	21.3	3.0
Mexico	4,529,625	7,115,511	5,864,018	7,534,753	57.1	29.5	36.9	-9.3
Nicaragua	202,100	320,284	261,856	340,252	58.5	29.6	38.8	-9.9
Panama	117,126	196,799	165,175	209,573	68.0	41.0	37.9	-10.9
Paraguay	240,579	356,603	317,790	384,128	48.2	32.1	27.6	-11.4
Peru	1,108,117	1,463,268	1,366,419	1,757,404	32.1	23.3	35.3	-26.5
Saint Lucia	9,701	13,464	11,270	15,187	38.8	16.2	40.4	-17.8
St Vincent & Gren	7,929	9,172	8,078	10,593	15.7	1.9	31.7	-17.9
Suriname	26,606	41,796	33,005	41,648	57.1	24.0	32.5	0.6
Trinidad & Tobago	100,624	101,669	111,624	152,808	1.0	10.9	40.9	-50.8
United States	25,497,841	31,520,030	29,651,948	33,654,288	23.6	16.3	15.7	-8.4
Uruguay	262,358	287,834	274,114	322,569	9.7	4.5	18.5	-13.2
Venezuela	1,033,451	1,519,982	1,240,758	1,670,358	47.1	20.1	41.6	-14.6

(3) Expected DALYs due to population growth alone (4) Expected DALYs due to population aging (5) Percent change in DALYs (2000 to 2019) (6) Percent change due to growth (7) Percent change due to aging (8) Percent change due to age-stratified rate change

FIGURE S7. Contribution of changes in population growth, population aging, and rates of age-specific mortality to the percentage change in mortality due to NCDs, 2000 to 2019. Men only.

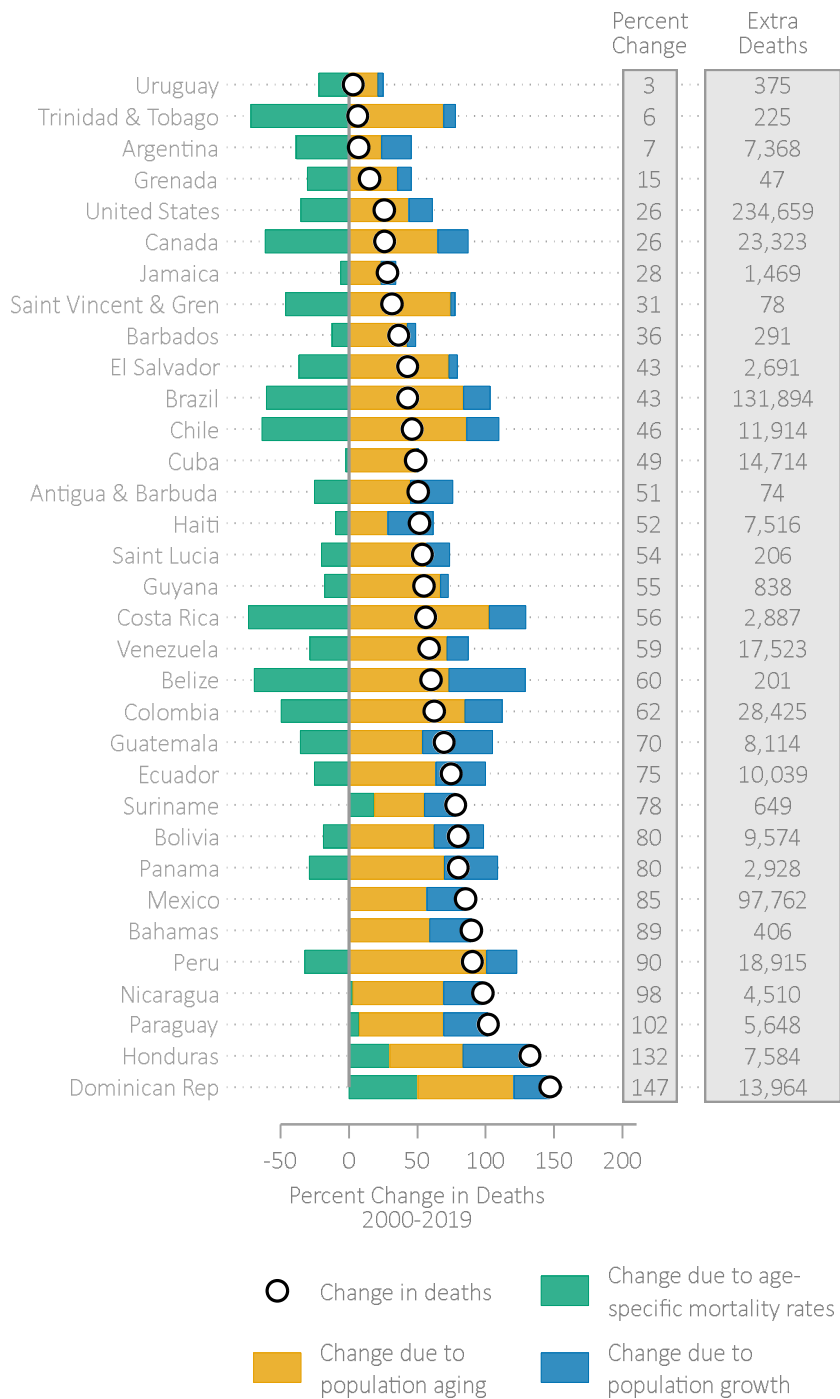


TABLE S7. Contribution of changes in population growth, population aging, and rates of age-specific mortality to the percentage change in mortality due to NCDs, 2000 to 2019. Men only.

Country	(1) Deaths (2000)	(2) Deaths (2019)	(3)	(4)	(5)	(6)	(7)	(8)
Antigua & Barbuda	147	222	193	259	50.7	31.2	44.7	-25.2
Argentina	101,492	108,861	123,876	147,938	7.3	22.1	23.7	-38.5
Bahamas	455	861	592	858	89.4	30.3	58.4	0.7
Barbados	802	1,093	853	1,193	36.4	6.4	42.4	-12.4
Belize	337	539	525	771	60.0	56.0	73.1	-69.1
Bolivia	11,991	21,565	16,364	23,802	79.8	36.5	62.0	-18.7
Brazil	306,811	438,705	367,590	623,771	43.0	19.8	83.5	-60.3
Canada	89,424	112,747	109,556	167,566	26.1	22.5	64.9	-61.3
Chile	25,790	37,705	31,919	54,116	46.2	23.8	86.1	-63.6
Colombia	45,555	73,981	57,950	96,573	62.4	27.2	84.8	-49.6
Costa Rica	5,149	8,036	6,531	11,811	56.1	26.8	102.5	-73.3
Cuba	30,225	44,940	30,665	45,608	48.7	1.5	49.4	-2.2
Dominican Rep	9,502	23,466	12,013	18,678	147.0	26.4	70.2	50.4
Ecuador	13,438	23,478	18,348	26,883	74.7	36.5	63.5	-25.3
El Salvador	6,277	8,968	6,691	11,270	42.9	6.6	73.0	-36.7
Grenada	312	359	344	454	15.2	10.3	35.3	-30.5
Guatemala	11,666	19,780	17,672	23,930	69.6	51.5	53.6	-35.6
Guyana	1,532	2,371	1,619	2,645	54.8	5.7	67.0	-17.9
Haiti	14,529	22,046	19,375	23,490	51.7	33.4	28.3	-9.9
Honduras	5,731	13,315	8,534	11,607	132.3	48.9	53.6	29.8
Jamaica	5,211	6,681	5,777	7,001	28.2	10.9	23.5	-6.1
Mexico	114,696	212,458	147,399	212,723	85.2	28.5	57.0	-0.2
Nicaragua	4,611	9,121	5,932	8,992	97.8	28.7	66.4	2.8
Panama	3,664	6,592	5,102	7,650	79.9	39.3	69.5	-28.9
Paraguay	5,546	11,195	7,353	10,784	101.8	32.6	61.8	7.4
Peru	20,962	39,877	25,661	46,689	90.2	22.4	100.3	-32.5
Saint Lucia	386	593	451	670	53.7	17.1	56.6	-20.1
St Vincent & Gren	248	326	256	441	31.5	3.3	74.4	-46.2
Suriname	833	1,483	1,023	1,328	78.0	22.9	36.6	18.5
Trinidad & Tobago	3,481	3,706	3,802	6,203	6.5	9.2	69.0	-71.7
United States	904,254	1,138,914	1,061,075	1,457,719	26.0	17.3	43.9	-35.3
Uruguay	11,971	12,346	12,457	14,991	3.1	4.1	21.2	-22.1
Venezuela	29,821	47,345	34,503	55,896	58.8	15.7	71.7	-28.7

(3) Expected deaths due to population growth alone (4) Expected deaths due to population aging (5) Percent change in deaths (2000 to 2019) (6) Percent change due to growth (7) Percent change due to aging (8) Percent change due to age-stratified rate change

FIGURE S8. Contribution of changes in population growth, population aging, and rates of age-specific DALYs to the percentage change in DALYs due to NCDs, 2000 to 2019. Men only.

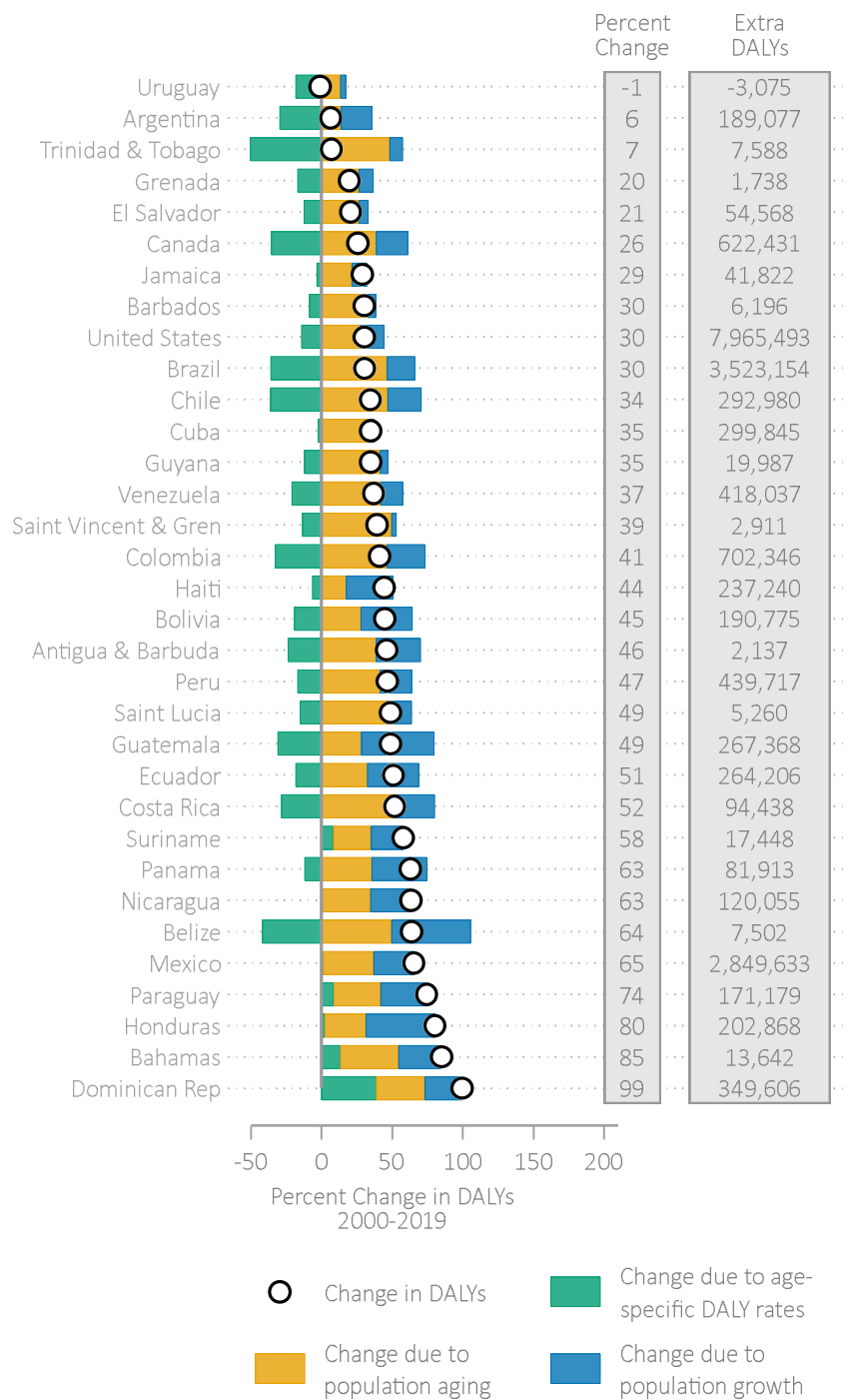


TABLE S8. Contribution of changes in population growth, population aging, and rates of age-specific morbidity to the percentage change in DALYs due to NCDs, 2000 to 2019. Men only.

Country	(1) DALYs (2000)	(2) DALYs (2019)	(3)	(4)	(5)	(6)	(7)	(8)
Antigua & Barbuda	4,645	6,782	6,094	7,896	46.0	31.2	38.8	-24.0
Argentina	2,938,620	3,127,698	3,586,735	3,993,771	6.4	22.1	13.9	-29.5
Bahamas	16,070	29,713	20,947	27,567	84.9	30.3	41.2	13.4
Barbados	20,548	26,745	21,865	28,503	30.2	6.4	32.3	-8.6
Belize	11,801	19,303	18,412	24,256	63.6	56.0	49.5	-42.0
Bolivia	426,769	617,545	582,447	700,501	44.7	36.5	27.7	-19.4
Brazil	11,579,757	15,102,912	13873668	19248226	30.4	19.8	46.4	-35.8
Canada	2,431,411	3,053,843	2,978,792	3,923,108	25.6	22.5	38.8	-35.8
Chile	849,325	1,142,306	1,051,143	1,448,898	34.5	23.8	46.8	-36.1
Colombia	1,715,391	2,417,737	2,182,124	2,977,385	40.9	27.2	46.4	-32.6
Costa Rica	182,599	277,038	231,621	328,938	51.7	26.8	53.3	-28.4
Cuba	864,984	1,164,830	877,588	1,188,344	34.7	1.5	35.9	-2.7
Dominican Rep	351,705	701,312	444,636	564,804	99.4	26.4	34.2	38.8
Ecuador	520,865	785,071	711,148	880,408	50.7	36.5	32.5	-18.3
El Salvador	265,395	319,964	282,909	353,257	20.6	6.6	26.5	-12.5
Grenada	8,837	10,576	9,750	12,069	19.7	10.3	26.3	-16.9
Guatemala	547,924	815,292	830,018	984,181	48.8	51.5	28.1	-30.8
Guyana	57,369	77,357	60,634	84,368	34.8	5.7	41.4	-12.2
Haiti	534,767	772,007	713,136	807,181	44.4	33.4	17.6	-6.6
Honduras	253,017	455,886	376,798	450,228	80.2	48.9	29.0	2.2
Jamaica	144,532	186,355	160,224	191,222	28.9	10.9	21.4	-3.4
Mexico	4,365,946	7,215,580	5,610,810	7,165,738	65.3	28.5	35.6	1.1
Nicaragua	189,784	309,840	244,182	310,052	63.3	28.7	34.7	-0.1
Panama	130,200	212,113	181,307	227,660	62.9	39.3	35.6	-11.9
Paraguay	230,138	401,318	305,108	381,389	74.4	32.6	33.1	8.7
Peru	942,997	1,382,714	1,154,424	1,543,256	46.6	22.4	41.2	-17.0
Saint Lucia	10,809	16,070	12,657	17,700	48.7	17.1	46.7	-15.1
St Vincent & Gren	7,407	10,319	7,653	11,322	39.3	3.3	49.5	-13.5
Suriname	30,239	47,688	37,151	45,152	57.7	22.9	26.5	8.4
Trinidad & Tobago	109,395	116,984	119,496	172,264	6.9	9.2	48.2	-50.5
United States	26,261,956	34,227,449	30816434	37939452	30.3	17.3	27.1	-14.1
Uruguay	309,752	306,677	322,328	363,655	-1.0	4.1	13.3	-18.4
Venezuela	1,135,984	1,554,021	1,314,305	1,791,083	36.8	15.7	42.0	-20.9

(3) Expected DALYs due to population growth alone (4) Expected DALYs due to population aging (5) Percent change in DALYs (2000 to 2019) (6) Percent change due to growth (7) Percent change due to aging (8) Percent change due to age-stratified rate change

PART THREE. DECOMPOSITION OF REASONS FOR DEATHS/DALYs BETWEEN 2000 and 2019 INCORPORATING UNCERTAINTY, FOR WOMEN AND MEN SEPARATELY

FIGURE S9a. Contribution of changes in population growth, population aging, and rates of age-specific morbidity to the percentage change in deaths due to NCDs, 2000 to 2019, with associated sensitivity ranges for overall percentage change in deaths. Women and Men combined. Overall change in deaths based on point estimate.

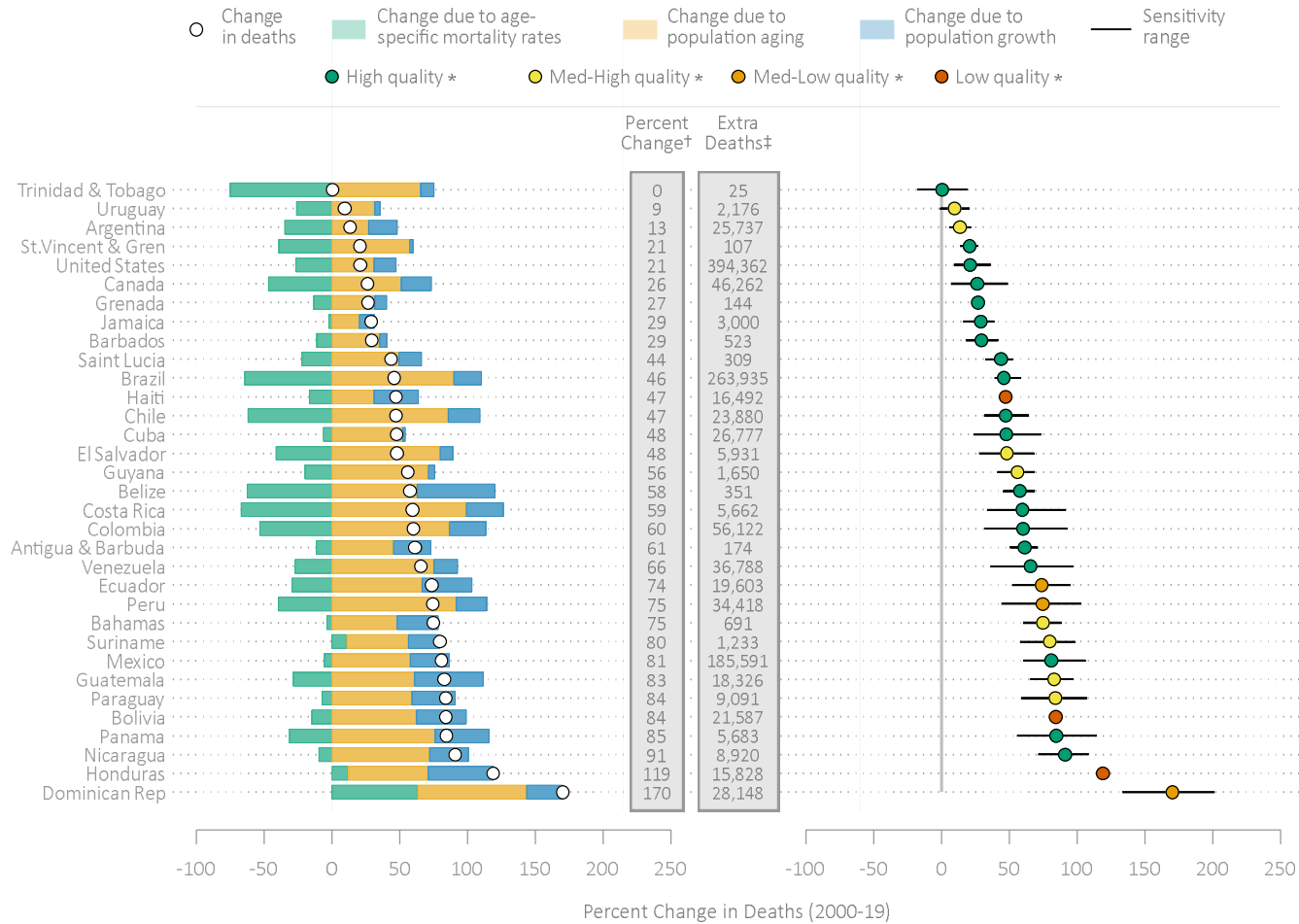


FIGURE S9b. Contribution of changes in population growth, population aging, and rates of age-specific morbidity to the percentage change in deaths due to NCDs, 2000 to 2019, with associated sensitivity ranges for overall percentage change in deaths. Women and Men combined. Overall change in deaths based on lower bound of WHO uncertainty interval.

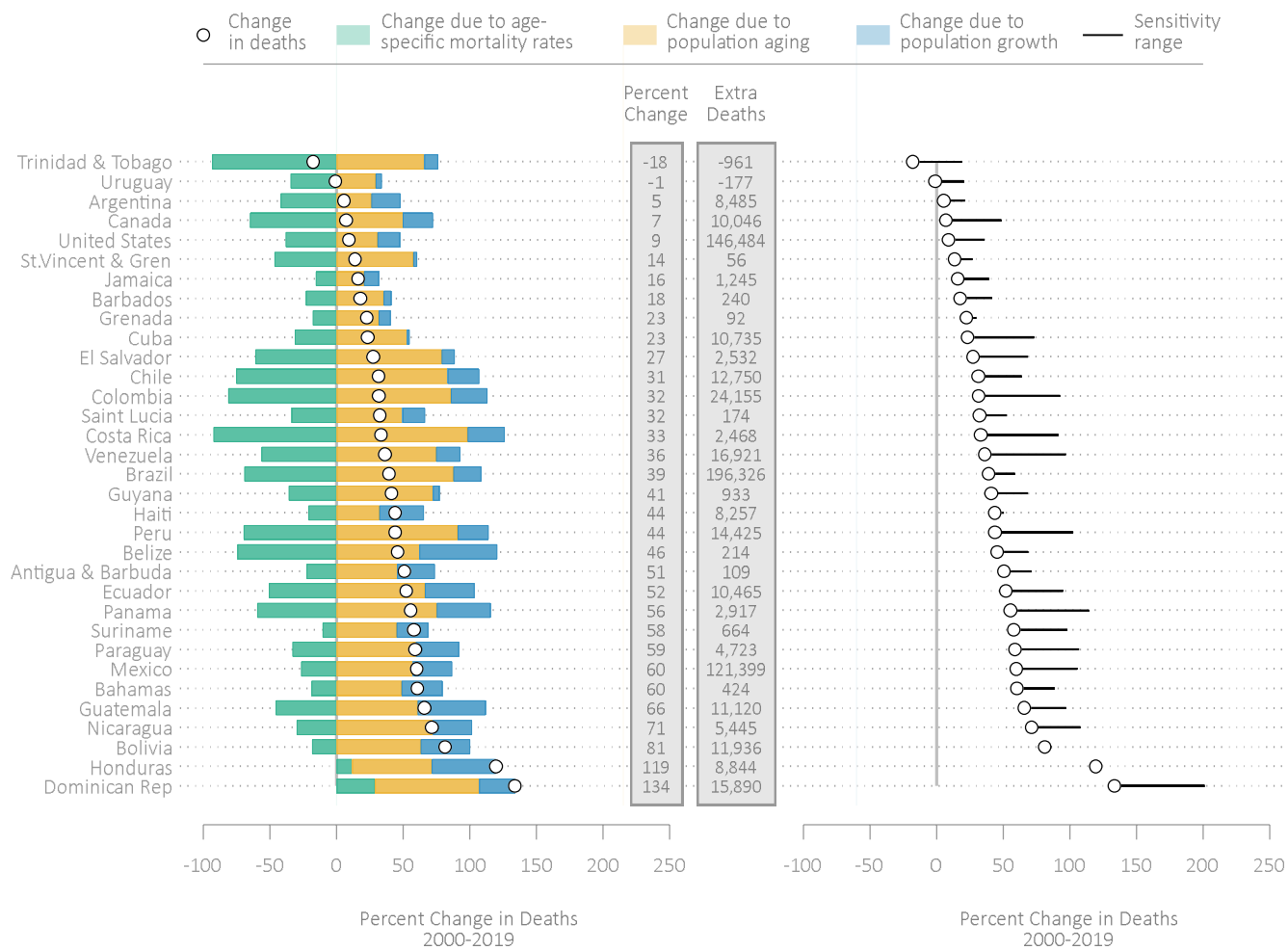


FIGURE S9c. Contribution of changes in population growth, population aging, and rates of age-specific morbidity to the percentage change in deaths due to NCDs, 2000 to 2019, with associated sensitivity ranges for overall percentage change in deaths. Women and Men combined. Overall change in deaths based on upper bound of WHO uncertainty interval.

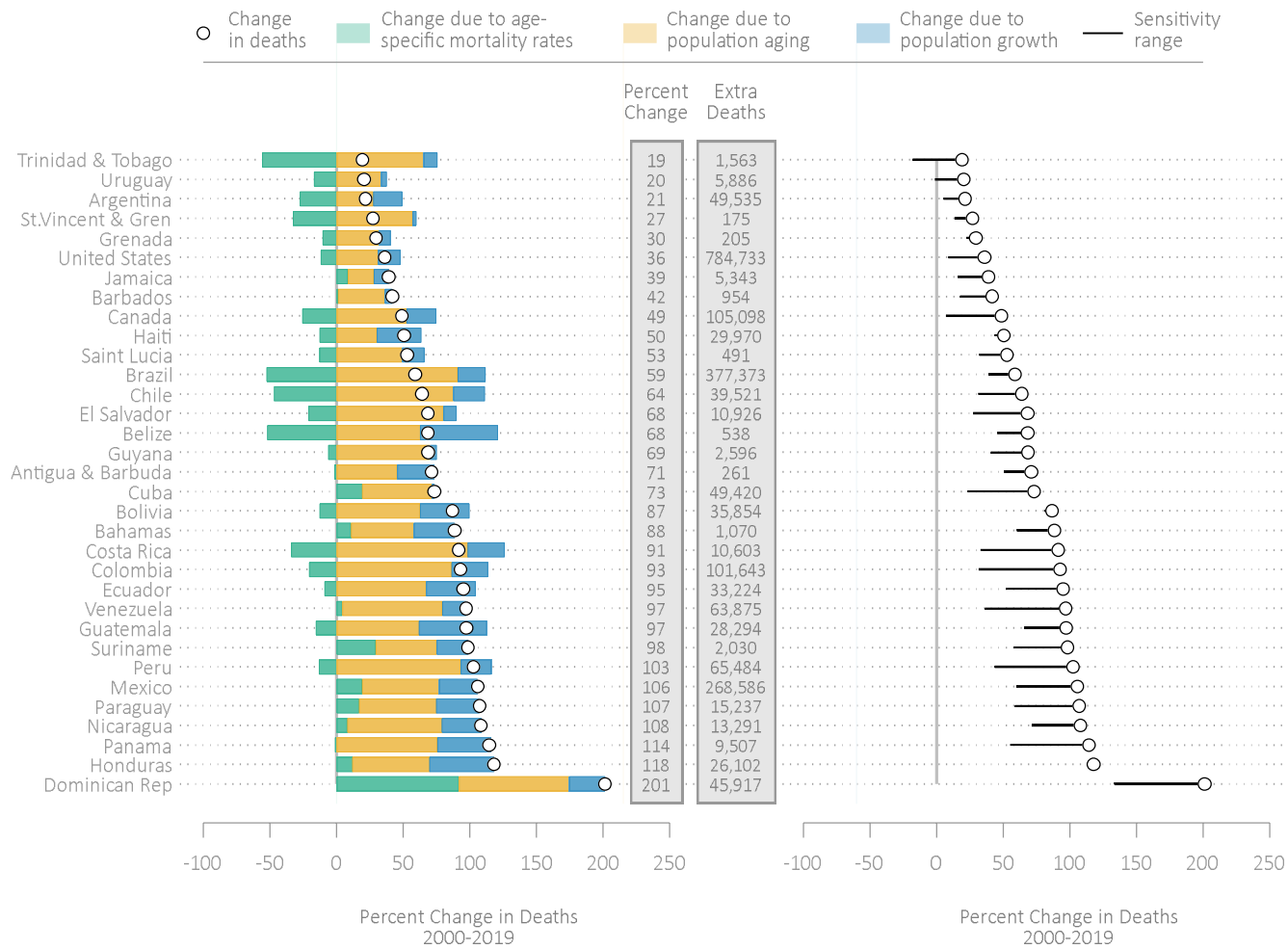


FIGURE S9d. Contribution of changes in population growth, population aging, and rates of age-specific morbidity to the percentage change in DALYs due to NCDs, 2000 to 2019, with associated sensitivity ranges for overall percentage change in DALYs. Women and Men combined. Overall change in DALYs based on point estimate.

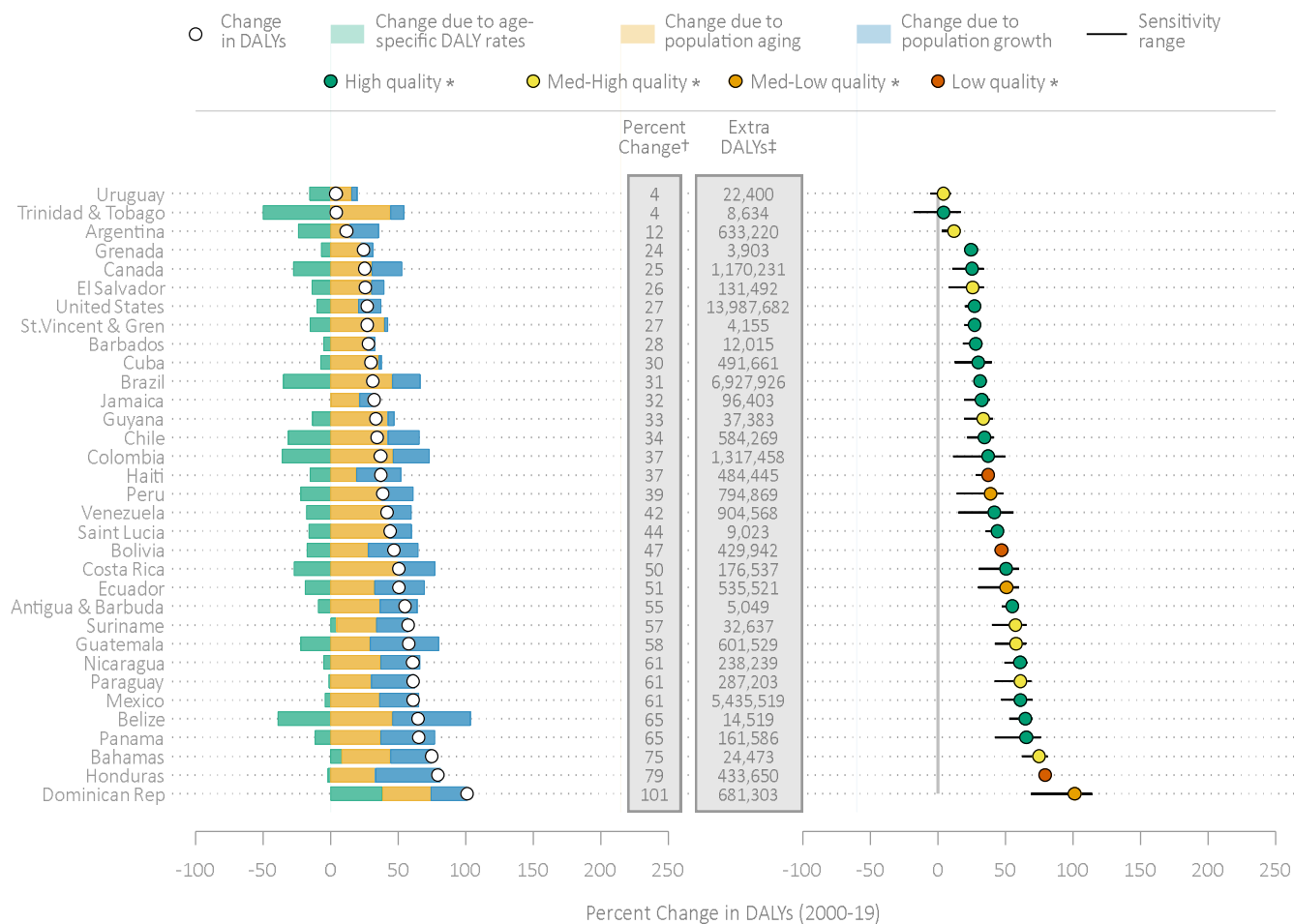


FIGURE S9e. Contribution of changes in population growth, population aging, and rates of age-specific morbidity to the percentage change in DALYs due to NCDs, 2000 to 2019, with associated sensitivity ranges for overall percentage change in DALYs. Women and Men combined. Overall change in DALYs based on lower bound of WHO uncertainty interval.

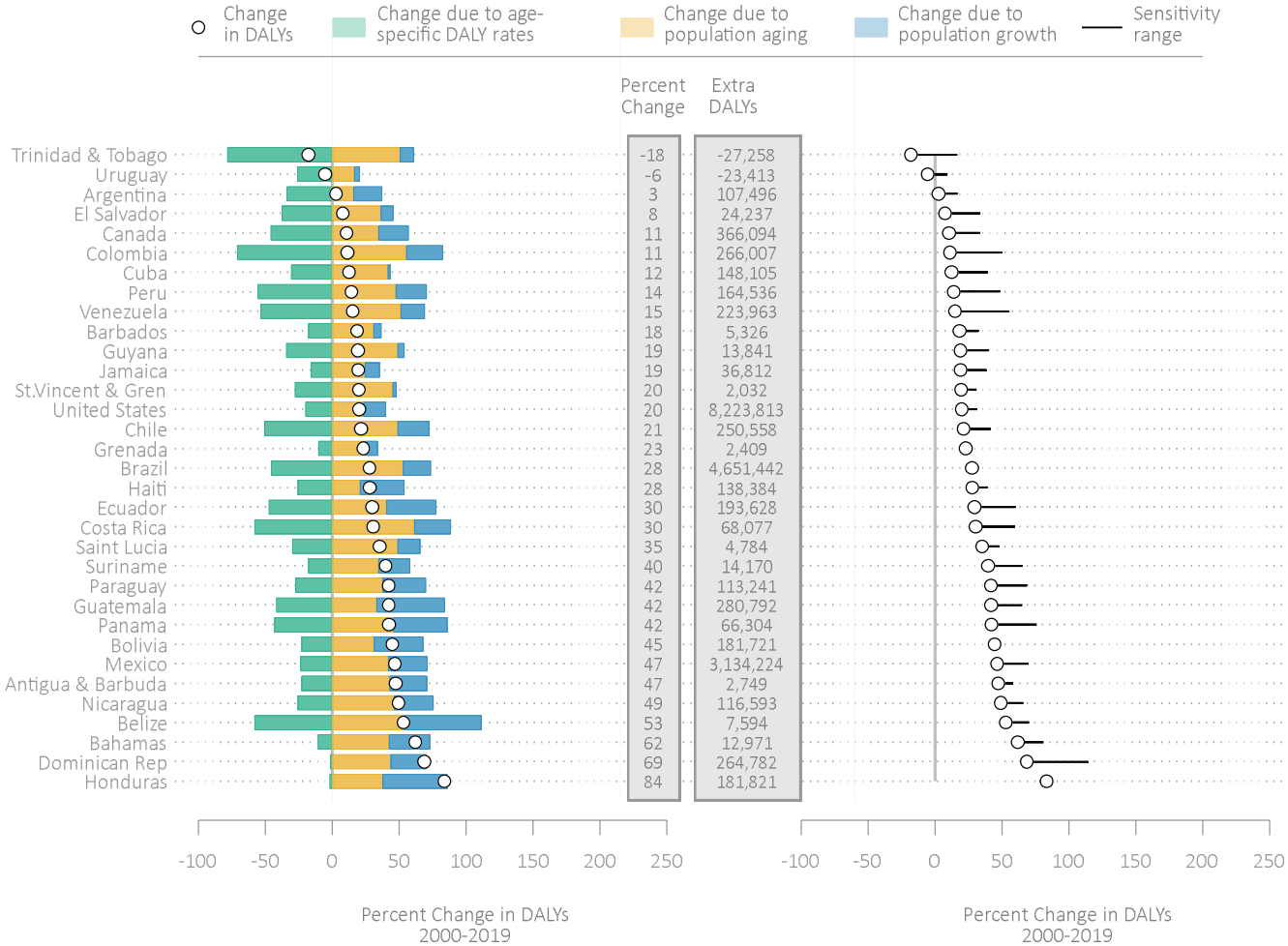


FIGURE S9f. Contribution of changes in population growth, population aging, and rates of age-specific morbidity to the percentage change in DALYs due to NCDs, 2000 to 2019, with associated sensitivity ranges for overall percentage change in DALYs. Women and Men combined. Overall change in DALYs based on upper bound of WHO uncertainty interval.

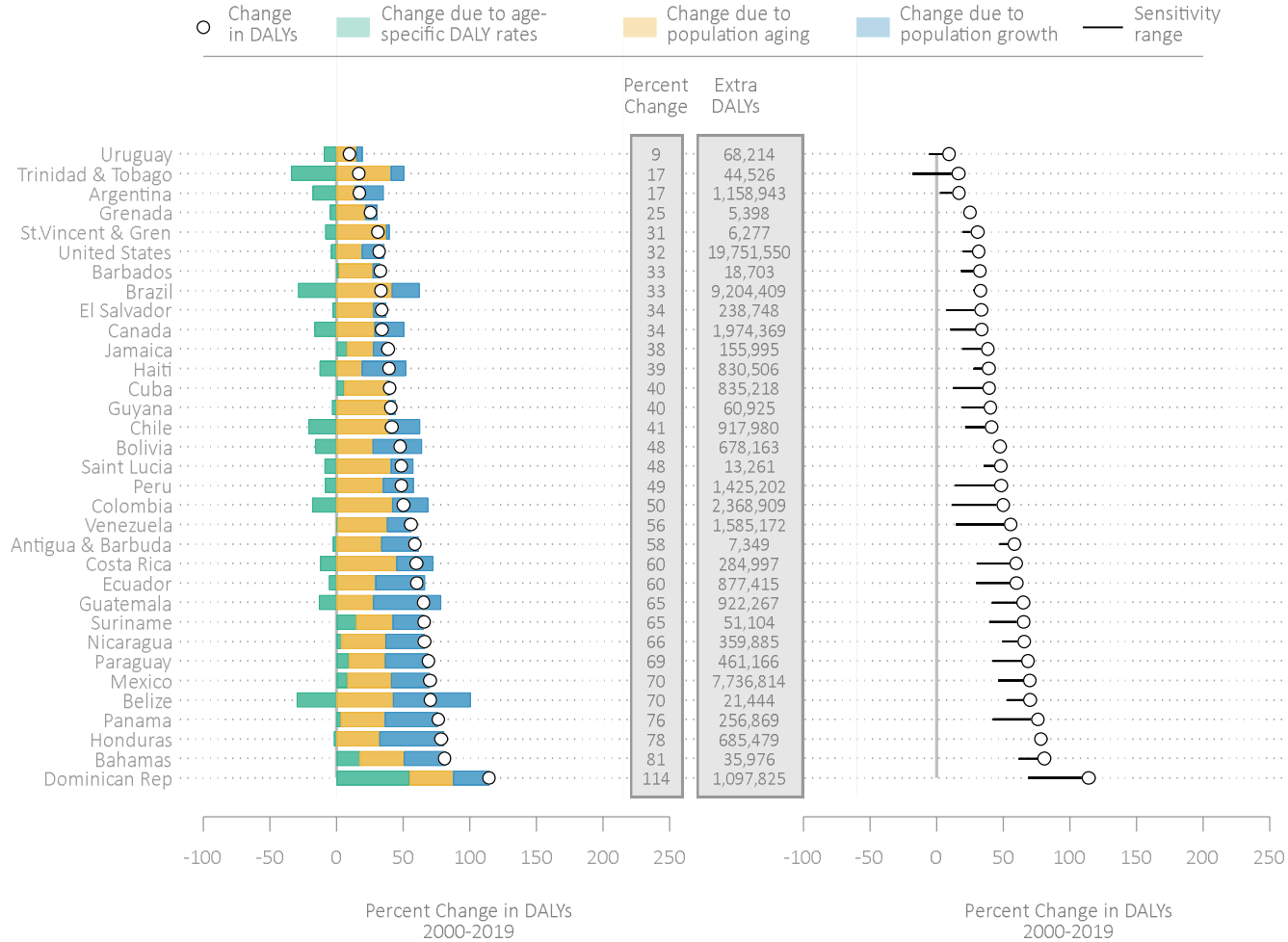


TABLE S9. Deaths/DALYs in 2000 and in 2019, and percentage change in deaths/DALYs between 2000 and 2019, with associated sensitivity ranges. Women and Men combined.

Country	Deaths or DALYs	Count in 2000	Count in 2019	Percentage change (2000 to 2019)	Lower bound of Sensitivity Range	Upper bound of Sensitivity Range
Antigua & Barbuda	deaths	285	460	61.3	50.6	71.2
Argentina	deaths	191,142	216,880	13.5	5.4	21.4
Bahamas	deaths	925	1,617	74.7	60.3	88.5
Barbados	deaths	1,785	2,309	29.3	17.6	41.7
Belize	deaths	609	961	57.6	45.6	68.4
Bolivia	deaths	25,649	47,236	84.2	81.2	86.7
Brazil	deaths	574,993	838,929	45.9	39.2	58.8
Canada	deaths	176,115	222,378	26.3	7.0	48.8
Chile	deaths	50,561	74,442	47.2	31.4	64.0
Colombia	deaths	93,466	149,588	60.0	31.6	92.8
Costa Rica	deaths	9,516	15,179	59.5	33.3	91.4
Cuba	deaths	56,256	83,033	47.6	23.2	73.2
Dominican Rep	deaths	16,526	44,674	170.3	133.6	201.2
Ecuador	deaths	26,597	46,201	73.7	52.1	95.0
El Salvador	deaths	12,361	18,292	48.0	27.3	68.4
Grenada	deaths	538	682	26.8	22.5	29.6
Guatemala	deaths	22,099	40,426	82.9	65.8	97.2
Guyana	deaths	2,950	4,601	55.9	41.1	68.6
Haiti	deaths	34,953	51,445	47.2	43.8	50.5
Honduras	deaths	13,302	29,131	119.0	119.4	117.9
Jamaica	deaths	10,373	13,373	28.9	16.0	39.0
LAC	deaths	3,597,661	4,857,202	35.0	21.5	51.7
Mexico	deaths	229,475	415,067	80.9	59.9	105.7
Nicaragua	deaths	9,794	18,714	91.1	71.3	108.1
Panama	deaths	6,725	12,409	84.5	55.5	114.4
Paraguay	deaths	10,837	19,928	83.9	58.8	107.1
Peru	deaths	46,180	80,598	74.5	43.8	102.5
Saint Lucia	deaths	708	1,018	43.8	32.3	52.8
St Vincent & Gren	deaths	521	629	20.7	13.6	27.1
Suriname	deaths	1,549	2,782	79.6	57.9	98.4
Trinidad & Tobago	deaths	6,651	6,677	0.4	-17.8	19.2
United States	deaths	1,885,073	2,279,436	20.9	9.1	36.0
Uruguay	deaths	23,004	25,180	9.5	-1.0	20.4
Venezuela	deaths	56,143	92,931	65.5	36.2	97.0
Antigua & Barbuda	daly	9,189	14,238	55.0	47.3	58.5
Argentina	daly	5,394,689	6,027,909	11.7	2.7	16.9
Bahamas	daly	32,688	57,162	74.9	61.9	81.0
Barbados	daly	43,092	55,107	27.9	18.4	32.7
Belize	daly	22,442	36,961	64.7	52.9	70.2
Bolivia	daly	915,367	1,345,310	47.0	44.6	47.6
Brazil	daly	22,262,443	29,190,370	31.1	27.8	33.1
Canada	daly	4,644,639	5,814,871	25.2	10.6	33.9
Chile	daly	1,698,492	2,282,762	34.4	21.3	41.3
Colombia	daly	3,562,572	4,880,031	37.0	11.1	50.0
Costa Rica	daly	350,424	526,962	50.4	30.4	59.7
Cuba	daly	1,649,266	2,140,928	29.8	12.4	39.6
Dominican Rep	daly	673,528	1,354,832	101.2	68.6	114.2
Ecuador	daly	1,057,044	1,592,565	50.7	29.6	60.1
El Salvador	daly	513,299	644,792	25.6	7.6	33.7

Grenada	daly	15,957	19,861	24.5	23.0	25.2
Guatemala	daly	1,041,662	1,643,192	57.7	42.0	65.2
Guyana	daly	111,667	149,050	33.5	19.0	40.5
Haiti	daly	1,306,010	1,790,456	37.1	27.8	39.3
Honduras	daly	546,956	980,606	79.3	83.5	78.2
Jamaica	daly	298,319	394,722	32.3	19.2	38.5
LAC	daly	113,010,408	149,689,870	32.5	22.7	38.3
Mexico	daly	8,895,571	14,331,091	61.1	46.6	69.9
Nicaragua	daly	391,884	630,124	60.8	49.2	65.8
Panama	daly	247,326	408,913	65.3	42.2	76.1
Paraguay	daly	470,717	757,921	61.0	42.0	68.7
Peru	daly	2,051,114	2,845,983	38.8	14.1	48.6
Saint Lucia	daly	20,510	29,533	44.0	35.2	48.3
St Vincent & Gren	daly	15,336	19,491	27.1	19.6	30.9
Suriname	daly	56,846	89,483	57.4	39.8	65.5
Trinidad & Tobago	daly	210,019	218,653	4.1	-18.0	16.6
United States	daly	51,759,797	65,747,479	27.0	19.9	31.7
Uruguay	daly	572,110	594,510	3.9	-5.6	9.4
Venezuela	daly	2,169,434	3,074,003	41.7	15.0	55.6

FIGURE S10a. Contribution of changes in population growth, population aging, and rates of age-specific morbidity to the percentage change in deaths due to NCDs, 2000 to 2019, with associated sensitivity ranges for overall percentage change in deaths. Women only. Overall change in deaths based on point estimate.

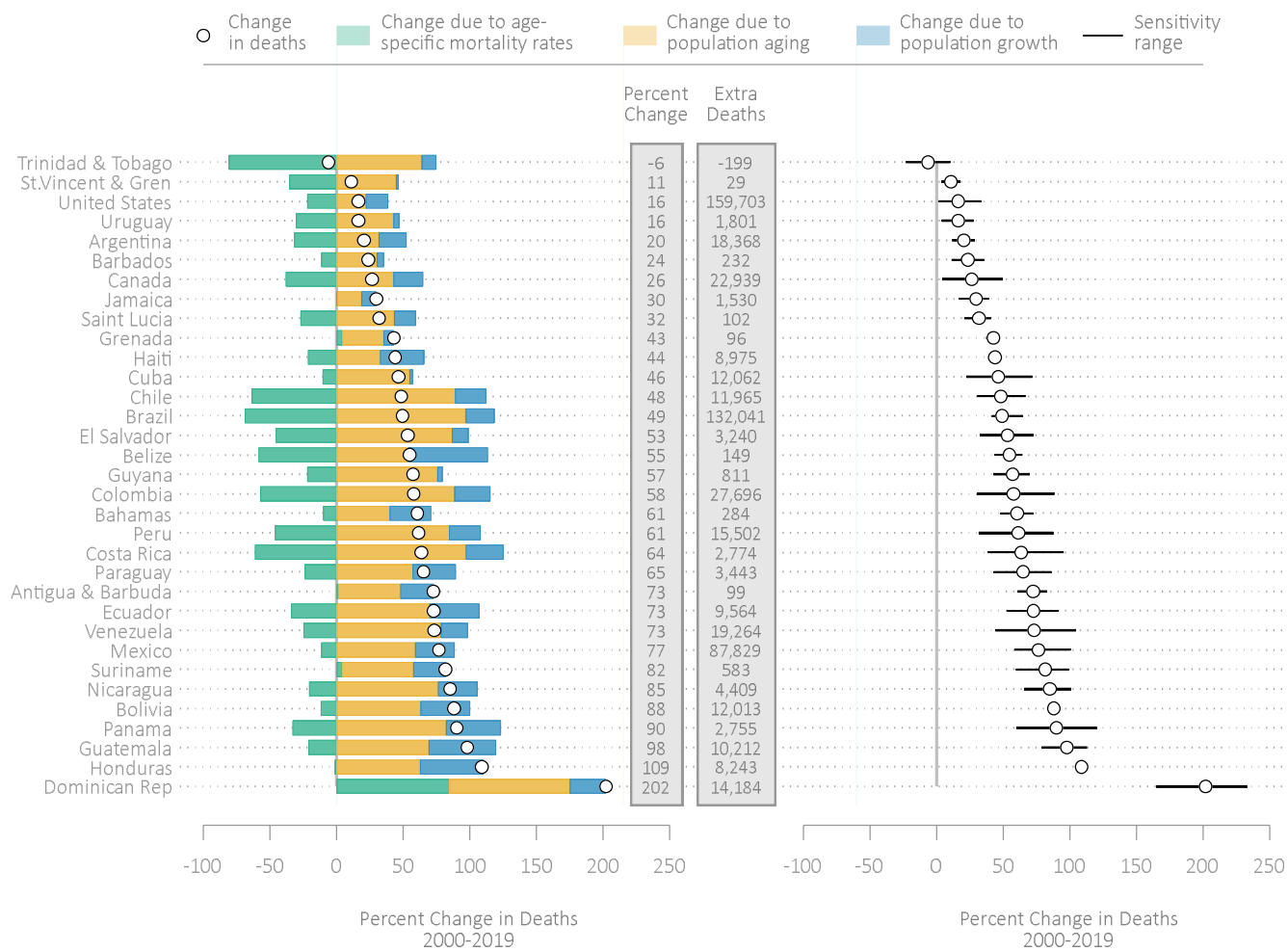


FIGURE S10b. Contribution of changes in population growth, population aging, and rates of age-specific morbidity to the percentage change in deaths due to NCDs, 2000 to 2019, with associated sensitivity ranges for overall percentage change in deaths. Women only. Overall change in deaths based on lower bound of WHO uncertainty interval.

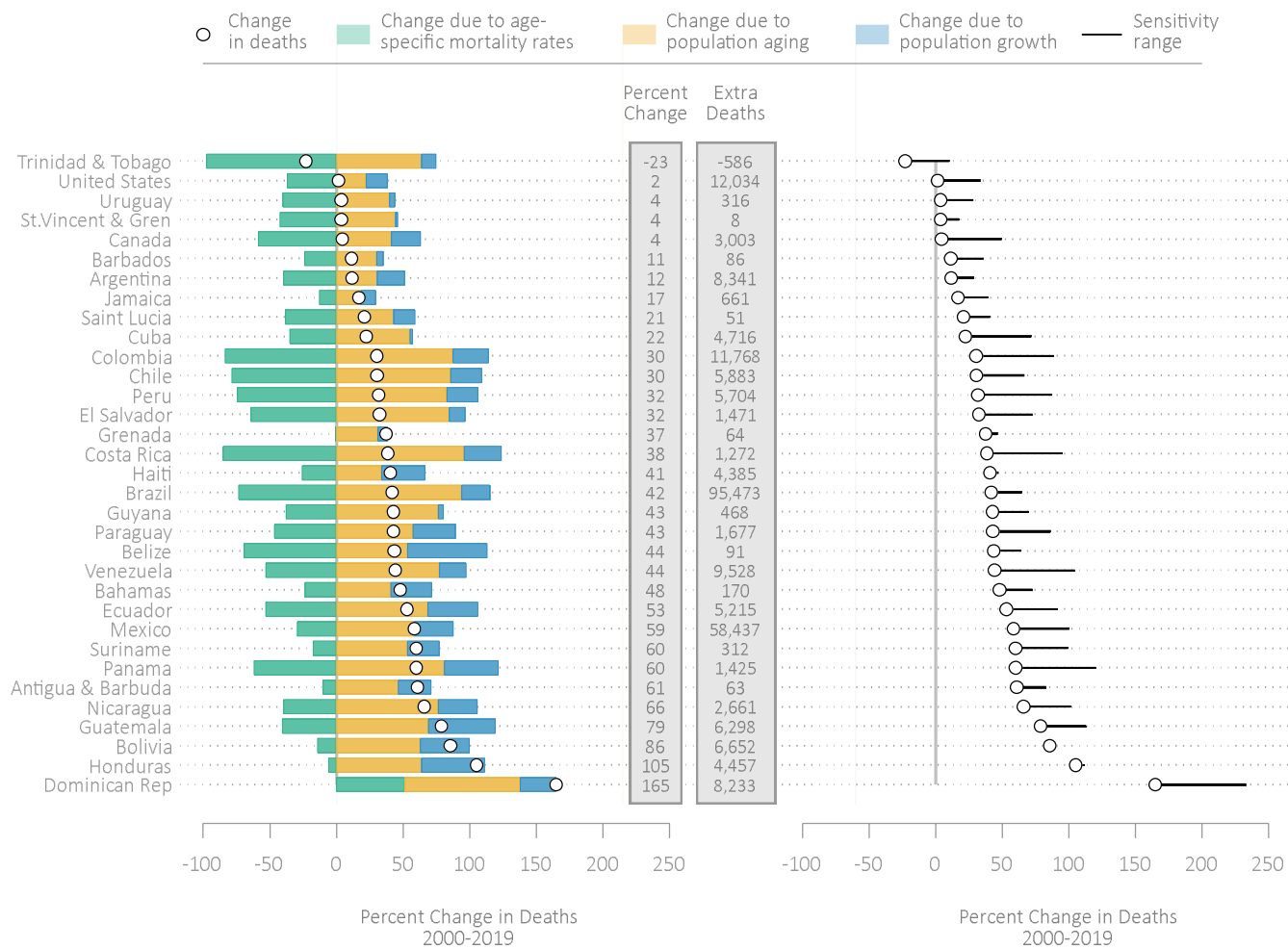


FIGURE S10c. Contribution of changes in population growth, population aging, and rates of age-specific morbidity to the percentage change in deaths due to NCDs, 2000 to 2019, with associated sensitivity ranges for overall percentage change in deaths. Women only. Overall change in deaths based on upper bound of WHO uncertainty interval.

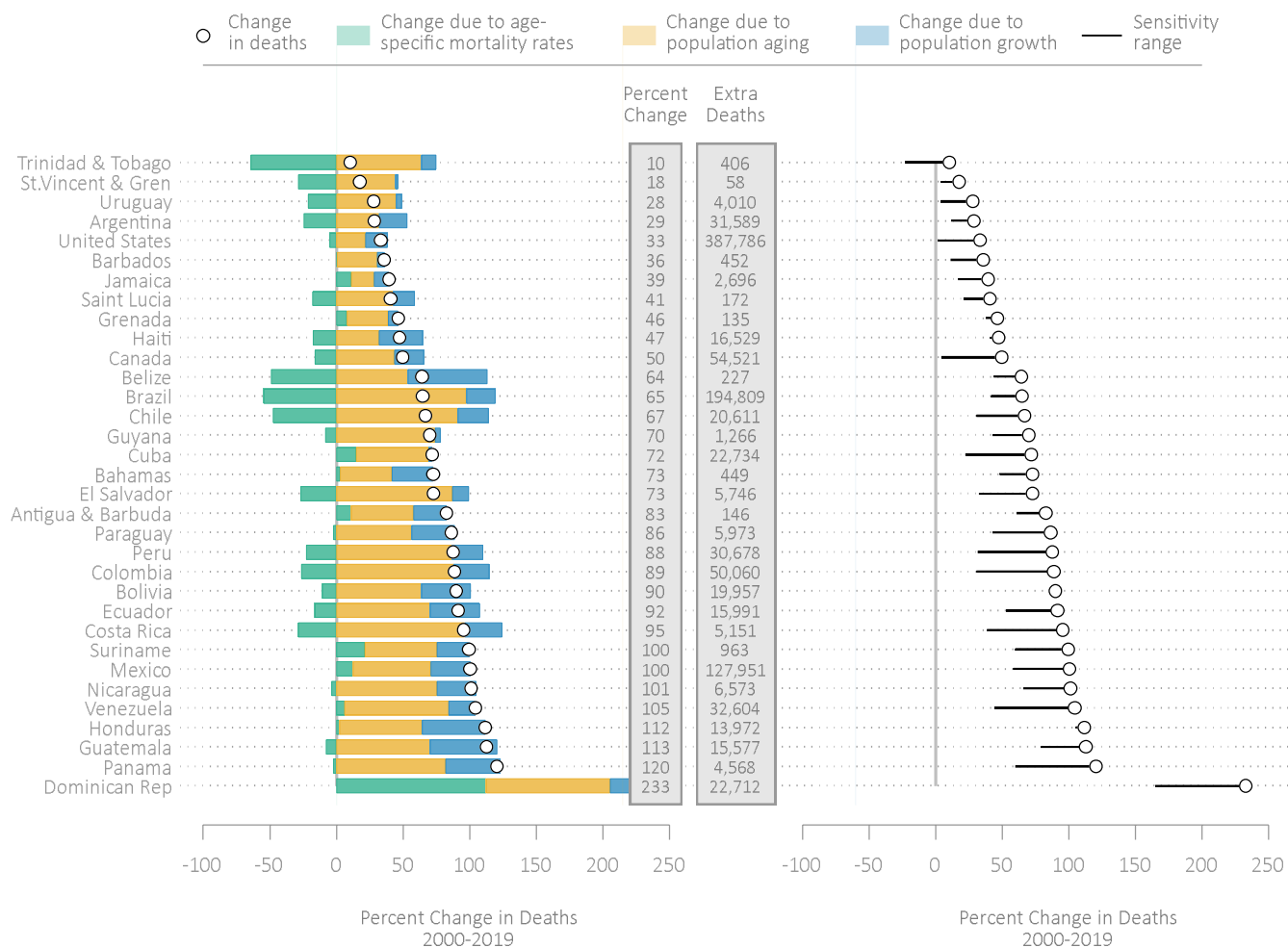


FIGURE S10d. Contribution of changes in population growth, population aging, and rates of age-specific morbidity to the percentage change in DALYs due to NCDs, 2000 to 2019, with associated sensitivity ranges for overall percentage change in DALYs. Women only. Overall change in DALYs based on point estimate.

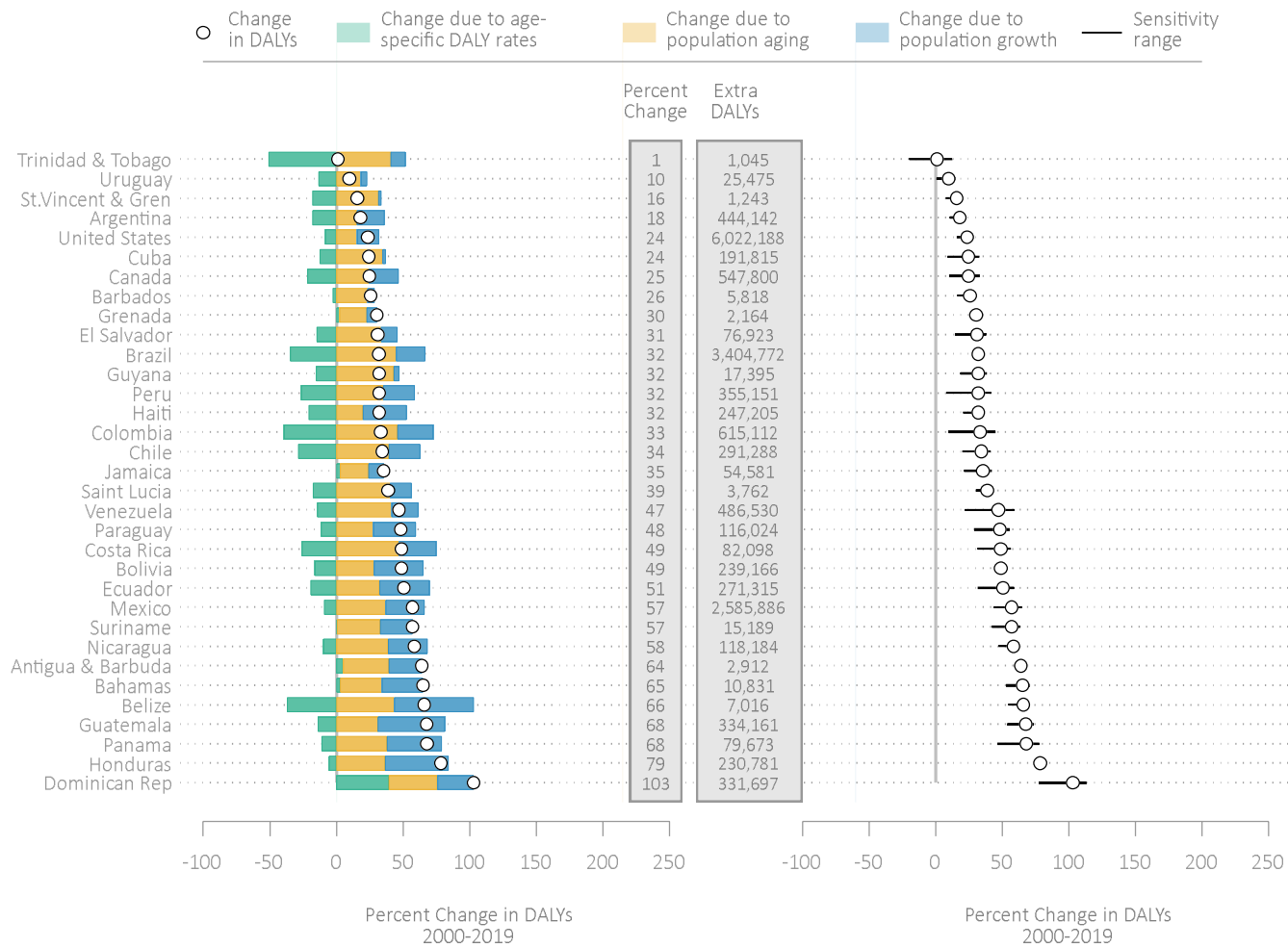


FIGURE S10e. Contribution of changes in population growth, population aging, and rates of age-specific morbidity to the percentage change in DALYs due to NCDs, 2000 to 2019, with associated sensitivity ranges for overall percentage change in DALYs. Women only. Overall change in DALYs based on lower bound of WHO uncertainty interval.

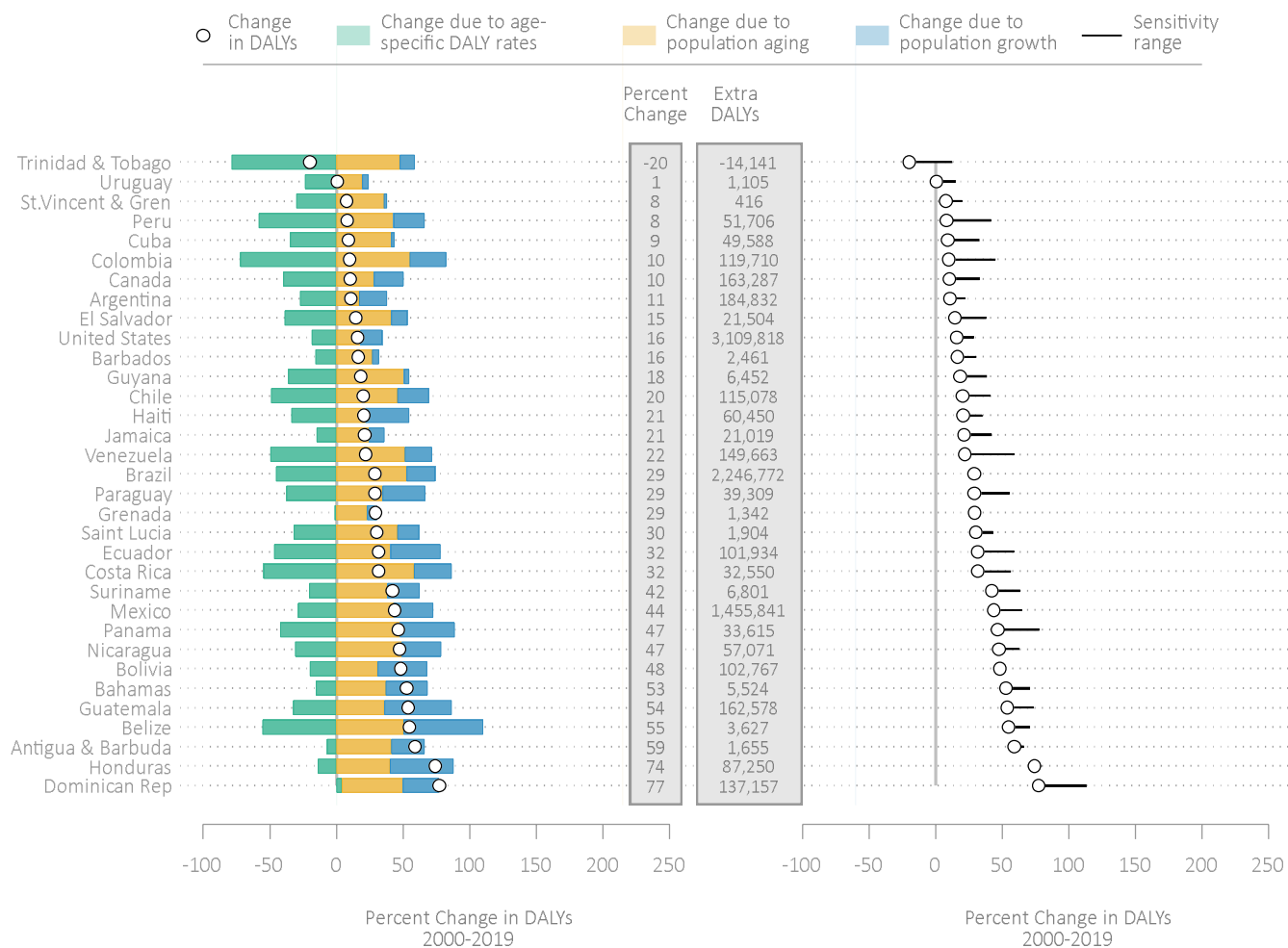


FIGURE S10f. Contribution of changes in population growth, population aging, and rates of age-specific morbidity to the percentage change in DALYs due to NCDs, 2000 to 2019, with associated sensitivity ranges for overall percentage change in DALYs. Women only. Overall change in DALYs based on upper bound of WHO uncertainty interval.

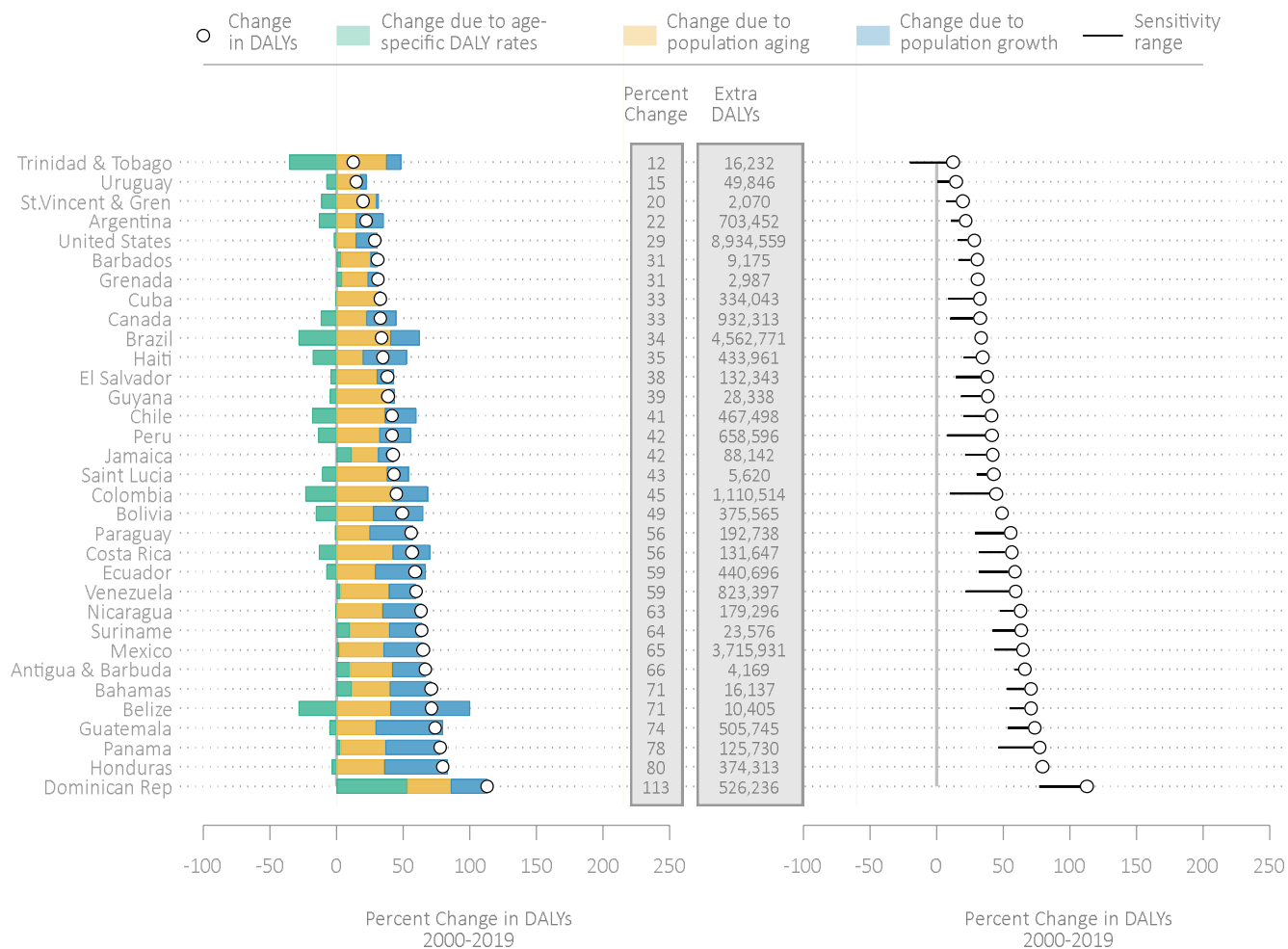


TABLE S10. Deaths/DALYs in 2000 and in 2019, and percentage change in deaths/DALYs between 2000 and 2019, with associated sensitivity ranges. Women only.

Country	Deaths or DALYs	Count in 2000	Count in 2019	Percentage change (2000 to 2019)	Lower bound of Sensitivity Range	Upper bound of Sensitivity Range
Antigua & Barbuda	deaths	138	237	72.6	60.9	82.7
Argentina	deaths	89,650	108,018	20.5	11.6	28.6
Bahamas	deaths	471	756	60.5	48.0	72.7
Barbados	deaths	983	1,215	23.6	11.4	35.8
Belize	deaths	273	422	54.7	43.5	64.3
Bolivia	deaths	13,659	25,672	88.0	85.6	90.0
Brazil	deaths	268,182	400,223	49.2	41.8	64.8
Canada	deaths	86,691	109,631	26.5	4.5	49.7
Chile	deaths	24,771	36,736	48.3	30.5	66.9
Colombia	deaths	47,912	75,608	57.8	30.5	88.7
Costa Rica	deaths	4,368	7,142	63.5	38.5	95.4
Cuba	deaths	26,031	38,093	46.3	22.4	71.8
Dominican Rep	deaths	7,024	21,208	201.9	164.9	232.8
Ecuador	deaths	13,159	22,723	72.7	53.1	91.5
El Salvador	deaths	6,084	9,324	53.3	32.4	72.8
Grenada	deaths	226	323	42.7	37.4	46.4
Guatemala	deaths	10,433	20,646	97.9	78.8	112.8
Guyana	deaths	1,418	2,229	57.2	42.7	70.0
Haiti	deaths	20,424	29,399	43.9	40.6	47.3
Honduras	deaths	7,572	15,816	108.9	105.2	111.8
Jamaica	deaths	5,162	6,693	29.7	16.9	39.5
LAC	deaths	1,810,813	2,403,526	32.7	17.7	50.5
Mexico	deaths	114,779	202,609	76.5	58.5	100.4
Nicaragua	deaths	5,183	9,593	85.1	66.0	101.2
Panama	deaths	3,061	5,817	90.0	60.1	120.4
Paraguay	deaths	5,290	8,733	65.1	42.9	86.4
Peru	deaths	25,218	40,720	61.5	31.8	87.6
Saint Lucia	deaths	322	425	31.9	20.9	40.7
St Vincent & Gren	deaths	273	302	10.9	3.7	17.6
Suriname	deaths	716	1,299	81.6	60.0	99.6
Trinidad & Tobago	deaths	3,170	2,970	-6.3	-22.8	10.4
United States	deaths	980,819	1,140,522	16.3	1.5	33.3
Uruguay	deaths	11,033	12,834	16.3	3.7	28.0
Venezuela	deaths	26,321	45,586	73.2	44.2	104.5
Antigua & Barbuda	daly	4,544	7,456	64.1	59.1	66.3
Argentina	daly	2,456,069	2,900,212	18.1	10.7	22.1
Bahamas	daly	16,618	27,450	65.2	52.8	70.9
Barbados	daly	22,544	28,362	25.8	16.4	30.5
Belize	daly	10,641	17,658	65.9	54.7	71.0
Bolivia	daly	488,598	727,765	48.9	48.2	49.2
Brazil	daly	10,682,686	14,087,458	31.9	29.0	33.5
Canada	daly	2,213,228	2,761,028	24.8	10.3	32.8
Chile	daly	849,167	1,140,456	34.3	20.3	41.3
Colombia	daly	1,847,181	2,462,293	33.3	9.8	44.8
Costa Rica	daly	167,825	249,924	48.9	31.7	56.5
Cuba	daly	784,282	976,098	24.5	9.1	32.7
Dominican Rep	daly	321,822	653,520	103.1	77.2	112.9
Ecuador	daly	536,179	807,494	50.6	31.6	58.8
El Salvador	daly	247,904	324,828	31.0	14.5	38.1

Grenada	daly	7,120	9,285	30.4	29.3	30.9
Guatemala	daly	493,738	827,900	67.7	53.8	73.8
Guyana	daly	54,298	71,694	32.0	18.4	38.5
Haiti	daly	771,243	1,018,449	32.1	20.7	34.7
Honduras	daly	293,938	524,720	78.5	74.2	79.6
Jamaica	daly	153,786	208,368	35.5	21.3	42.2
LAC	daly	55,559,468	72,778,828	31.0	21.2	36.5
Mexico	daly	4,529,625	7,115,511	57.1	43.8	64.8
Nicaragua	daly	202,100	320,284	58.5	47.5	63.1
Panama	daly	117,126	196,799	68.0	46.5	77.6
Paraguay	daly	240,579	356,603	48.2	29.0	55.7
Peru	daly	1,108,117	1,463,268	32.1	8.2	41.6
Saint Lucia	daly	9,701	13,464	38.8	30.2	43.0
St Vincent & Gren	daly	7,929	9,172	15.7	7.7	19.8
Suriname	daly	26,606	41,796	57.1	42.1	63.6
Trinidad & Tobago	daly	100,624	101,669	1.0	-19.9	12.5
United States	daly	25,497,841	31,520,030	23.6	15.8	28.5
Uruguay	daly	262,358	287,834	9.7	0.6	14.7
Venezuela	daly	1,033,451	1,519,982	47.1	22.0	59.4

FIGURE S11a. Contribution of changes in population growth, population aging, and rates of age-specific morbidity to the percentage change in deaths due to NCDs, 2000 to 2019, with associated sensitivity ranges for overall percentage change in deaths. Men only. Overall change in deaths based on point estimate.

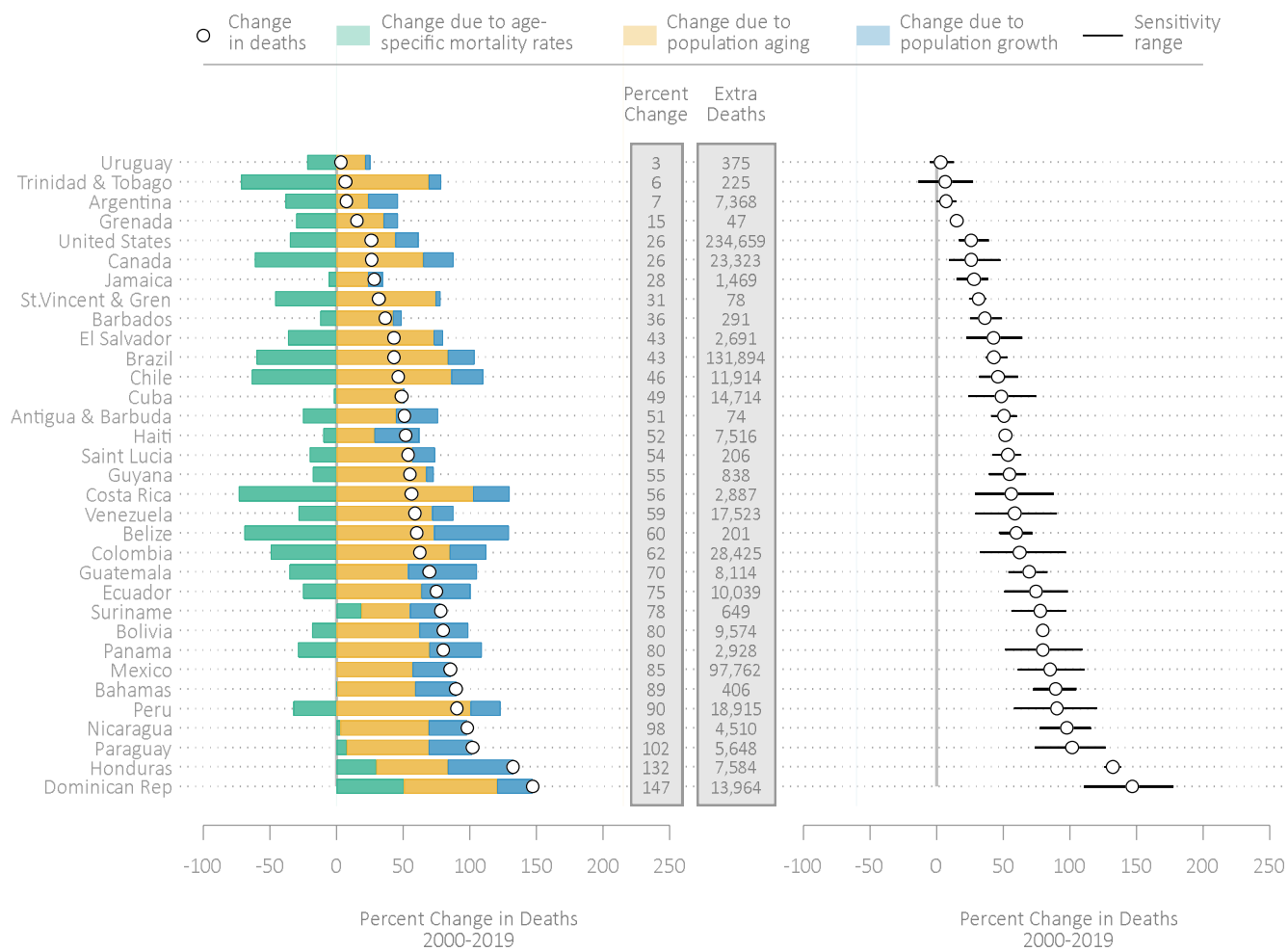


FIGURE S11b. Contribution of changes in population growth, population aging, and rates of age-specific morbidity to the percentage change in deaths due to NCDs, 2000 to 2019, with associated sensitivity ranges for overall percentage change in deaths. Men only. Overall change in deaths based on lower bound of WHO uncertainty interval.

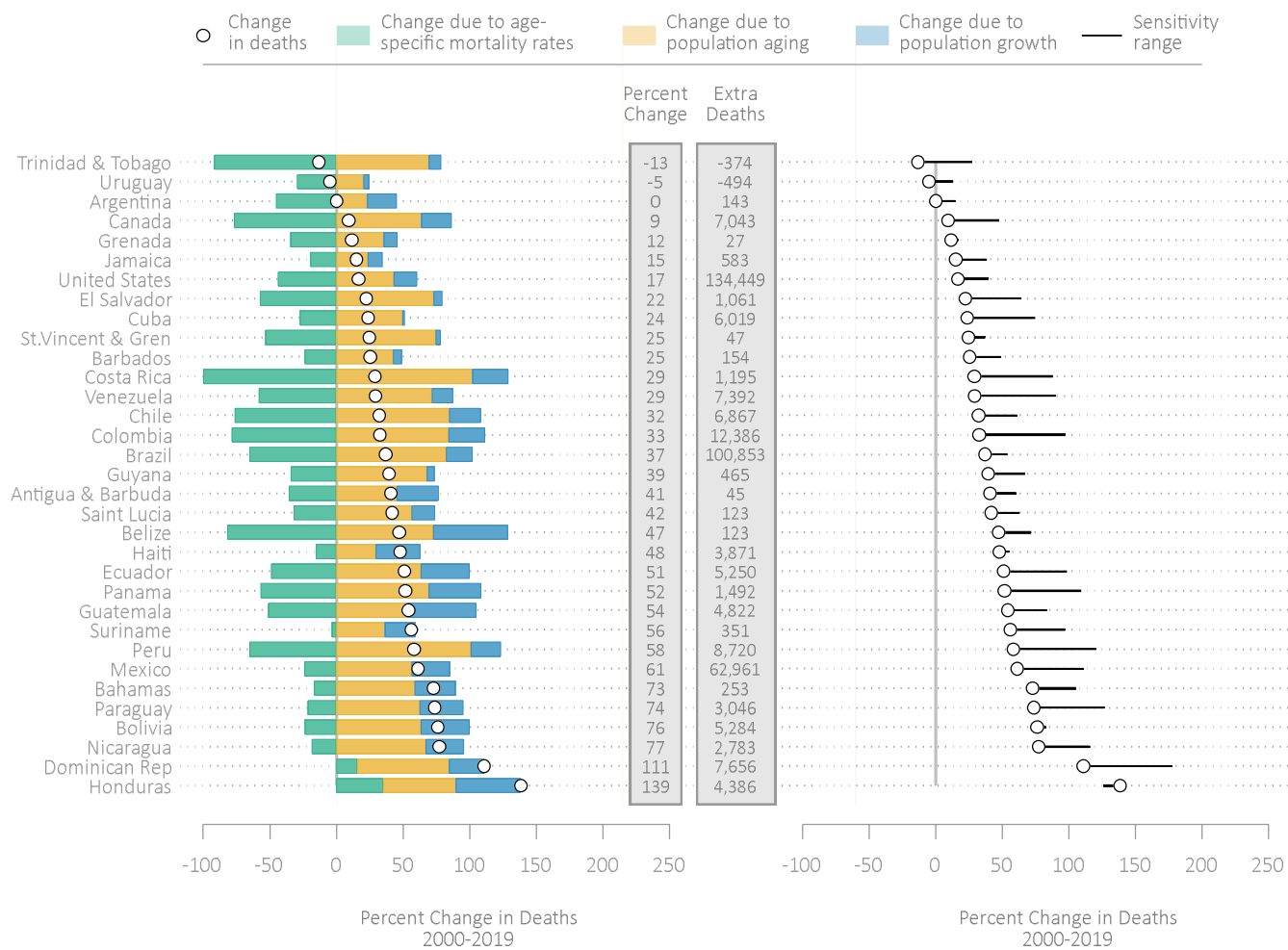


FIGURE S11c. Contribution of changes in population growth, population aging, and rates of age-specific morbidity to the percentage change in deaths due to NCDs, 2000 to 2019, with associated sensitivity ranges for overall percentage change in deaths. Men only. Overall change in deaths based on upper bound of WHO uncertainty interval.

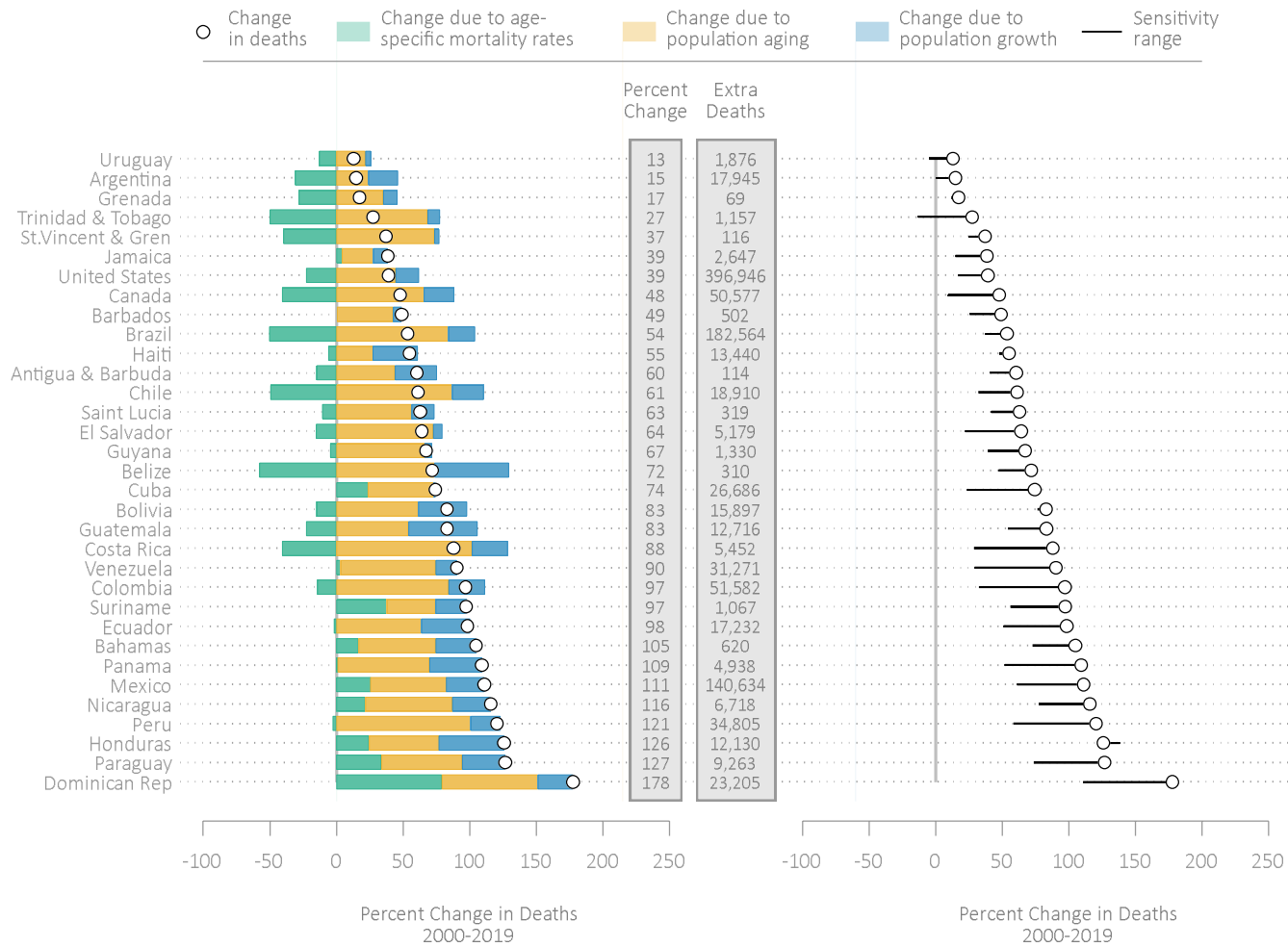


FIGURE S11d. Contribution of changes in population growth, population aging, and rates of age-specific morbidity to the percentage change in DALYs due to NCDs, 2000 to 2019, with associated sensitivity ranges for overall percentage change in DALYs. Men only. Overall change in DALYs based on point estimate.

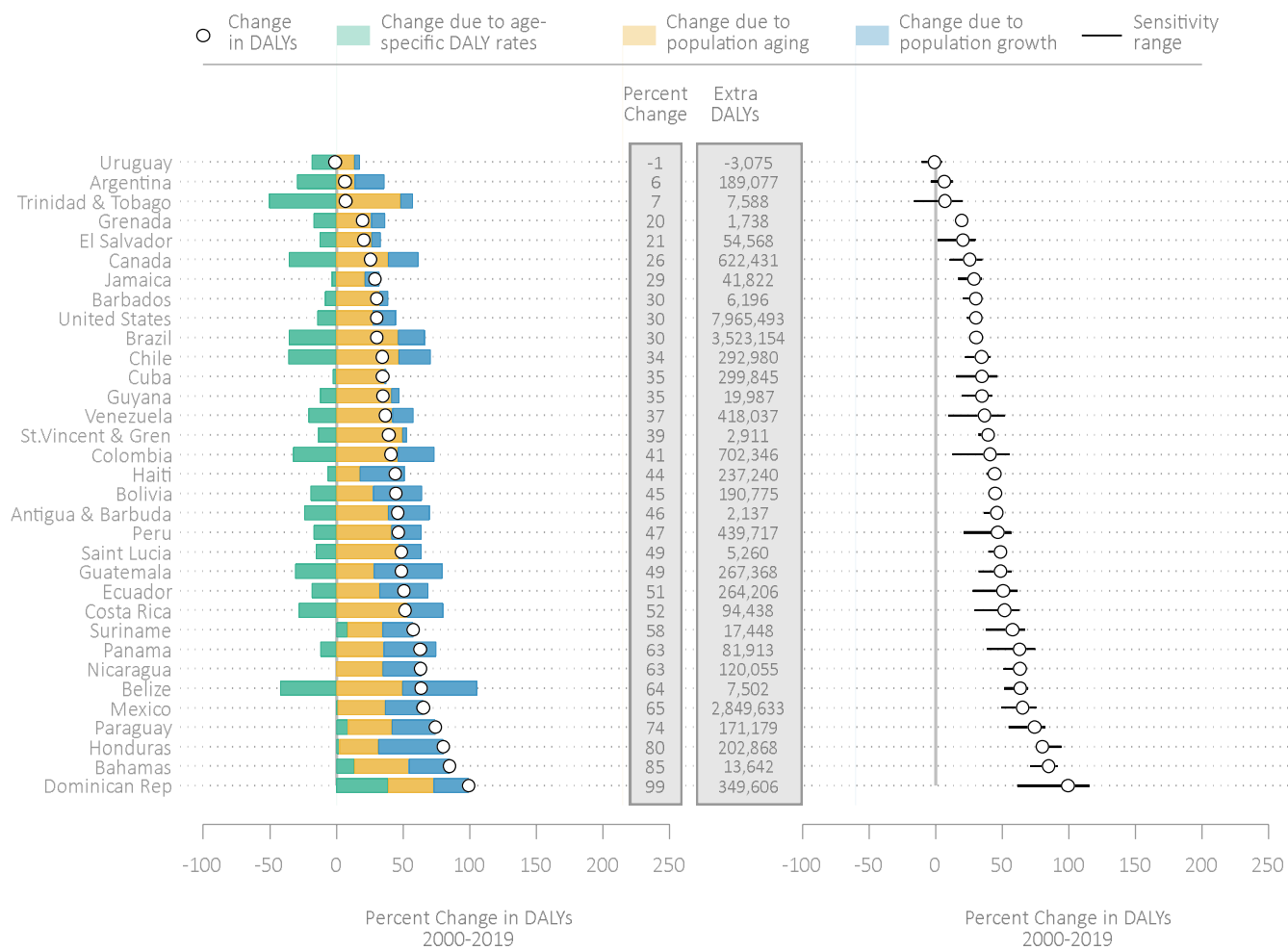


FIGURE S11e. Contribution of changes in population growth, population aging, and rates of age-specific morbidity to the percentage change in DALYs due to NCDs, 2000 to 2019, with associated sensitivity ranges for overall percentage change in DALYs. Men only. Overall change in DALYs based on lower bound of WHO uncertainty interval.

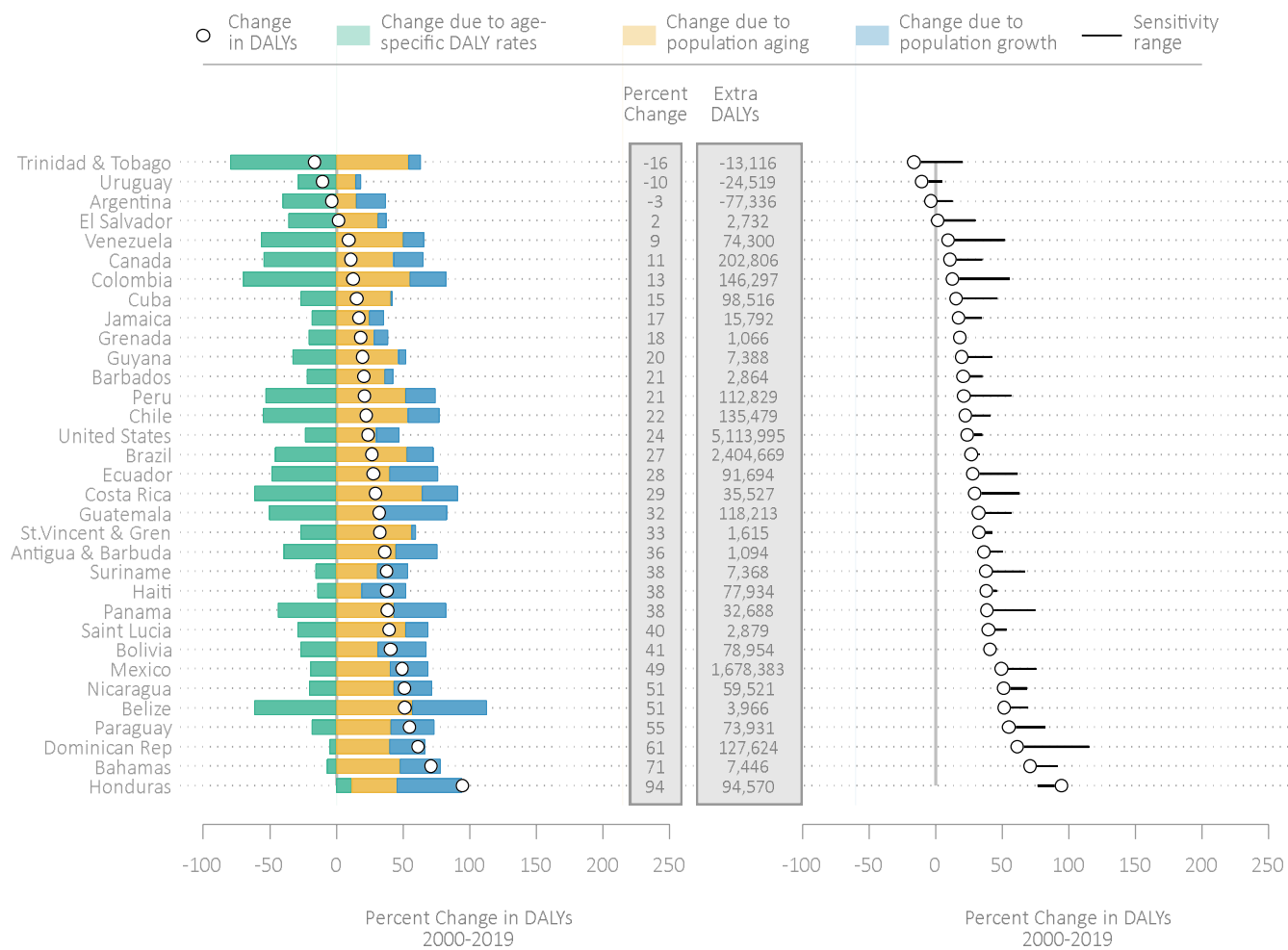


FIGURE S11f. Contribution of changes in population growth, population aging, and rates of age-specific morbidity to the percentage change in DALYs due to NCDs, 2000 to 2019, with associated sensitivity ranges for overall percentage change in DALYs. Men only. Overall change in DALYs based on upper bound of WHO uncertainty interval.

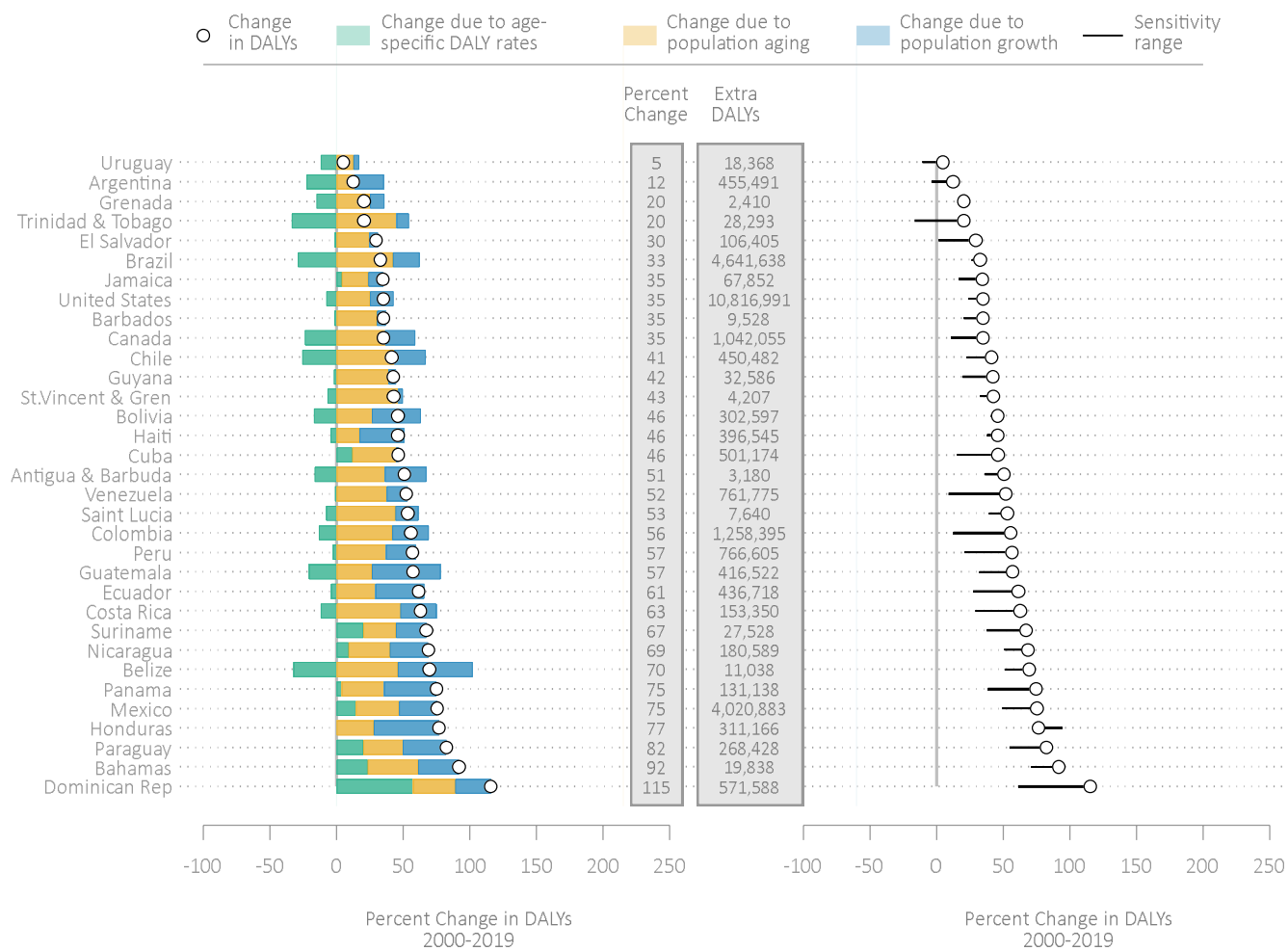


TABLE S11. Deaths/DALYs in 2000 and in 2019, and percentage change in deaths/DALYs between 2000 and 2019, with associated sensitivity ranges. Men only.

Country	Deaths or DALYs	Count in 2000	Count in 2019	Percentage change (2000 to 2019)	Lower bound of Sensitivity Range	Upper bound of Sensitivity Range
Antigua & Barbuda	deaths	147	222	50.7	40.9	60.4
Argentina	deaths	101,492	108,861	7.3	0.2	14.9
Bahamas	deaths	455	861	89.4	72.9	105.0
Barbados	deaths	802	1,093	36.4	25.4	49.0
Belize	deaths	337	539	60.0	47.2	71.8
Bolivia	deaths	11,991	21,565	79.8	76.3	83.0
Brazil	deaths	306,811	438,705	43.0	37.0	53.5
Canada	deaths	89,424	112,747	26.1	9.3	47.8
Chile	deaths	25,790	37,705	46.2	32.3	61.2
Colombia	deaths	45,555	73,981	62.4	32.7	97.1
Costa Rica	deaths	5,149	8,036	56.1	29.1	87.9
Cuba	deaths	30,225	44,940	48.7	23.8	74.4
Dominican Rep	deaths	9,502	23,466	147.0	111.0	177.7
Ecuador	deaths	13,438	23,478	74.7	51.1	98.4
El Salvador	deaths	6,277	8,968	42.9	22.4	64.2
Grenada	deaths	312	359	15.2	11.6	17.4
Guatemala	deaths	11,666	19,780	69.6	54.1	83.2
Guyana	deaths	1,532	2,371	54.8	39.5	67.3
Haiti	deaths	14,529	22,046	51.7	47.9	55.0
Honduras	deaths	5,731	13,315	132.3	138.5	125.9
Jamaica	deaths	5,211	6,681	28.2	15.1	38.5
LAC	deaths	1,786,848	2,453,675	37.3	25.1	53.0
Mexico	deaths	114,696	212,458	85.2	61.2	111.1
Nicaragua	deaths	4,611	9,121	97.8	77.3	115.8
Panama	deaths	3,664	6,592	79.9	51.8	109.3
Paraguay	deaths	5,546	11,195	101.8	73.8	126.8
Peru	deaths	20,962	39,877	90.2	58.3	120.6
Saint Lucia	deaths	386	593	53.7	41.8	62.9
St Vincent & Gren	deaths	248	326	31.5	24.6	37.3
Suriname	deaths	833	1,483	78.0	56.1	97.3
Trinidad & Tobago	deaths	3,481	3,706	6.5	-13.2	27.5
United States	deaths	904,254	1,138,914	26.0	16.7	39.2
Uruguay	deaths	11,971	12,346	3.1	-5.0	13.0
Venezuela	deaths	29,821	47,345	58.8	29.3	90.3
Antigua & Barbuda	daly	4,645	6,782	46.0	36.3	50.7
Argentina	daly	2,938,620	3,127,698	6.4	-3.5	12.5
Bahamas	daly	16,070	29,713	84.9	70.9	91.7
Barbados	daly	20,548	26,745	30.2	20.7	35.0
Belize	daly	11,801	19,303	63.6	51.4	69.5
Bolivia	daly	426,769	617,545	44.7	40.7	45.9
Brazil	daly	11,579,757	15,102,912	30.4	26.7	32.8
Canada	daly	2,431,411	3,053,843	25.6	10.8	35.0
Chile	daly	849,325	1,142,306	34.5	22.3	41.2
Colombia	daly	1,715,391	2,417,737	40.9	12.5	55.7
Costa Rica	daly	182,599	277,038	51.7	29.3	62.8
Cuba	daly	864,984	1,164,830	34.7	15.3	46.2
Dominican Rep	daly	351,705	701,312	99.4	61.2	115.5
Ecuador	daly	520,865	785,071	50.7	27.7	61.4
El Salvador	daly	265,395	319,964	20.6	1.6	29.5

Grenada	daly	8,837	10,576	19.7	18.2	20.4
Guatemala	daly	547,924	815,292	48.8	32.3	57.1
Guyana	daly	57,369	77,357	34.8	19.5	42.4
Haiti	daly	534,767	772,007	44.4	37.9	45.9
Honduras	daly	253,017	455,886	80.2	94.5	76.7
Jamaica	daly	144,532	186,355	28.9	17.0	34.5
LAC	daly	57,450,940	76,911,042	33.9	24.1	40.0
Mexico	daly	4,365,946	7,215,580	65.3	49.4	75.4
Nicaragua	daly	189,784	309,840	63.3	51.1	68.7
Panama	daly	130,200	212,113	62.9	38.4	74.8
Paraguay	daly	230,138	401,318	74.4	55.0	82.4
Peru	daly	942,997	1,382,714	46.6	21.1	56.7
Saint Lucia	daly	10,809	16,070	48.7	39.6	53.2
St Vincent & Gren	daly	7,407	10,319	39.3	32.6	42.7
Suriname	daly	30,239	47,688	57.7	37.8	67.2
Trinidad & Tobago	daly	109,395	116,984	6.9	-16.3	20.5
United States	daly	26,261,956	34,227,449	30.3	23.7	35.0
Uruguay	daly	309,752	306,677	-1.0	-10.4	4.8
Venezuela	daly	1,135,984	1,554,021	36.8	9.2	52.0