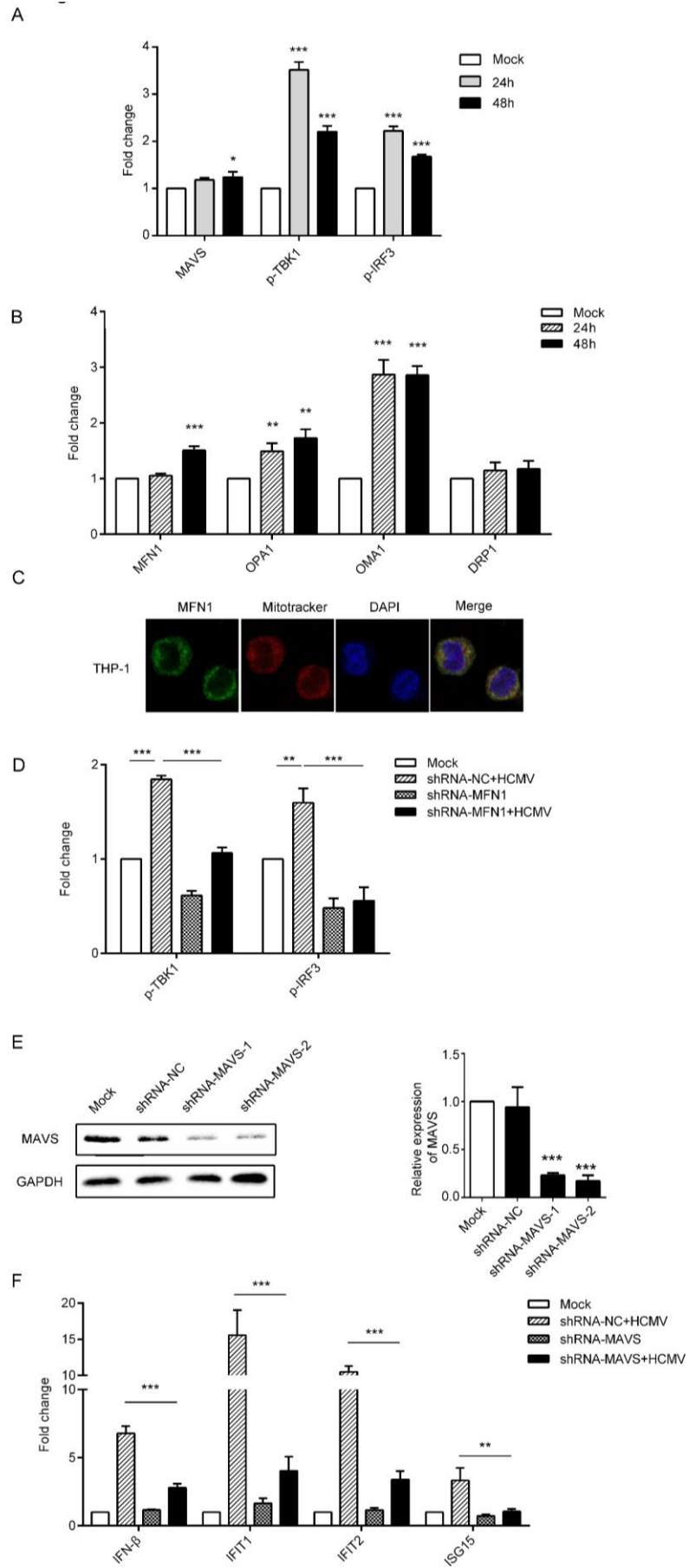
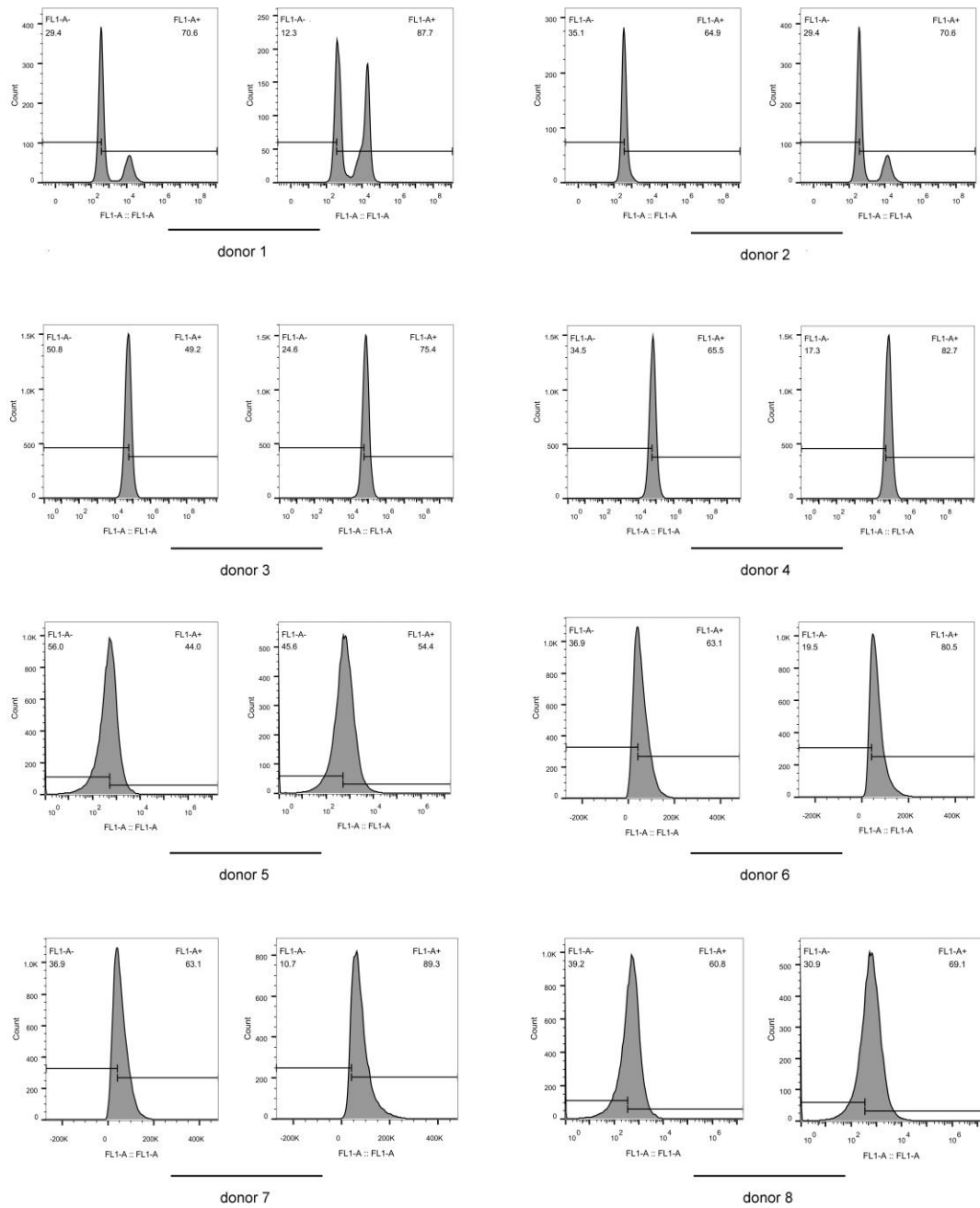


Supplementary Fig. 1:
Heatmap analysis of mitochondrial related genes in control and THP-1 cells infected with HCMV (MOI=5) for 48h (data from GSE132048).



Supplementary Fig.2:

A. Quantitative analysis of the relative protein levels of MAVS, p-TBK1 and p-IRF3 in HCMV-infected THP-1 cells according to Fig.1B. **B.** Quantitative analysis of the relative protein levels of MFN1, OPA1, OMA1 and DRP1 in HCMV-infected THP-1 cells according to Fig.1D. **C.** THP-1 cells were stained with MitoTracker (Mitochondria) and anti-MFN1 antibody. Nuclei were visualized by staining with DAPI throughout this study. **D.** Quantitative analysis of the relative protein levels of p-TBK1 and p-IRF3 in control and MAVS-knockdown THP-1 cells according to Fig.2D. **E.** Western blot of MAVS in lysates from control and MAVS-knockdown THP-1 cells. **F.** The control shRNA treated and MAVS-knockdown THP-1 cells infected with HCMV (MOI=5) for 48 h, analyzed for *IFN- β* , *IFIT1*, *IFIT2* and *ISG15* mRNA expression relative to GAPDH mRNA by qPCR. Data are shown as the mean \pm SEM of three independent experiments. NS (non-significant), $P>0.05$; * $P<0.05$; ** $P<0.01$; *** $P<0.001$.



Supplementary Fig. 3:
 Detection of MFN1 expression in peripheral blood mononuclear cells of 8 donors infected with HCMV by flow cytometry