

Fig. S1 - Maximum likelihood phylogeny of 485 *A. baumannii* strains: 95 outbreak genomes (red labels), 23 surveillance genomes (green labels) and 367 PATRIC genomes (gray labels) inferred on coreSNPs with RAxML. The crown shows the biofilm production levels of each strain: no producers (gray), weak producers (yellow), moderate producers (orange), strong producers (red). This figure was obtained using iTol [<https://itol.embl.de/>].

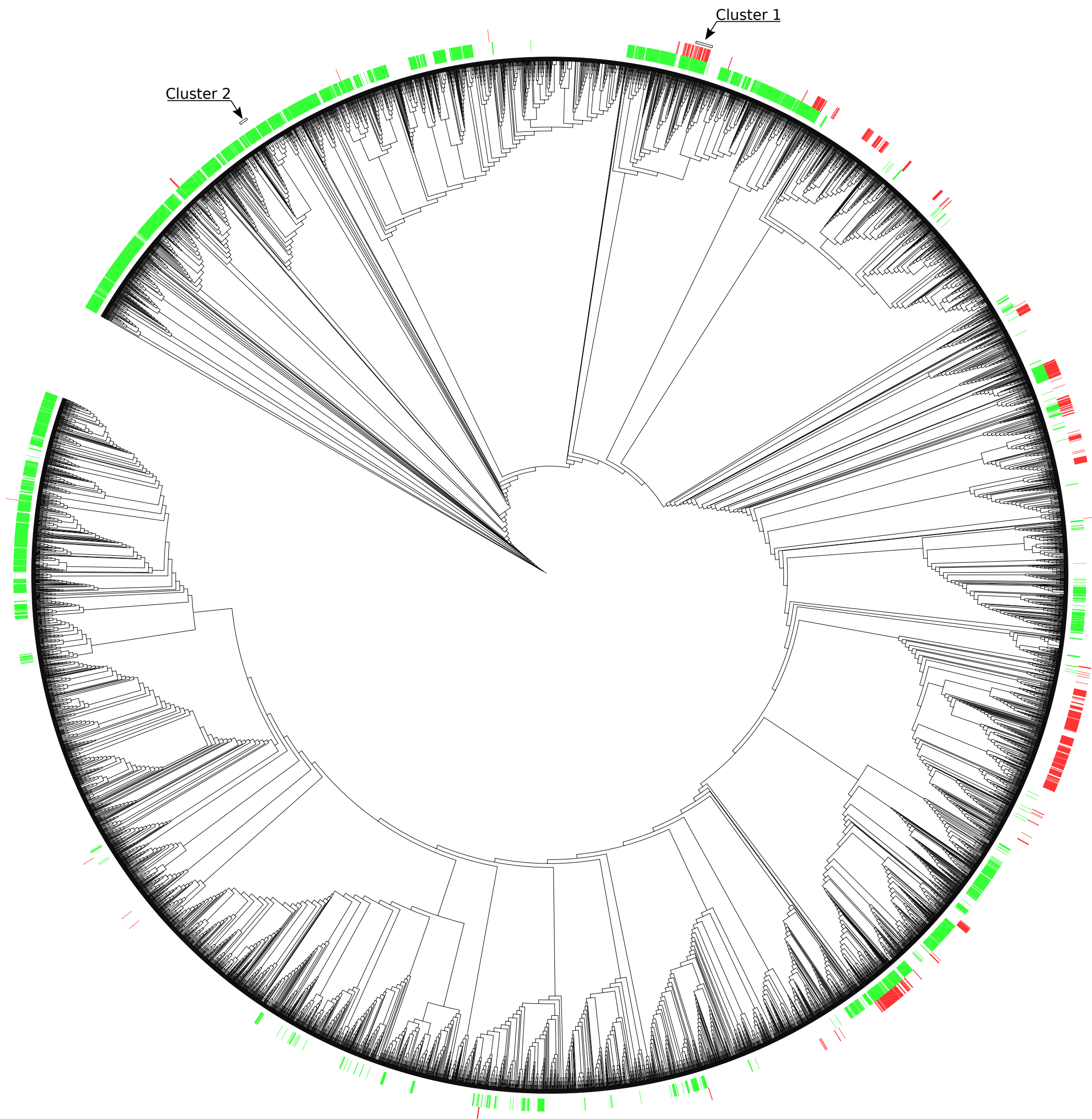


Fig. S2 - Global phylogeny of 8969 strains of *A. baumannii*. The presence of 8 kb plasmid (green labels) and 100 kb plasmid (red labels) were determined by genomic analyses. This figure was obtained using iTol [<https://itol.embl.de/>].