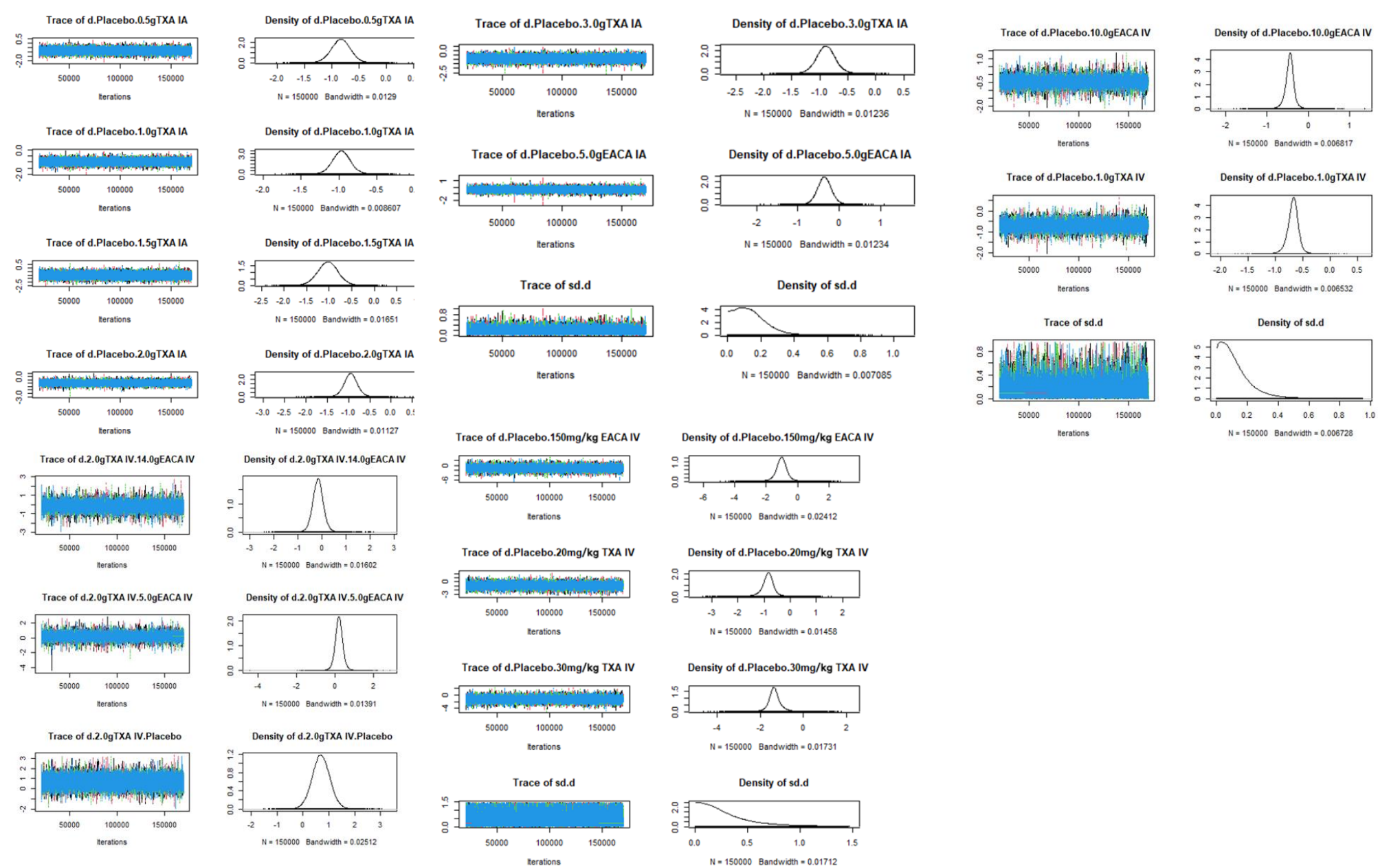
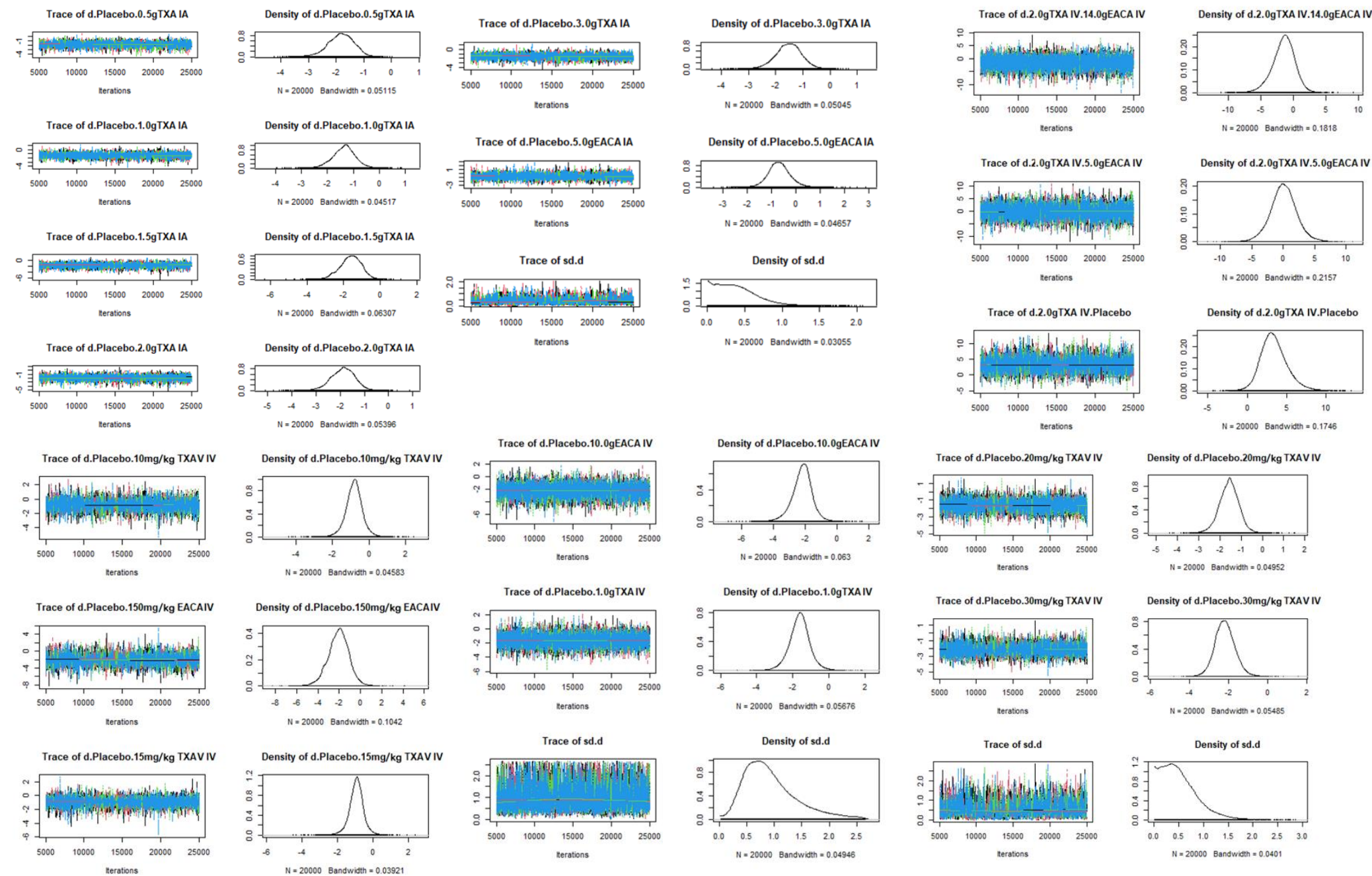


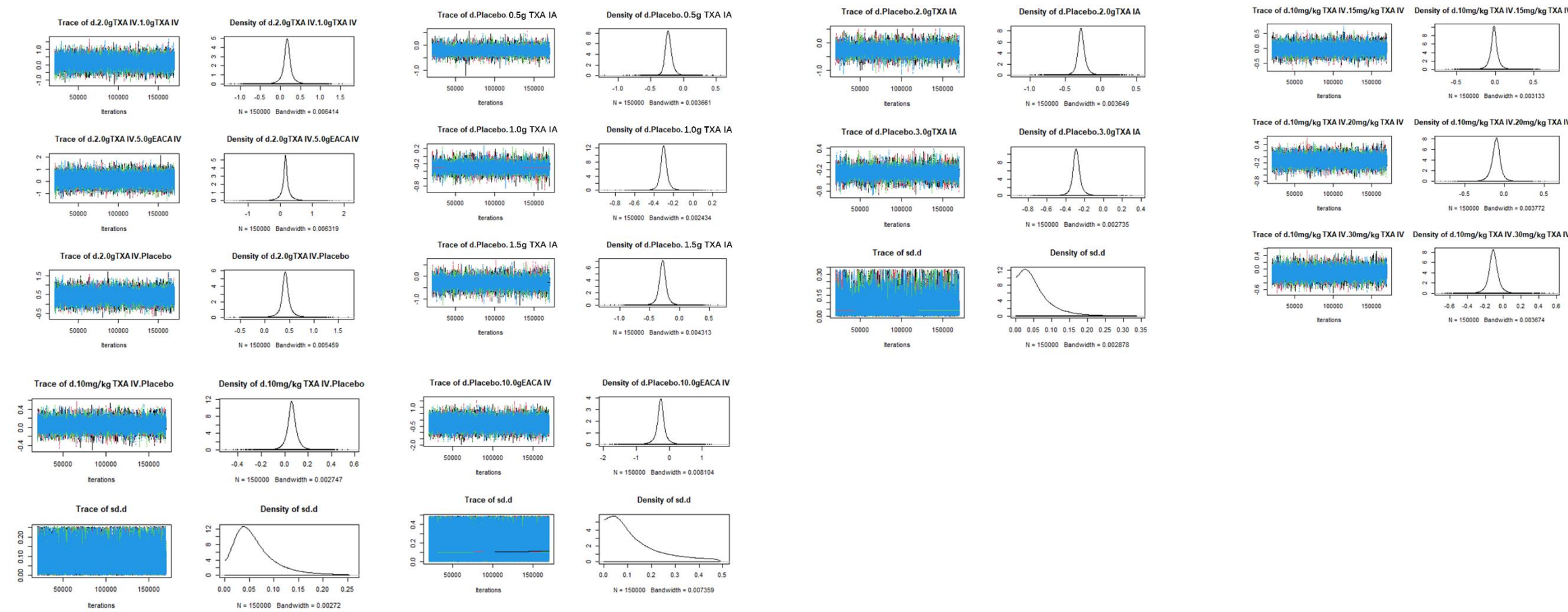
Supplementary Material 4 (A) a. Trace plots and density plots of total blood loss after TKA in intra-articular and intravenous (g or mg/kg) administrations of TXA and EACA.



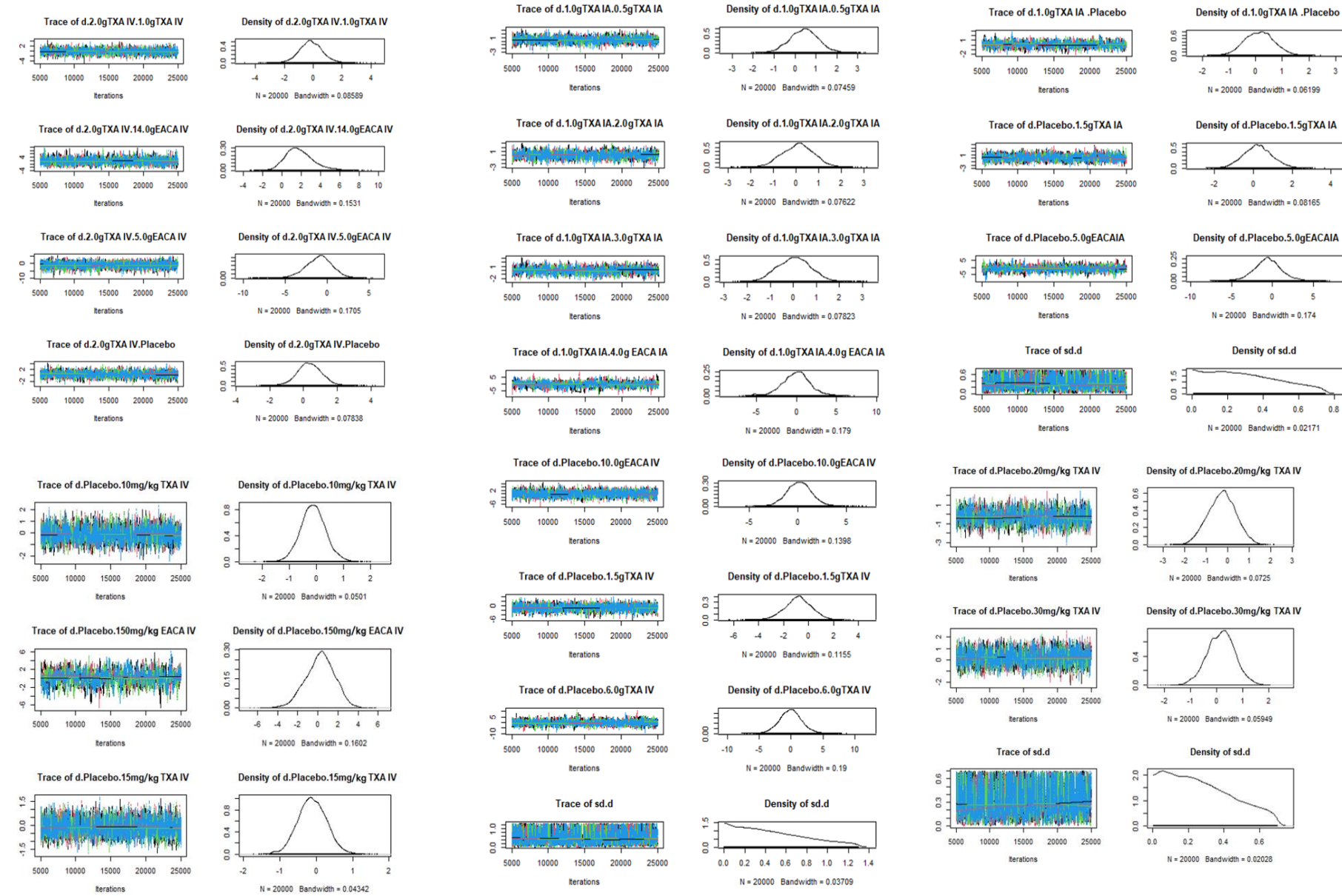
Supplementary Material 4 (A) b. Trace plots and density plots of HB drop after TKA in intra-articular and intravenous (g or mg/kg) administrations of TXA and EACA.



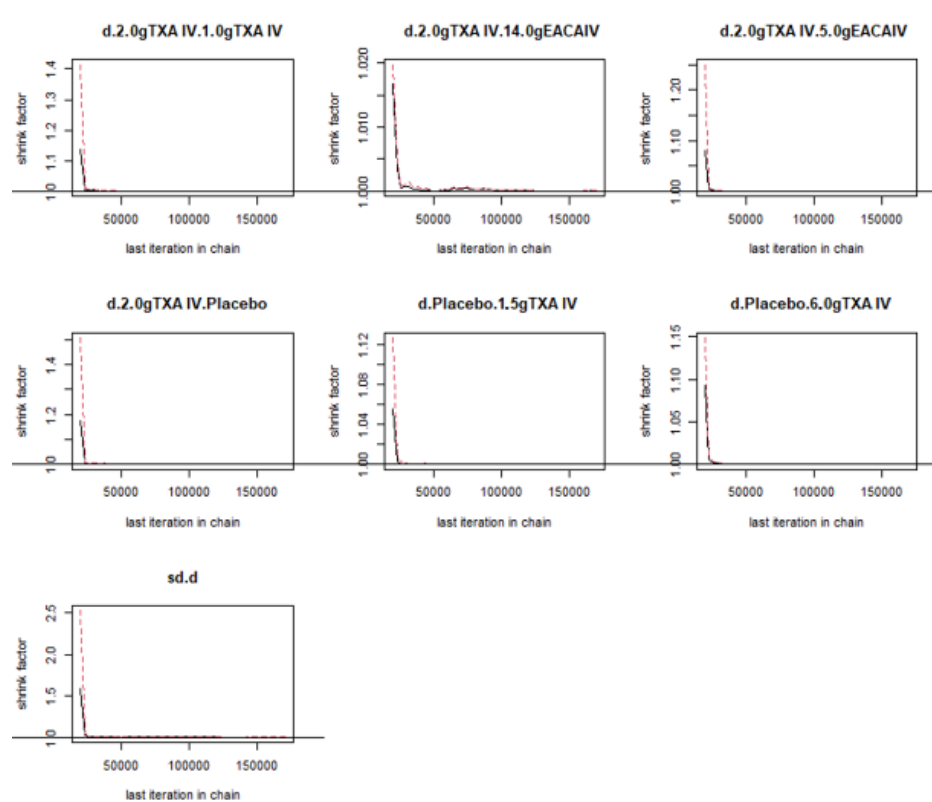
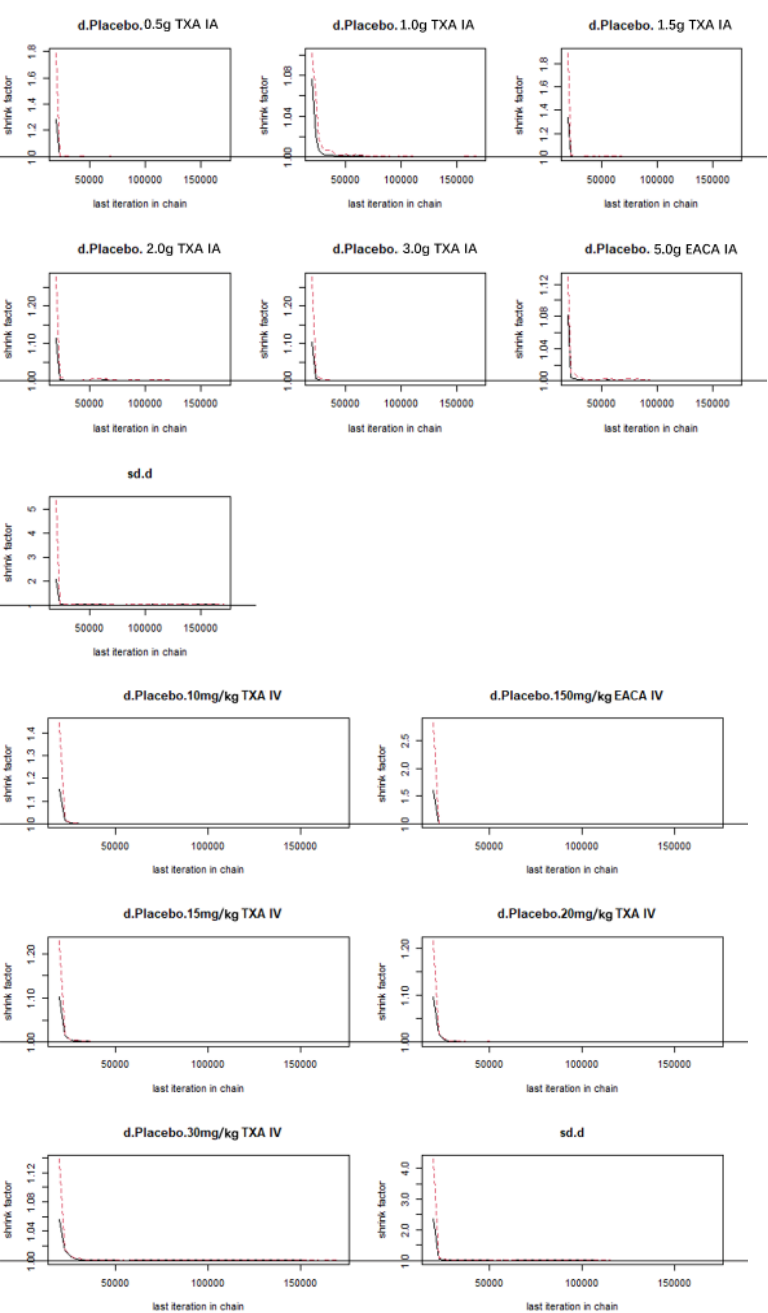
Supplementary Material 4 (A) c. Trace plots and density plots of transfusion rates after TKA in intra-articular and intravenous (g or mg/kg) administrations of TXA and EACA.



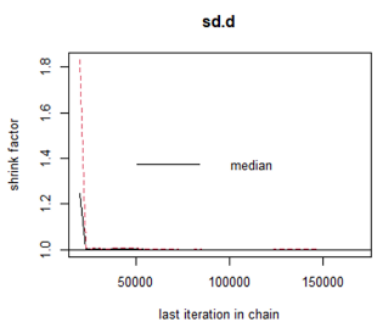
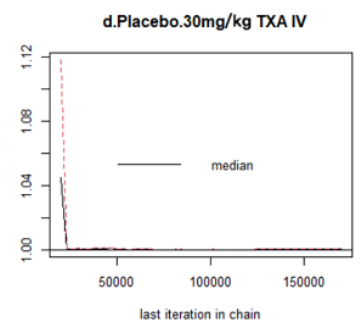
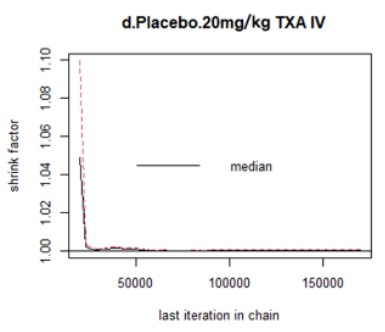
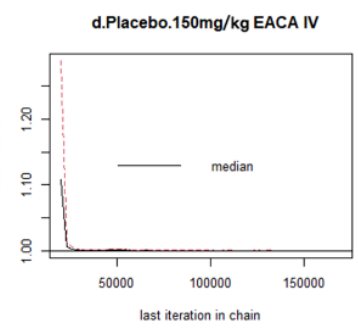
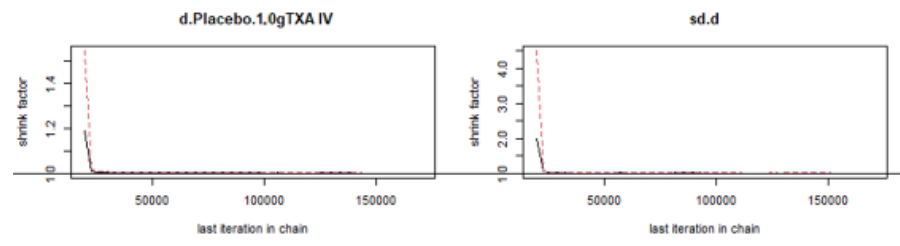
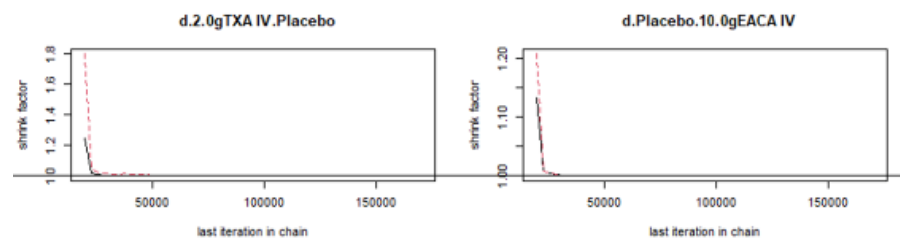
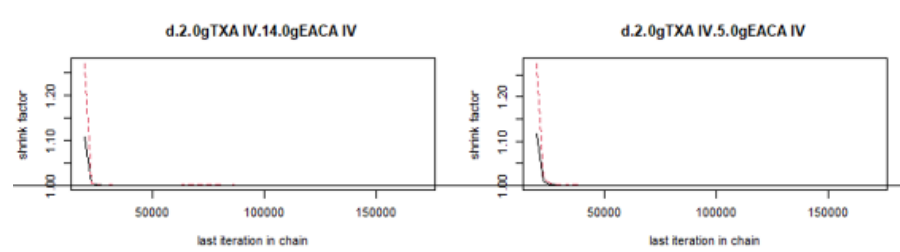
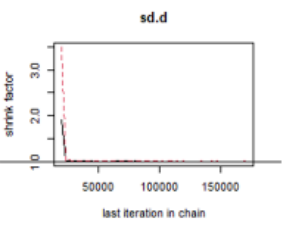
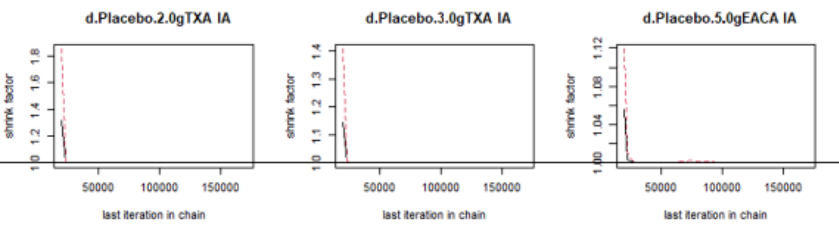
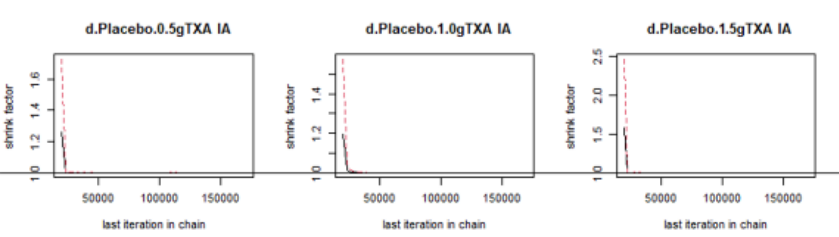
Supplementary Material 4 (A) d. Trace plots and density plots of drainage volume after TKA in intra-articular and intravenous (g or mg/kg) administrations of TXA and EACA.



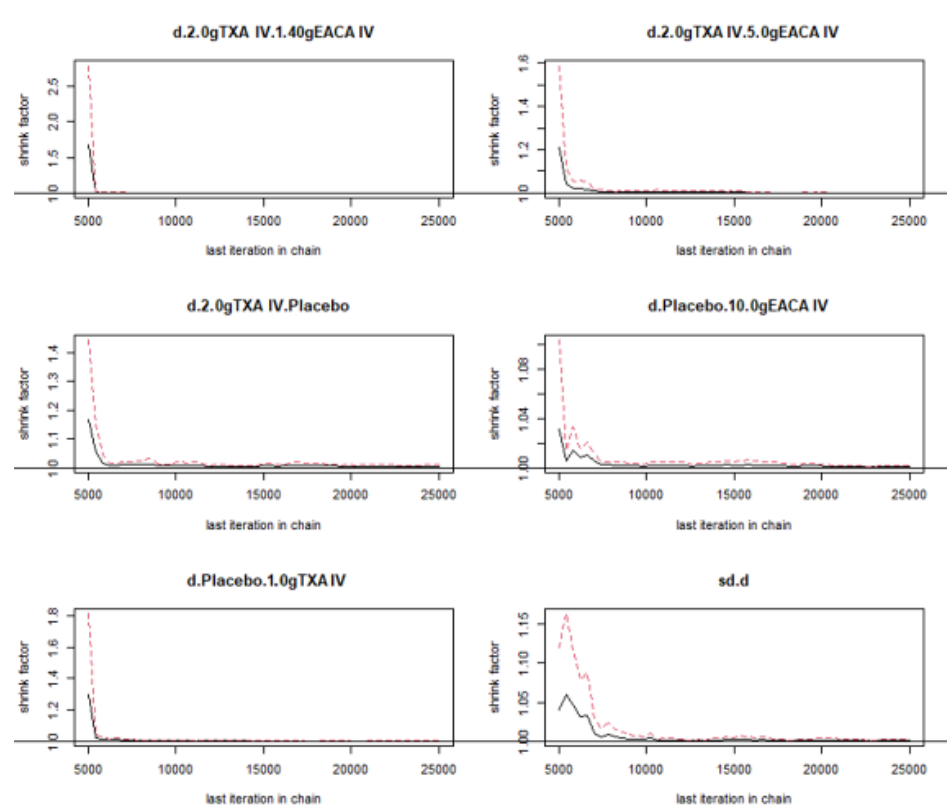
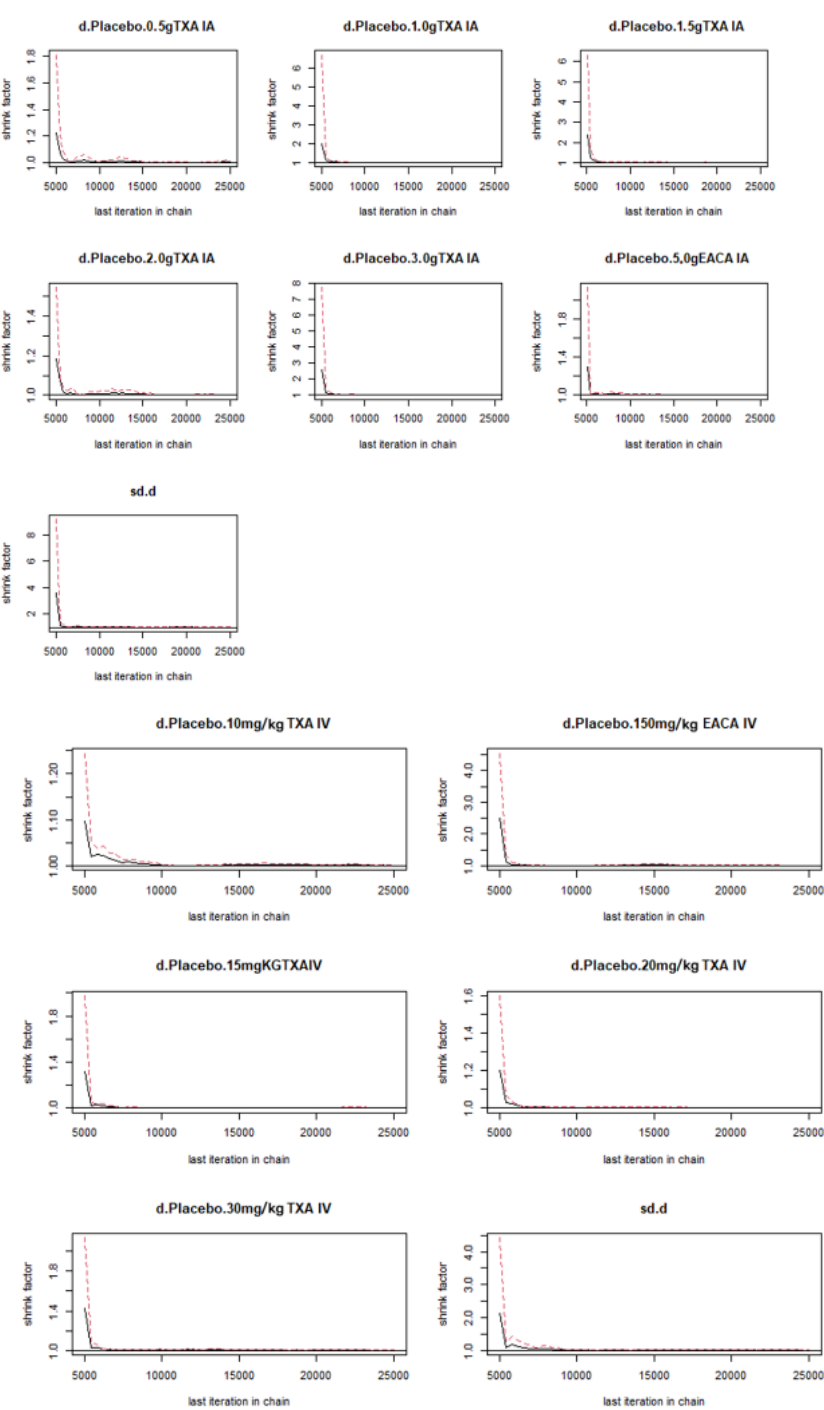
Supplementary Material 4 (A) e. Trace plots and density plots of PE/DVT rates after TKA in intra-articular and intravenous (g or mg/kg) administrations of TXA and EACA.



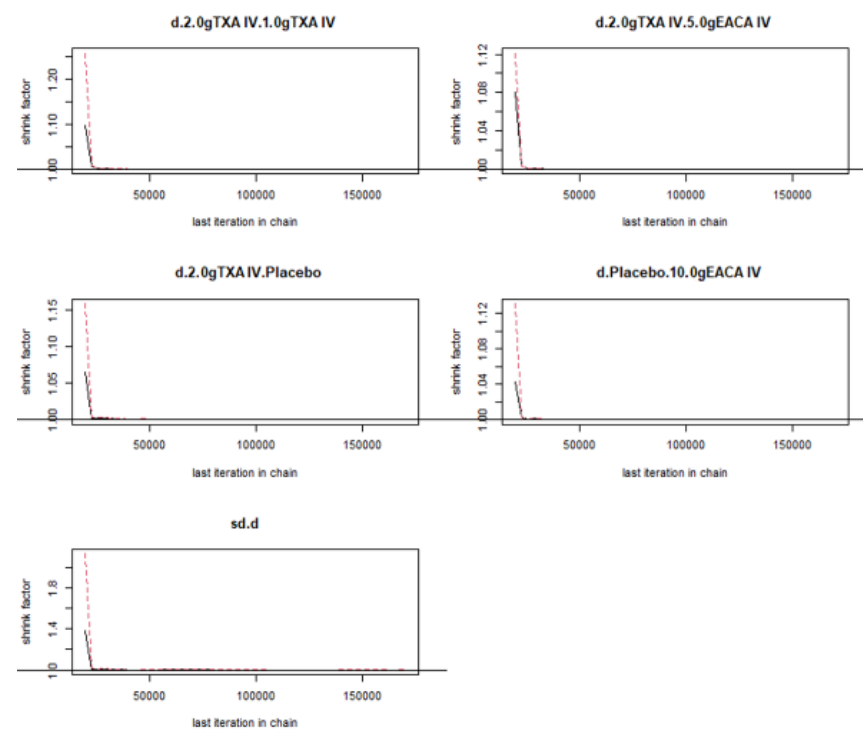
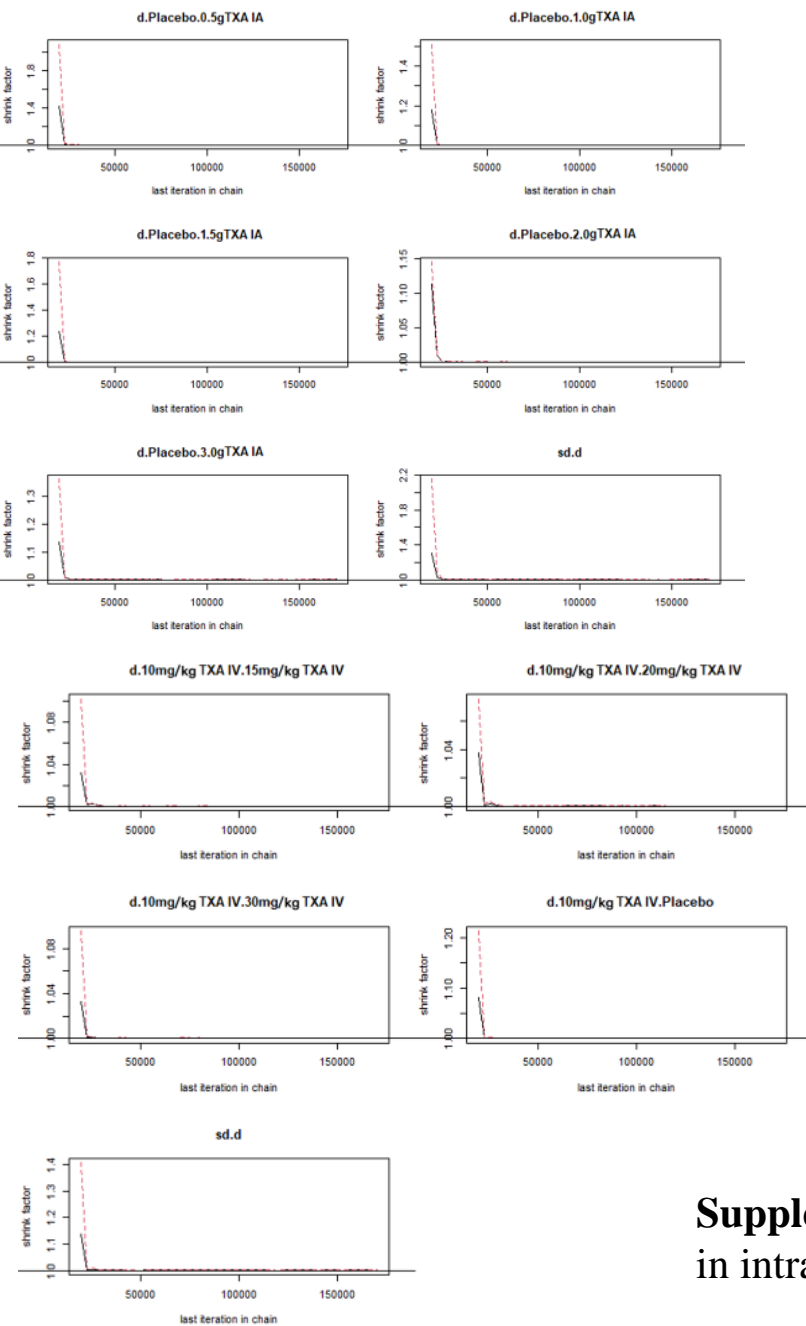
Supplementary Material 4 (B) a. Brooks-Gelman-Rubin plots of total blood loss after TKA in intra-articular and intravenous (g or mg/kg) administrations of TXA and EACA.



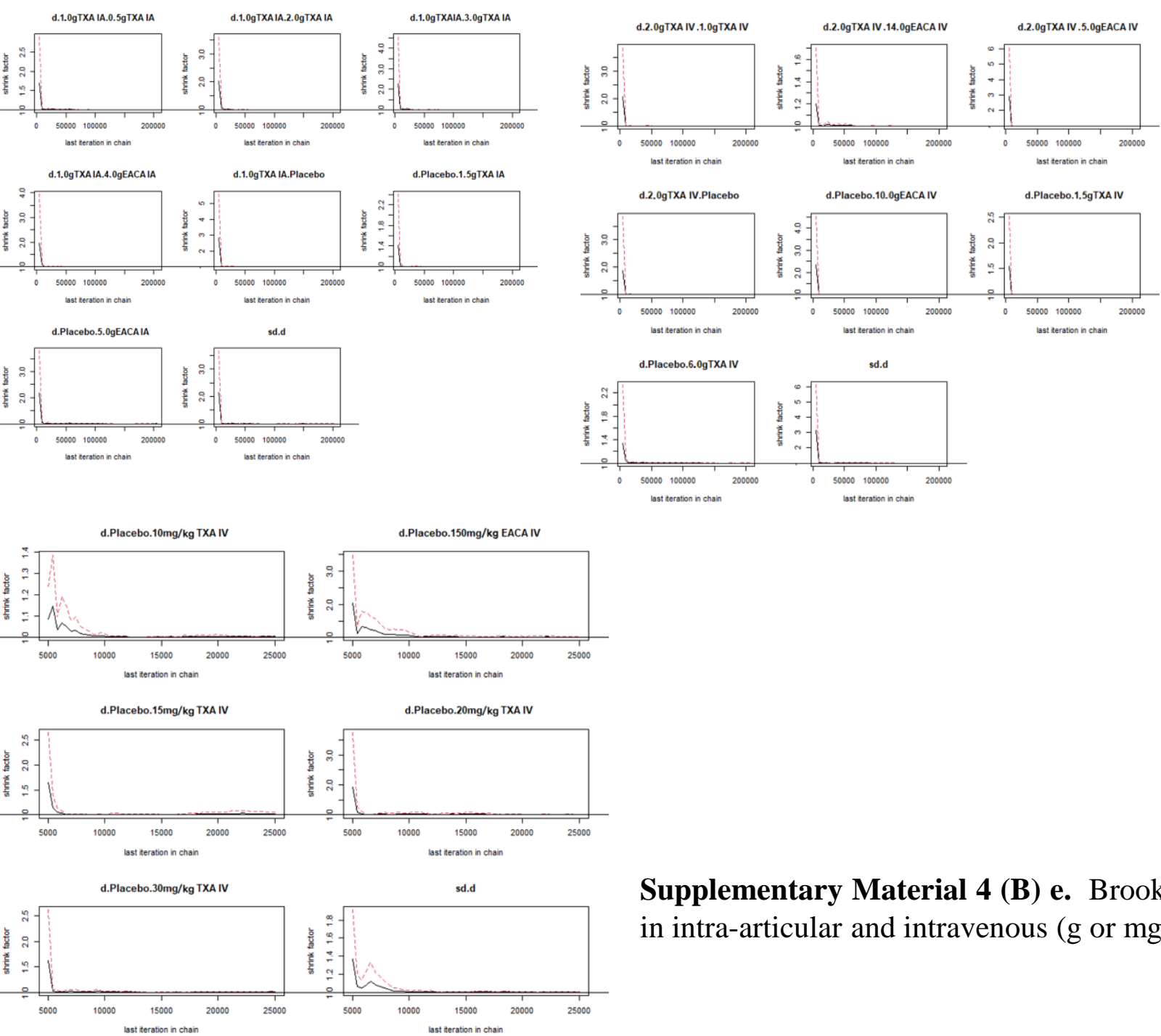
Supplementary Material 4 (B) b. Brooks-Gelman-Rubin plots of HB drop after TKA in intra-articular and intravenous (g or mg/kg) administrations of TXA and EACA.



Supplementary Material 4 (B) c. Brooks-Gelman-Rubin plots of transfusion rates after TKA in intra-articular and intravenous (g or mg/kg) administrations of TXA and EACA.

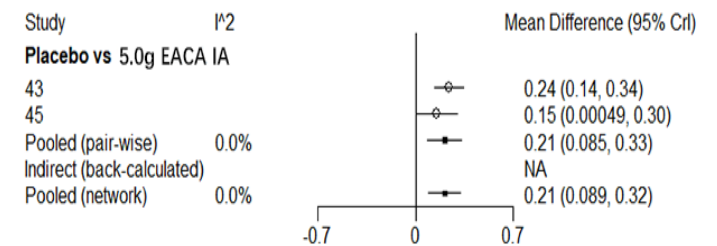
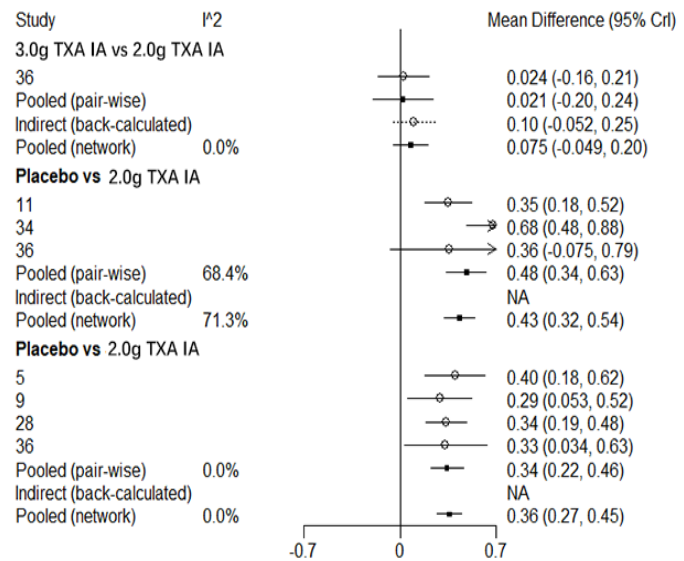
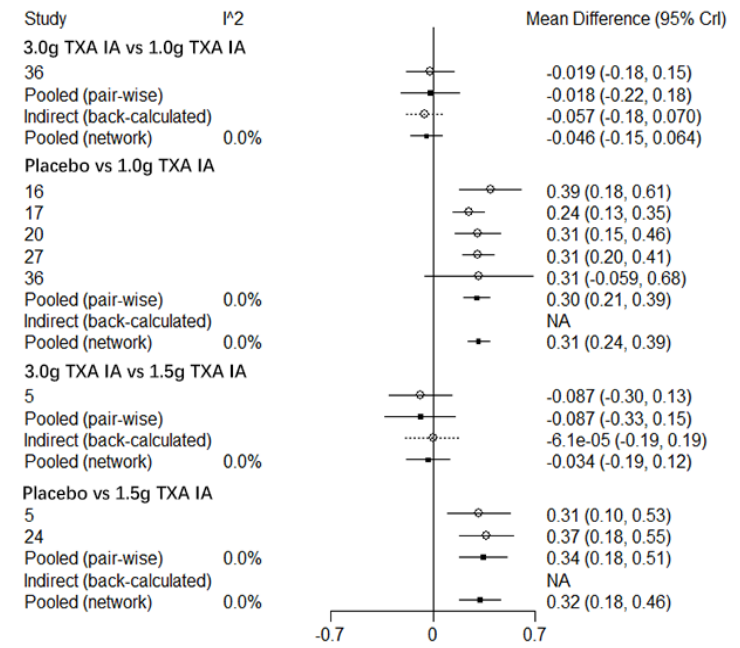
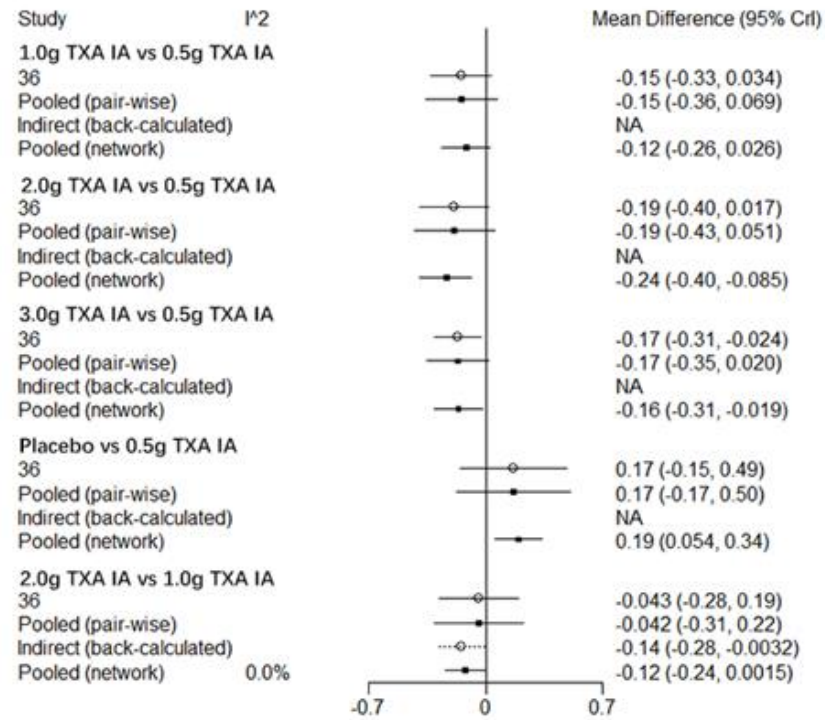


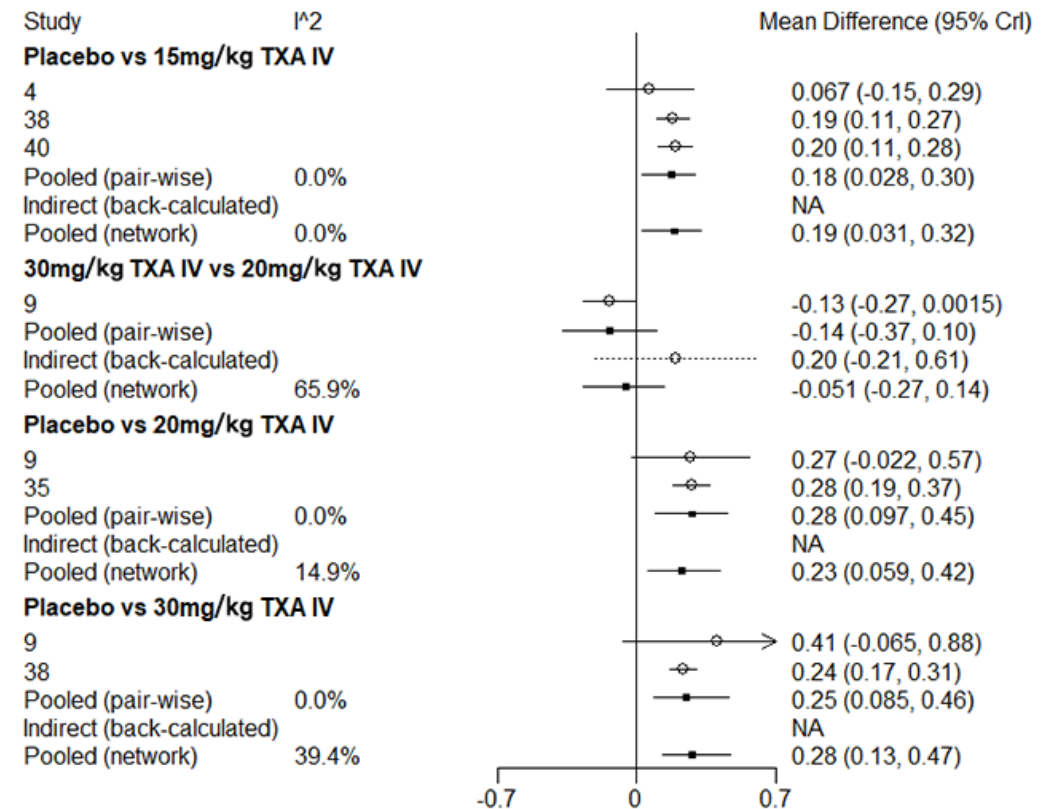
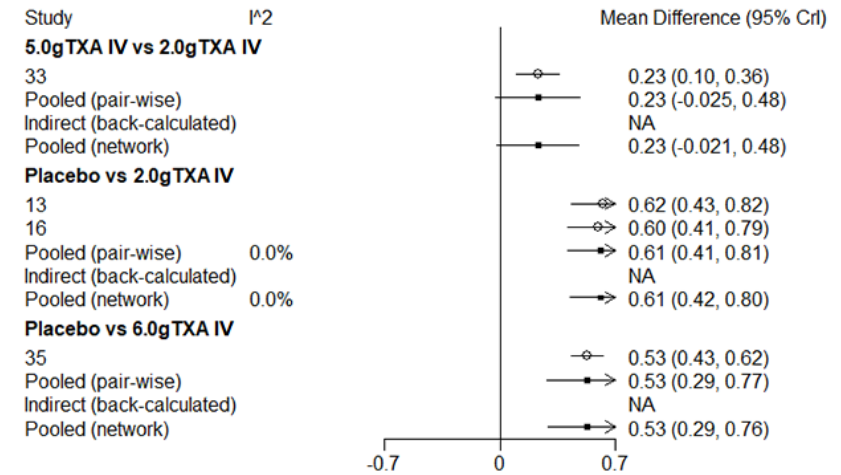
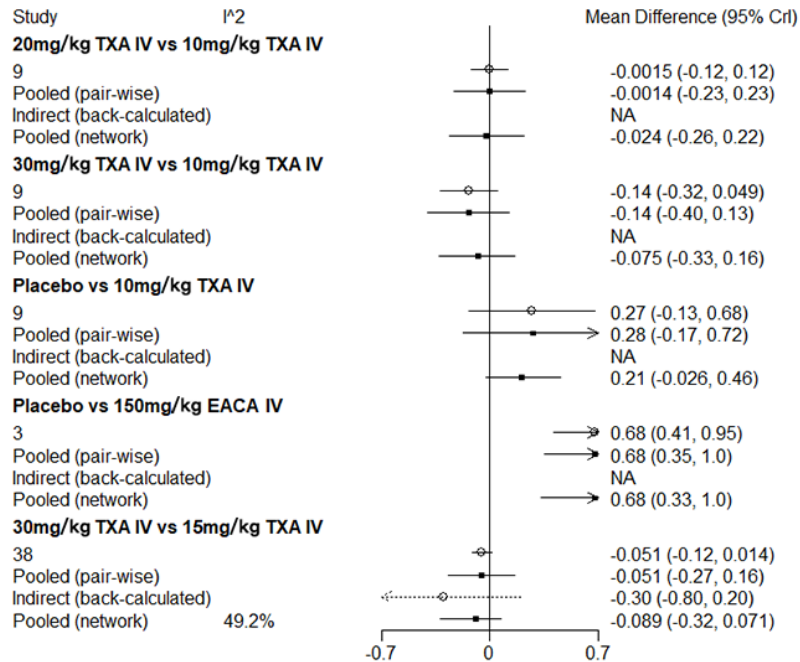
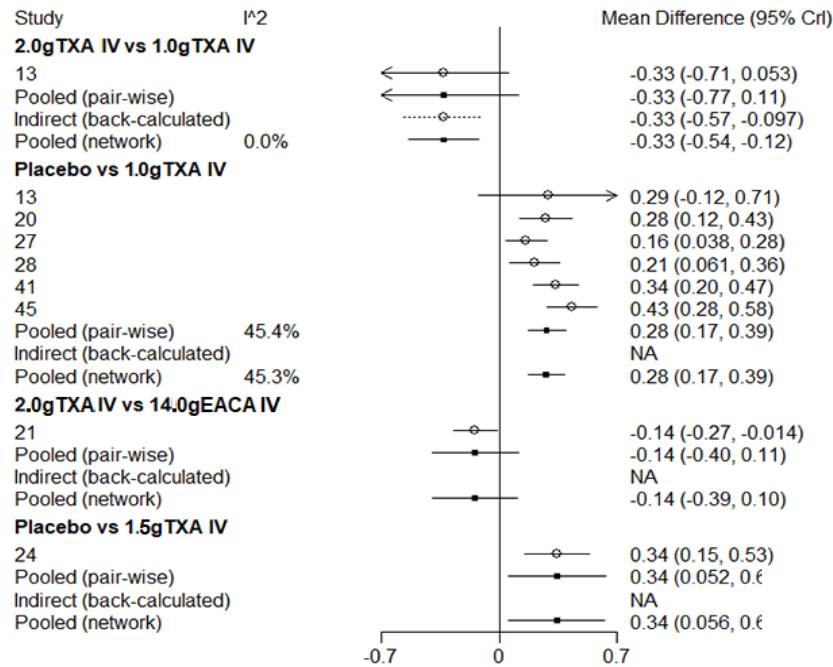
Supplementary Material 4 (B) d. Brooks-Gelman-Rubin plots of drainage volume after TKA in intra-articular and intravenous (g or mg/kg) administrations of TXA and EACA.



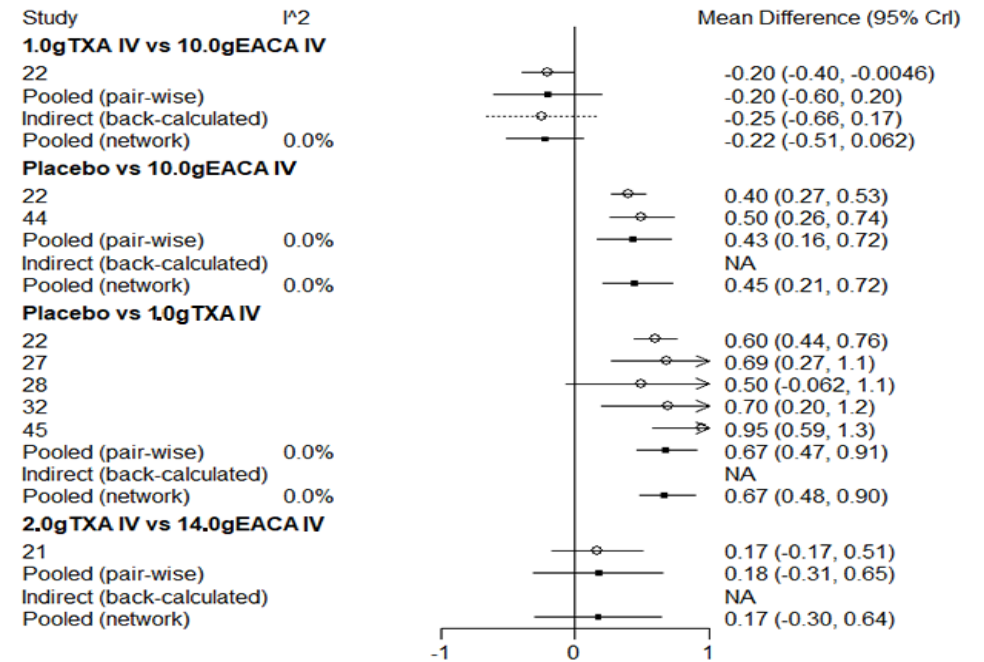
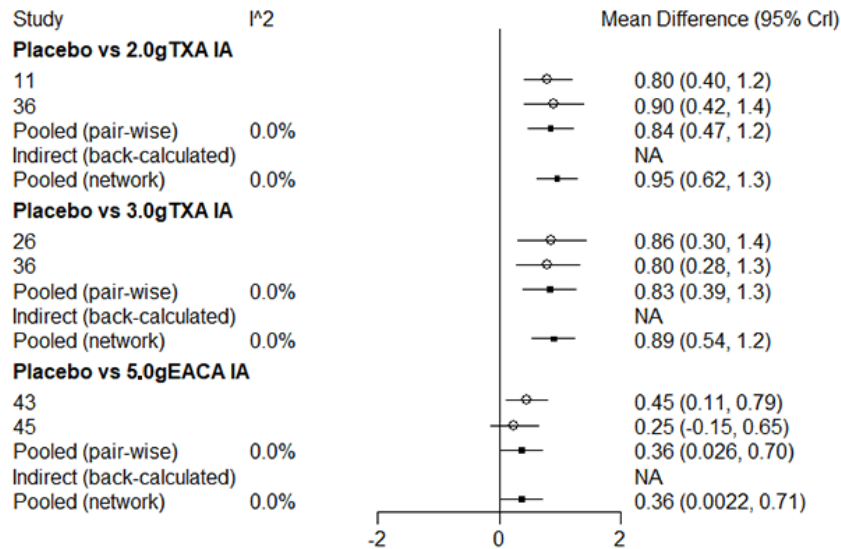
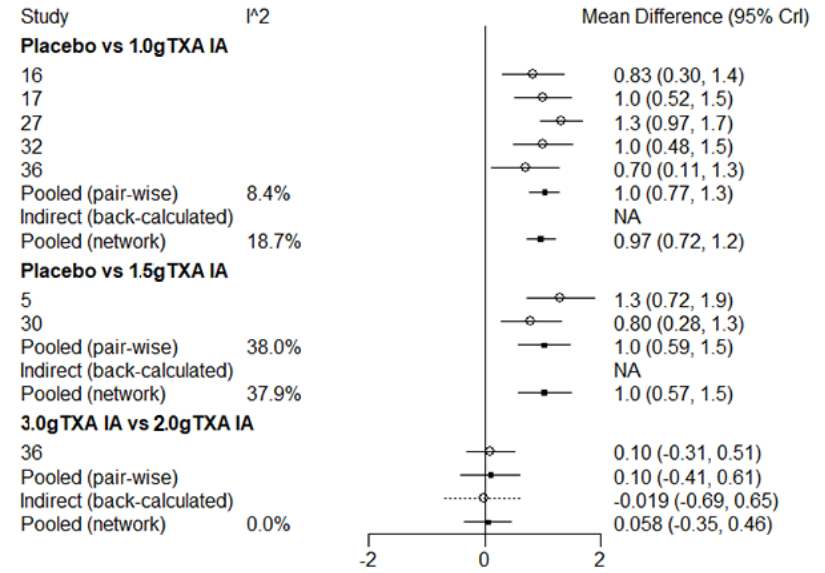
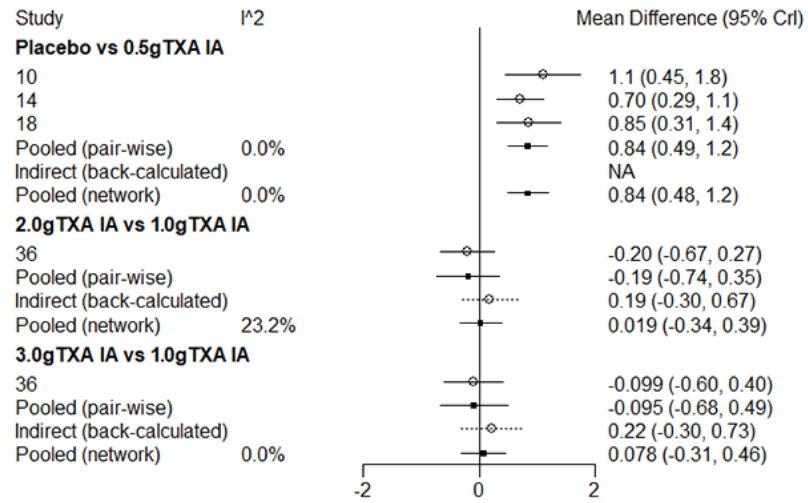
Supplementary Material 4 (B) e. Brooks-Gelman-Rubin plots of PE/DVT rates after TKA in intra-articular and intravenous (g or mg/kg) administrations of TXA and EACA

Supplementary Material 4 (C) a. Heterogeneity for total blood loss after TKA in intra-articular and intravenous (g or mg/kg) administrations of TXA and EACA.





Supplementary Material 4 (C) b. Heterogeneity for HB drop after TKA in intra-articular and intravenous (g or mg/kg) administrations of TXA and EACA.

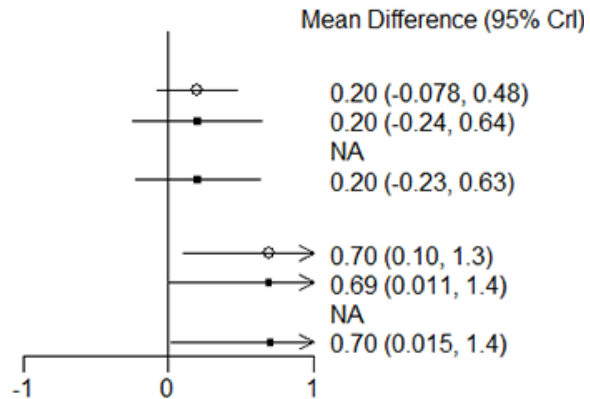


Study I²
5.0gEACA IV vs 2.0gTXA IV

33
 Pooled (pair-wise)
 Indirect (back-calculated)
 Pooled (network)

Placebo vs 2.0gTXA IV

16
 Pooled (pair-wise)
 Indirect (back-calculated)
 Pooled (network)



Study I²
20mg/kg TXA IV vs 150mg/kg EACA IV

3
 Pooled (pair-wise)
 Indirect (back-calculated)
 Pooled (network)

Placebo vs 150mg/kg EACA IV

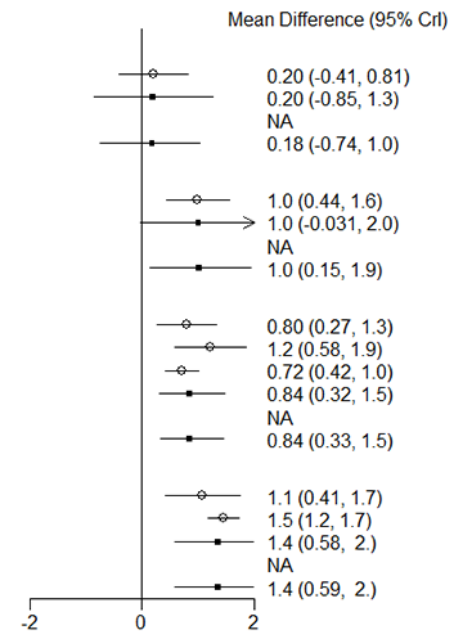
3
 Pooled (pair-wise)
 Indirect (back-calculated)
 Pooled (network)

Placebo vs 20mg/kg TXA IV

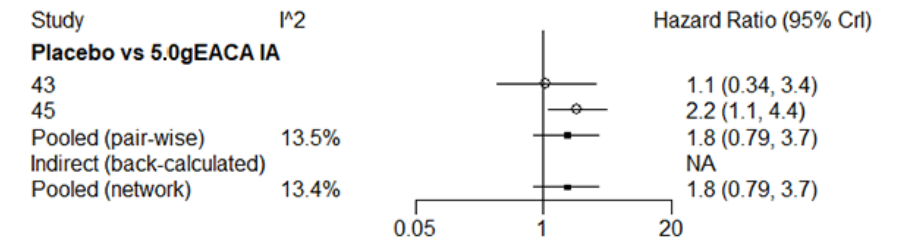
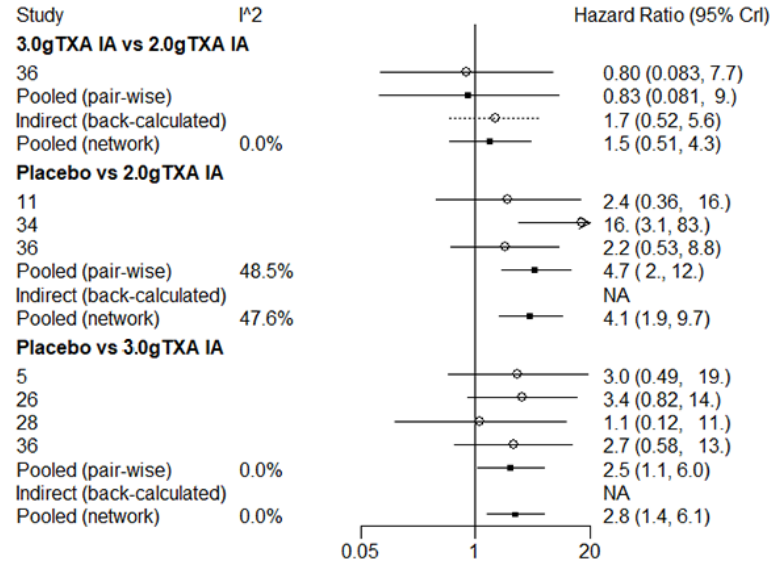
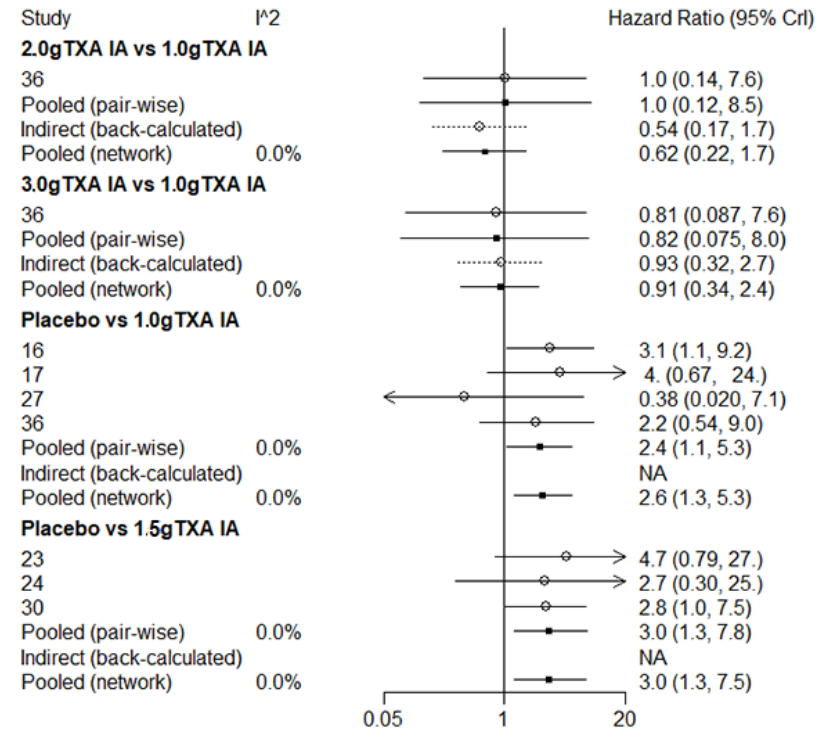
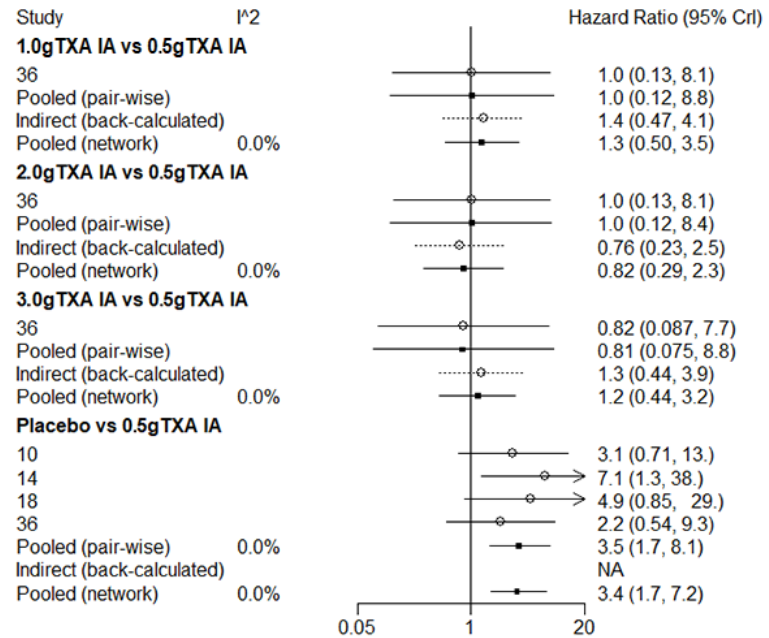
3
 26
 35
 Pooled (pair-wise) 1.5%
 Indirect (back-calculated)
 Pooled (network) 1.0%

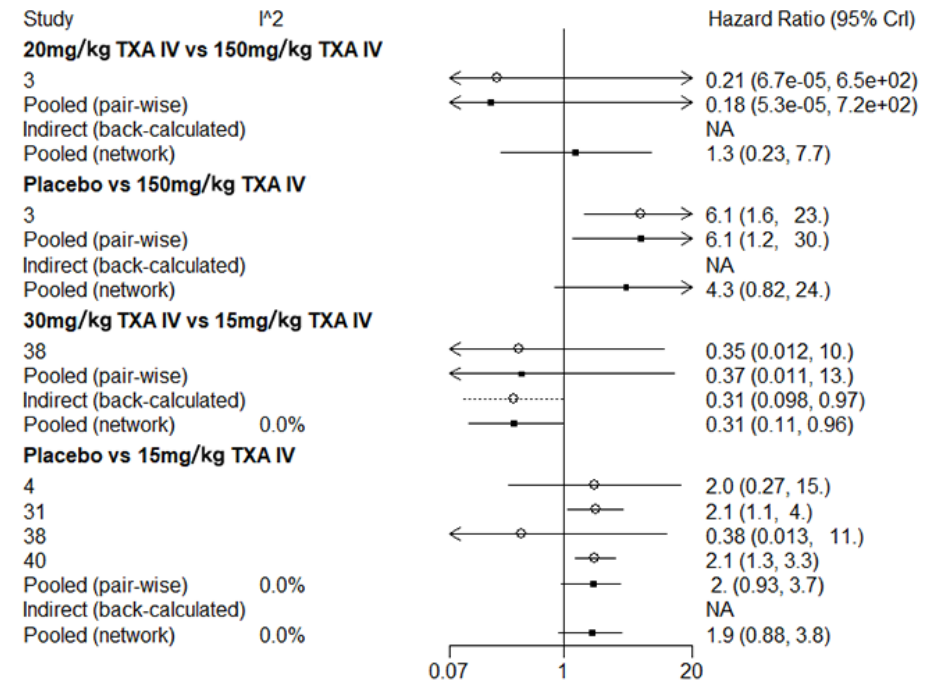
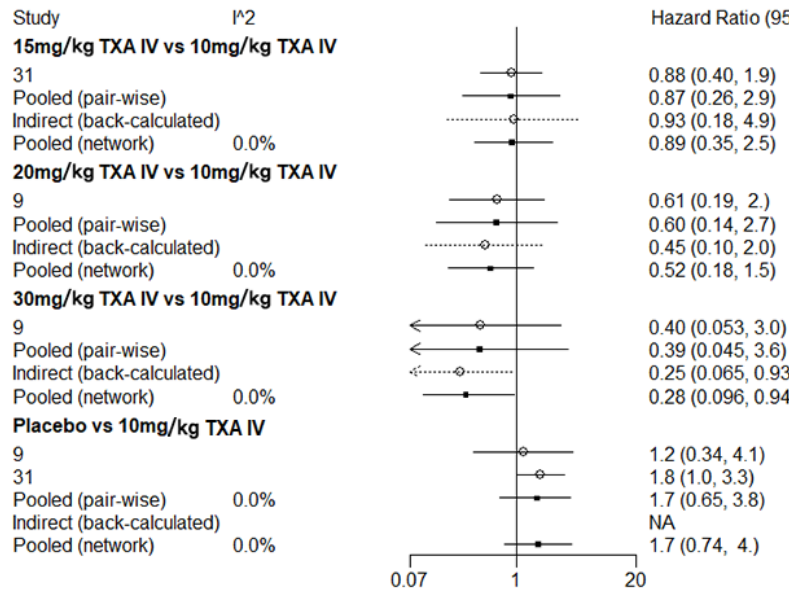
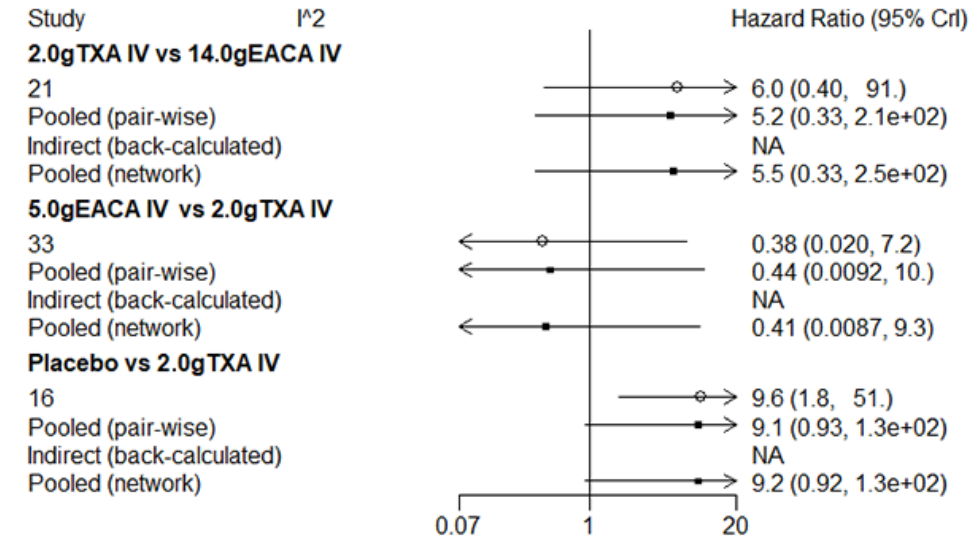
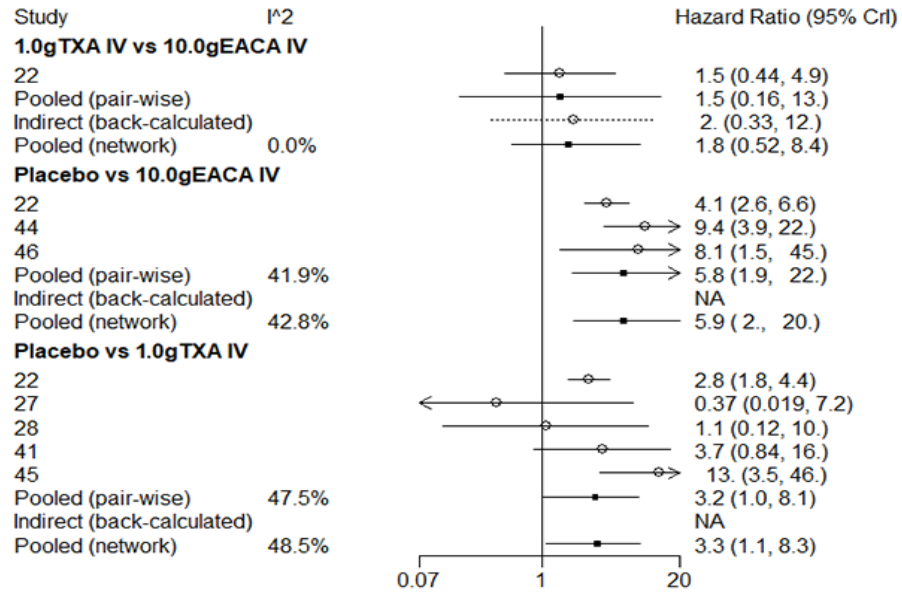
Placebo vs 30mg/kg TXA IV

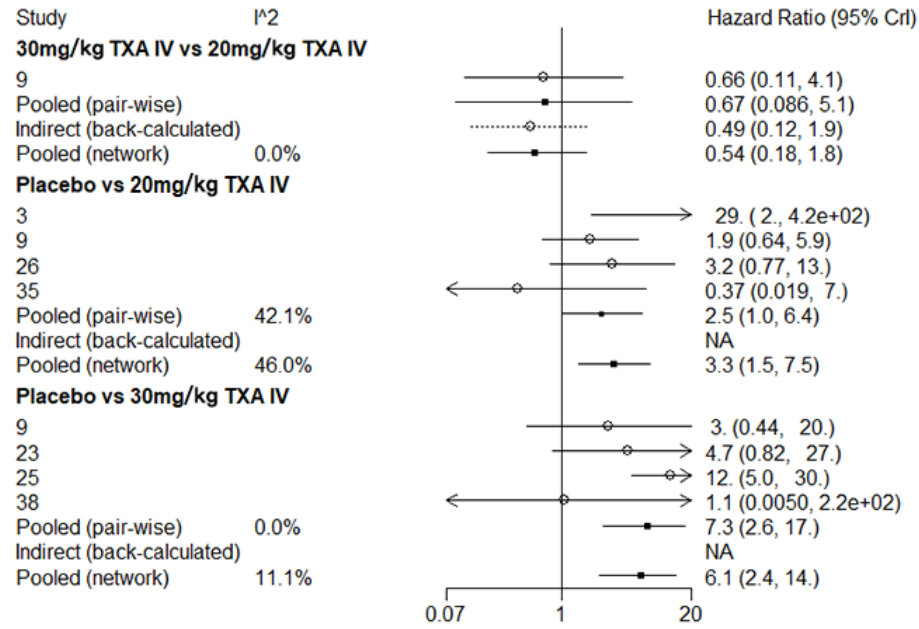
23
 25
 Pooled (pair-wise) 9.0%
 Indirect (back-calculated)
 Pooled (network) 9.5%



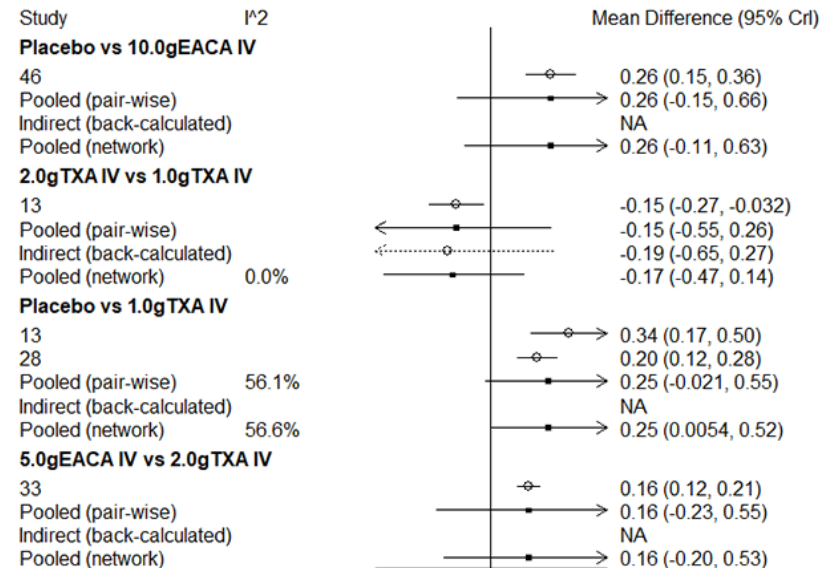
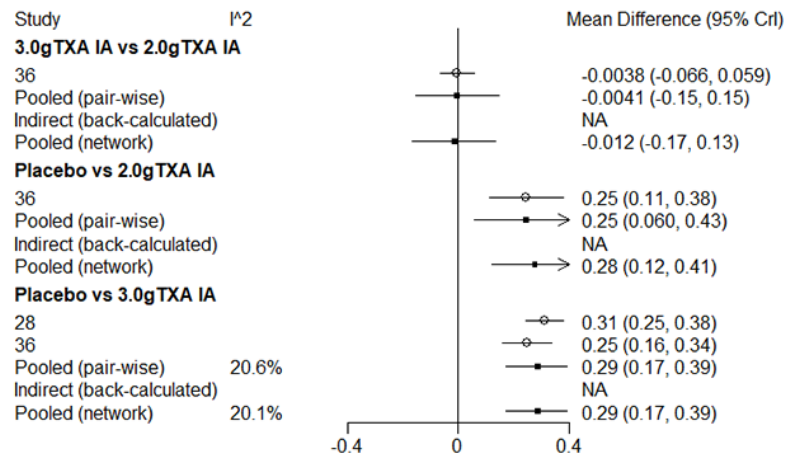
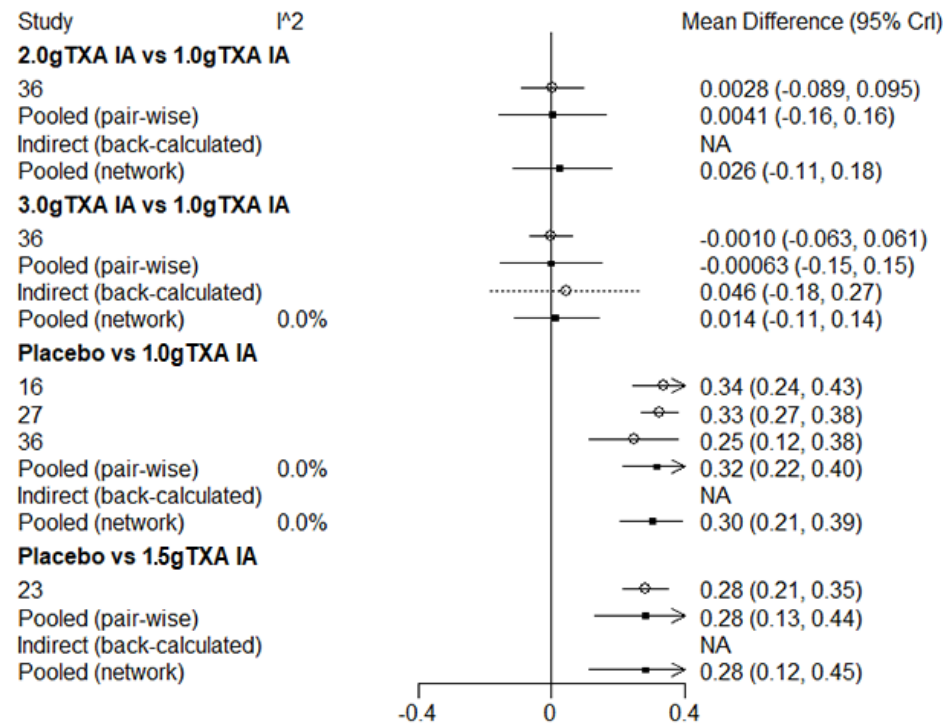
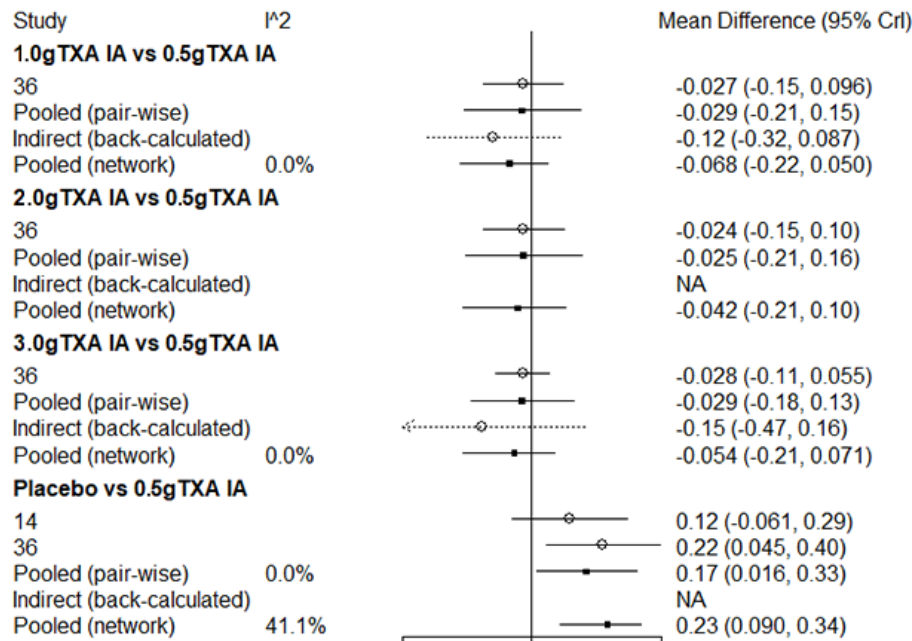
Supplementary Material 4 (C) c. Heterogeneity for transfusion rates after TKA in intra-articular and intravenous (g or mg/kg) administrations of TXA and EACA

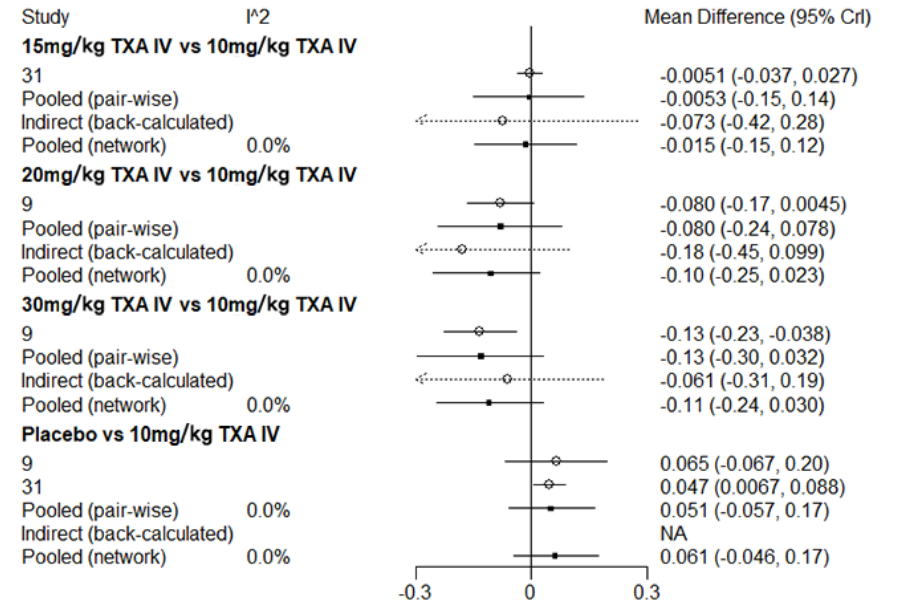
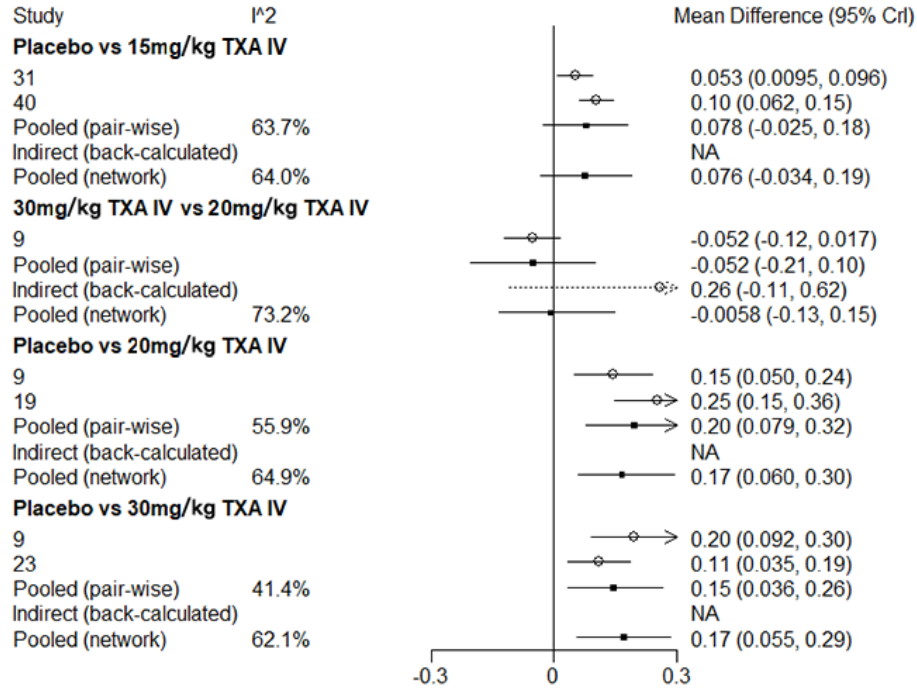
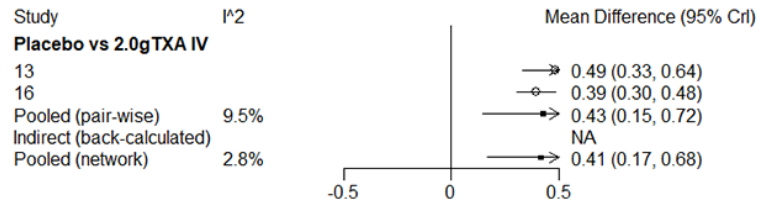




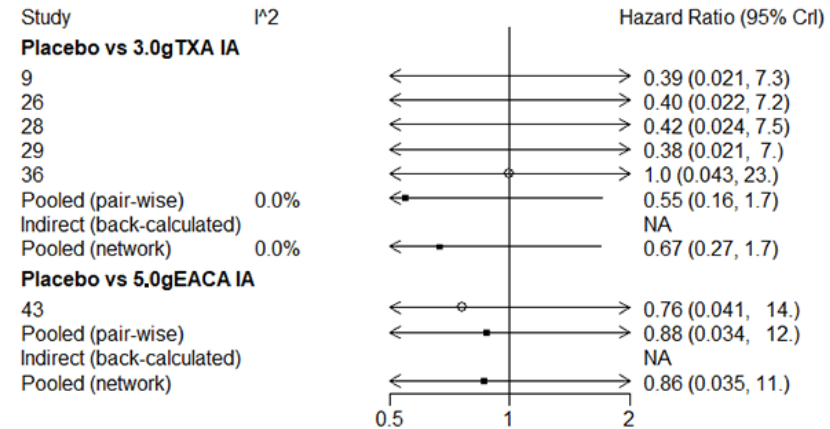
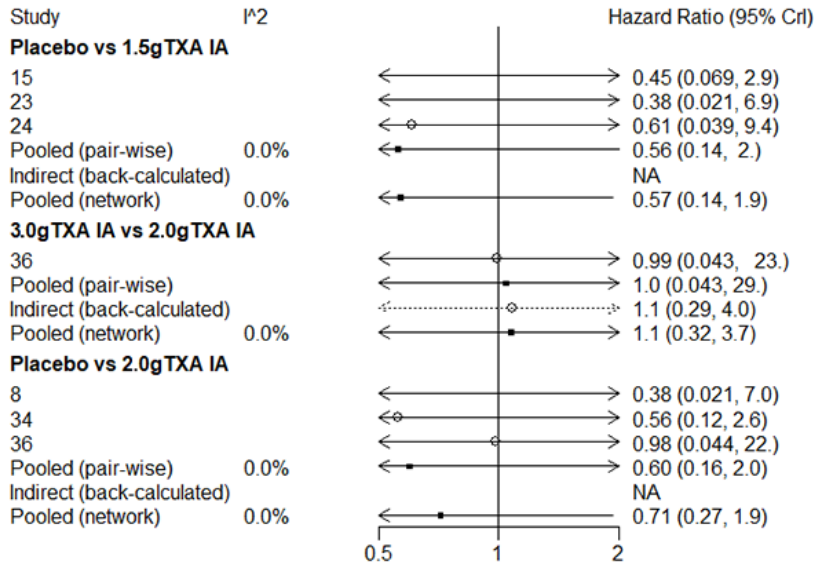
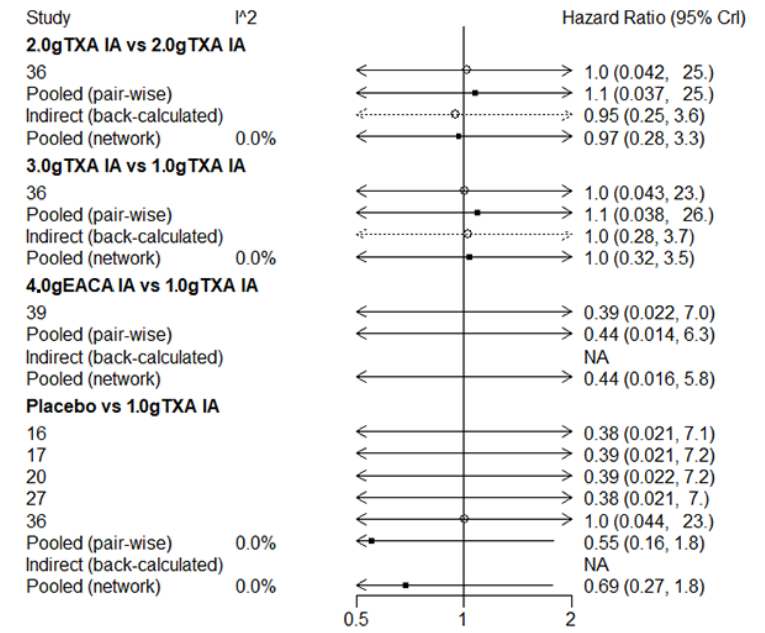
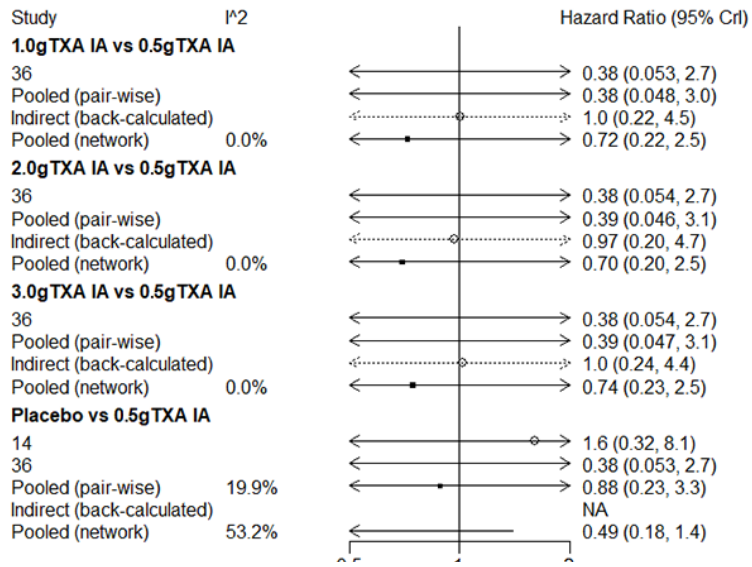


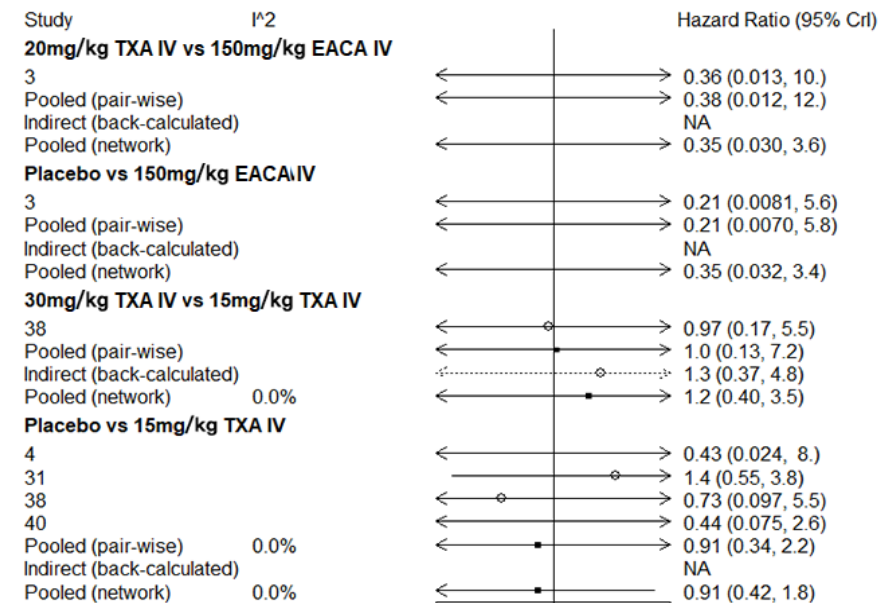
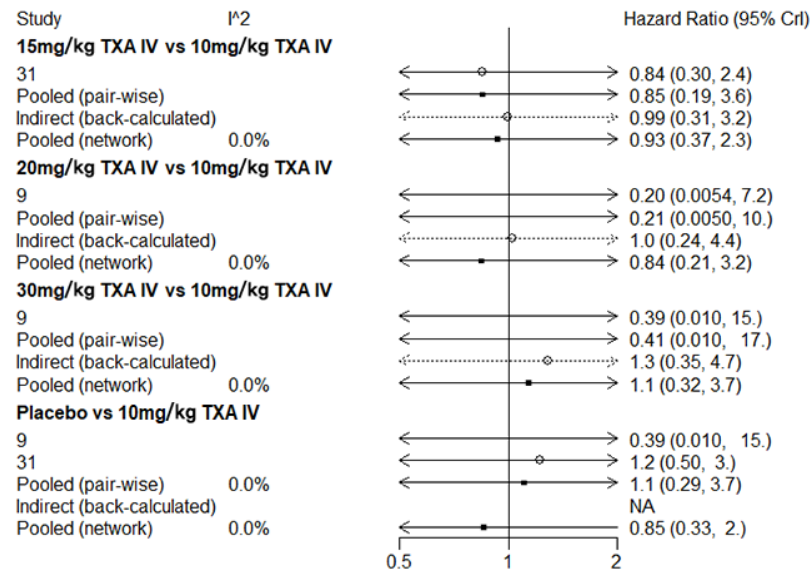
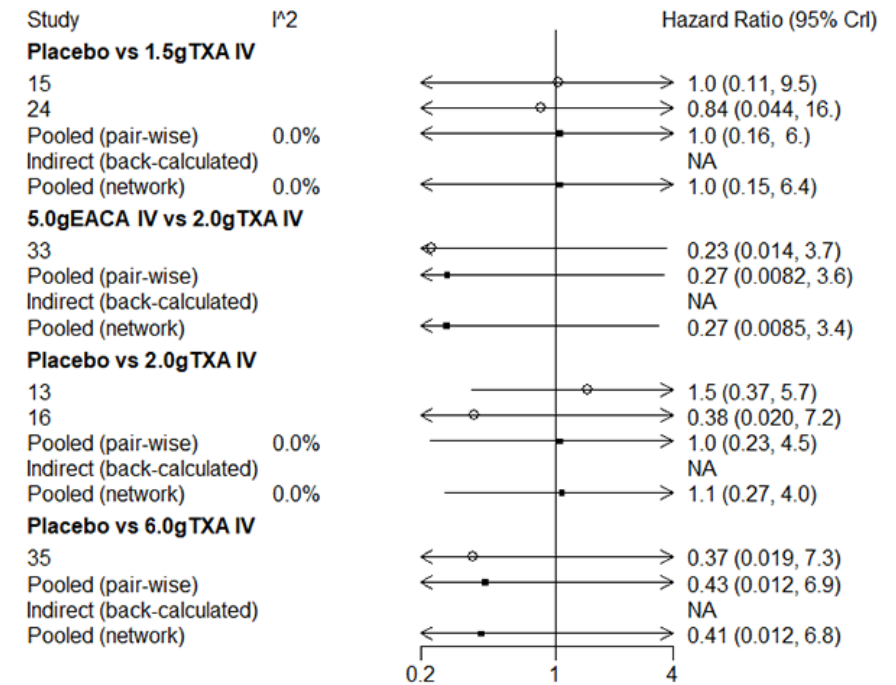
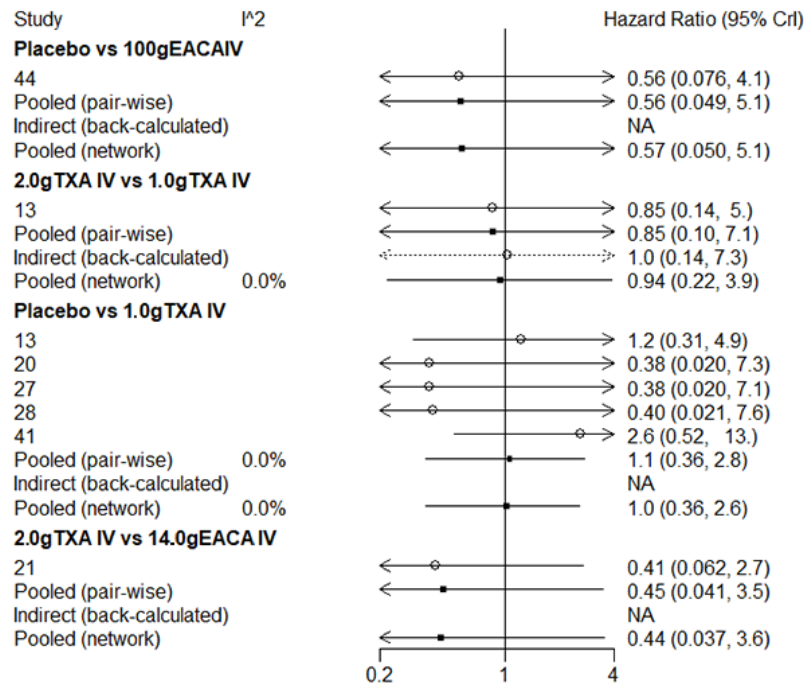
Supplementary Material 4 (C) d. Heterogeneity for drainage volume after TKA in intra-articular and intravenous (g or mg/kg) administrations of TXA and EACA.

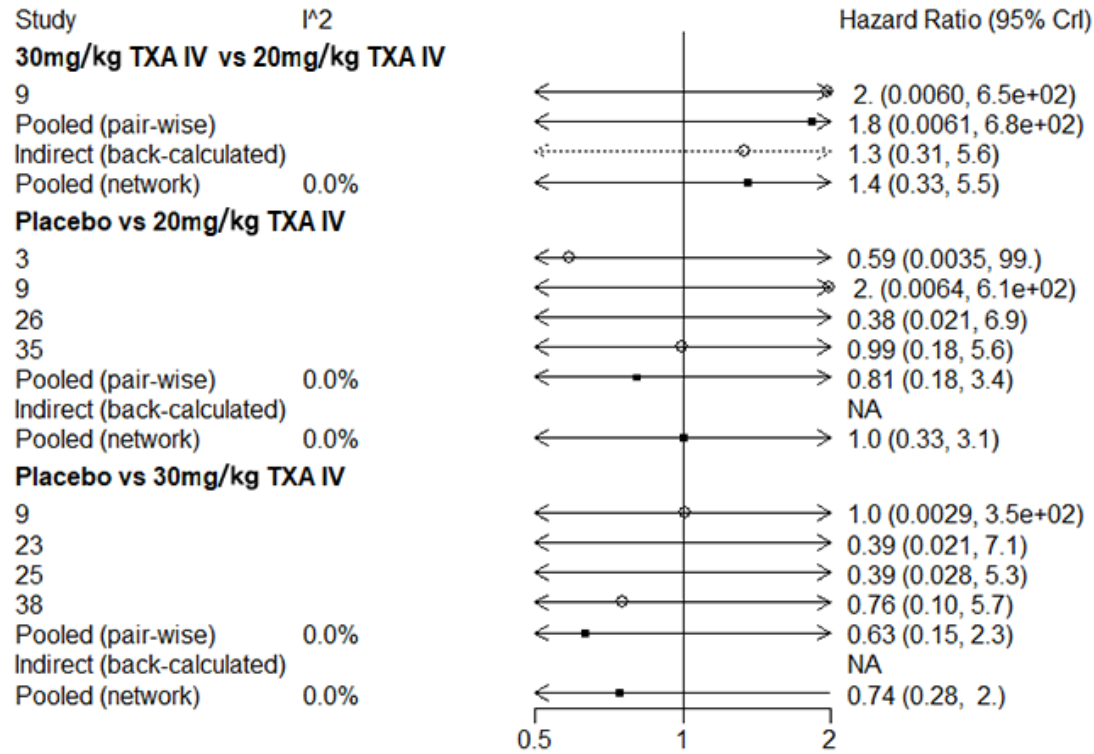


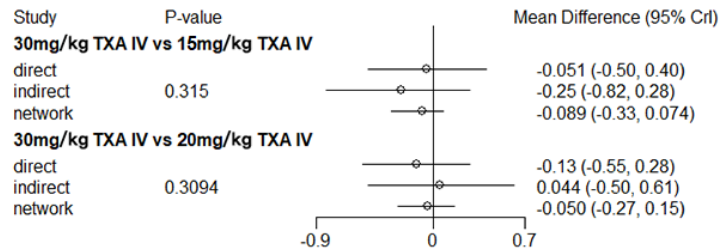
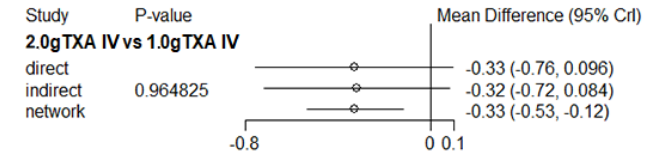
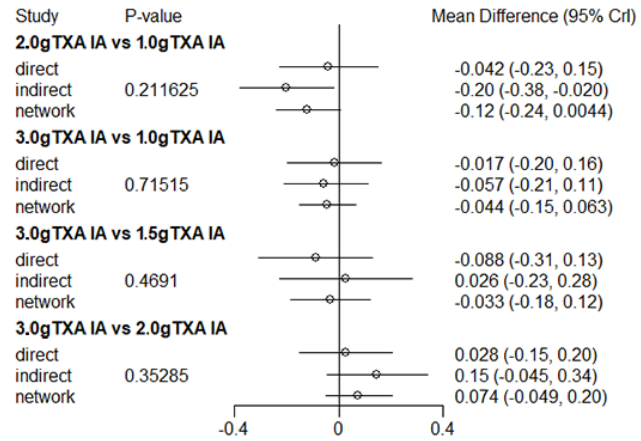


Supplementary Material 4 (C) e. Heterogeneity for PE/DVT rates after TKA in intra-articular and intravenous (g or mg/kg) administrations of TXA and EACA.

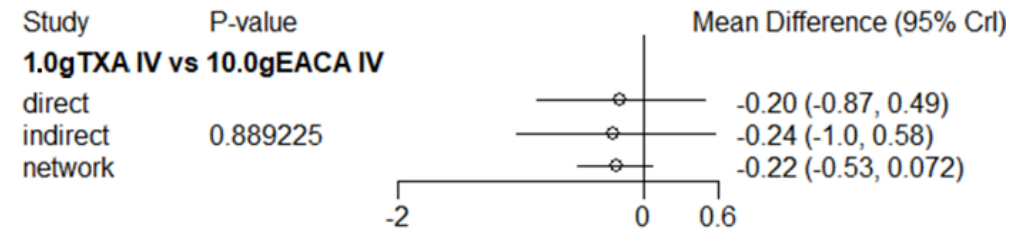
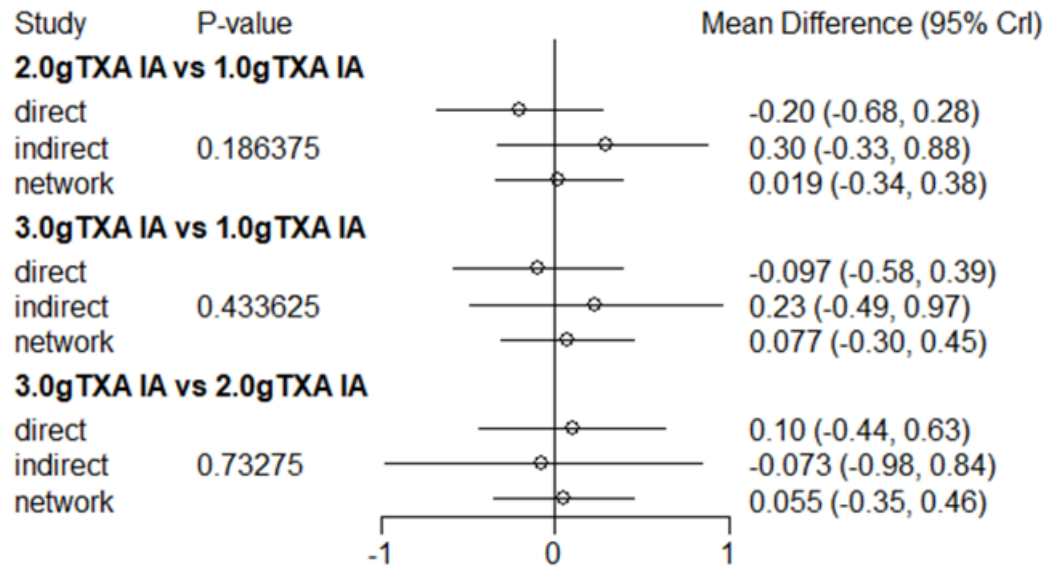




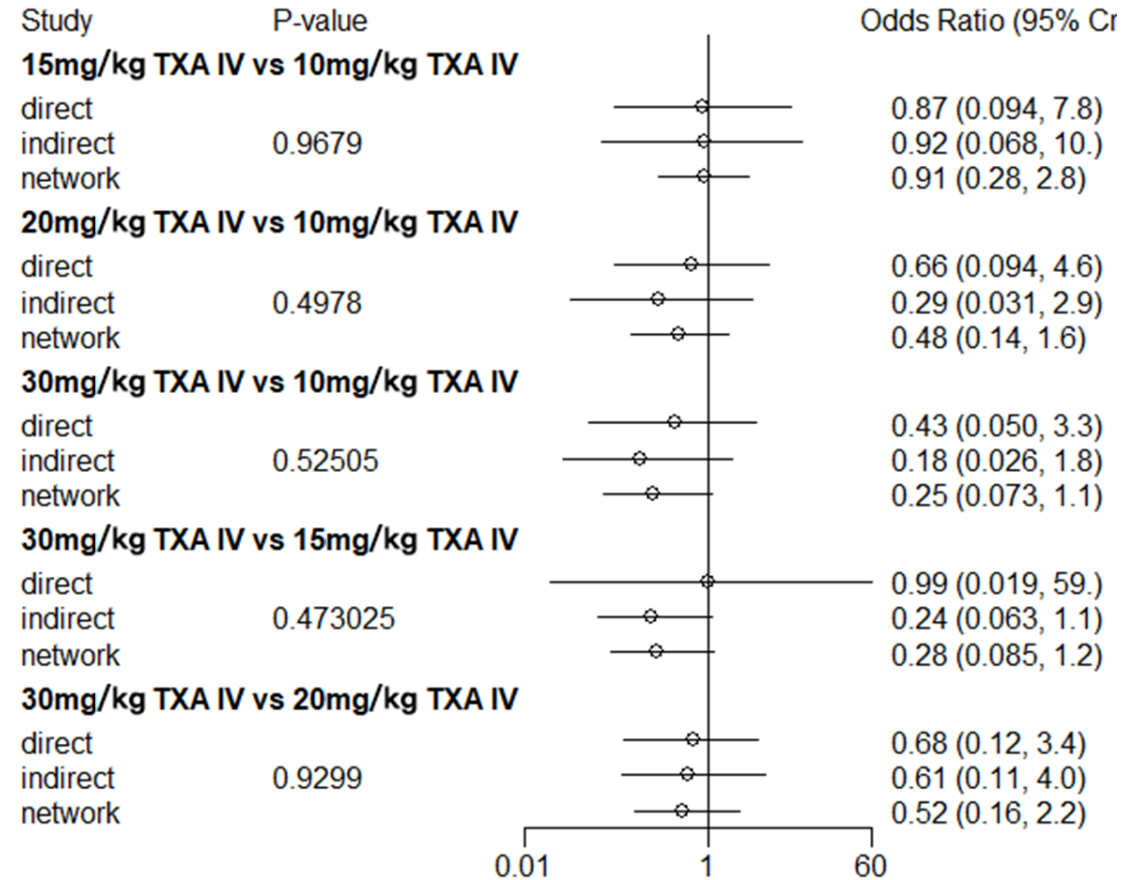
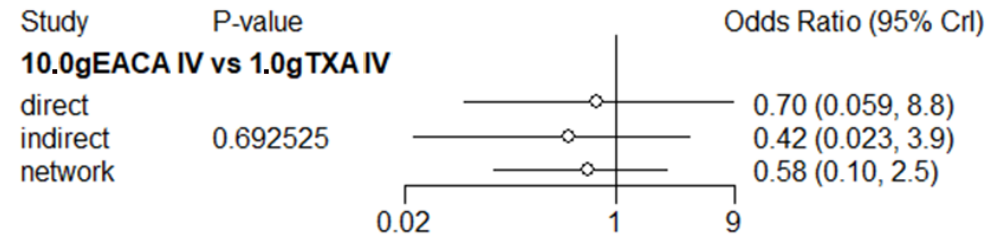
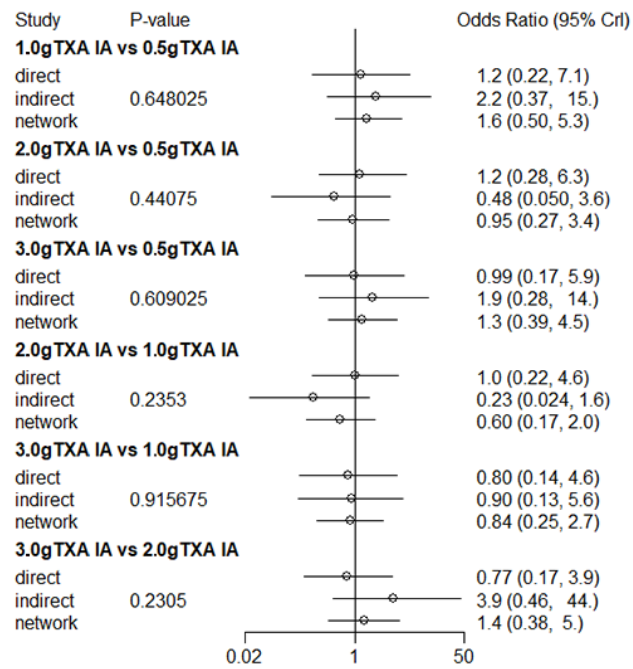




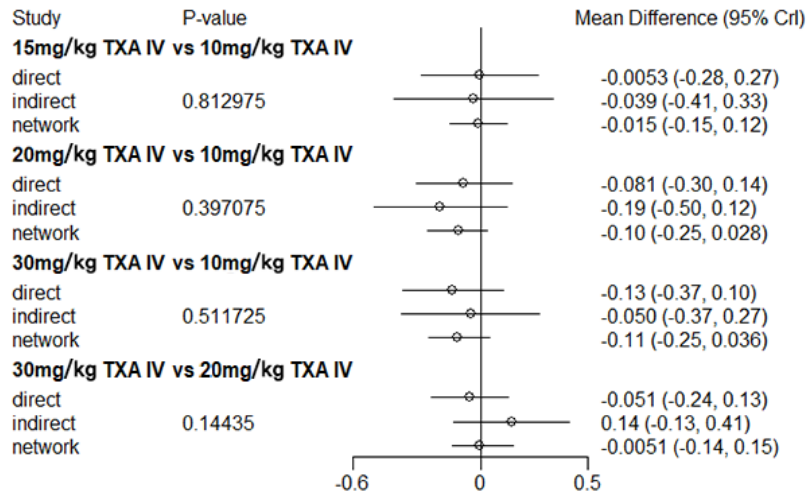
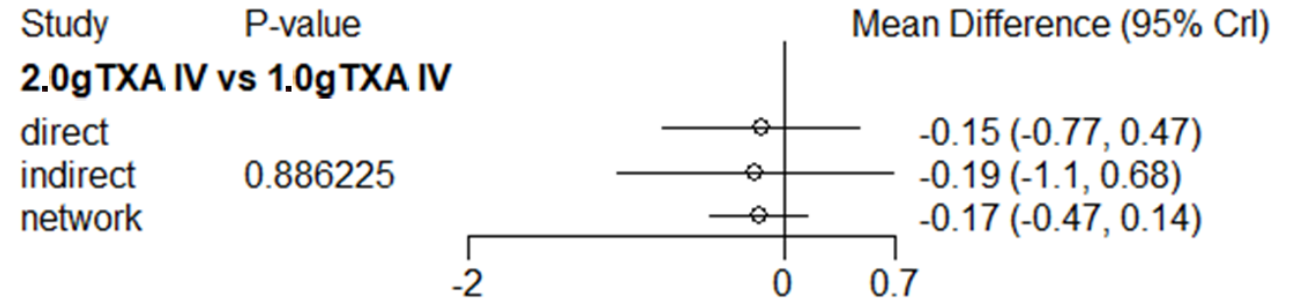
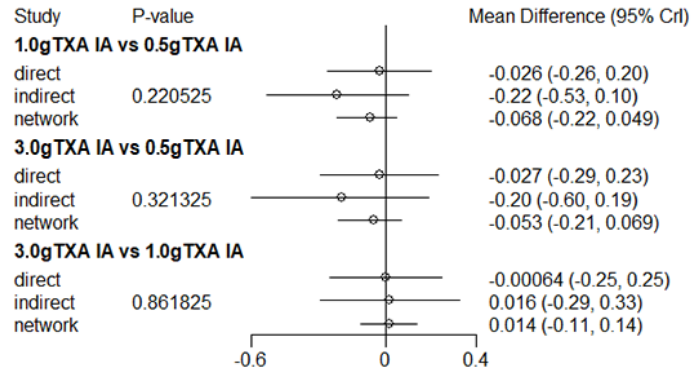
Supplementary Material 4 (D) a. Node-Splitting Method for total blood loss after TKA in intra-articular and intravenous (g or mg/kg) administrations of TXA and EACA.



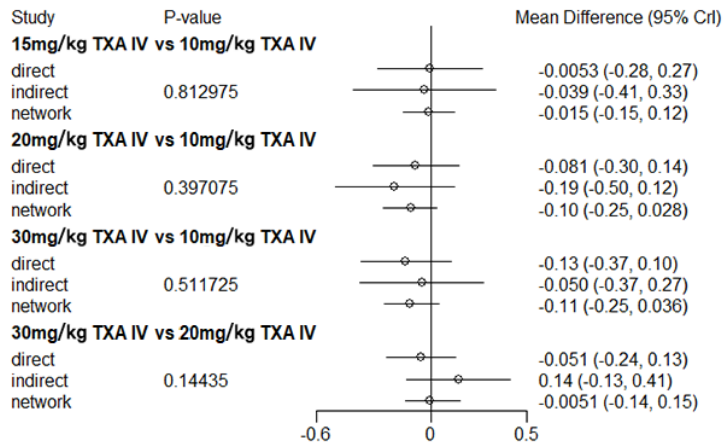
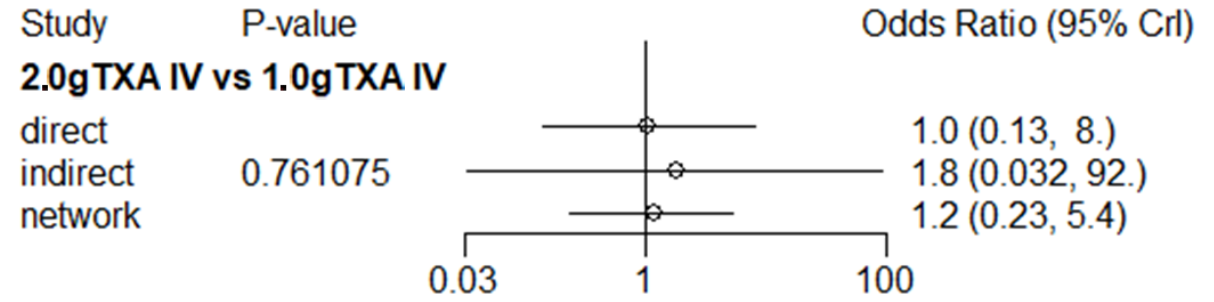
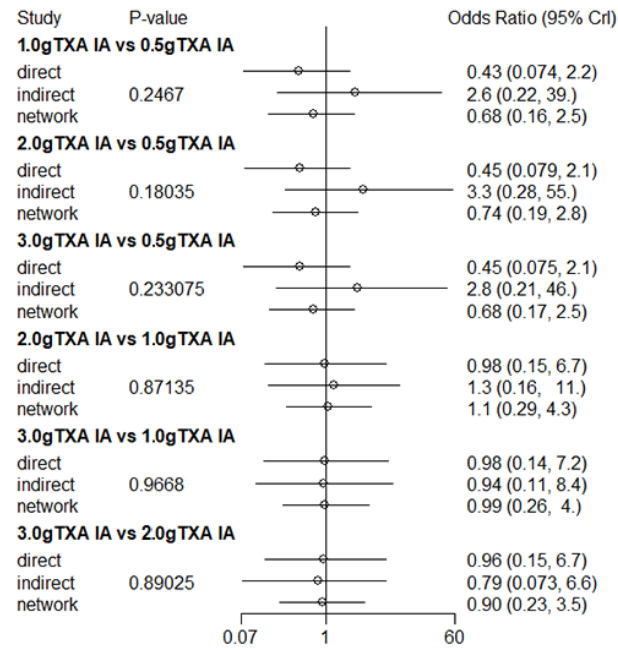
Supplementary Material 4 (D) b. Node-Splitting Method for HB drop after TKA in intra-articular and intravenous (g or mg/kg) administrations of TXA and EACA.



Supplementary Material 4 (D) c. Node-Splitting Method for transfusion rates after TKA in intra-articular and intravenous (g or mg/kg) administrations of TXA and EACA.



Supplementary Material 4 (D) d. Node-Splitting Method for drainage volume after TKA in intra-articular and intravenous (g or mg/kg) administrations of TXA and EACA.



Supplementary Material 4 (D) e. Node-Splitting Method for PE/DVT rates after TKA in intra-articular and intravenous (g or mg/kg) administrations of TXA and EACA.