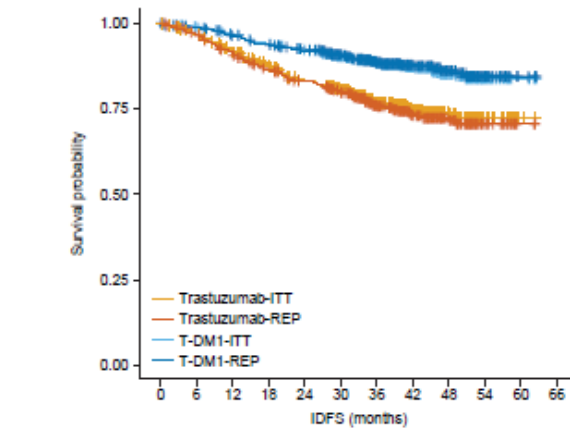


Supplementary Figure S4. Comparison of IDFS outcomes in the ITT population compared to the (A) RNA-evaluable population (REP) (including pre- and post-NAT surgical samples) and in patients with (B) pre-NAT REP samples (left) or post-NAT surgical REP samples (right). HER2, human epidermal growth factor receptor 2; IDFS, invasive disease-free survival; IHC, immunohistochemistry; ITT, intent-to-treat; NAT, neoadjuvant therapy; T-DM1, trastuzumab emtansine.

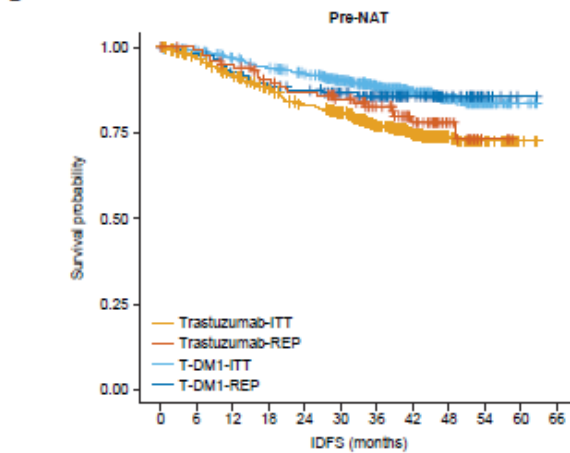
A



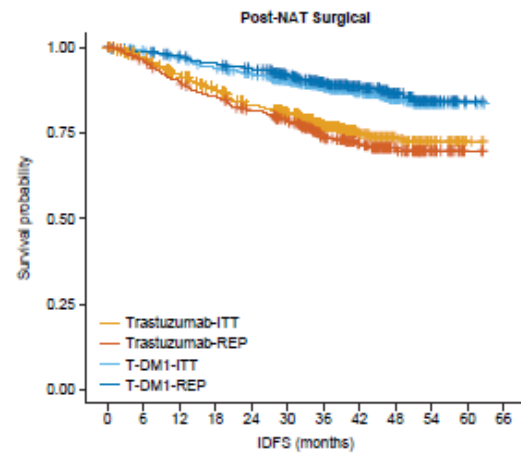
No. at risk	0	6	12	18	24	30	36	42	48	54	60	66
Trastuzumab-ITT	743	676	635	594	555	501	342	220	119	38	4	0
Trastuzumab-REP	520	483	451	422	396	357	241	158	90	26	2	0
T-DM1-ITT	743	707	681	658	633	561	409	255	142	44	4	0
T-DM1-REP	539	519	500	484	466	411	304	192	111	32	3	0

Group	Total n	HR	95% CI	P-value
ITT	1486	0.50	0.39–0.64	<0.0001
REP	1059	0.45	0.33–0.61	<0.0001

B



No. at risk	0	6	12	18	24	30	36	42	48	54	60	66
Trastuzumab-ITT	743	676	635	594	555	501	342	220	119	38	4	0
Trastuzumab-REP	122	116	109	99	94	85	63	43	19	3	0	0
T-DM1-ITT	743	707	681	658	633	561	409	255	142	44	4	0
T-DM1-REP	122	120	111	105	100	87	65	42	23	7	1	0



No. at risk	0	6	12	18	24	30	36	42	48	54	60	66
Trastuzumab-ITT	743	676	635	594	555	501	342	220	119	38	4	0
Trastuzumab-REP	398	367	342	323	302	272	178	115	71	23	2	0
T-DM1-ITT	743	707	681	658	633	561	409	255	142	44	4	0
T-DM1-REP	417	399	389	379	366	324	239	150	88	25	2	0

Group	Total n	HR	95% CI	P-value
ITT	1486	0.50	0.39–0.64	<0.0001
Pre-NAT REP	244	0.71	0.38–1.33	0.2849
Post-NAT Surgical REP	815	0.39	0.28–0.55	<0.0001