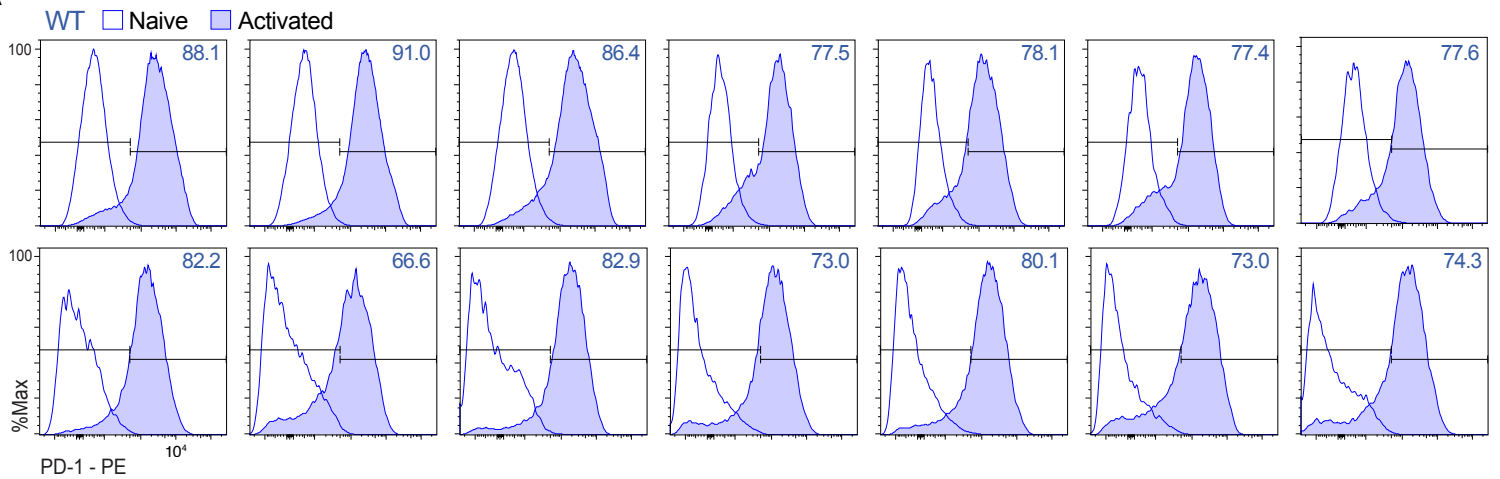
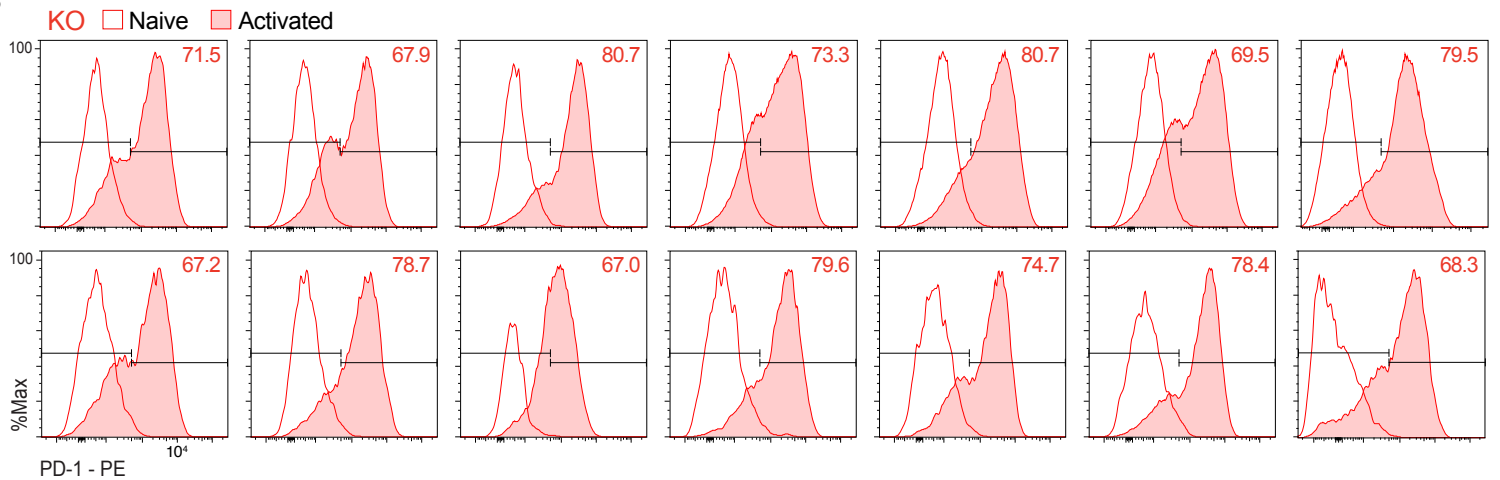


Supplemental Figure 2:

A



B



Supplemental Figure 2. PD-1 expression on WT and STAT3 KO CD8 T cells

Individual data used to compose Figure 5D. Mice were infected with clone 13 LCMV. 8d post infection, splenocytes were isolated and analyzed for PD-1 expression by flow cytometry. Histograms for naïve (CD62L⁺CD44⁻) and activated (CD62L⁻CD44⁺) CD8 T cells from WT (A) and STAT3 KO (B) mice are shown.