

Supplementary Materials

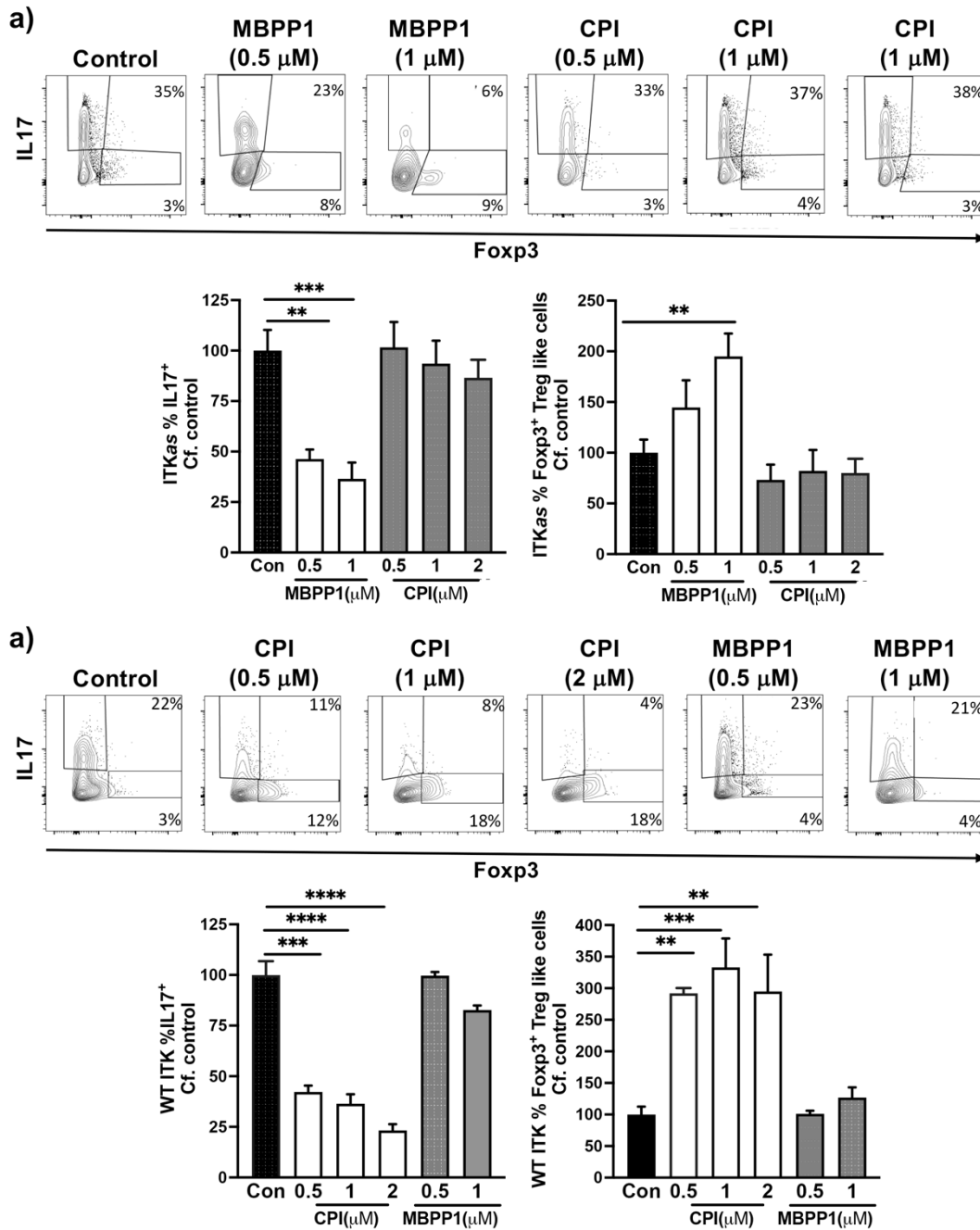


Fig. S1. The effects of MBPP1 and CPI-818 on Th17 cells is specific. (a) Naïve ITKas IL17A-GFP/Foxp3-RFP CD4⁺ T cells were activated under Th17 differentiation conditions (anti-CD3/28, IL6 and TGFβ) in presence of ITKas inhibitor 2MBPP1, CPI-818, or DMSO control as indicated, followed by flow cytometric analysis for percentage of GFP⁺/IL17⁺ cells and RFP⁺/Foxp3⁺ Treg-like cells. (b) Naïve WT IL17A-GFP/Foxp3-RFP CD4⁺ T cells were activated under Th17 differentiation conditions in presence of ITKas inhibitor 2MBPP1, CPI-818, or DMSO control as indicated, followed by flow cytometric analysis for percentage of GFP⁺/IL17⁺ cells and

RFP⁺/Foxp3⁺ Treg-like cells. Mean \pm SEM, Student's T test was performed for statistical significance where * $p \leq 0.05$, ** $p \leq 0.005$, 3 independent experiments.