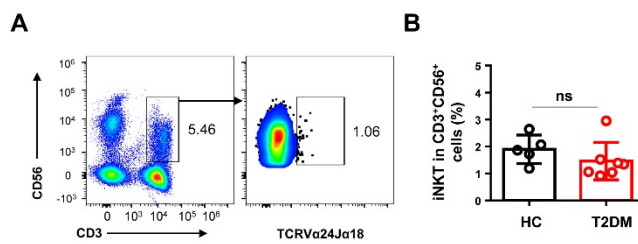
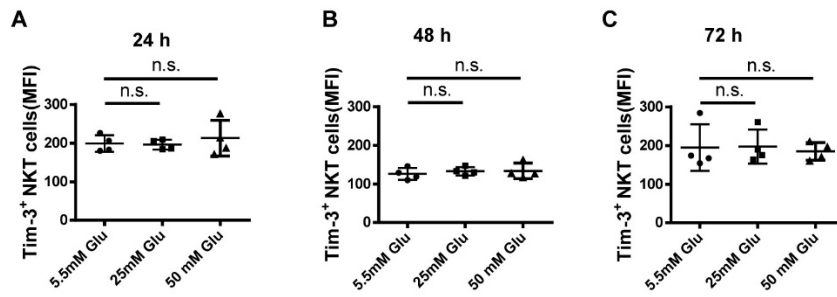


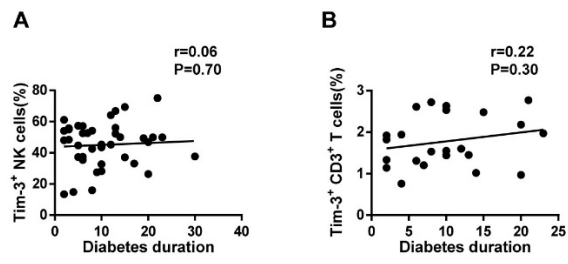
Supplementary Figures



Supplementary Figure S1. Comparison of iNKT frequency in T2DM patients and HC. **(A)** Strategy for gating iNKT cells from NKT-like cells via flow cytometry. **(B)** Frequency of iNKT cells from patients with T2DM and healthy controls (HC). Each dot represents a different individual and results are presented as the mean \pm SEM; n.s., not significant.



Supplementary Figure S2. High glucose treatment does not affect Tim-3 expression on NKT-like cells. PBMCs from healthy donors were cultured in RPMI-1640 medium containing 5.5 mM, 25 mM and 50 mM glucose. Expression of Tim-3 on NK cells after incubation 24h (A), 48h (B) and 72h (C). n.s., not significant.



Supplementary Figure S3. Correlation analysis of diabetes duration and Tim-3 expression on NK cells (**A**) and T cells (**B**) in T2DM patients.