

SUPPLEMENTAL MATERIAL

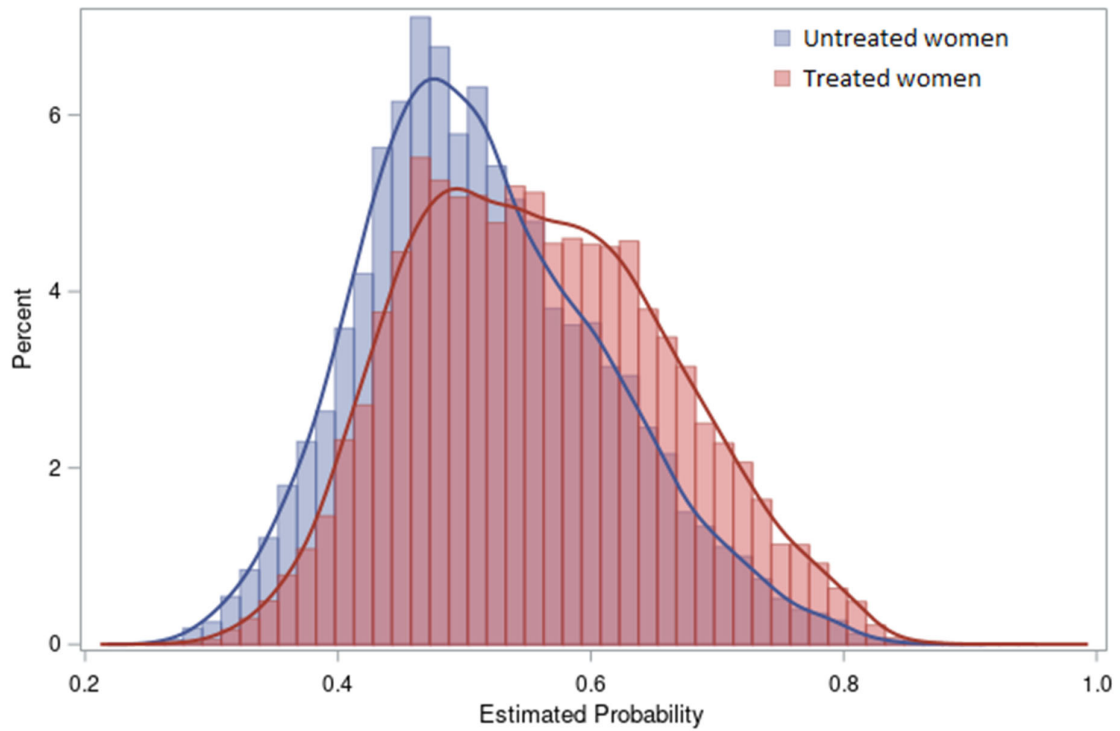
Table S1. Unadjusted and weighted Odds Ratios (ORs) of child and mother events in women with chronic hypertension, according the treatment of HT during pregnancy

	Treated vs untreated HT (OR)	
	n=42,329	
	Crude	Weighed on Inverse probability of Treatment*
	OR [95% confidence interval]	OR [95% confidence interval]
Infant events		
Fetal or neonatal death	1.12 [0.91-1.38]	1.13 [0.97-1.31]
Small for gestational age†	1.66 [1.56-1.77]	1.66 [1.59-1.74]
Preterm‡	1.41 [1.34-1.48]	1.33 [1.28-1.38]
Preterm (stages)		
Moderate preterm	1.40 [1.32-1.48]	1.32 [1.27-1.38]
Very preterm	1.53 [1.38-1.70]	1.41 [1.31-1.52]
Extremely preterm	1.13 [0.91-1.39]	1.09 [0.94-1.26]
Maternal events		
Preeclampsia	1.16 [1.11-1.23]	1.11 [1.07-1.15]
Cesarean section	1.69 [1.62-1.76]	1.32 [1.28-1.35]
Delivery or post-partum hemorrhage	0.97 [0.90-1.04]	0.93 [0.88-0.98]
Thromboembolic venous disease	0.90 [0.63-1.29]	0.80 [0.62-1.03]
Stroke or ACS	0.47 [0.26-0.87]	0.37 [0.24-0.58]
Death during post partum	1.93 [0.59-6.26]	1.41 [0.66-3.02]

*The probability of being treated was evaluated by a logistic regression model using the following variates: maternal age (years), deprivation, obesity, tobacco use, history of diabetes, gestational hypertension, history of thromboembolic disease, multiple pregnancy and year of childbirth. †Birth weight was available from 2013, low birth weight ORs are calculated for available data at the period 2013-2018. ‡Preterm ORs are calculated for live births.

Abbreviations: ACS = Acute coronary syndrome, HT = chronic hypertension before pregnancy, OR = Odds Ratio.

Figure S1. Propensity score distribution by treatment groups



The probability of being treated was evaluated by a logistic regression model using the following variates: maternal age (years), deprivation, obesity, tobacco use, history of diabetes, gestational hypertension, history of thromboembolic disease, multiple pregnancy and year of childbirth.