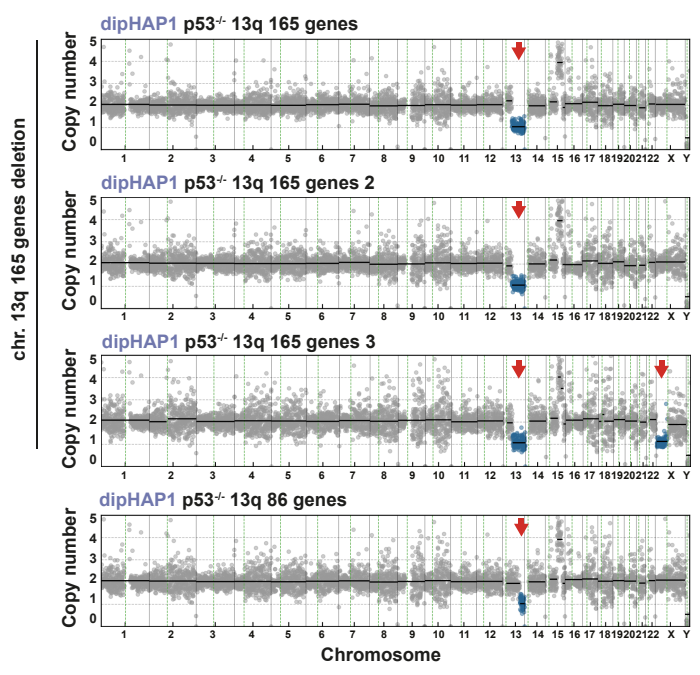
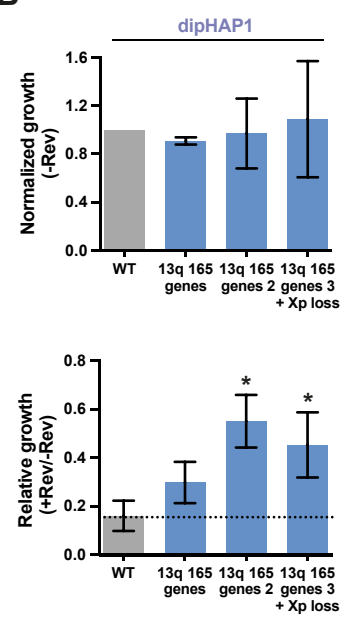


Figure S12

A

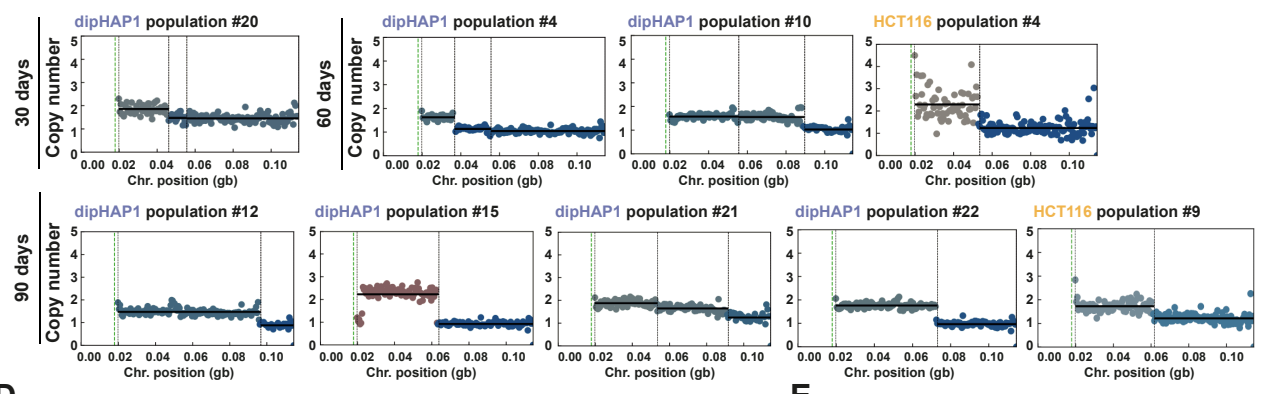


B

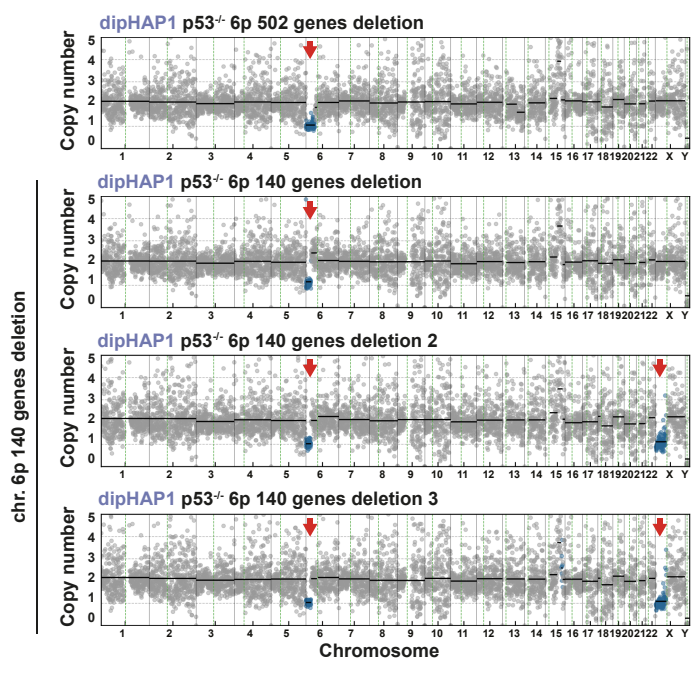


C

Chr. 13q focal loss in adapted populations



D



E

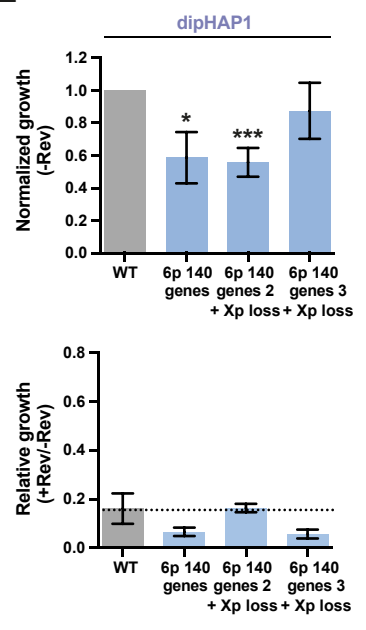


Figure S12. A, Copy number profiles of all engineered dipHAP1 chromosome 13q partial deletions. Cell line 13q 165 genes 3 also lost chromosome arm Xp. **B,** Normalized and relative growth of the additional 13q partial deletion cell lines (13q 165 genes 2 and 3). Bars depict mean +/- SD. Dotted line represents mean growth of dipHAP1 WT cell line in reversine. n = 3. **C,** Copy number profiles of 13q focal deletions that arose in adapted populations of the dipHAP1 and HCT116 cell lines after 30, 60 or 90 days of adaptation as indicated. **D,** Copy number profiles of all engineered dipHAP1 chromosome 6p partial deletions. Cell lines 6p 140 genes 2 and 3 also lost chromosome arm Xp. **E,** Normalized and relative growth of all 6p partial deletion cell lines. n = 3. p-values are from unpaired student's t-tests, * = p<0.05, *** = p<0.001. Where not indicated, the p-value was greater than 0.05.