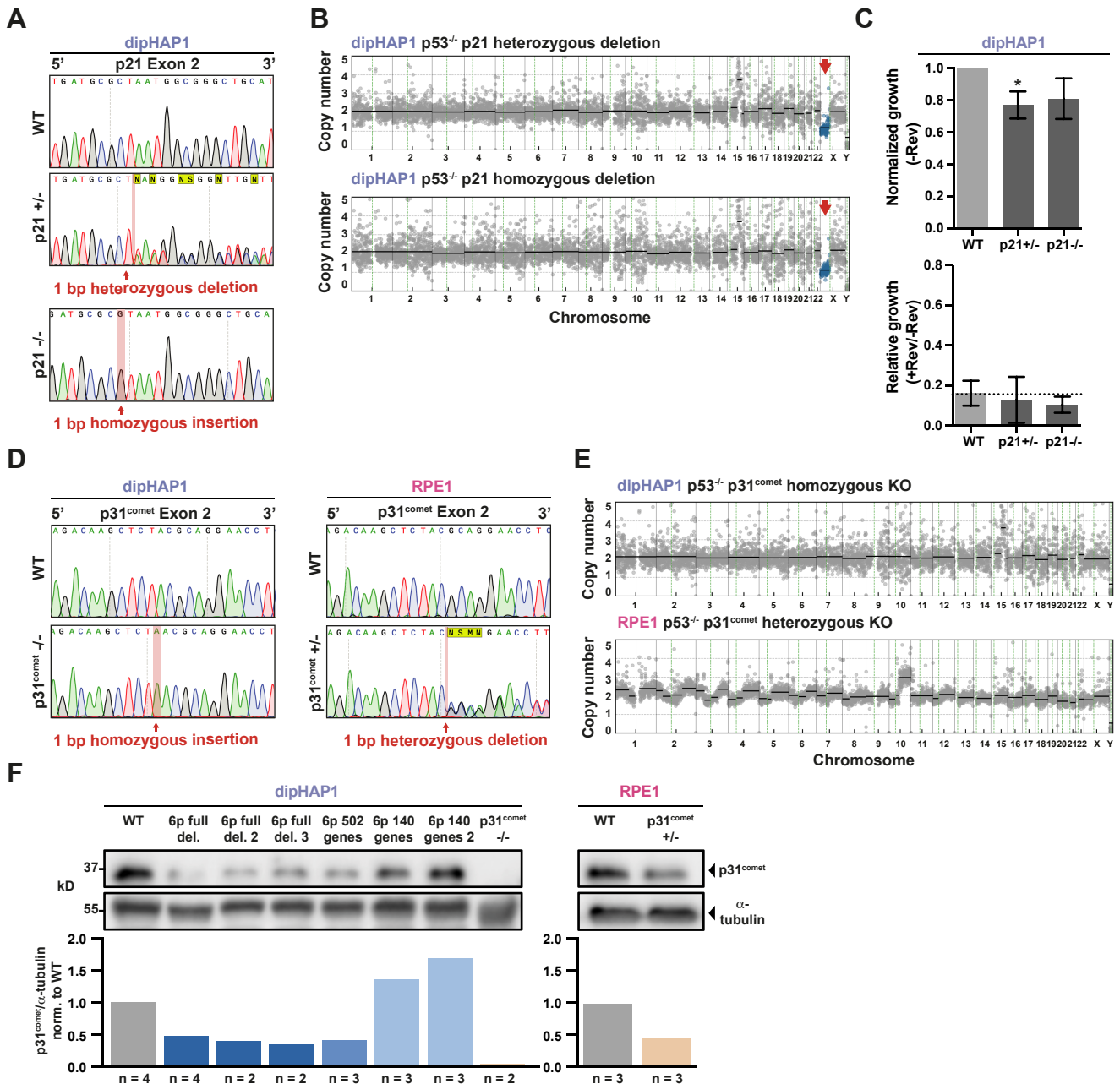


**Figure S14**



**Figure S14.** **A**, DNA sequencing chromatograms of the heterozygous and homozygous *p21* knockout in dipHAP1. **B**, Copy number profiles of the dipHAP1 *p21*<sup>+/-</sup> and *p21*<sup>-/-</sup> knockout cell lines with the additional loss of chr. Xp. **C**, Normalized and relative growth of the dipHAP1 *p21*<sup>+/-</sup> and *p21*<sup>-/-</sup> knockout cell lines. Bars depict mean +/- SD. Dotted line represents mean growth of dipHAP1 WT cell line with reversine. n = 2. p-values are from unpaired student t-tests, \* = p<0.05. Where not indicated, the p-value was greater than 0.05. **D**, DNA sequencing chromatograms of the heterozygous and homozygous *p31*<sup>comet</sup> knockout in dipHAP1 and RPE1. **E**, Copy number profiles of the heterozygous and homozygous *p31*<sup>comet</sup> knockout cell lines. **F**, Western blot of *p31*<sup>comet</sup> for all engineered chromosome 6p deletion and knockout cell lines. Alpha-tubulin was used as a loading control. Mean value of *p31*<sup>comet</sup> intensity relative to alpha-tubulin and normalized to WT is depicted in the bar graph; the respective n values are indicated below.