

Figure S2

■ copy number gain
■ copy number loss
■ copy number gain present before adaptation
■ copy number loss present before adaptation

30 days

60 days

90 days

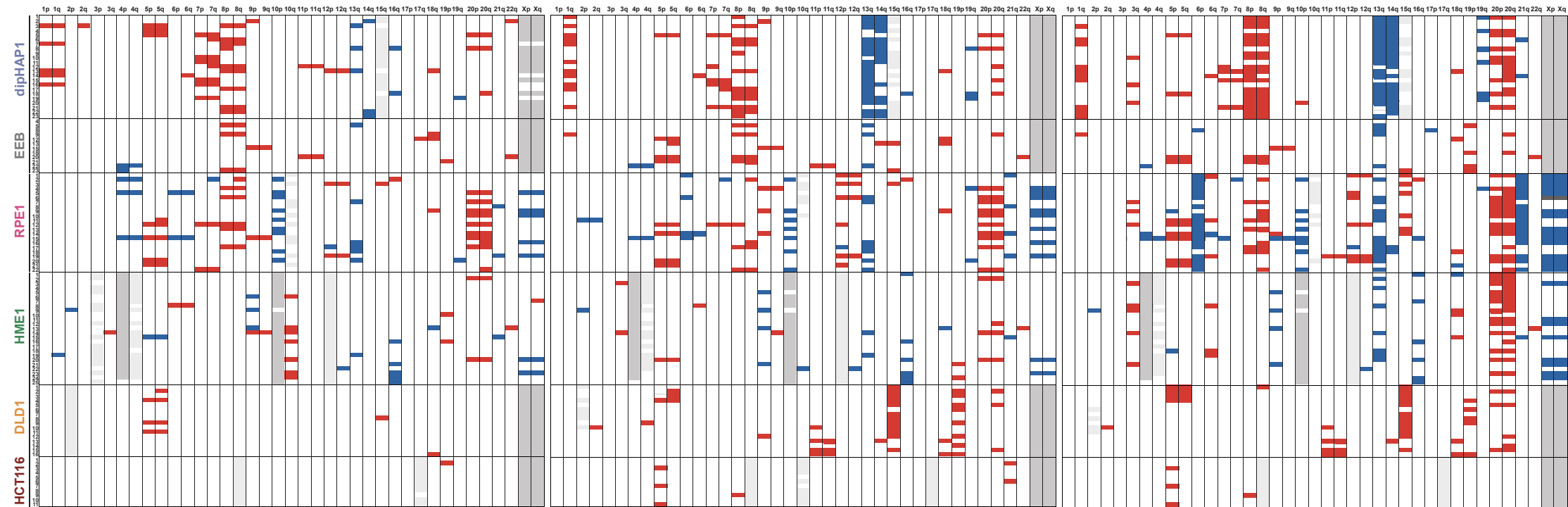


Figure S2. Copy number changes in chromosome arms for the individual adapted populations of each cell line at 30, 60 and 90 days. Cell line specific aneuploidies that were present prior to the adaptation are colored in grey.