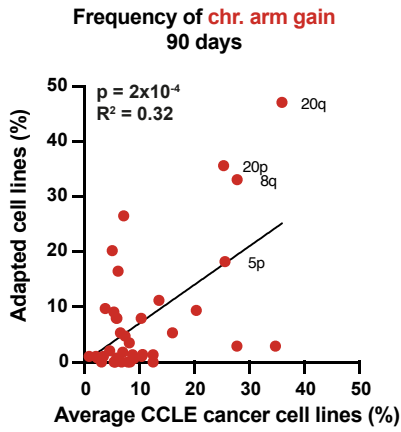


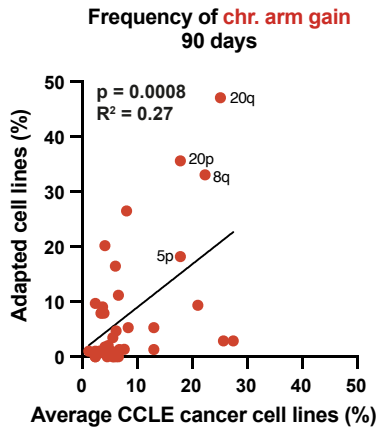
**Figure S6**

**A**

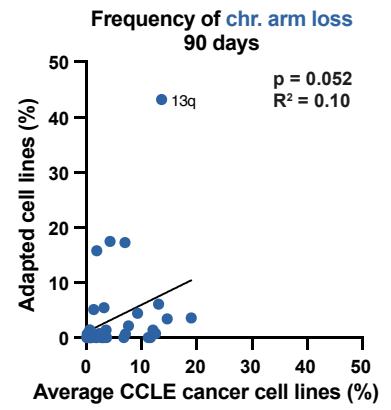
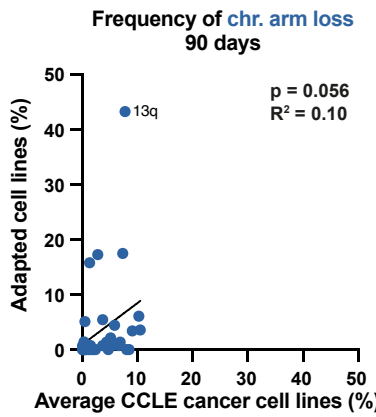
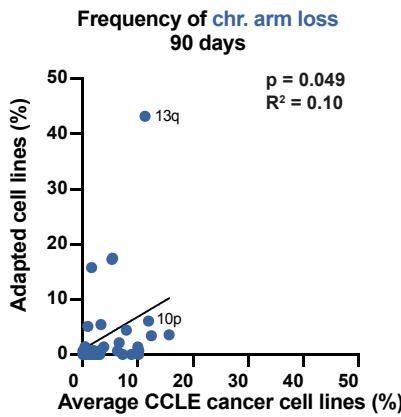
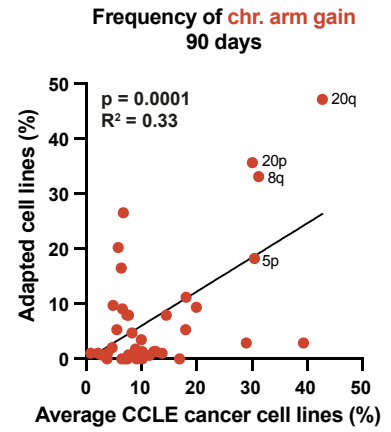
CCLE database **ALL**



**p53 WT**

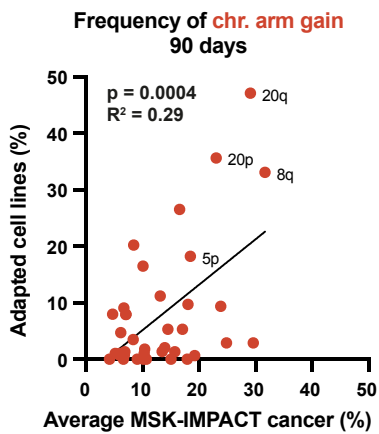


**p53 mutated**

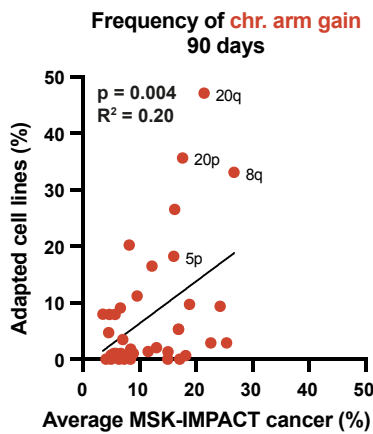


**B**

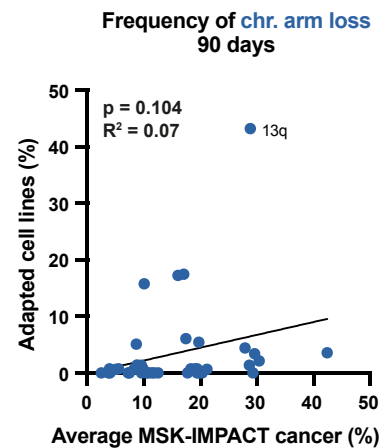
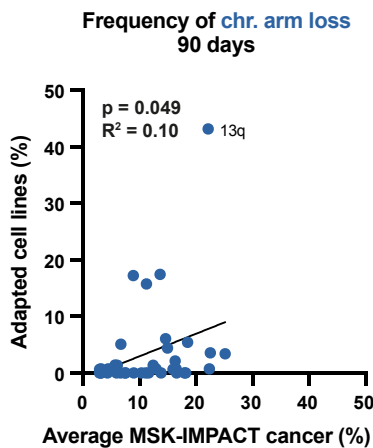
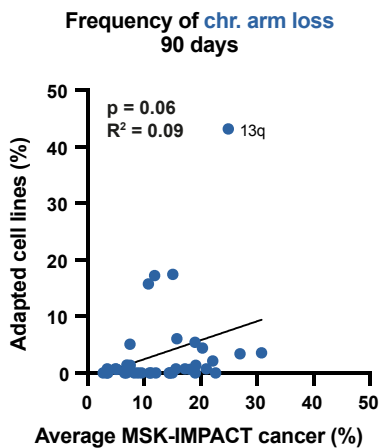
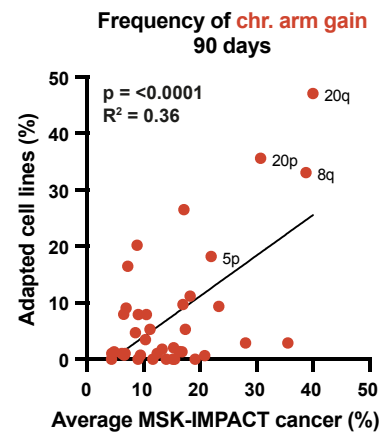
MSK-IMPACT **ALL**



**p53 WT**



**p53 mutated**



**Figure S6. A**, Correlation between the frequencies of chromosome arm gains (red dots) and losses (blue dots) in reversine adapted cell populations after 90 days of adaptation and the cancer cell line encyclopedia (CCLE) and **B**, the MSK-IMPACT cancer database. Correlations are depicted for all cancers and cell lines (left row) as well as for cancers and cell lines categorized with wild type p53 (middle row, p53 WT) or with mutated p53 (right row, p53 mutated). Statistical analyses are from simple linear regression.