

Figure S9

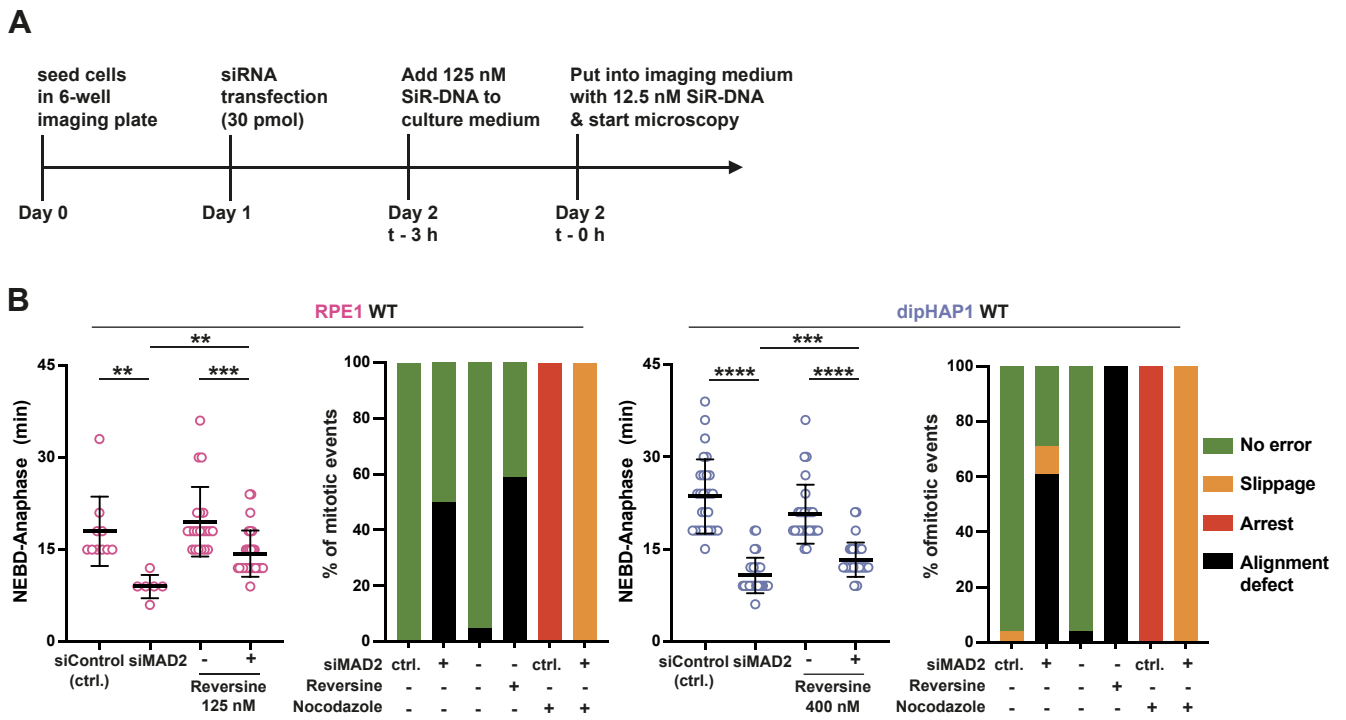


Figure S9. A, Experimental design of the siRNA experiment targeting MAD2 combined with the SiR-DNA live cell imaging set-up. **B**, Quantification of NEBD to anaphase durations and mitotic errors of RPE1 and dipHAP1 unadapted parental (WT) cell lines. Left: Time from NEBD to anaphase in min of WT cell lines transfected either with the indicated siRNA or with and without reversine. Right: Quantification of mitotic errors under the indicated conditions. Green = no error, orange = slippage, red = mitotic arrest, black = alignment defect. p-values are from unpaired student's t-tests, ** = $p < 0.01$, *** = $p < 0.001$, **** = $p < 0.0001$.