

SUPPLEMENTARY MATERIAL

SUPPLEMENTARY TABLES

Supplementary Table 1. Trial randomizations of the studied patient group with extended genetic profiling, those without genetic profiling and the overall transplant eligible group.

	Extended genetic profiling (n=556)	No extended genetic profiling (n=888)	Total transplant eligible (n=1444)
Induction randomization			
CTD	210 (37.8%)	313 (35.2%)	523 (36.2%)
CRD	224 (40.3%)	346 (39.0%)	570 (39.5%)
KCRD	122 (21.9%)	229 (25.8%)	351 (24.3%)
Induction consolidation (=intensification) randomization, including primary refractory patients			
No intensification	456 (82.0%)	758 (85.4%)	1214 (84.1%)
No consolidation chemotherapy	46 (8.3%)	59 (6.6%)	105 (7.3%)
CVD consolidation chemotherapy	50 (9.0%)	61 (6.9%)	111 (7.7%)
Did not undergo CVD randomization (primary refractory = NC or PD during induction)	4 (0.7%)	10 (1.1%)	14 (1.0%)
Maintenance randomization			
Observation	197 (35.4%)	321 (36.1%)	518 (35.9%)
Len maintenance ¹	359 (64.4%)	567 (63.9%)	926 (64.1%)

¹ Including patients randomized to lenalidomide/vorinostat

Supplementary Table 2. Clinical characteristics, maintenance randomization and response prior to maintenance randomization in relation to genetic hits.

Characteristic	N	No hit N = 285 ¹	Single hit N = 177 ¹	Double hit N = 94 ¹
Age	556	59 (53, 65)	60 (54, 64)	59 (53, 64)
Sex	556	186 (65%)	115 (65%)	59 (63%)
Maintenance randomization	556			
Len maintenance ²		171 (60%)	123 (69%)	65 (69%)
Observation		114 (40%)	54 (31%)	29 (31%)
Response pre-maintenance randomization ³	552			
CR		77 (27%)	58 (33%)	19 (21%)
VGPR		151 (53%)	100 (56%)	65 (71%)
PR		54 (19%)	19 (11%)	6 (6.5%)
MR/PD		1 (0.4%)	0 (0%)	2 (2.2%)
Unknown		2	0	2

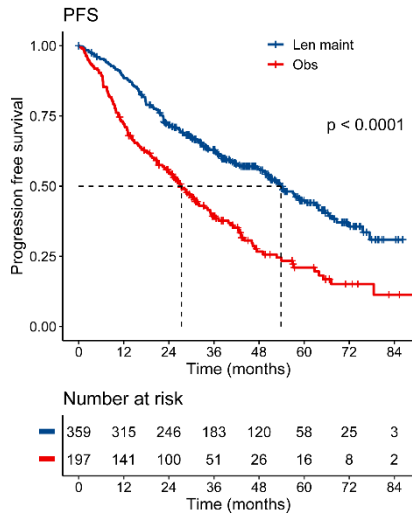
¹Statistics presented: median (IQR); n (%); ²Including patients randomized to lenalidomide/vorinostat;

³as per International Myeloma Working Group response criteria

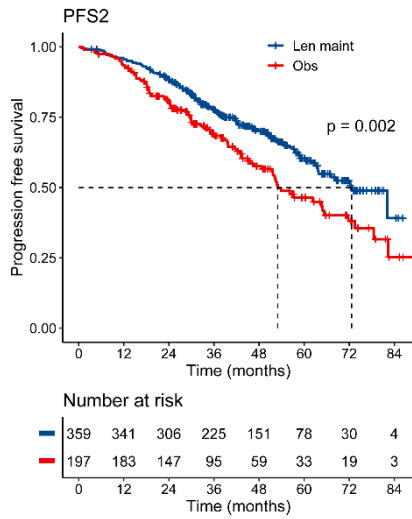
SUPPLEMENTARY FIGURES

Supplementary Figure 1: Outcome for overall group of 556 patients.

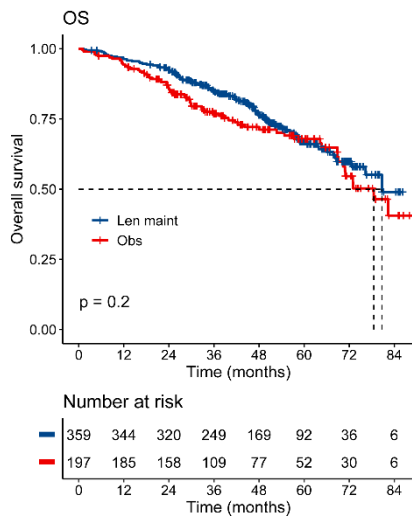
A)



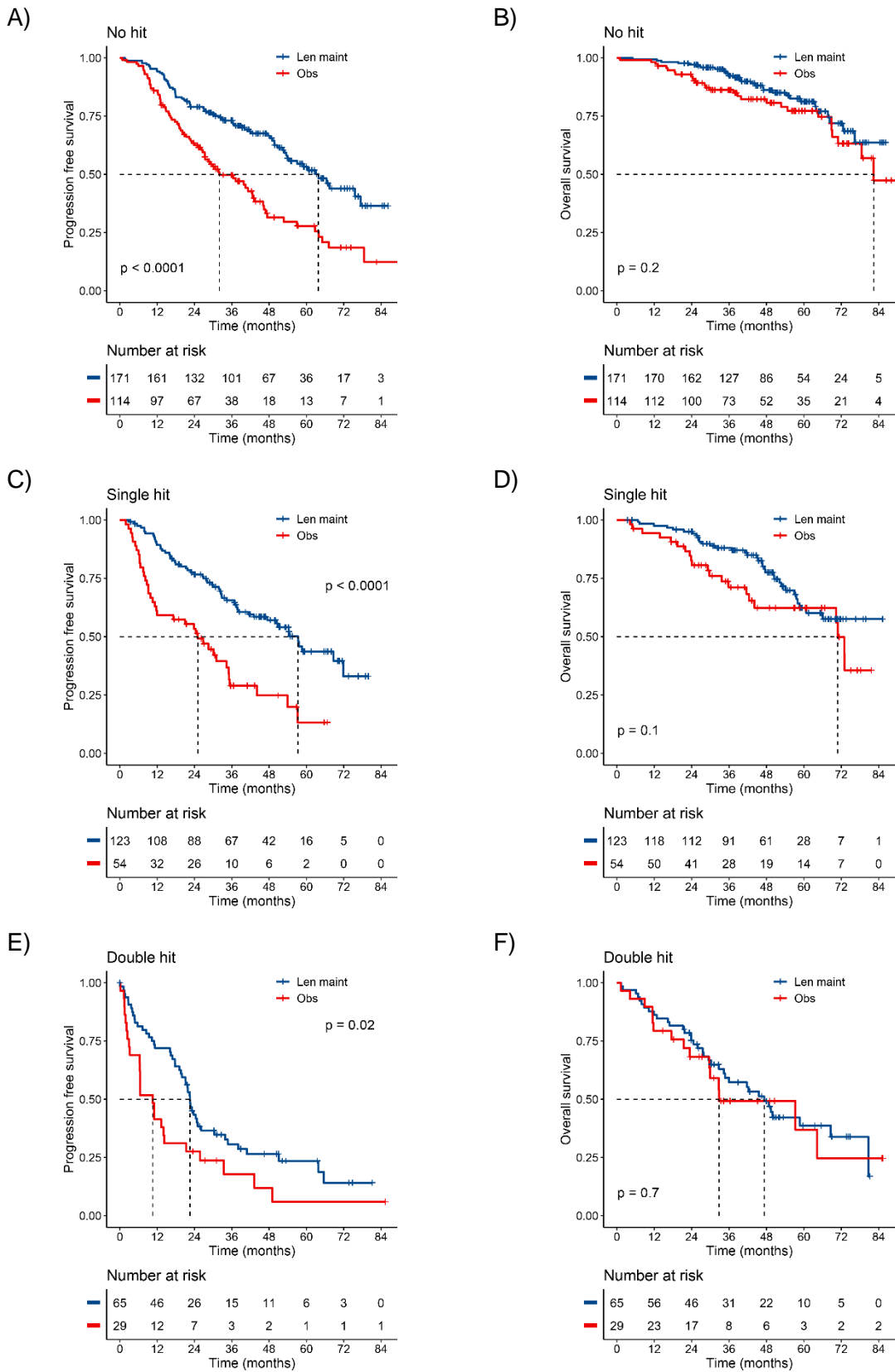
B)



C)



Supplementary Figure 2: Outcome for patients with no hit, single hit or double hit in relation to maintenance randomization. Kaplan-Meier plots for A)/C)/E) PFS and B)/D)/F) OS for patients randomized to Len maintenance (blue curves) or observation (red curves). P-values: Wald-P.



Supplementary Figure 3: Outcome for patients with different copy number levels of 1q in relation to maintenance randomization.

Kaplan-Meier plots for PFS for patients with A) three copies of 1q (gain(1q)) and B) four or more copies of 1q (amp(1q)). *P*-values: Wald-*P*.

