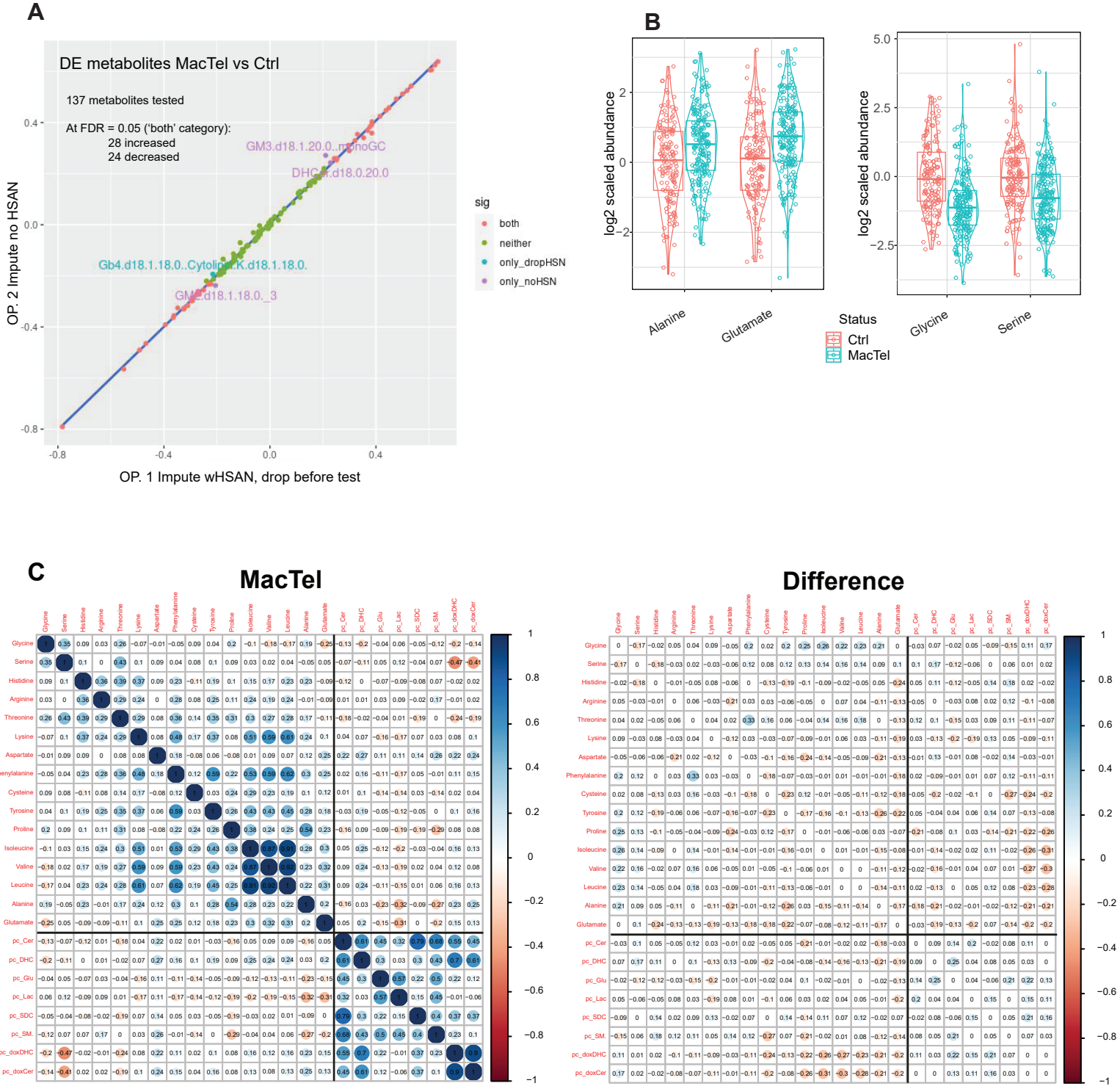


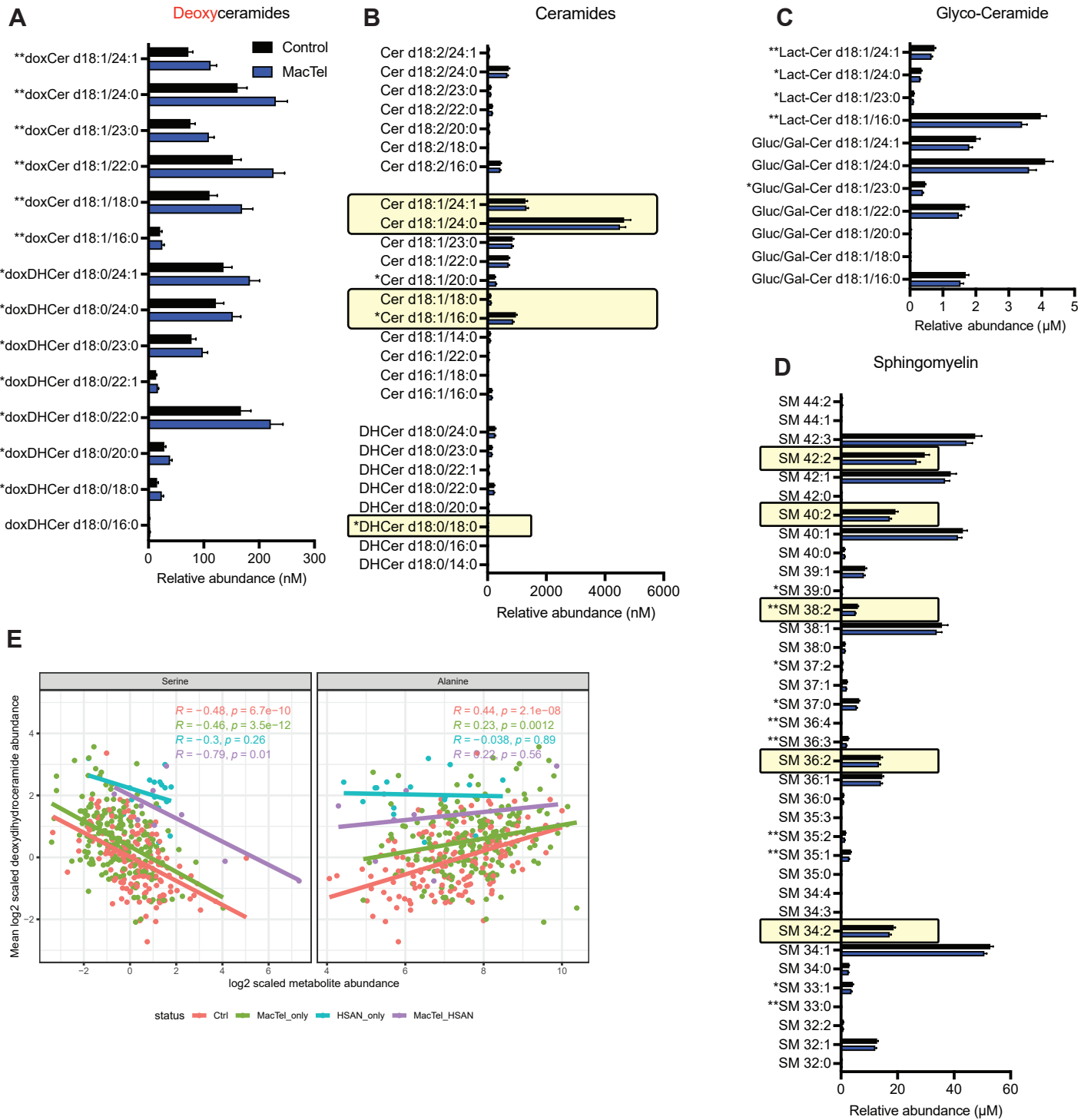
Supplementary Figure 1

Amino acid levels in MacTel patients and impact of inclusion of HSAN1 patients

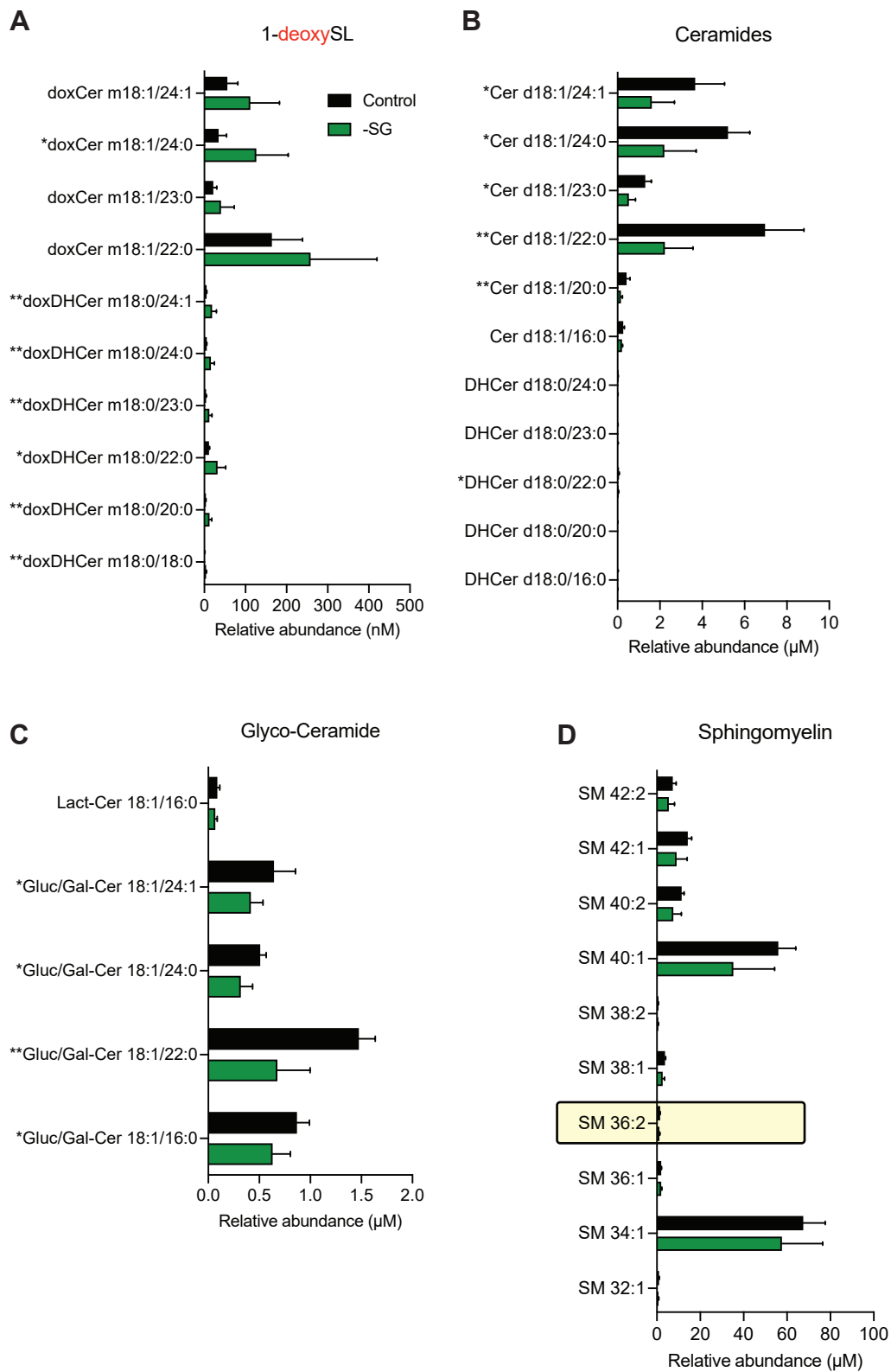


Supplementary Figure 2

MacTel patients have elevated doxSL levels and reduced SM

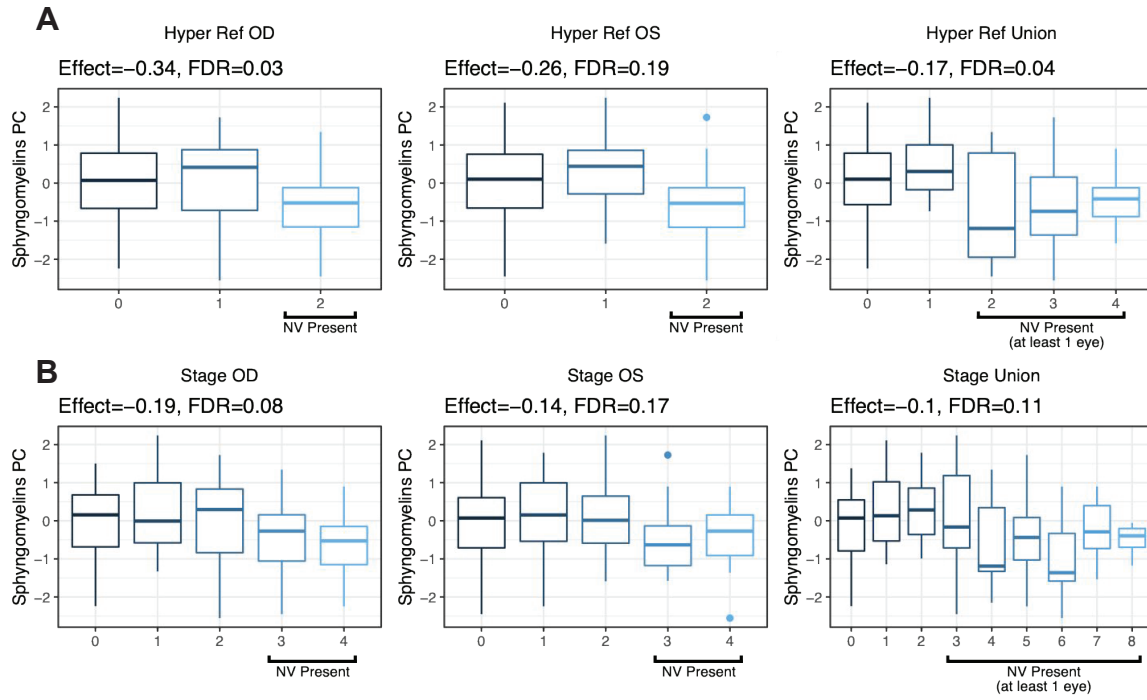


Supplementary Figure 3 Abundance of SL species in mouse plasma on a serine/glycine-free diet



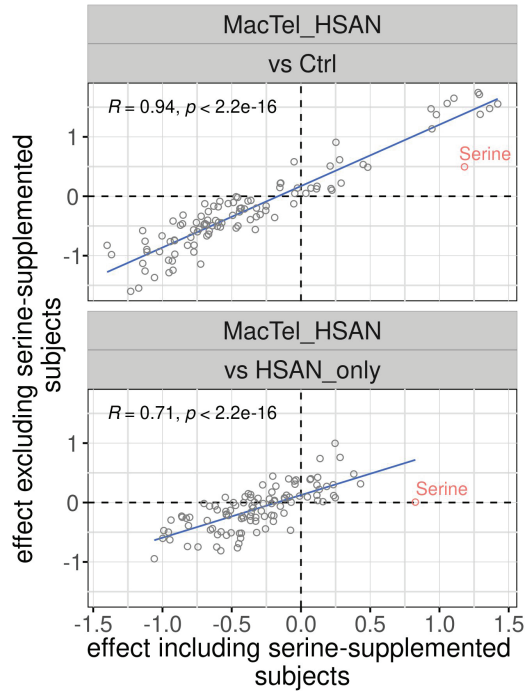
Supplementary Figure 4

Relationship between SM and hyperreflectivity



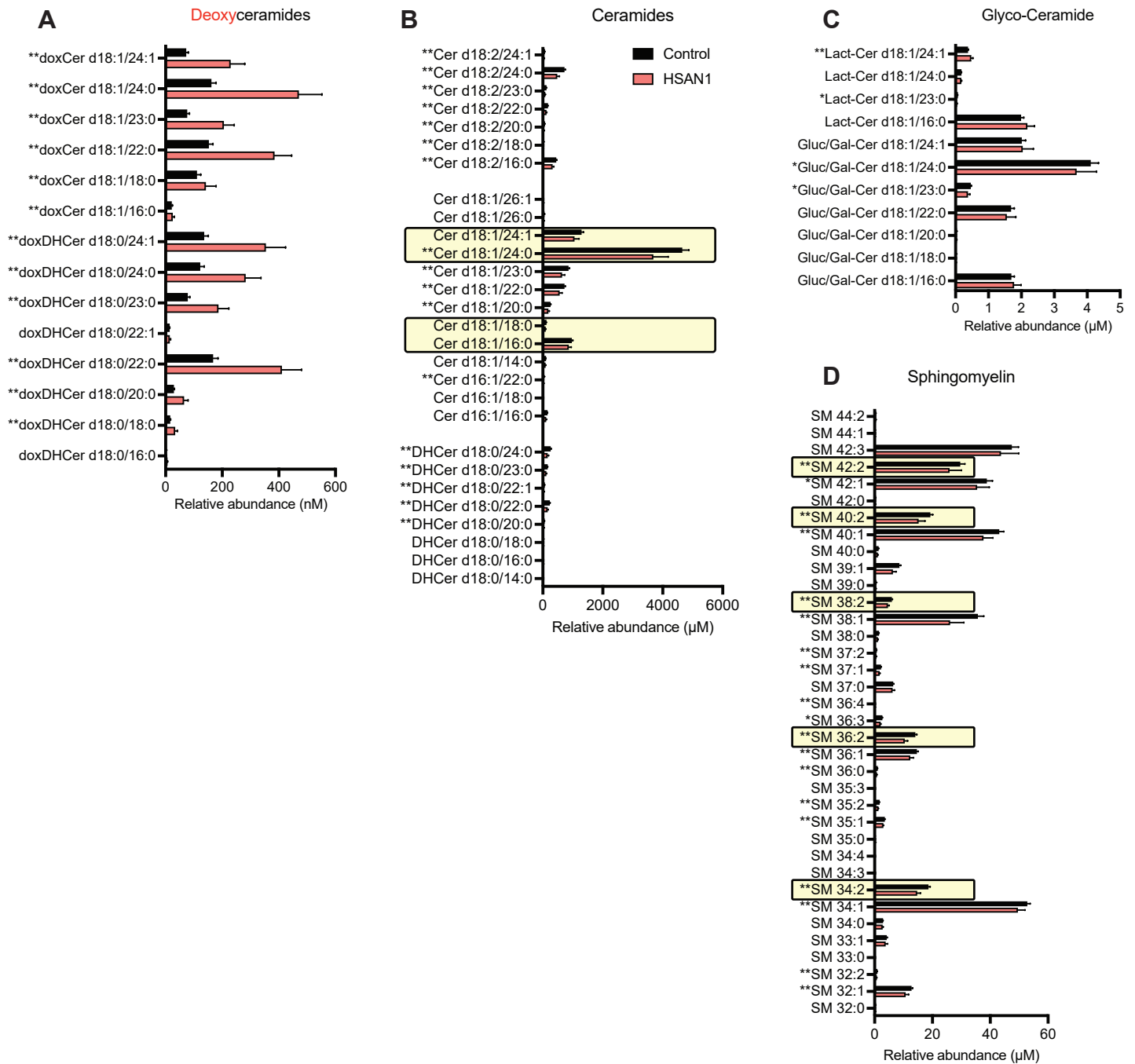
Supplementary Figure 5

Impact of excluding serine-supplemented subjects



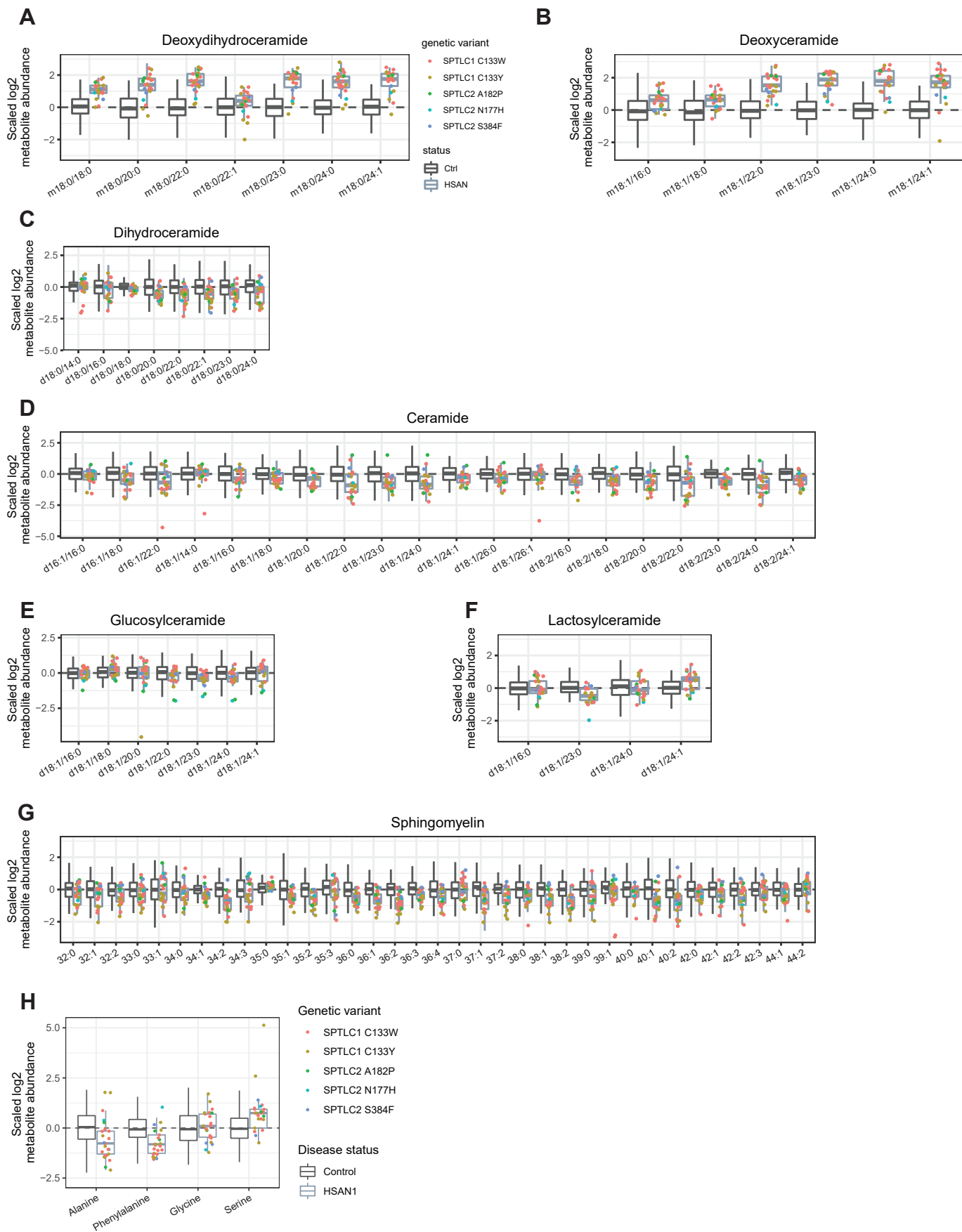
Supplementary Figure 6

HSAN1 patients have elevated doxSL and lower levels of most other SL



Supplementary Figure 7

Relative abundance of SL in HSN1 patients stratified by genetic mutation



Supplementary Figure 8

MacTel patients have distinct SL changes compared to patients with HSAN1

