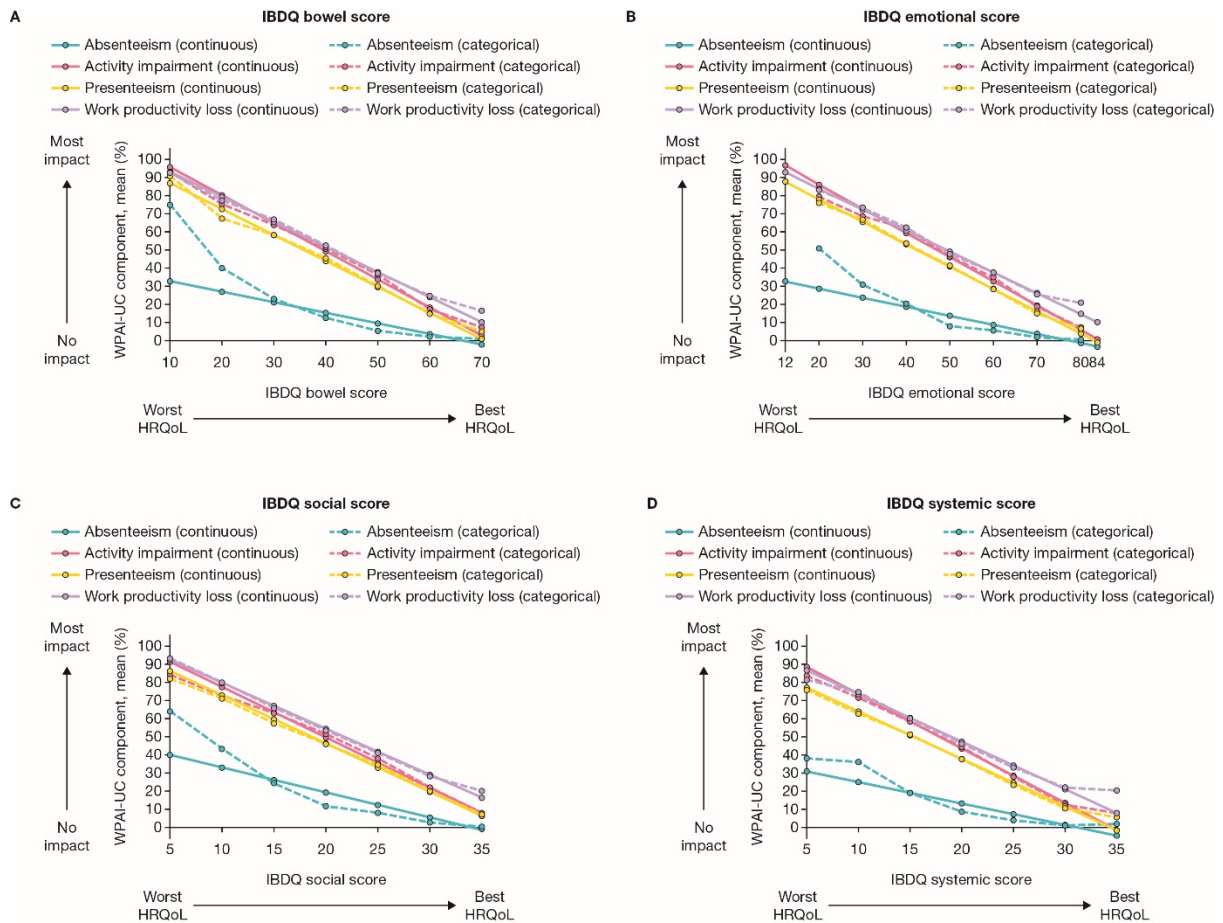


**Supplementary Figure 2.** Estimated relationship between the IBDQ domains as continuous or categorical anchors and the four WPAI-UC components.



HRQoL, health-related quality of life; IBDQ, Inflammatory Bowel Disease Questionnaire; WPAI-UC, Work Productivity and Activity Impairment-Ulcerative Colitis.

Data from OCTAVE Induction 1 and 2 and OCTAVE Sustain; all treatment groups from each Phase 3 study were pooled for analysis. WPAI-UC scores are expressed as percentages, with a higher percentage indicating greater impairment and less productivity. The IBDQ total score ranges from 32 to 224 and includes four domains: bowel (total domain score range 10–70), emotional (total domain score range 12–84), social (total domain score range 5–35), and systemic (total domain score range 5–35). For the total score (range 32–224) and each domain, a higher score indicates a better HRQoL.