

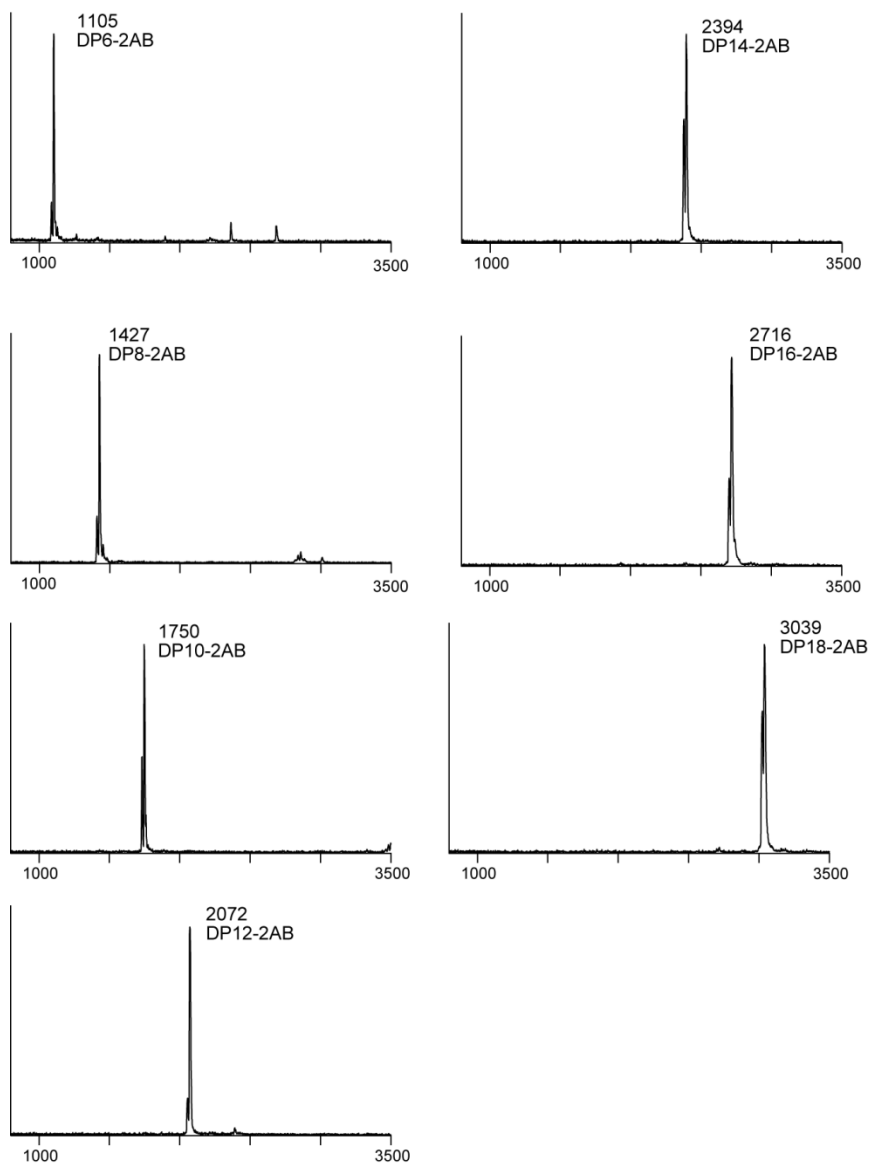
---

# Polymerization of the backbone of the pectic polysaccharide rhamnogalacturonan I

---

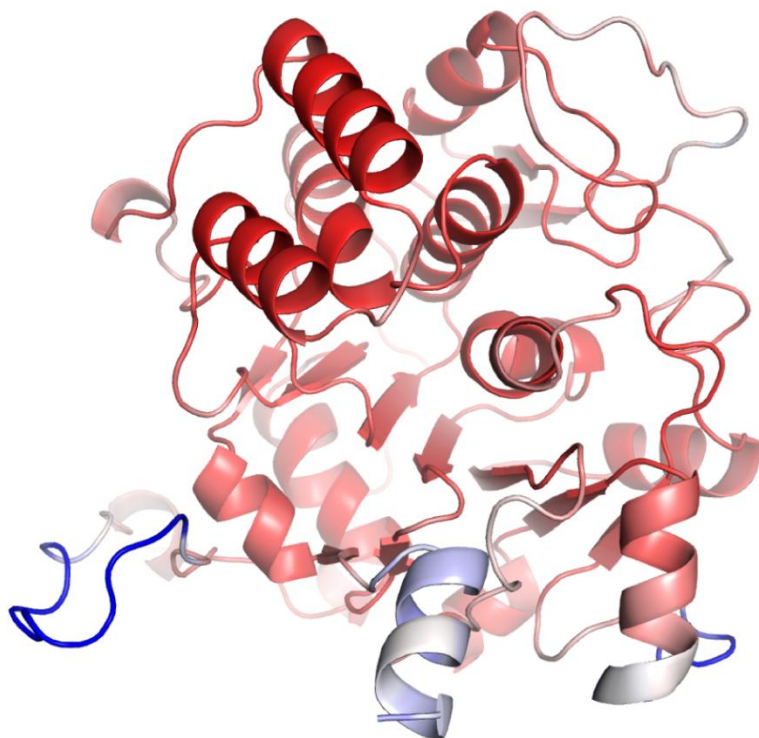
In the format provided by the authors and unedited

---



**Supplementary Figure 1. MALDI-TOF MS of RG-I acceptors purified by anion exchange chromatography.**

The purity of RG-I oligosaccharide fractions collected as in Supplemental Fig. 2B was assessed by MALDI-TOF mass spectrometry. DP, degree of polymerization.



**Supplementary Figure 2.** Top ranked RGGAT1 model generated from AlphaFold2, colored by confidence intervals ranging from 60-100 (blue to red).

Construct	Primer sequence
MUC170Δ77F	<u>AACTTGTACTTTCAAGGCGTCGGAAAAGGTGAAGATAGTC</u>
MUC170Δ77R	<u>ACAAGAAAGCTGGGTCTTAAGCTGAATCTGGT</u>
RRT1Δ61F	<u>AACTTGTACTTTCAAGGCTTGGGAGAGATGTGGGGA</u>
RRT1Δ61R	<u>ACAAGAAAGCTGGGTCTAAATGACTCTCAATGGTTCA</u>
RRT2Δ62F	<u>AACTTGTACTTTCAAGGCGGAGAGATGTGGGGACCT</u>
RRT2Δ62R	<u>ACAAGAAAGCTGGGTCTAGGTTTCTTCTAGTGAATT</u>
RRT3Δ54F	<u>AACTTGTACTTTCAAGGCTCCCAAATCTTCACTGGT</u>
RRT3Δ54R	<u>ACAAGAAAGCTGGGTCTAACTGATACATTCTTGAGG</u>
RRT4Δ51F	<u>AACTTGTACTTTCAAGGCGGTGAGCTTTGGCATTCC</u>
RRT4Δ51R	<u>ACAAGAAAGCTGGGTCTAATGTGTTAAATTTCTATG</u>
Universal PrimerF	<u>GGGGACAAGTTTGTACAAAAAAGCAGGCTCTGAAA</u> <u>ACTTGTACTTTCAAGGC</u>
Universal PrimerR	<u>GGGGACCACTTTGTACAAGAAAGCTGGGTC</u>

**Supplementary Table 1. All primers used for cloning.**

All primer sequences used are listed with universal sequences underlined.