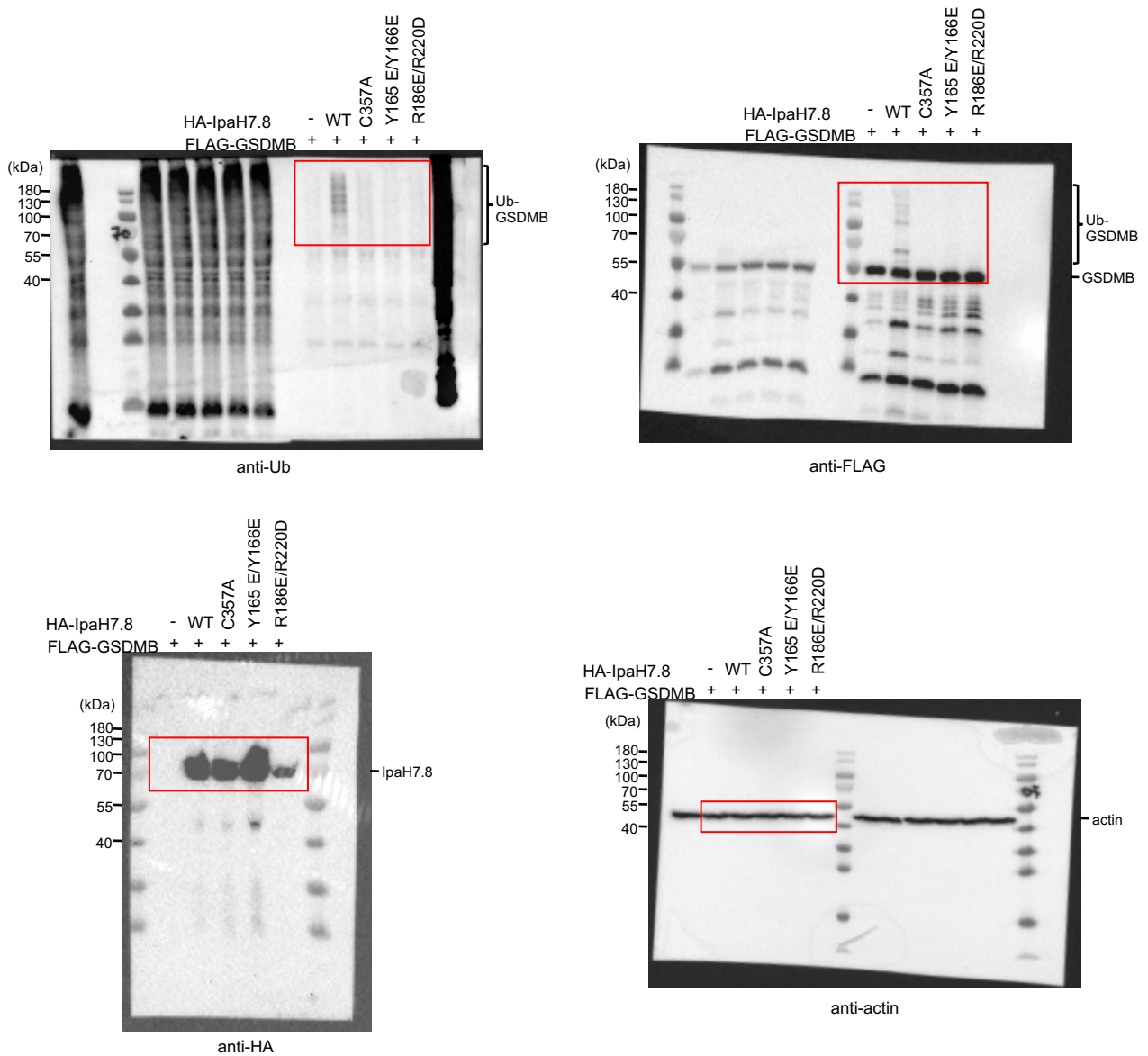


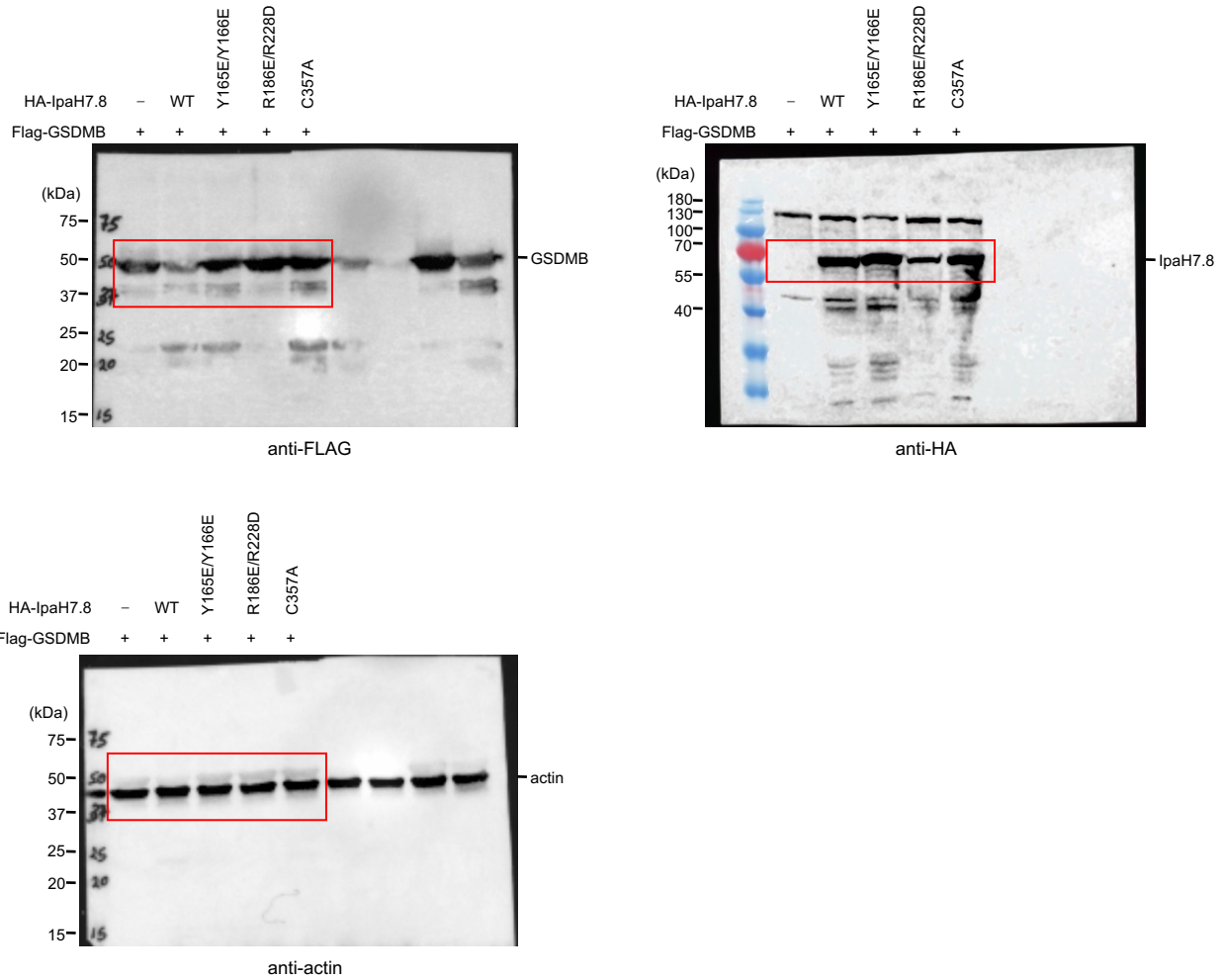
Supplementary information

Structural basis for GSDMB pore formation and its targeting by IpaH7.8

In the format provided by the authors and unedited



SI Figure 1 | Uncropped immunoblots from Figure 2f. Immunoblots for Fig. 2f showing the ubiquitination of GSDMB in HEK293T cells co-transfected with FLAG-tagged GSDMB and HA-IpaH7.8 (WT or indicated mutants). Proteins were detected by western blotting, using the indicated antibodies and the red rectangles show the cropping location.



SI Figure 2 | Uncropped immunoblots from Extended Data Fig. 3c. Immunoblots for Extended Data Fig. 3c showing the protein level of FLAG-tagged GSDMB in 293T cells when co-transfected with HA-IpaH7.8 (WT or indicated mutants). Proteins were detected by western blotting, using the indicated antibodies and the red rectangles show the cropping location.