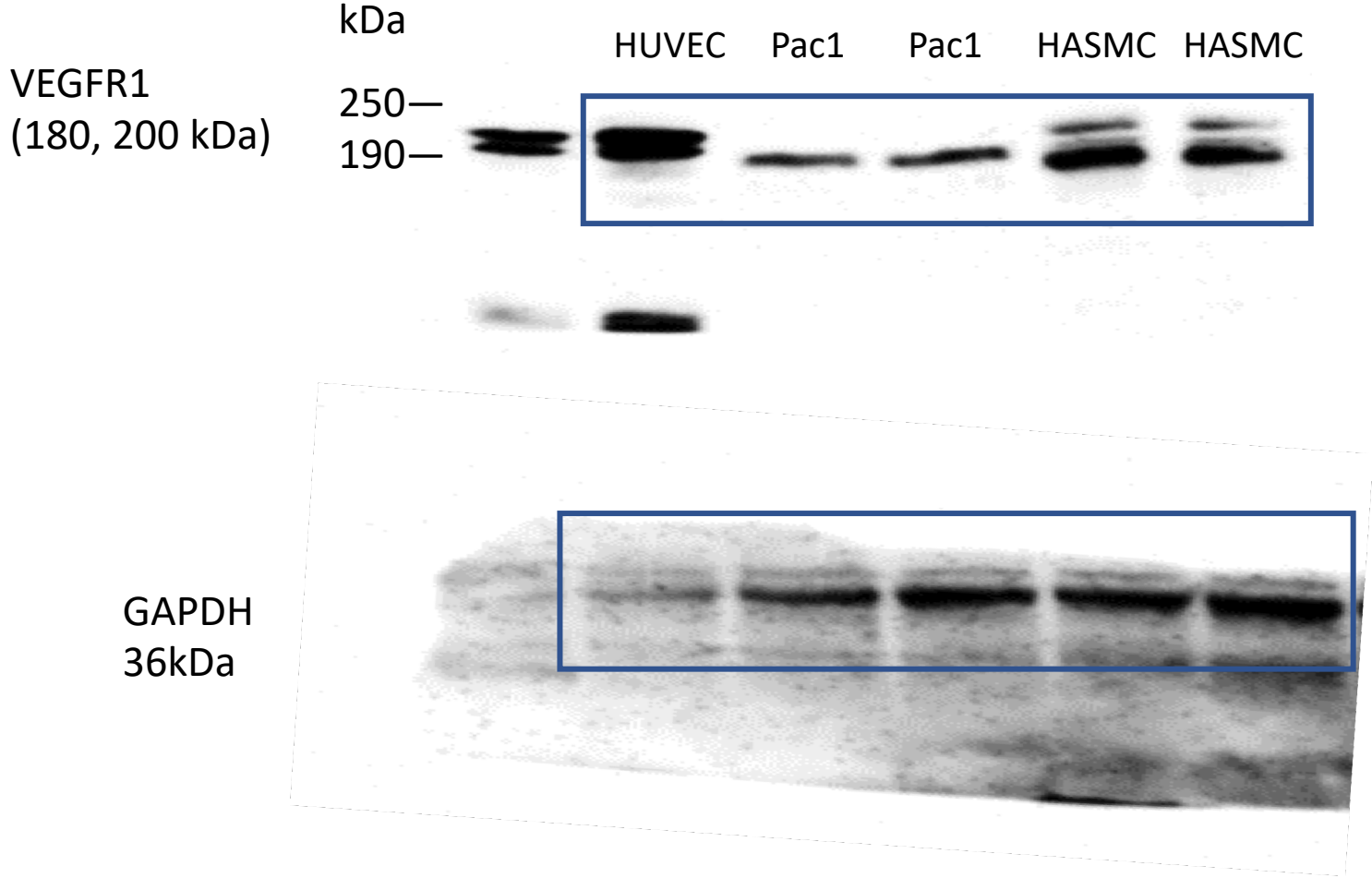


VEGFR1 expression



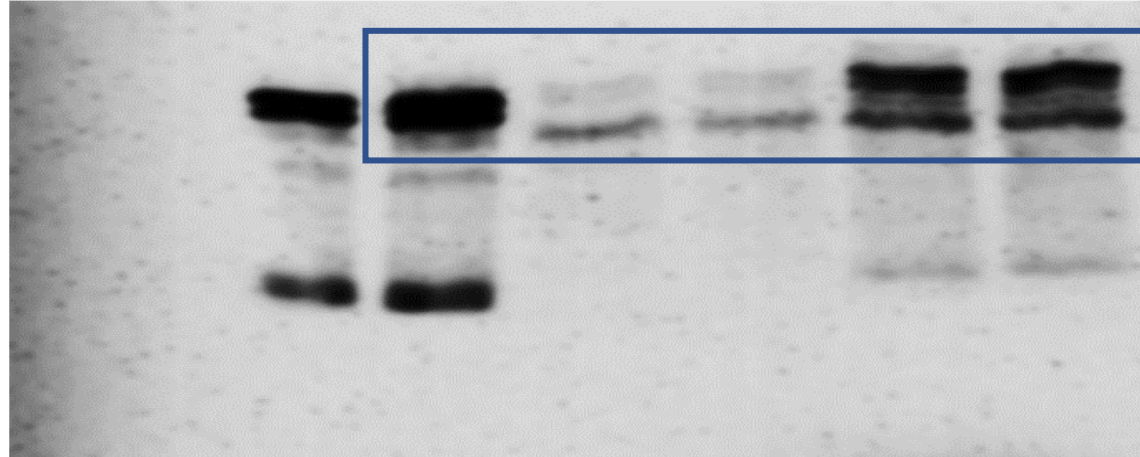
Blot was cut in half and top part was incubated with VEGFR1 and the bottom was incubated with GAPDH

VEGFR2 expression

VEGFR2
(210, 230 KD)

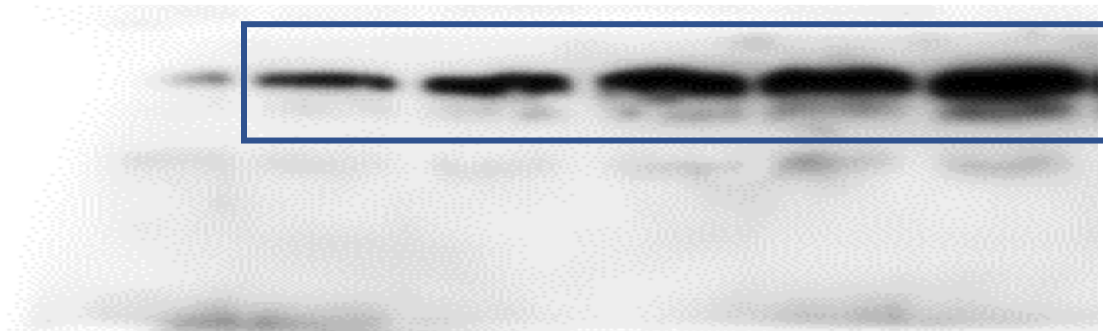
250—
190—

HUVEC Pac1 Pac1 HASMC HASMC



GAPDH
(36kDa)

46—
32—



Blot was cut in half and top part was incubated with VEGFR2 and the bottom was incubated with GAPDH