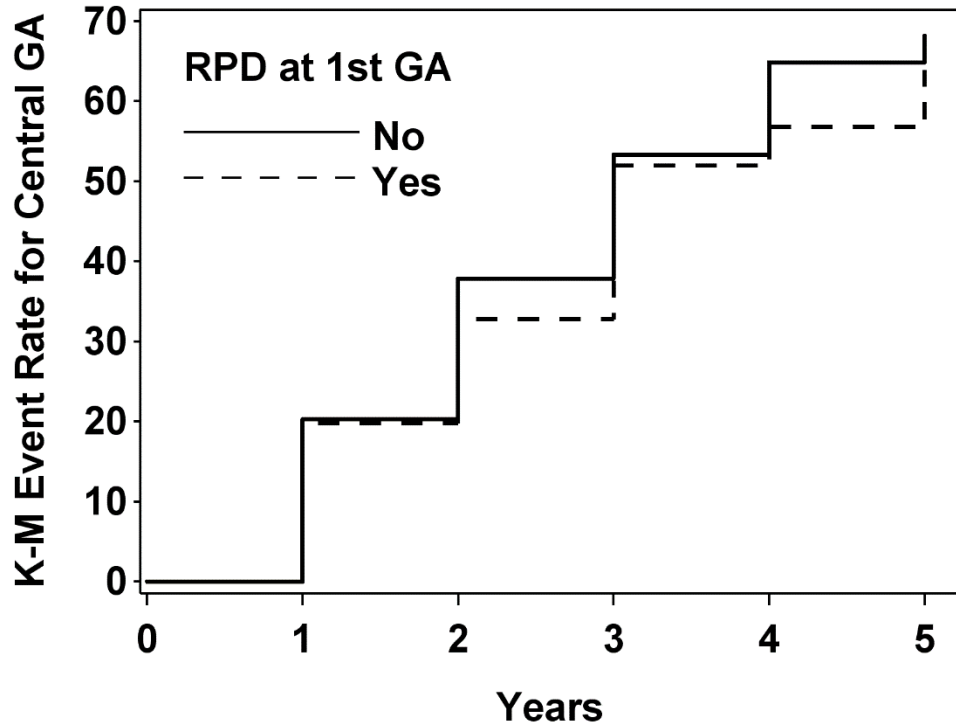


Supplementary Figure 1. Kaplan-Meier curve of progression to central involvement for eyes with incident non-central geographic atrophy, according to reticular pseudodrusen status.



| | 0 | 1 | 2 | 3 | 4 | 5 |
|------------|-----|------|------|------|------|------|
| No | 0.0 | 20.3 | 37.9 | 53.3 | 64.9 | 68.2 |
| Yes | 0.0 | 19.8 | 32.8 | 52.0 | 56.8 | 67.6 |

Abbreviations: GA = geographic atrophy; RPD = reticular pseudodrusen