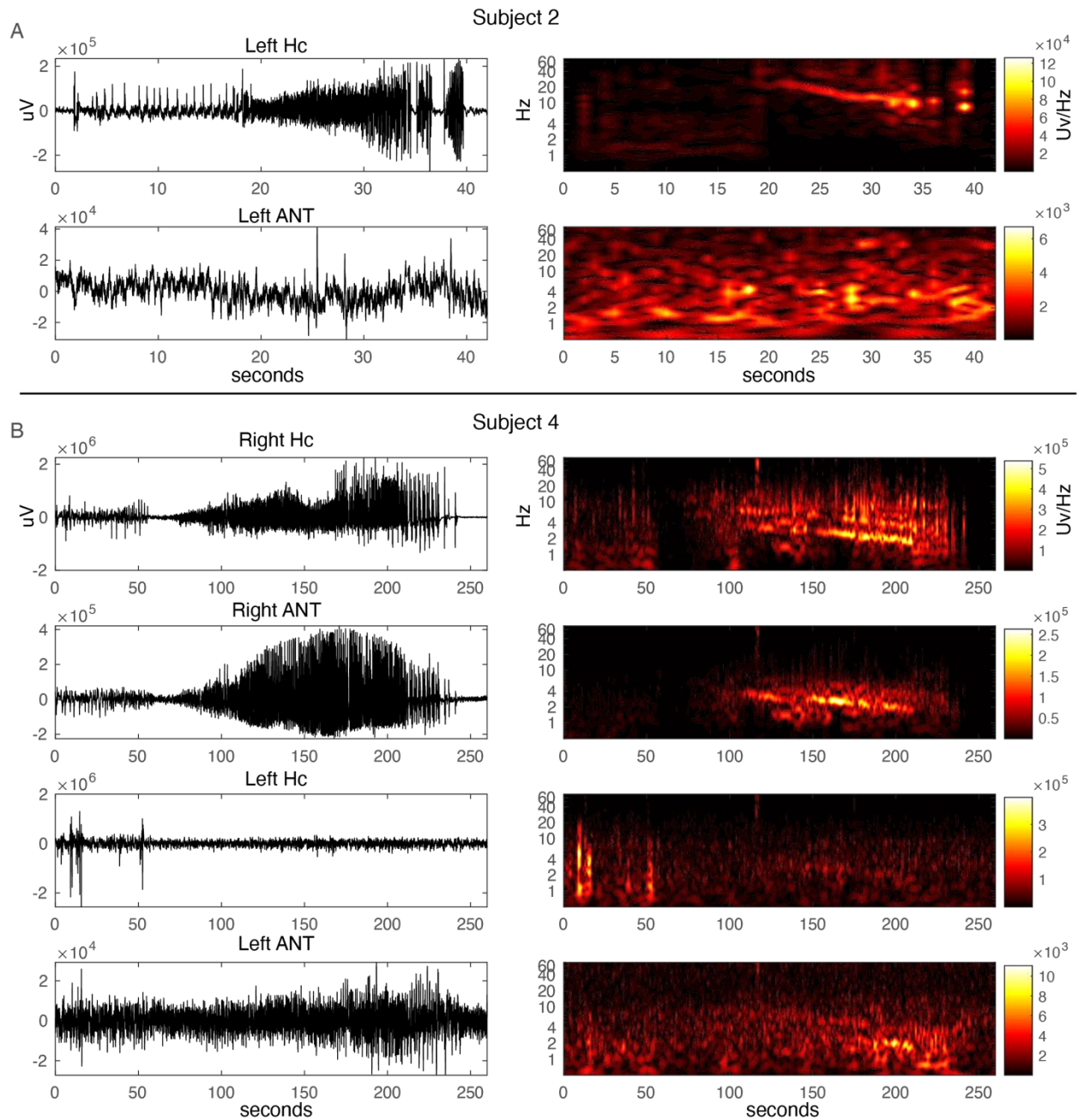
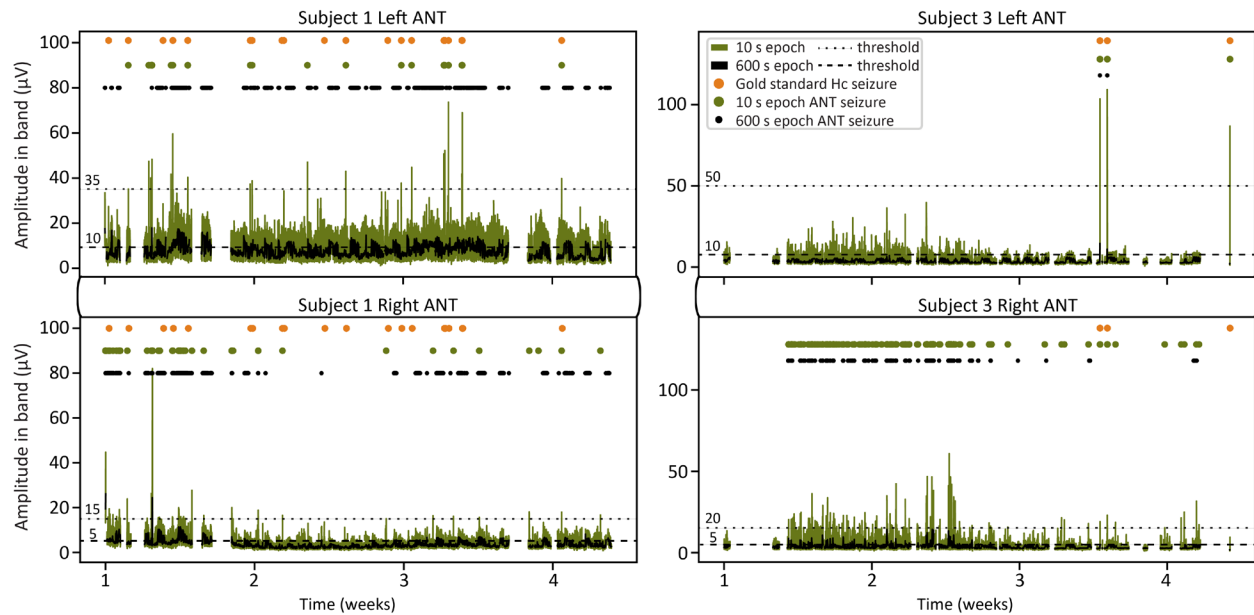


Supplementary Figure 1. Left hippocampal lead positioned in the remnant left hippocampal tail of subject 2, in axial (left panel) and sagittal (right panel) planes. The white arrow points to the remnant hippocampal tail.



Supplementary Figure 2. A) Representative left Hc seizure tracing and spectrogram for subject 2, demonstrating no apparent propagation to the left ANT. B) Representative right Hc onset seizure for subject 4, demonstrating propagation to the ipsilateral more so than contralateral ANT. Hc: hippocampus. ANT: anterior nucleus of the thalamus.



Supplementary Figure 3. RC+STM derived ANT PIB trend data using optimized seizure detection parameters (7 Hz center frequency, 5 Hz bandwidth, 10 second epoch), and optimized parameters with 10 minute epoch duration, for subjects 1 and 3. Both subjects had exclusively left Hc onset seizures. Visually confirmed Hc seizure detections, and ANT PIB trend-based seizure detections are marked. Detection thresholds are marked by dashed lines. Top plots show ANT PIB trend data ipsilateral to seizure onset, and bottom plots shows concurrent contralateral ANT PIB trend data, demonstrating greater ictal to interictal contrast in the ipsilateral thalamus. ANT: anterior nucleus of the thalamus. Hc: hippocampus. PIB: power-in-band.