

This Supplemental Information file includes:

SUPPLEMENTAL DATA:

SUPPLEMENTAL FIGURE S1 -S4

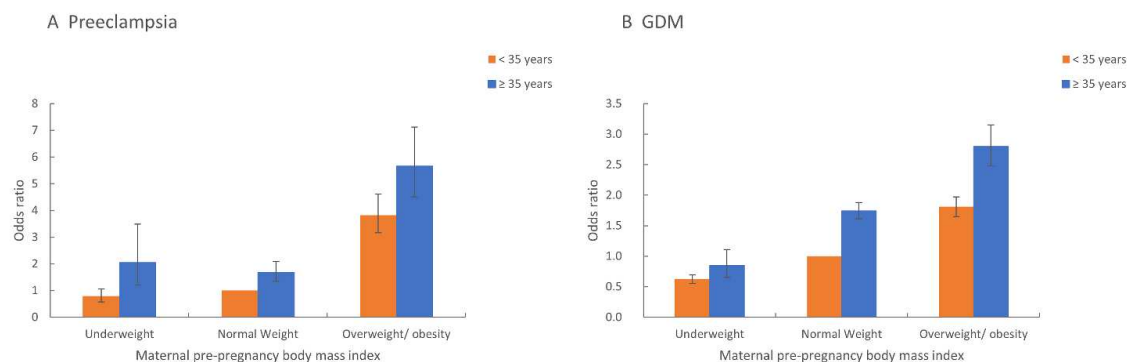


Figure S1 Association of maternal age and pre-pregnancy BMI with the risk of preeclampsia (A). Associations of maternal age and pre-pregnancy BMI with the risk of GDM (B).

Notes: Abbreviations: GDM: gestational diabetes mellitus; BMI: body mass index. Adjusted for maternal demographic characteristics including residence location, education, nationality, monthly household income, drinking in early pregnancy, passive smoking in early pregnancy, smoking in early pregnancy, parity, folic acid supplementation, family history of hypertension, and family history of hyperglycemia.

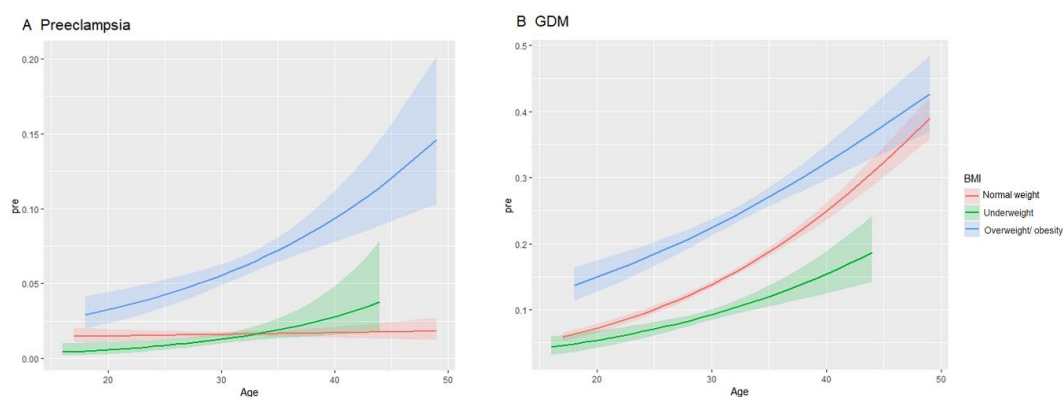


Figure S2 The interaction visualized between maternal age and pre-pregnancy BMI with the risk of developing preeclampsia (A). The interaction visualized between maternal age and pre-pregnancy BMI with the risk of developing GDM (B).

Notes: Abbreviations: GDM: gestational diabetes mellitus; BMI: body mass index. Adjusted for maternal demographic characteristics including residence location, education, nationality, monthly household income, drinking in early pregnancy, passive smoking in early pregnancy, smoking in early pregnancy, parity, folic acid supplementation, family history of hypertension, and family history of hyperglycemia.

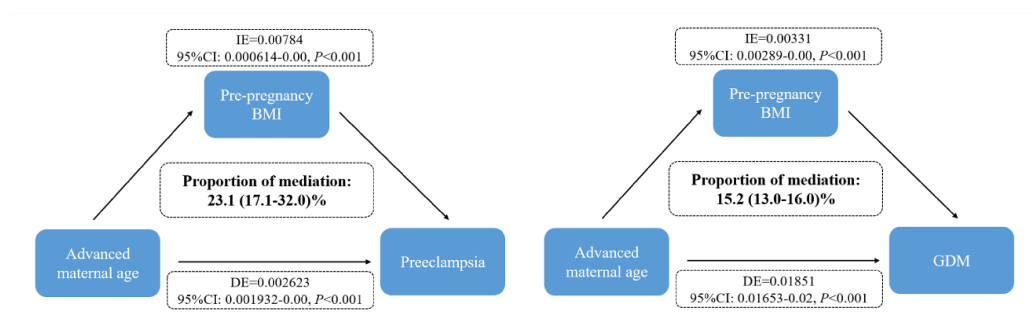


Figure S3 Mediation effect estimates of pre-pregnancy BMI on the associations between maternal age and preeclampsia/GDM

Notes: Abbreviations: DE: Direct effect (Average Direct Effects); IE: Indirect effect (Average Causal Mediation Effects); CI: confidence interval; GDM: gestational diabetes mellitus; BMI: body mass index.

Adjusted for maternal demographic characteristics including residence location, education, nationality, monthly household income, drinking in early pregnancy, passive smoking in early pregnancy, smoking in early pregnancy, parity, folic acid supplementation, family history of hypertension, and family history of hyperglycemia.

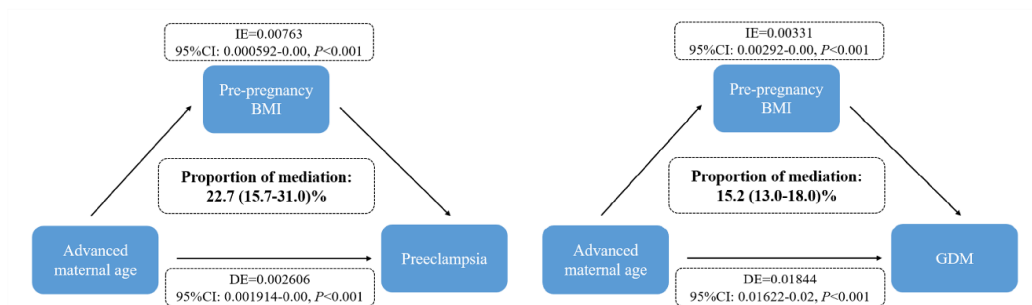


Figure S4 Sensitivity analysis of mediating effects.

Notes: Abbreviations: DE: Direct effect (Average Direct Effects); IE: Indirect effect (Average Causal Mediation Effects); CI: confidence interval; GDM: gestational diabetes mellitus; BMI: body mass index.

Adjusted for maternal demographic characteristics including residence location, education, nationality, monthly household income, drinking in early pregnancy, passive smoking in early pregnancy, smoking in early pregnancy, parity, folic acid supplementation, family history of hypertension, and family history of hyperglycemia.