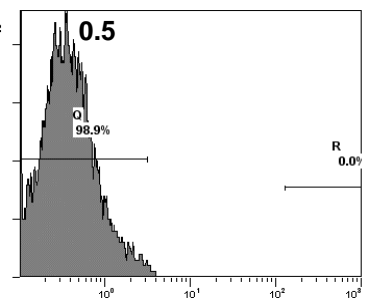
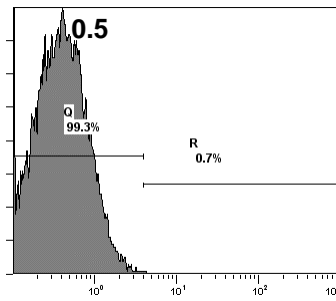
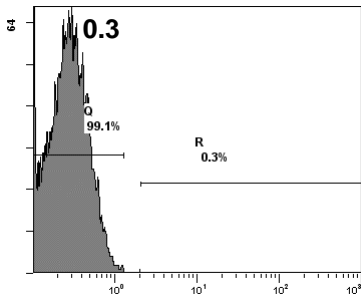
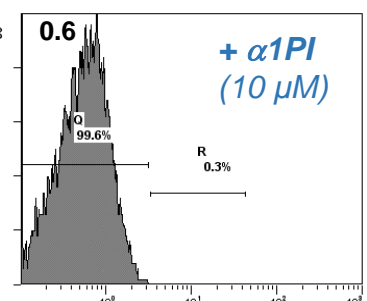
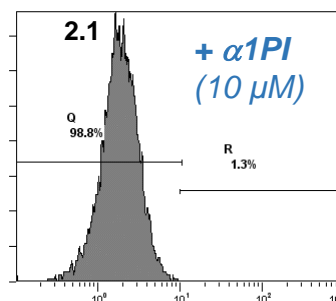
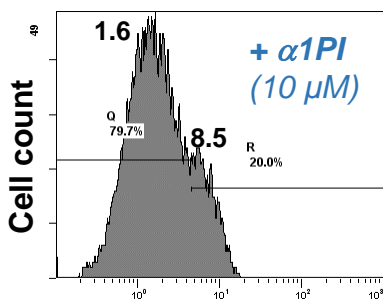
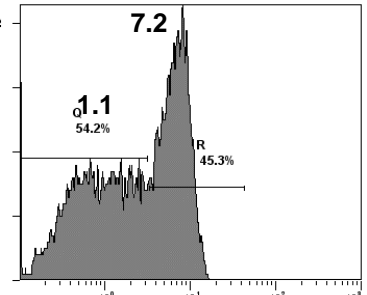
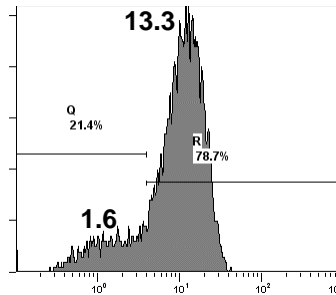
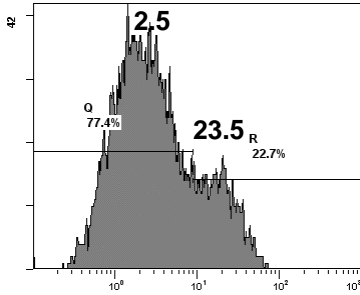


A**HEALTHY DONOR 1****HEALTHY DONOR 2****HEALTHY DONOR 3****PMA-activated cells**

ISOTYPE CONTROL

**ANTI-PR3 (WGM2)**

Fluorescence

PR3^{mb} amount: 36.2%

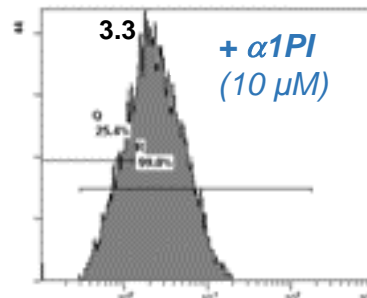
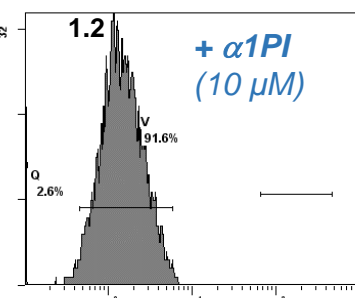
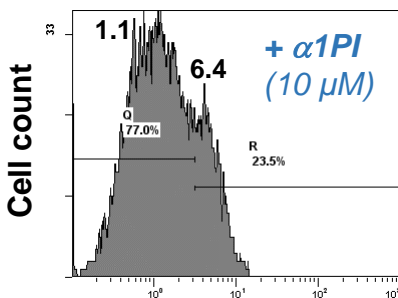
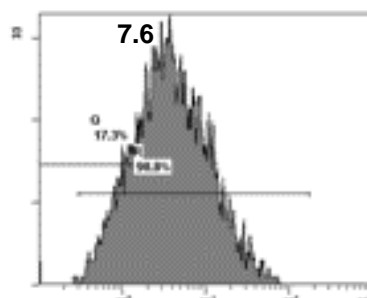
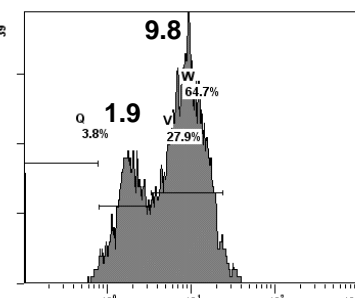
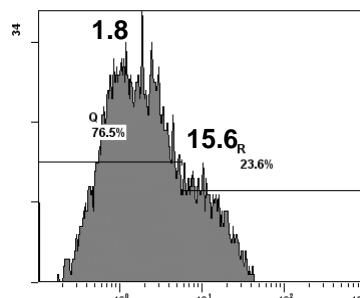
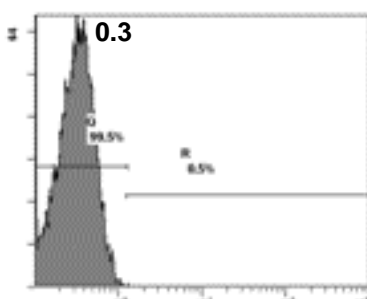
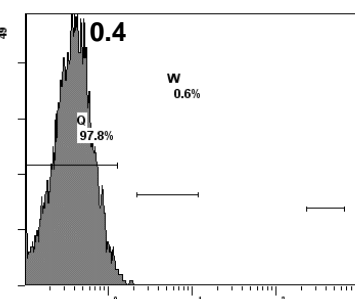
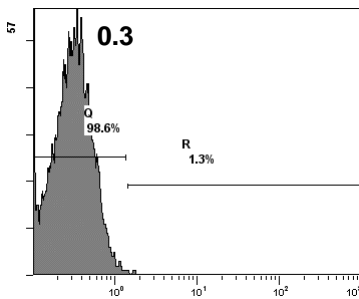
Fluorescence

PR3^{mb} amount: 15.6%

Fluorescence

PR3^{mb} amount: 8.3%**B****HEALTHY DONOR 4****HEALTHY DONOR 5****HEALTHY DONOR 6****A23187-activated cells**

ISOTYPE CONTROL



Fluorescence

PR3^{mb} amount: 41.2%

Fluorescence

PR3^{mb} amount: 12.2%

Fluorescence

PR3^{mb} amount: 43.4%