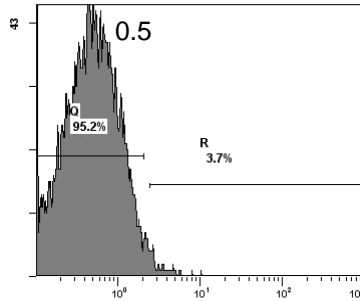
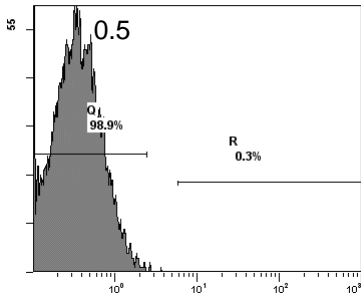
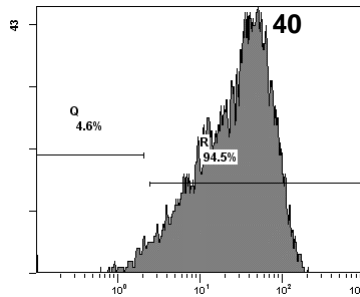
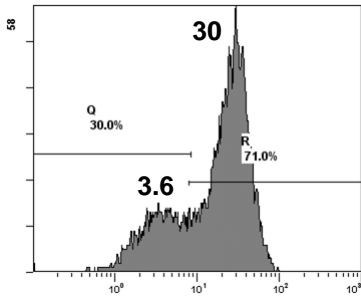
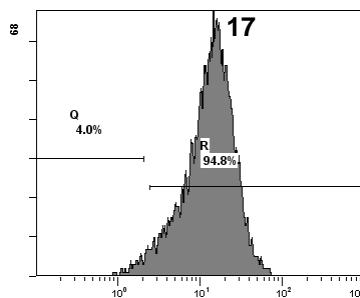
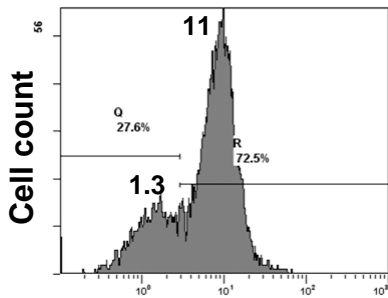
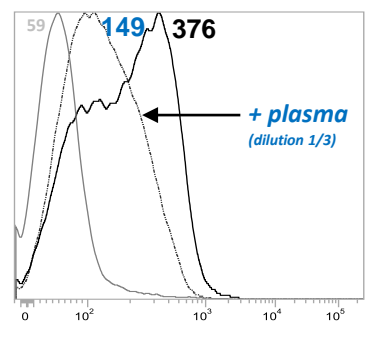
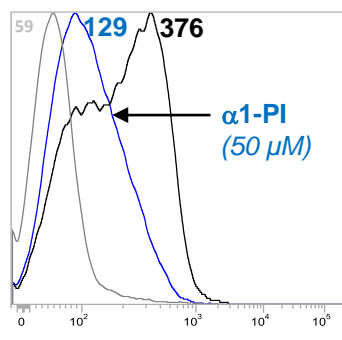
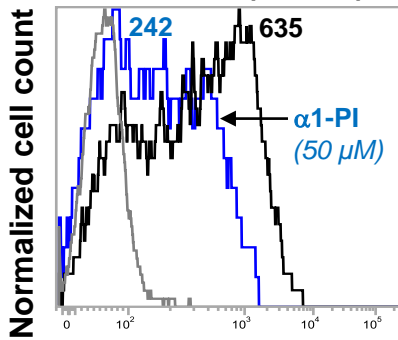


**A****HEALTHY DONOR 7****HEALTHY DONOR 8**

ISOTYPE CONTROL

ISOTYPE CONTROL

**Activated neutrophils****ANTI-PR3 (WGM2)****ANTI-PR3 (WGM2)****Activated neutrophils****+  $\alpha$ 1PI  
(10  $\mu$ M)****Fluorescence****Fluorescence****PR3<sup>mb</sup> amount: 36.7%****PR3<sup>mb</sup> amount: 42.5%****B****HEALTHY DONOR 9****HEALTHY DONOR 10****Activated neutrophils****Activated neutrophils****ANTI-PR3 (WGM2)****ANTI-PR3 (WGM2)****Fluorescence****Fluorescence****Fluorescence****PR3<sup>mb</sup> amount: 38.1%****PR3<sup>mb</sup> amount: 34.3%****PR3<sup>mb</sup> amount: 39.6%**